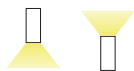




## Exterior 1" Wall Mount Cylinder, Direct or Indirect



### Features

The FINCH family of cylinders with a 1" aperture, features exceptional output, flexibility, and a broad range of configurations to provide discreet quality illumination while integrating into the architecture. It is available in a fixed downlight, adjustable (with 50° tilt), wall mount and even exterior ground mount options. Whether installed on ceilings, walls/mullions or the ground, the FINCH family blends seamlessly into its surroundings.

The Exterior wall mount fixture offers up to 800 lumens with an option for either Integral or Remote driver. Fully sealed against the elements, this elegant cylinder offers a wide range of optics to provide the desired effects. Not only are the optics field replaceable, but optional accessories like hexcell louver or optical films can be installed or changed out as well.

### Product Overview

Type:	Wall Mount, Direct or Indirect
Wattage:	6W, 8W
Color Temp:	2400K, 2700K, 3000K, 3500K, 4000K
CRI:	80+ & 90+ typ.
Dimming:	0-10V, DALI, TRIAC/ELV

### PROJECT:

### TYPE:

### Performance Data

Watts	Lumens	LPW	CCT	CRI
6	643	102.1	3000K	80+
8	787	93.7	3000K	80+

Data is based on flood optics, 120V, 3000K, 80+ IES files available on website

### Electrical Data (for Remote Driver option)

	6W		8W		10W	
	Watts	Amps	Watts	Amps	Watts	Amps
120V	6.3	0.054	8.4	0.071	10.5	0.088
277V	6.7	0.034	8.6	0.038	10.7	0.044

Electronic constant current LED driver



**PROJECT:**
**TYPE:**

To Order, please specify both the light fixture and remote driver.

Fixture Example: FIN6X-WD.8.309.WF.BT.RC.SOL

Remote Driver Example: FINPW.8.0-10V.MP

**Exterior 1" Wall Mount Direct or Indirect (with Remote Driver) Ordering Information**

1	2	3	4	5	6	7
1 Model	2 Wattage	3 Color Temp and CRI	4 Beam Spreads	5 Body Finish	6 Mounting	7 Accessories
<b>FIN6X-WD</b> 6" wall mount, direct <b>FIN6X-WI</b> 6" wall mount, indirect	<b>6</b> 6W (643 lm) <b>8</b> 8W (787 lm)	<b>30</b> 3000K, 80+ <b>35</b> 3500K, 80+ <b>40</b> 4000K, 80+ <b>249</b> 2400K, 90+ <b>279</b> 2700K, 90+ <b>309</b> 3000K, 90+ <b>359</b> 3500K, 90+ <b>409</b> 4000K, 90+	<b>SP</b> spot 15° <b>FL</b> flood 28° <b>WF</b> wide flood 35° <b>VWF</b> very wide flood 50°	<b>TBK</b> textured black <b>SLV</b> matte silver <b>BLK</b> matte black <b>BRZ</b> bronze <b>DBZ</b> dark bronze  <i>For custom RAL finish, consult factory</i>	<b>MUL</b> mullion mount (Ø2") <b>C</b> canopy (Ø5") <b>RC</b> reduced canopy (Ø3-1/2")	<b>SOL</b> solite lens <b>HEX</b> hexcell louver <b>LS</b> linear spread lens

**Remote Driver Ordering Information**

Remote driver enclosures can be provided by others or can be specified below to your project requirements. Amerlux offers a mounting plate for each remote driver with accessories for mounting in enclosure by others, or a single remote box for one driver, or a single remote box that can fit two drivers. Electrical Contractor (EC) is responsible for adherence to all local codes.

1	2	3	4
1 Model	2 Wattage	3 Drivers/Controls	4 Driver Enclosure
<b>FINPW</b>	<b>6</b> 6W (643 lm) <b>8</b> 8W (787 lm)	<b>O-10V</b> 0-10V dimming, 1%, 120/277VAC <b>DALI</b> DALI dimming, 1%, 120/277VAC <b>LE/TE</b> TRIAC/ELV dimming, 5%, 120/277VAC	<b>MP</b> mounting plate <b>RBX</b> remote box (1 driver) <b>RBX2</b> remote box (2 drivers)  <i>Notes:</i> 1. One wattage & dimming protocol per box. 2. Remote Box is NOT for wet locations. The box must be placed in a dry/damp location. If a wet location box is required, the MP option can be installed in a NEMA box supplied by others.

For enclosure drawings & wiring schematics, see pages 7-10. For Fixture with Integral Driver ordering, see page 3.

**PROJECT:**
**TYPE:**

To Order, please specify both the light fixture and transformer.

Fixture Example: FIN6X-WD-48V.8.309.WF.BT.RC.0-10V.SOL

Transformer Example: TR-48V100W

**Exterior 1" Wall Mount Direct or Indirect (with 48V Constant Voltage Integral Driver) Ordering Information**

1	2	3	4	5	6	7	8
1 Model	2 Wattage	3 Color Temp and CRI	4 Beam Spreads	5 Body Finish	6 Mounting	7 Drivers/Controls	8 Accessories
<b>FIN6X-WD-48V</b> 6" wall mount, direct <b>FIN6X-WI-48V</b> 6" wall mount, indirect	<b>6</b> 6W (643 lm) <b>8</b> 8W (787 lm) <b>10</b> 10W (927 lm)	<b>30</b> 3000K, 80+ <b>35</b> 3500K, 80+ <b>40</b> 4000K, 80+ <b>249</b> 2400K, 90+ <b>279</b> 2700K, 90+ <b>309</b> 3000K, 90+ <b>359</b> 3500K, 90+ <b>409</b> 4000K, 90+	<b>SP</b> spot 15° <b>FL</b> flood 28° <b>WF</b> wide flood 35° <b>VWF</b> very wide flood 50°	<b>TBK</b> textured black <b>SLV</b> matte silver <b>BLK</b> matte black <b>BRZ</b> bronze <b>DBZ</b> dark bronze  <i>For custom RAL finish,          consult factory</i>	<b>MUL</b> mullion mount (Ø2") <b>C</b> canopy (Ø5") <b>RC</b> reduced canopy (Ø3-1/2") <b>CDC</b> conduit canopy (Ø4-1/8")	<b>0-10V</b> 0-10V dimming, 1% <b>DALI</b> DALI dimming, 1%	<b>SOL</b> solite lens <b>HEX</b> hexcell louver <b>LS</b> linear spread lens

**Transformer Ordering Information (to power Integral driver)**

Amerlux offers 100W 48V DC constant current transformers with enclosure.

**TR-48V100W**

1
1 Model
<b>TR-48V100W</b> 100W, 48V transformer with enclosure, 120/277V input

For enclosure drawings &amp; wiring schematics, see pages 7-10. For Fixture with Remote Driver ordering, see page 2.

**PROJECT:**
**TYPE:**
**Specifications**
**Application**

Retail, commercial and hospitality wall mounted accent lighting

**Construction**

Extruded aluminum precision machined body, door & heatsink

**Optical**

TIR optics

Beam Spreads: Spot 15°, Flood 28°, Wide Flood 35°,  
 Very Wide Flood 50°

**LED**

Color Temp: 2400K, 2700K, 3000K, 3500K, 4000K

CRI: 80+ & 90+ typ.

R9 Values: 11 (83 CRI), 55 (92 CRI)

Binning: 3 MacAdam (SDCM)

Life: 50,000+ hrs, > 70% of initial lumens at 50,000 hrs

**Finish**

Powder coat paint

*Consult factory for custom finishes*

**Mounting**

Wall mount

**Certifications**

CSA tested to UL standards

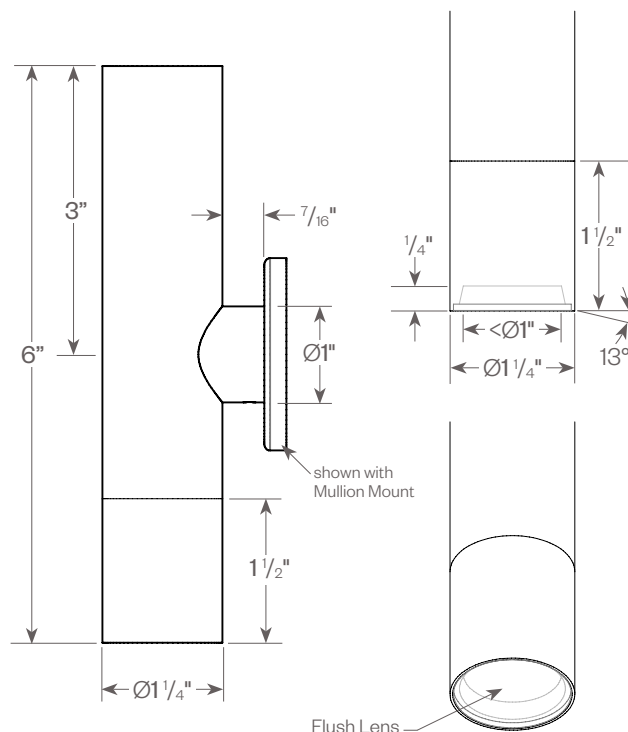
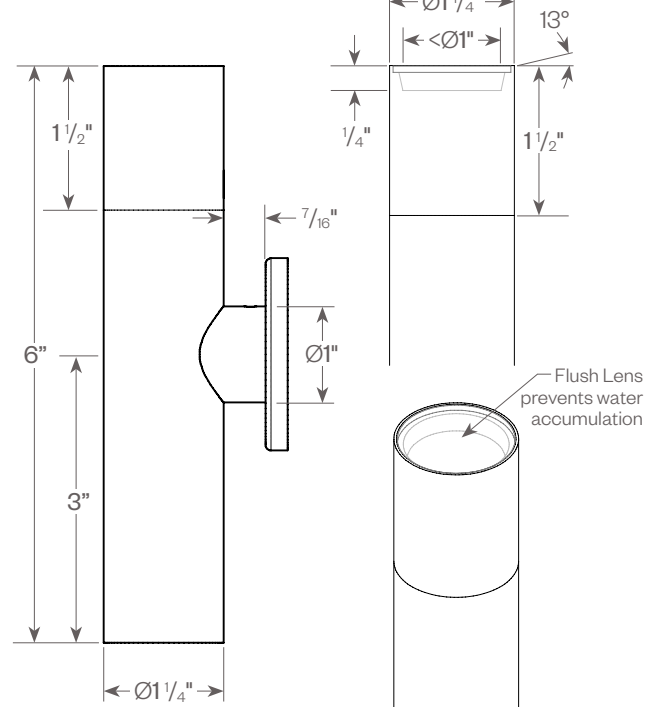
Wet location

**Warranty**

5 year limited warranty

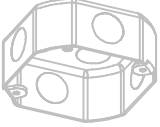
**Electrical** (for Remote Driver)

**This product complies with IEEE C62.41 for surge endurance up to 2.5KV. Amerlux® recommends using additional surge protection with this unit (supplied by others), surge and over voltage damage is not covered under warranty.**

**FIN6X-WD**

**FIN6X-WI**


**PROJECT:**
**TYPE:**

### Junction Box Mounting Requirements



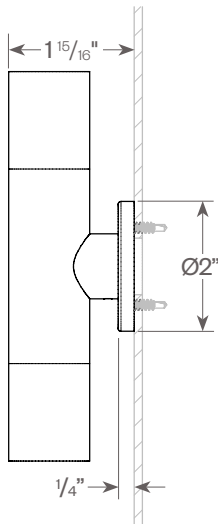
Canopy (C) & Conduit Canopy (CDC) Mounts  
 Require 4" Octagonal Junction Box (by others)



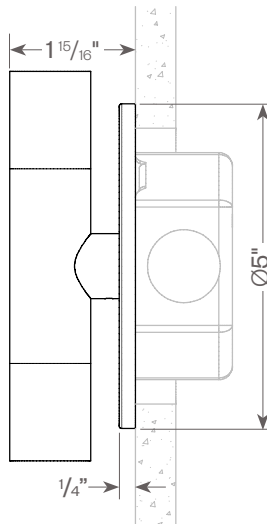
Reduced Canopy (RC) Mounts also  
 Require Raised Cover (by others) for  
 4" Octagonal Junction Box

### Mounting Options

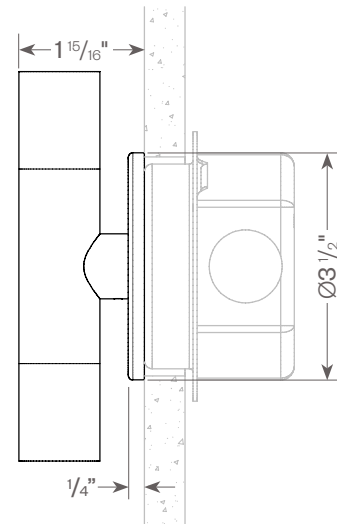
Mullion Mount



Canopy Mount



Reduced Canopy Mount



### Finish Options

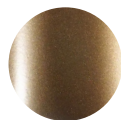
Powder coat paint.  
 Consult factory for custom finishes.



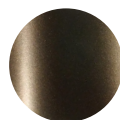
Matte Black



Matte Silver



Bronze



Dark Bronze



Black Texture

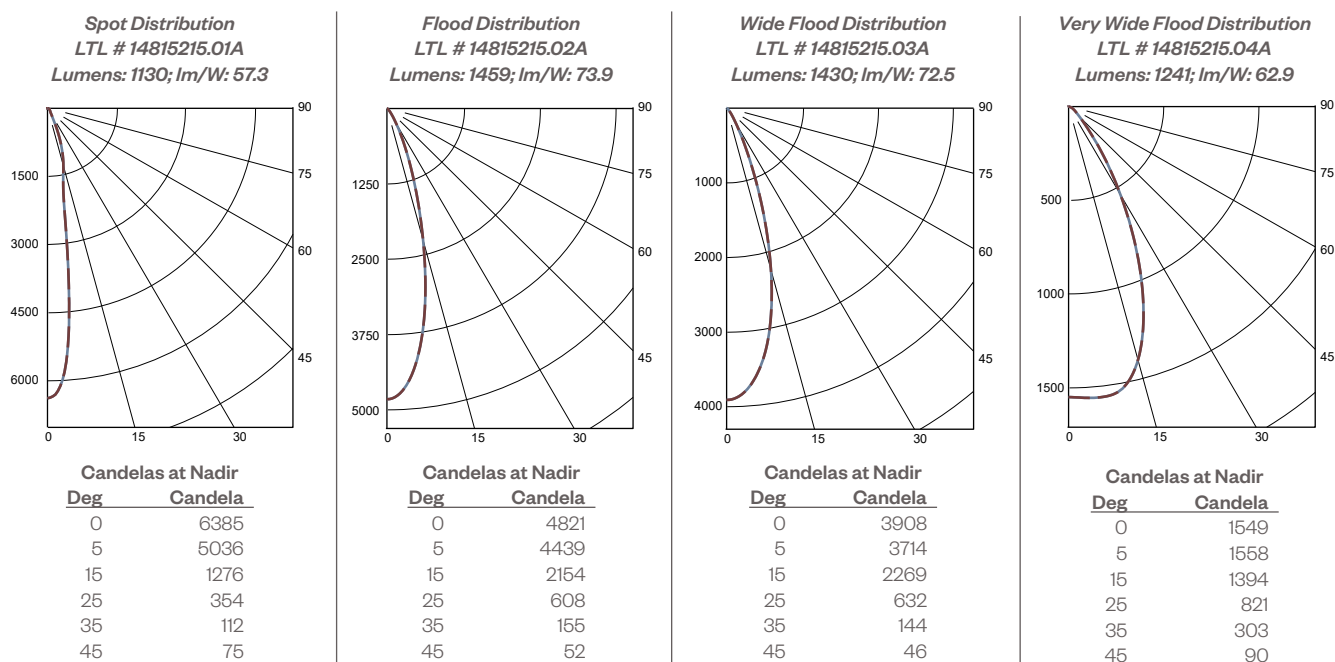
**PROJECT:**
**TYPE:**
**Fixture Data**
**MULTIPLYING FACTORS:**

Wattage:	6W	8W	20W
Factor:	0.44	0.54	1.0

\* Multiplying factors based on IES 20W tested fixture.  
 20W is not available for this fixture type.

CCT:	3000K, 80+	3500K, 80+	4000K, 80+	2400K, 90+	2700K, 90+	3000K, 90+	3500K, 90+	4000K, 90+
Factor:	1.0	1.04	1.06	0.76	0.83	0.88	0.92	0.93

Multiplying Factor is based on 3000K, 80+ 120V IES file on website.

**20W, Direct, Standard Bevel, 3000K, 80+**

**Application Data:**
**Notes and Definitions:**

Beam spread is to 50% center beam candlepower (CBCP).

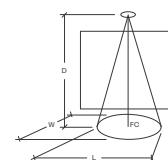
D=Distance to floor or wall.

FC=Footcandles on floor or wall at center beam aiming location.

L=Effective Visual Beam length in feet (50% of maximum footcandle level).


W=Effective Visual Beam width in feet (50% of maximum footcandle level).

CB=Distance across or down to center beam location.



**Spot**


0° Aiming Angle  
Horizontal  
Footcandles



D	FC	L	W
5.0'	158	1.9	1.9
7.5'	91	2.5	2.5
10.0'	57	3.0	3.0
12.5'	38	3.5	3.5

**Flood**


0° Aiming Angle  
Horizontal  
Footcandles



D	FC	L	W
5.0'	178	2.6	2.6
7.5'	85	3.6	3.6
10.0'	49	4.7	4.7
12.5'	31	5.8	5.8

**Wide Flood**


0° Aiming Angle  
Horizontal  
Footcandles



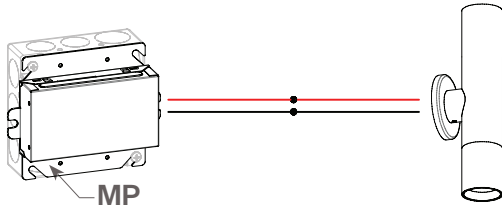
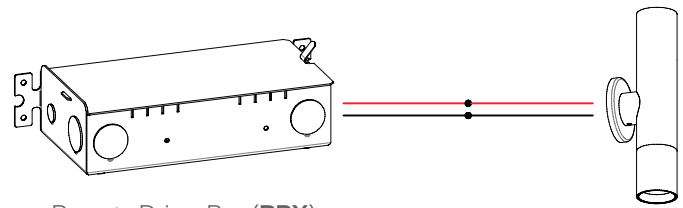
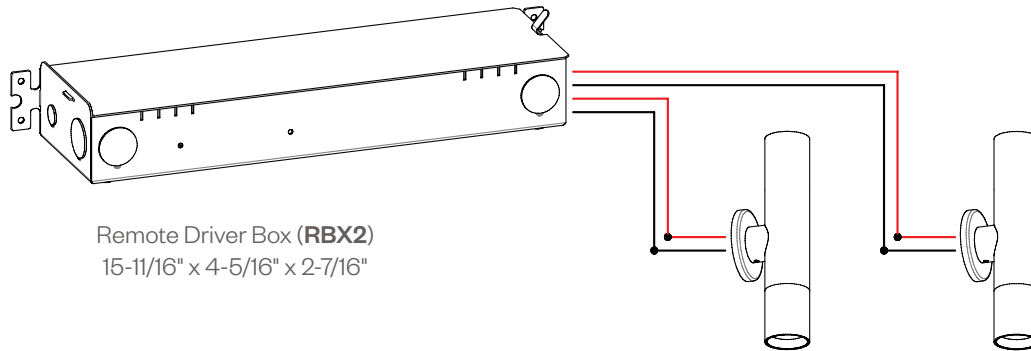
D	FC	L	W
5.0'	138	3.0	3.0
7.5'	66	4.3	4.3
10.0'	38	5.6	5.6
12.5'	25	7.0	7.0

**Very Wide Flood**

0° Aiming Angle  
Horizontal  
Footcandles



D	FC	L	W
5.0'	61	4.2	4.2
7.5'	27	6.3	6.3
10.0'	16	8.4	8.4
12.5'	10	10.6	10.6

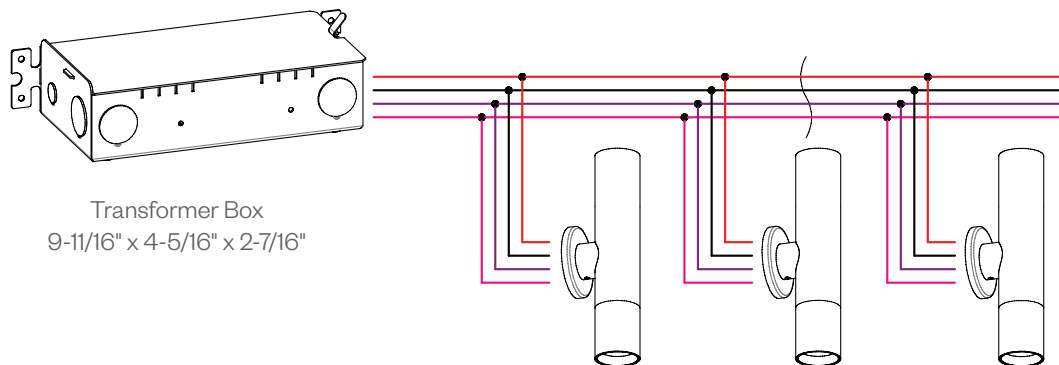
**PROJECT:**
**TYPE:**
**Power Supply Options for Remote Driver**

 Remote Driver with Mounting Plate  
 4" Square Junction Box (by others)

 Remote Driver Box (RBX)  
 9-11/16" x 4-5/16" x 2-7/16"

 Remote Driver Box (RBX2)  
 15-11/16" x 4-5/16" x 2-7/16"

**Please see the example below when choosing the remote driver mounting or enclosure.**

With 10 Finch Cylinders, (fixed, adjustable, Wall Direct or Indirect) would be: 10 FINPW-MP, or 10 FINPW-RBX1, or 5 FINPW-RBX2

**Power Supply Options for Integral Driver**

**TR-48V100W** 100W, 48V transformer with enclosure, 120/277V input


 Transformer Box  
 9-11/16" x 4-5/16" x 2-7/16"

## PROJECT:

## TYPE:

### DIMMING COMPATIBILITY:

Amerlux® Finch fixtures are compatible with all major dimming protocols prevalent in the United States. Please see below for general compatibilities and wiring diagrams. Amerlux recommends testing your unique dimming configuration as the exact full configuration (Dimmer, Fixture Quantity, Voltage, etc) may affect dimming performance.

**--- NOTE: INFORMATION BELOW IS FOR WIRED DIMMERS ONLY. FOR WIRELESS DIMMERS, CONSULT FACTORY ---**

### FOR REMOTE DRIVER OPTION

#### 0-10V - DIMMING

Integrates into a variety of building management and daylighting controls

##### Notes:

- 120VAC or 277VAC
- Dims down to 1% light output
- Requires interface to turn off power to driver
- Consult Dimming manufacturer for installation instructions - DO NOT SHARE NEUTRALS!

##### Compatible Dimmers\*:

###### Wall Box

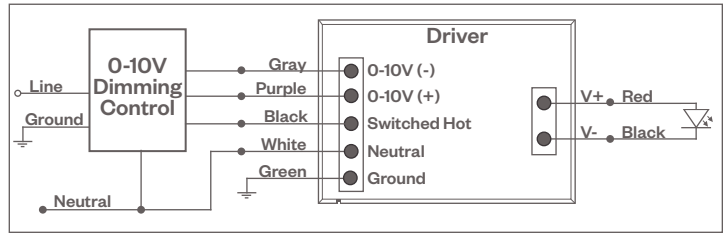
Lutron "Diva" - DTVV with PP-120H Interface

Leviton Renoir II 0-10V

###### Central System

Lutron Grafik Eye with GRX-TVI Interface

#### 0-10V Wiring Diagram



#### DALI DIMMING

Digital control protocol allows individual fixture control

##### Notes:

- 120VAC or 277VAC
- Dims down to 1% light output in most cases

##### Compatible Dimmers\*:

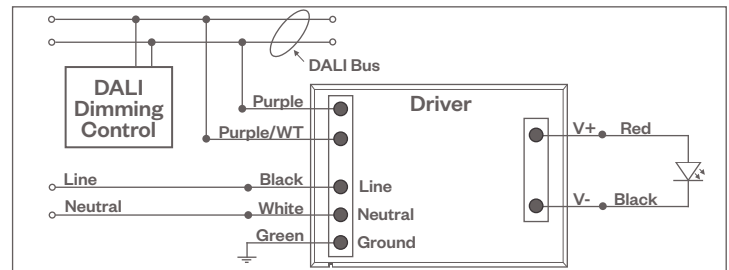
###### Wall Box (3-Wire Fluorescent)

Leviton CD250 Controller

###### Central System

Dynalite  
Fifth Light

#### DALI Wiring Diagram



#### TRIAC (Forward Phase) DIMMING (Standard)

Utilizes standard TRIAC dimmers that are in wide use in installations across the US. Best for retrofit applications where TRIAC dimmers are installed.

##### Notes:

- 120VAC or 277VAC\*
- Dims down to 5% light output (most cases)
- Consult Dimming manufacturer for installation instructions - DO NOT SHARE NEUTRALS!
- Must meet dimmer Minimum Load Requirements per dimming manufacturer

##### Compatible Dimmers\*:

###### Wall Box (TRIAC 120VAC)

Lutron "Diva"

Lutron "Nova-T"

Lutron "Maestro"

Lutron "Vareo"

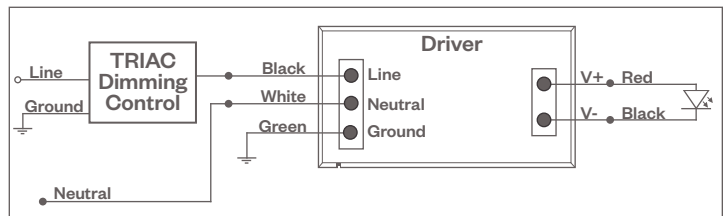
Lutron "Skylark"

###### Central System

Lutron "GP" Panel

Lutron Grafik Eye QS

#### TRIAC Wiring Diagram



##### Notes:

\* Driver is 277VAC dimmable with appropriate dimmer (by others). All provided wiring diagrams show 120VAC wiring colors and method. Please refer to 277VAC dimmer manufacturer installation instructions for 277VAC wiring diagrams.

\* The absence of a dimmer from the lists above does not imply incompatibility. Please consult factory for compatibility inquiries.



**PROJECT:**
**TYPE:**
**DIMMING COMPATIBILITY:**

Amerlux® Finch fixtures are compatible with all major dimming protocols prevalent in the United States. Please see below for general compatibilities and wiring diagrams. Amerlux recommends testing your unique dimming configuration as the exact full configuration (Dimmer, Fixture Quantity, Voltage, etc) may affect dimming performance.

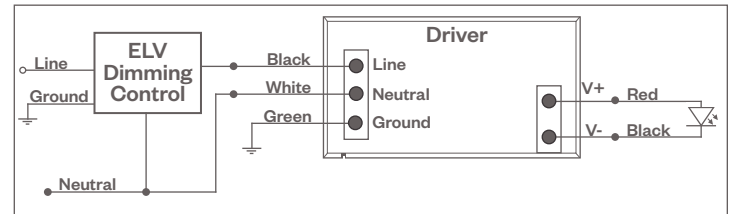
**--- NOTE: INFORMATION BELOW IS FOR WIRED DIMMERS ONLY. FOR WIRELESS DIMMERS, CONSULT FACTORY ---**

**FOR REMOTE DRIVER OPTION**
**ELV - Electronic Low Voltage (Reverse Phase) DIMMING**

Utilizes specialized "ELV" dimmers.

**Notes:**

- 120VAC or 277VAC\*
- Dims down to 5% light output (most cases)
- Consult Dimming manufacturer for installation instructions - DO NOT SHARE NEUTRALS!
- Must meet dimmer Minimum Load Requirements

**ELV Wiring Diagram**

**Compatible Dimmers†:**

Wall Box (ELV 120VAC)	Wall Box (ELV 277VAC)	Central System
Lutron "Diva" Lutron "Nova-T" Lutron "Maestro" Lutron "Vareo" Lutron "Skylark" Leviton "Surslide" Leviton "Vizio"	Leviton Revoir II AWSMT-E	Lutron "GP" Panel with PHPM-PA 120/277VAC Lutron Grafik Eye QS with PHPM-PA 120/277VAC

**Notes:**

\* Driver is 277VAC dimmable with appropriate dimmer (by others). All provided wiring diagrams show 120VAC wiring colors and method. Please refer to 277VAC dimmer manufacturer installation instructions for 277VAC wiring diagrams.

† The absence of a dimmer from the lists above does not imply incompatibility. Please consult factory for compatibility inquiries.

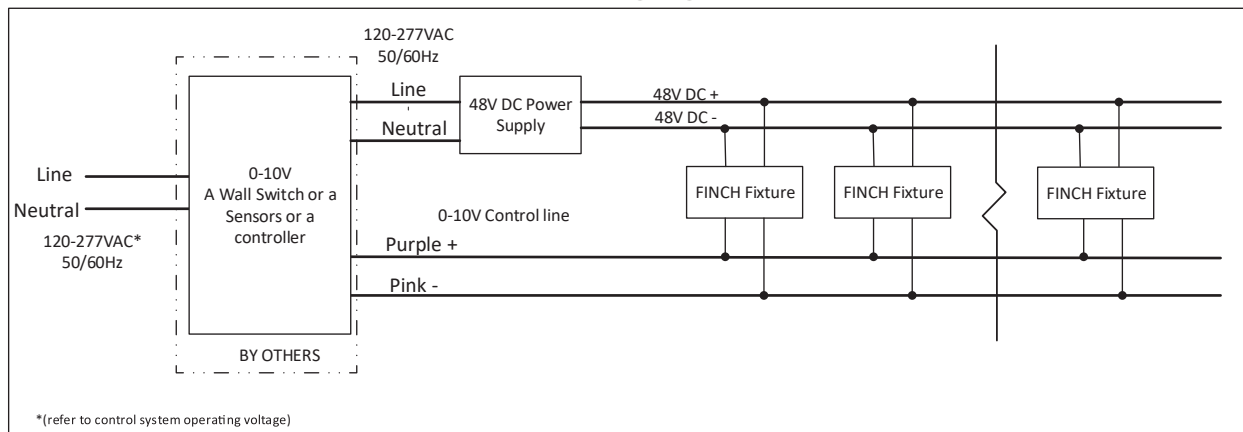
**PROJECT:**
**TYPE:**
**DIMMING COMPATIBILITY:**

Amerlux® Finch fixtures are compatible with all major dimming protocols prevalent in the United States. Please see below for general compatibilities and wiring diagrams. Amerlux recommends testing your unique dimming configuration as the exact full configuration (Dimmer, Fixture Quantity, Voltage, etc) may affect dimming performance.

--- NOTE: INFORMATION BELOW IS FOR WIRED DIMMERS ONLY. FOR WIRELESS DIMMERS, CONSULT FACTORY ---

**FOR INTEGRAL DRIVER OPTION (fed by 48V DC Power Supply/Transformer)**

**0-10V - DIMMING** Integrates into a variety of building management and daylighting controls

**0-10V Wiring Diagram**

**Notes:**

- Dims down to 1% light output
- Consult dimming control manufacturer for the operational and installation instructions - DO NOT SHARE NEUTRALS

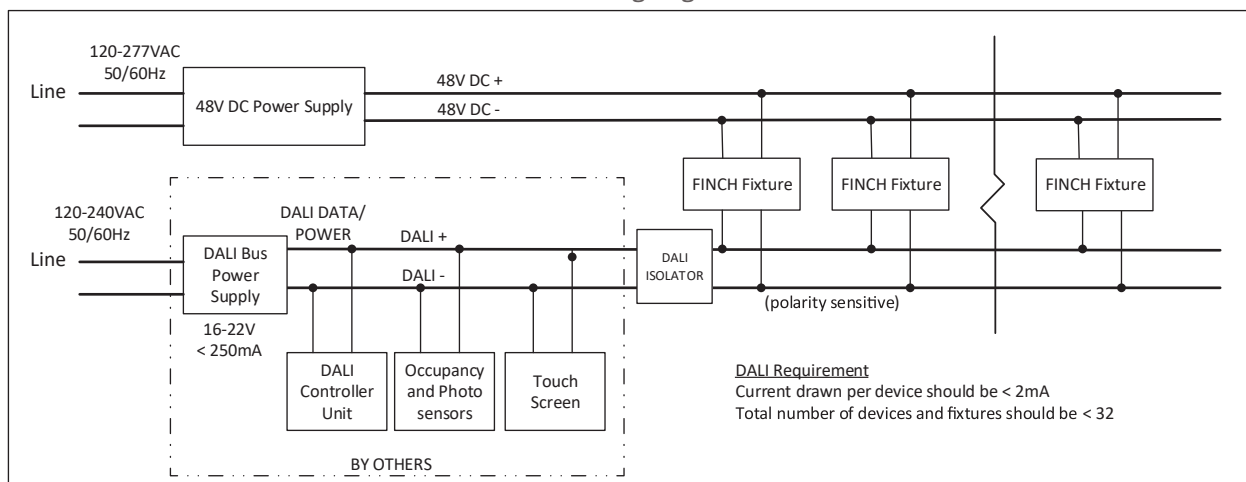
**Compatible Dimmers\*:**
**Wall Box**

Lutron "Diva" - v with PP-120H Interface  
 Leviton Renoir II 0-10V

**Central System**

Lutron Grafik Eye with GRX-TVI Interface

**DALI DIMMING** Digital control protocol allows individual fixture control

**DALI Wiring Diagram**

**Suggested Switches for Wired Connection:**

Manufacturer	Model	
Loytec DALI PSU	L-DALI-PWR2-U	DALI Bus Power Supply, 85-240VAC input, 2 channel DALI PSU, 116mA per channel
Loytec Controller	L-DALI-ME204-U	DALI Controller, 4 channel DALI
Loytec Controller	L-DALI-ME201-U	DALI Controller, 1 DALI channel with integrated DALI power supply
B.E.G	PP-DALI-PS	DALI Bus Power Supply, 120-277VAC input, 100mA bus power