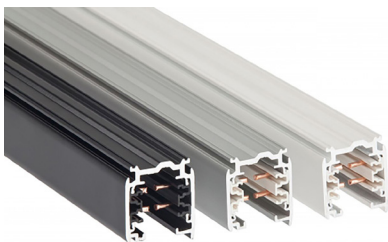


# TEK Global Track

2 Circuit/2 Neutral, 120V



## Features

Global TEK track is a 120V power supply track for Amerlux track-lighting fixtures. Featuring a well-designed extruded aluminum profile which allows suspension points up to 6' o.c., the track offers two independent 20-amp circuits maximizing lighting control options including dimming (using dimmable light sources). This track can be installed in straight runs or configured in patterns using the available track components and accessories.

## Product Overview

Type:	Track Power Supply
Circuit(s):	2 Circuit/2 Neutral
Voltage:	120V
Amps:	20 amps per circuit

## PROJECT:

## TYPE:

## Specifications

### Application

Power supply for Amerlux® track lighting fixtures

### Construction

Architectural grade, extruded aluminum housing  
Milled grounding bar provides continuous ground contact  
Continuously crimped conductor ensures mechanical strength and electrical reliability

### Electrical

2 Circuit/2 Neutral, 120V, 20 amps per circuit

### Finish

Black, White or Gray

### Mounting

T-grid, threaded rod or aircraft cable suspension or surface mount options  
6' max on center suspension points

### Certifications

cUL listed for dry locations only



# TEK Global Track

2 Circuit/2 Neutral, 120V



## PROJECT:

## TYPE:

### Track Ordering Information

1	2
---	---

Track

1	Model	2	Finish
	TEK44 - 4' (48")	1	gray
	TEK48 - 8' (96")	2	black
	TEK412 - 12' (144")	3	white

### Component Ordering Information

### Mounting/Suspension Ordering Information

1	2
---	---

Components (ordered separately)

1	Model
	TEK11 - live end, left (standard)
	TEK12 - live end, right (reverse)
	TEK14 - live center feed
	TEK21* - straight connector
	TEK24 - adjustable connector
	TEK34 - L connector, feedable, adj. universal polarity
	TEK38 - X connector, feedable
	TEK39 - T connector, feedable, adj. right polarity
	TEK40 - T connector, feedable, adj. left polarity
	TEK41* - dead end
	GES15 - outlet box cover (for surface mount drywall only)
	SKB12-1** - ceiling clamp (for cable and rod mounting, aluminum finish only)
	XTSV12** - bending tool (required to bend conductors to proper angle when track is field cut)
	* Compatible with XTS, TEK & HTEK track
	** Finish option not required for this option
2	Finish (for use with TEKxx/GES15 models above)
	1 - gray
	2 - black
	3 - white

Mounting/Suspension Parts (ordered separately, see pg4 for details)

1	Model - Clips
	677-0897 - T-grid clip, 9/16" Flat T (fixed suspension)
	636-0600K - T-grid clip, 9/16" Flat T (sliding suspension)
	677-0801 - T-grid clip, 15/16" Flat T (fixed suspension)
	636-0171K - T-grid clip, 15/16" Flat T Kit (sliding suspension)
	636-0566K - sliding suspension kit (with cable gripper, A/C Cable not included)
	<u>Model - Power Feed/Non-Power Feed (see pg 4 for details):</u>
	636-0578 - power feed metal canopy kit, white (includes aircraft cable; power feed cord ordered separately or by others)
	636-0579 - power feed canopy kit, metal black (includes aircraft cable; power feed cord ordered separately or by others)
	636-0264 - non-power feed canopy kit, black
	636-0268 - non-power feed canopy kit, white
	618-0029-10 - 12/5 SJT power feed cable, white, 10 ft
	618-0029-20 - 12/5 SJT power feed cable, white, 20 ft
	618-0032-10 - 12/5 SJT power feed cable, black, 10 ft
	618-0032-20 - 12/5 SJT power feed cable, black, 20 ft
	301-4366 - aircraft cable suspension kit
	<u>Model - Canopy</u>
	636-0001K - plastic canopy kit, white
	636-0076K - plastic canopy kit, black
	<u>Stem Pendant Mounting (see pg 5 for details):</u>
	701-0039* - power feed suspension point
	701-0040* - non-feed suspension point
	701-0054* - "L" (90°) connector suspension point
	701-0055* - "T" connector suspension point
	701-0056* - "X" connector suspension point
	701-0025 - stem/canopy kit, 12" stem, black texture
	701-0026 - stem/canopy kit, 12" stem, white texture
	701-0050ST - stem/canopy kit, 12" stem, silver texture (gray)
	701-0027 - stem/canopy kit, 18" stem, black texture
	701-0028 - stem/canopy kit, 18" stem, white texture
	701-0051ST - stem/canopy kit, 18" stem silver texture (gray)
	701-0029 - stem/canopy kit, 24" stem, black texture
	701-0030 - stem/canopy kit, 24" stem, white texture
	701-0052ST - stem/canopy kit, 24" stem silver texture (gray)
	701-0031 - stem/canopy kit, 48" stem, black texture
	701-0032 - stem/canopy kit, 48" stem, white texture
	701-0053ST - stem/canopy kit, 48" stem, silver texture (gray)
	* specify length; ** specify finish (-WT, -BT, -ST (gray))
	Consult factory for other T-Grid options

# TEK Global Track

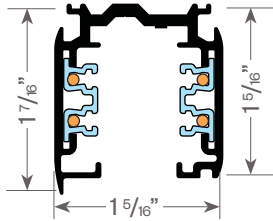
2 Circuit/2 Neutral, 120V



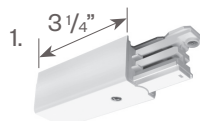
PROJECT:

TYPE:

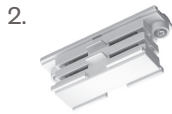
## TEK Track



## TEK Track Components



**TEK11** - Live End, left (standard)  
**TEK12** - Live End, right (reverse)  
(used for Conduit feed also)



**TEK21** - Straight Connector  
(Compatible with XTS, TEK & HTEK track)



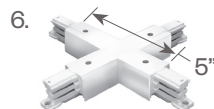
**TEK14** - Live Center Feed



**TEK34** - L Connector, feedable  
(adjustable universal polarity)



a. **TEK39** - T Connector, feedable  
(adjustable right polarity)  
b. **TEK40** - T Connector, feedable  
(adjustable left polarity)



**TEK38** - X Connector,  
feedable

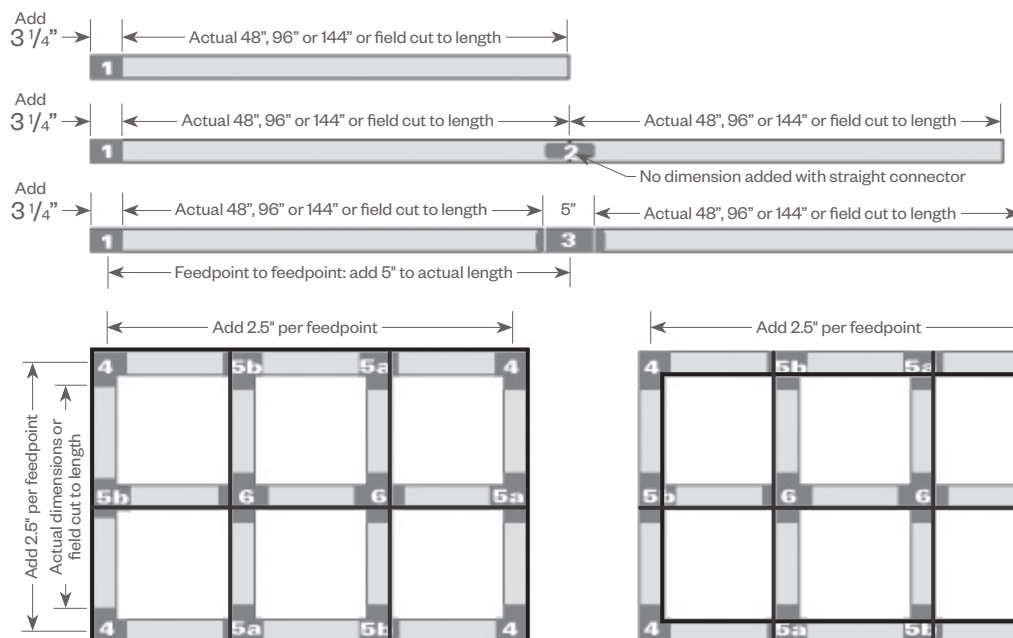


**TEK24** - Adjustable  
Connector



**TEK41** - Dead End  
(Compatible with XTS, TEK & HTEK track)

## TEK Track Configuration



TEK track is polarized and manufactured with identifying ridges (shown as bold lines on diagrams). Refer to these diagrams to ensure proper connector selection.



# TEK Global Track

2 Circuit/2 Neutral, 120V

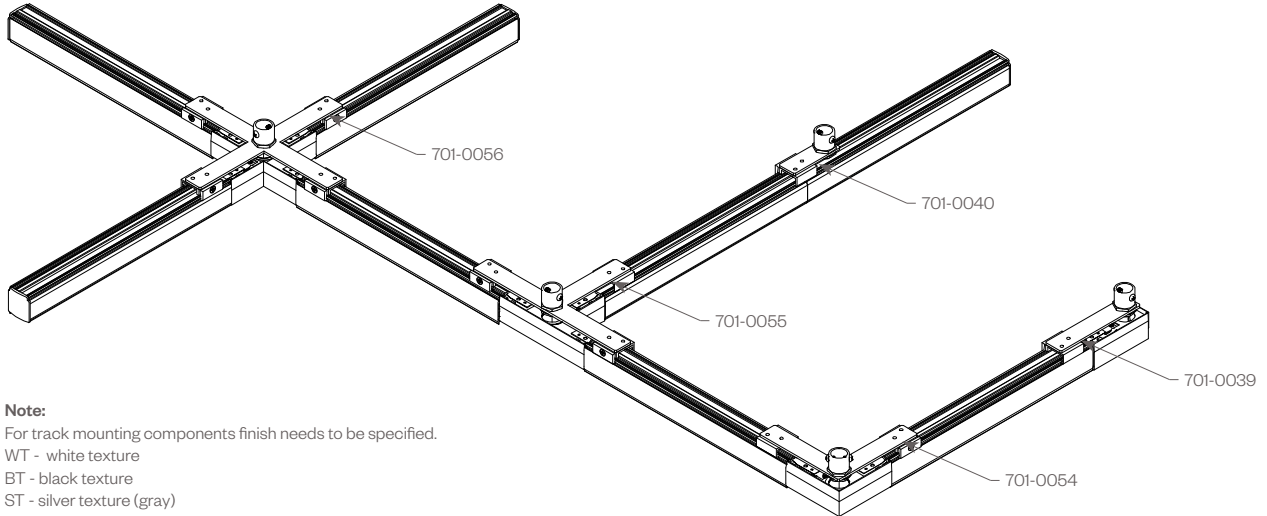


PROJECT:

TYPE:

## STEM MOUNT SUSPENSION

Stems are field cuttable



### Note:

For track mounting components finish needs to be specified.

WT - white texture

BT - black texture

ST - silver texture (gray)

Example:

701-0056-WT

### 3/8" STEM/CANOPY KIT:

Includes crossbar & hardware.

Available in 12", 18", 24" & 48" stem lengths.

Stems are field cuttable.

701-0025 - 12", black texture

701-0026 - 12", white texture

701-0050ST - 12" silver texture (gray)

701-0027 - 18", black texture

701-0028 - 18", white texture

701-0051ST - 18" silver texture (gray)

701-0029 - 24", black texture

701-0030 - 24", white texture

701-0052ST - 24" silver texture (gray)

701-0031 - 48", black texture

701-0032 - 48", white texture

701-0053ST - 48" silver texture (gray)

