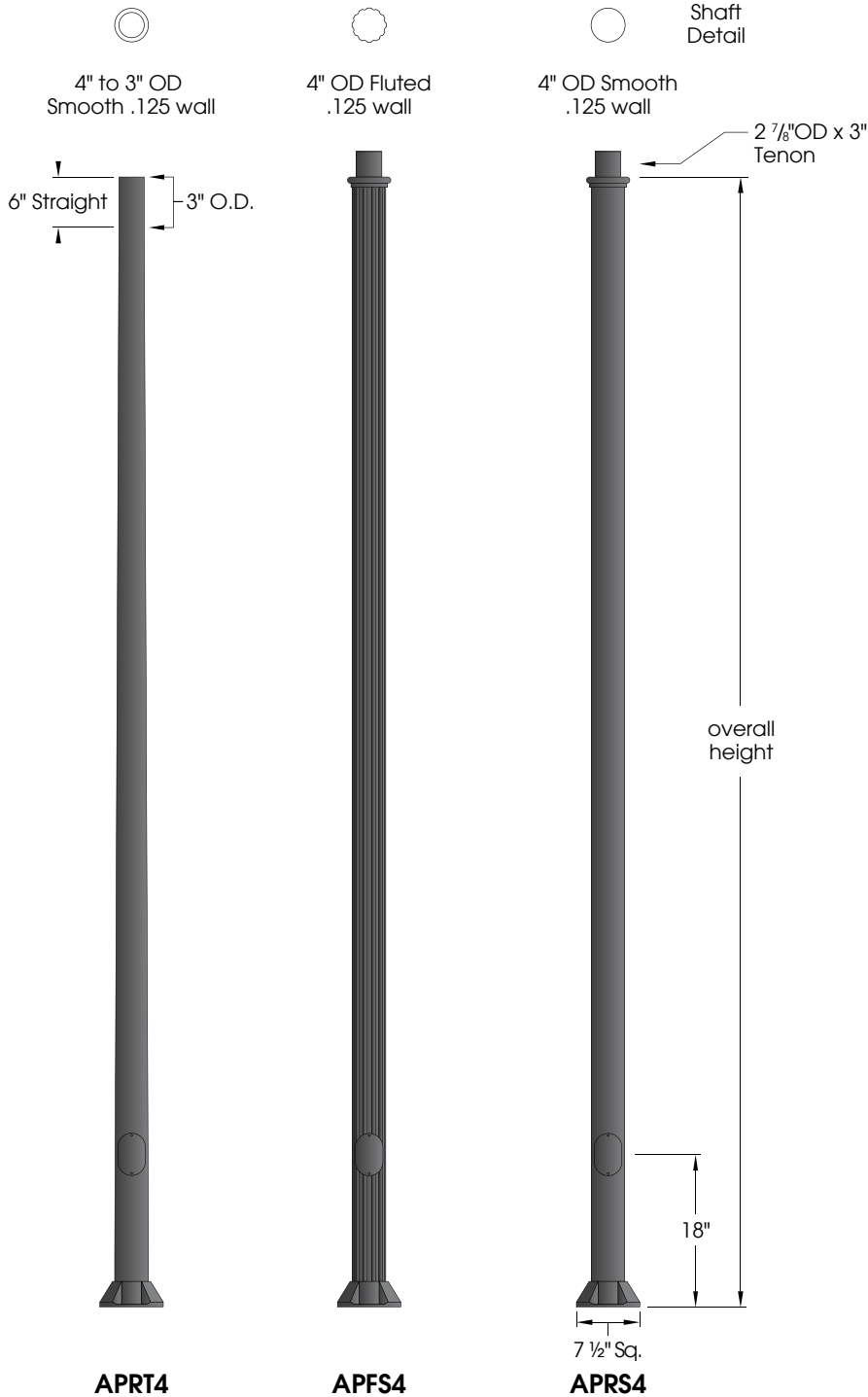


4" Extruded Series

U.1.11.16



Features:

7 1/2" square cast aluminum base flange

Choice of extruded shafts (.125 wall)

- 4" to 3" tapered smooth
- 4" OD fluted (12 flutes)
- 4" OD smooth round

Extruded shaft is circumferentially welded to the base

A 2x4" handhole with curved lap style aluminum door and two stainless steel self-tapping screws is standard. A grounding provision incorporating a tapped 1/4" 20NC hole is provided opposite the handhole.

Ground lug provided inside base

Materials:

Base - Cast aluminum (356-T6)
 Shaft - Extruded Aluminum (6063-T6)
 - Tapered Aluminum (6063-T6)
 Anchor Bolts - Hot dipped galvanized steel

Finish:

Premium quality thermoset polyester powdercoat for a durable finish.



Part String

Example: APRT4-10/BLK

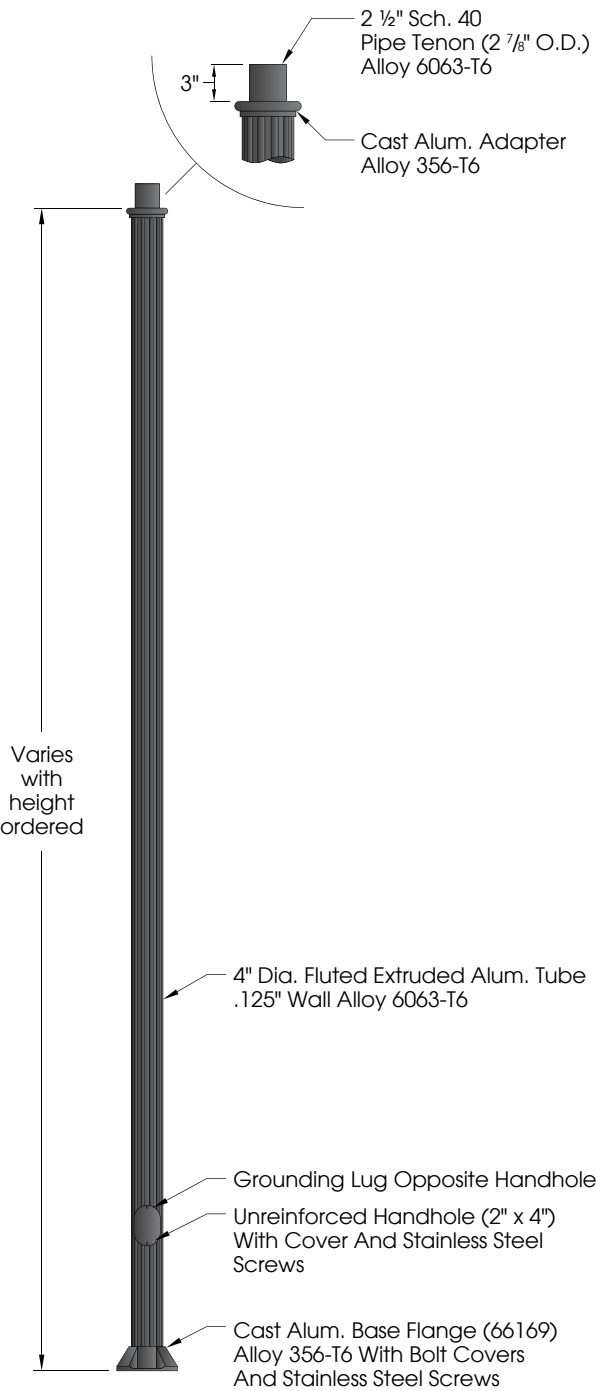
APRT4	APFS4	APRS4	Overall Height	Finish	Accessories
APRT4-08	APFS4-08	APRS4-08	8'-0"	BLK CLB GBZ GRN GTB TBK TGR	4-COV BA18 BA24 FPH-4 FPH-5 GFCI
APRT4-10	APFS4-10	APRS4-10	10'-0"		
APRT4-12	APFS4-12	APRS4-12	12'-0"		
APRT4-14	APFS4-14	APRS4-14	14'-0"		
APRT4-16	APFS4-16	APRS4-16	16'-0"		

See next page for more complete accessory options

800.364.0098 • Fax: 281.997.5441 • www.amerluxexterior.com

Amerlux reserves the right to change details that do not affect overall function and performance.





Finish

The post will be finished with an electrostatically applied thermoset polyester powder coat. Prior to finishing, the parts are thoroughly cleaned. Our powder coat finish is durable, long lasting, attractive and scratch resistant as well as environmentally friendly. We offer 6 stock finishes or hundreds of special order colors including custom matching for existing projects (additional charges apply).

- BLK** - Satin Black
- CLB** - Classic Bronze
- GBZ** - Gloss Textured Bronze
- GRN** - Green
- GTB** - Gloss Textured Black
- TBK** - Textured Black
- TGR** - Gloss Textured Green

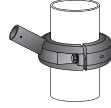
Accessories

See "Accessories" section for more information



Banner Arms

Single or double sided field rotatable banner arms. **BA18** (18") or **BA24** (24") banner arms **FRC4** (4"OD shaft) or **FRC5** (5"OD shaft) Add a (2) for a double arm. Example: **2BA18-FRC4**



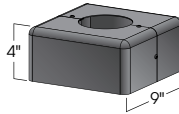
FPH-4

Extruded aluminum holder for 1" OD flag poles. Available for 4" OD non-tapered pole.



GFCI

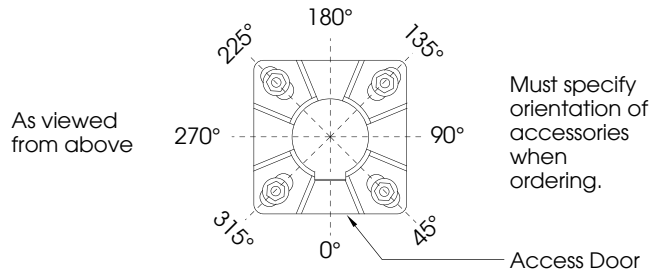
Ground fault circuit protected duplex outlet. Available Recess mounted (GFCI-RM) as shown or surface mount (GFCI-SM).



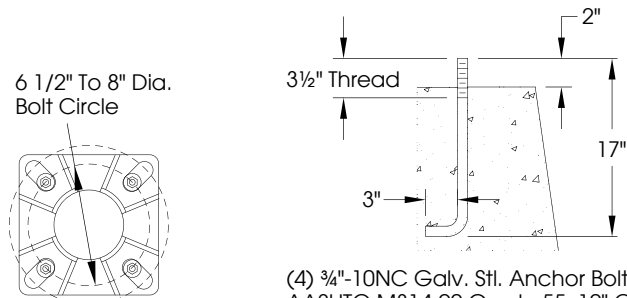
4-COV

Two piece cover is fabricated from stamped and formed aluminum.

Accessory Orientation Guide



Anchor Details



- (4) 3/4"-10NC Galv. Stl. Anchor Bolts, AASHTO M314-90 Grade 55, 10" Of Threaded End Galv. Per ASTM A153.
- (4) 3/4"-10NC Galv. Stl. Hex. Nuts
- (4) 3/4" Galv. Stl. Lockwashers
- (4) 3/4" Galv. Stl. Flatwashers

Anchor bolts and templates can be requested prior to product shipment.

