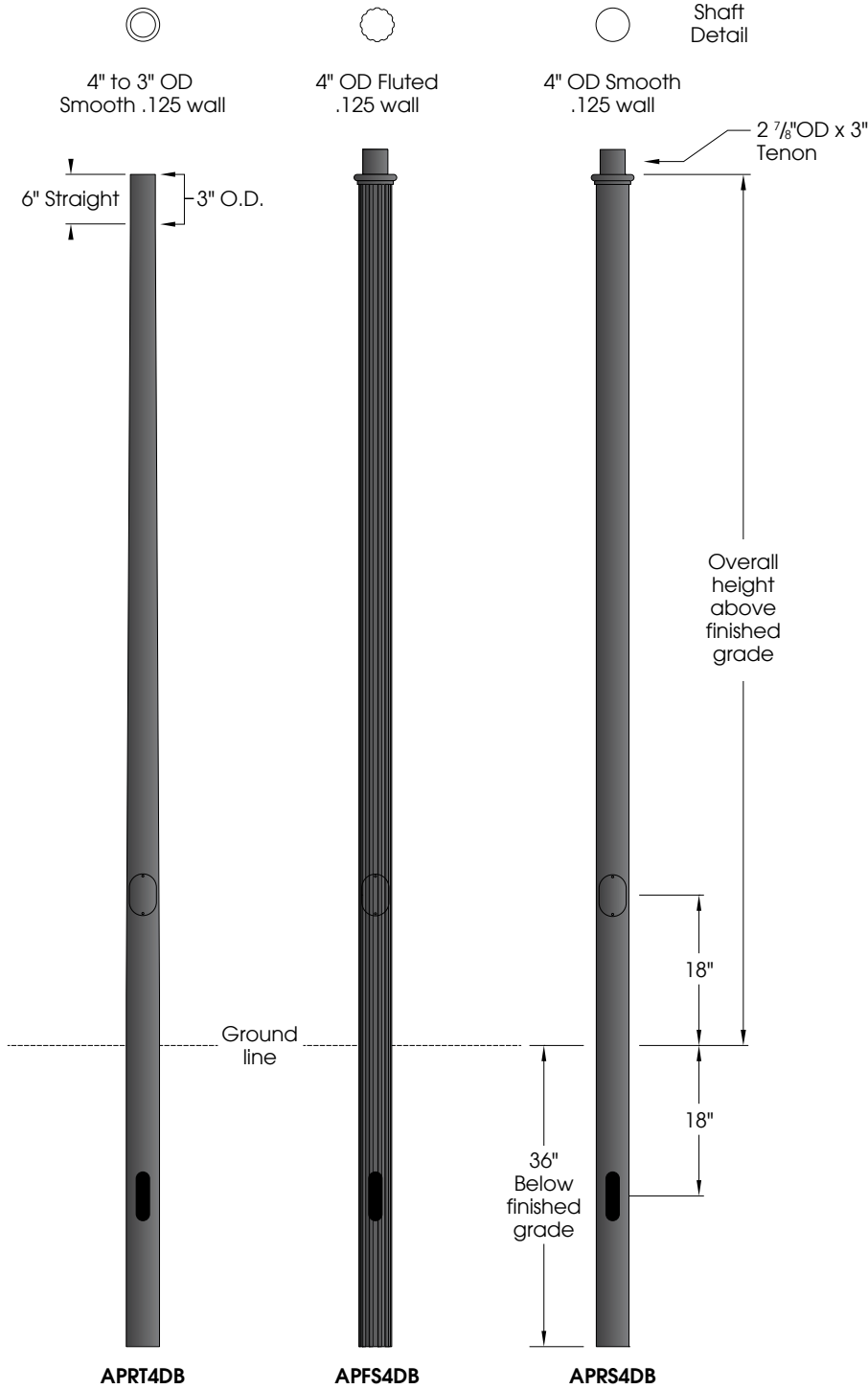


4" Direct Burial Series

U.10.3.16



Features:

- Choice of extruded shafts (.125 wall)
 - 4" to 3" tapered smooth
 - 4" OD fluted (12 flutes)
 - 4" OD smooth round

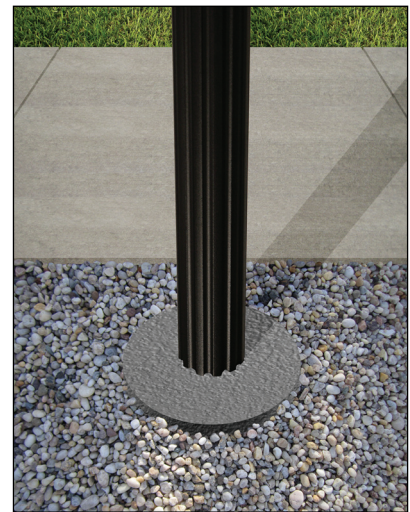
A 2x4" handhole with curved lap style aluminum door and two stainless steel self-tapping screws is standard. A grounding provision incorporating a tapped 1/4" 20NC hole is provided opposite the handhole.

Materials:

- Shaft - Extruded Aluminum (6063-T6)
- Tapered Aluminum (6063-T6)

Finish:

Premium quality thermoset polyester powdercoat for a durable finish.



Part String

Example: APRT4DB-10/BLK

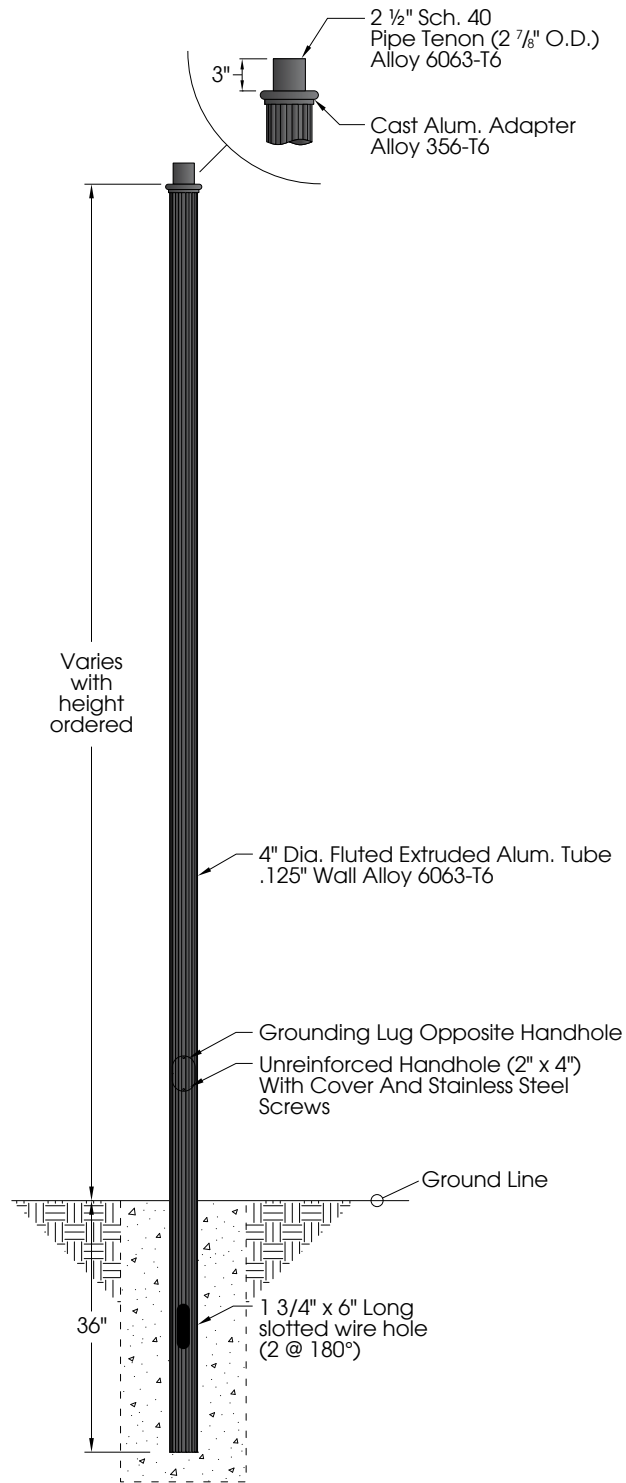
APRT4DB	APFS4DB	APRS4DB	Above Grade Height	Finish	Accessories
APRT4DB-08	APFS4DB-08	APRS4DB-08	8'-0"	BLK CLB GBZ GRN GTB TBK TGR	4-COV BA18 or BA24 FPH-4 or FPH-5 GFCI AP2600-WR AP9200-WR
APRT4DB-10	APFS4DB-10	APRS4DB-10	10'-0"		
APRT4DB-12	APFS4DB-12	APRS4DB-12	12'-0"		
APRT4DB-14	APFS4DB-14	APRS4DB-14	14'-0"		
APRT4DB-16	APFS4DB-16	APRS4DB-16	16'-0"		

See next page for more complete accessory options

800.364.0098 • Fax: 281.997.5441 • www.amerluxexterior.com

Amerlux reserves the right to change details that do not affect overall function and performance.





Finish
The post will be finished with an electrostatically applied thermoset polyester powder coat. Prior to finishing, the parts are thoroughly cleaned. Our powder coat finish is durable, long lasting, attractive and scratch resistant as well as environmentally friendly. We offer 7 stock finishes or hundreds of special order colors including custom matching for existing projects (additional charges apply).

- | | |
|------------------------------------|-----------------------------------|
| BLK - Satin Black | GTB - Gloss Textured Black |
| CLB - Classic Bronze | TBK - Textured Black |
| GBZ - Gloss Textured Bronze | TGR - Gloss Textured Green |
| GRN - Green | |

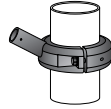
Accessories

See "Accessories" section for more information



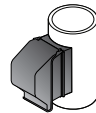
Banner Arms

Single or double sided field rotatable banner arms. **BA18** (18") or **BA24** (24") banner arms **FRC4** (4"OD shaft) or **FRC5** (5"OD shaft) Add a (2) for a double arm. Example: **2BA18-FRC4**



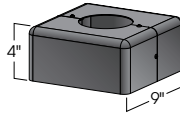
FPH-4

Extruded aluminum holder for 1" OD flag poles. Available for 4" OD non-tapered pole.



GFCI

Wet while in use ground fault circuit protected duplex outlet. Standard recess mounted (**GFCI-RM-WWIU**) as shown or surface mount (**GFCI-SM-WWIU**).



4-COV

Two piece cover is fabricated from stamped and formed aluminum.

Decorative Bases

WR

Wrap around cover will consist of two identical halves (split vertically) that will bolt or screw together after being positioned on the pole. This style is generally easier to install on existing poles.



AP2600-WR
2 piece base



AP9200-WR
2 piece base