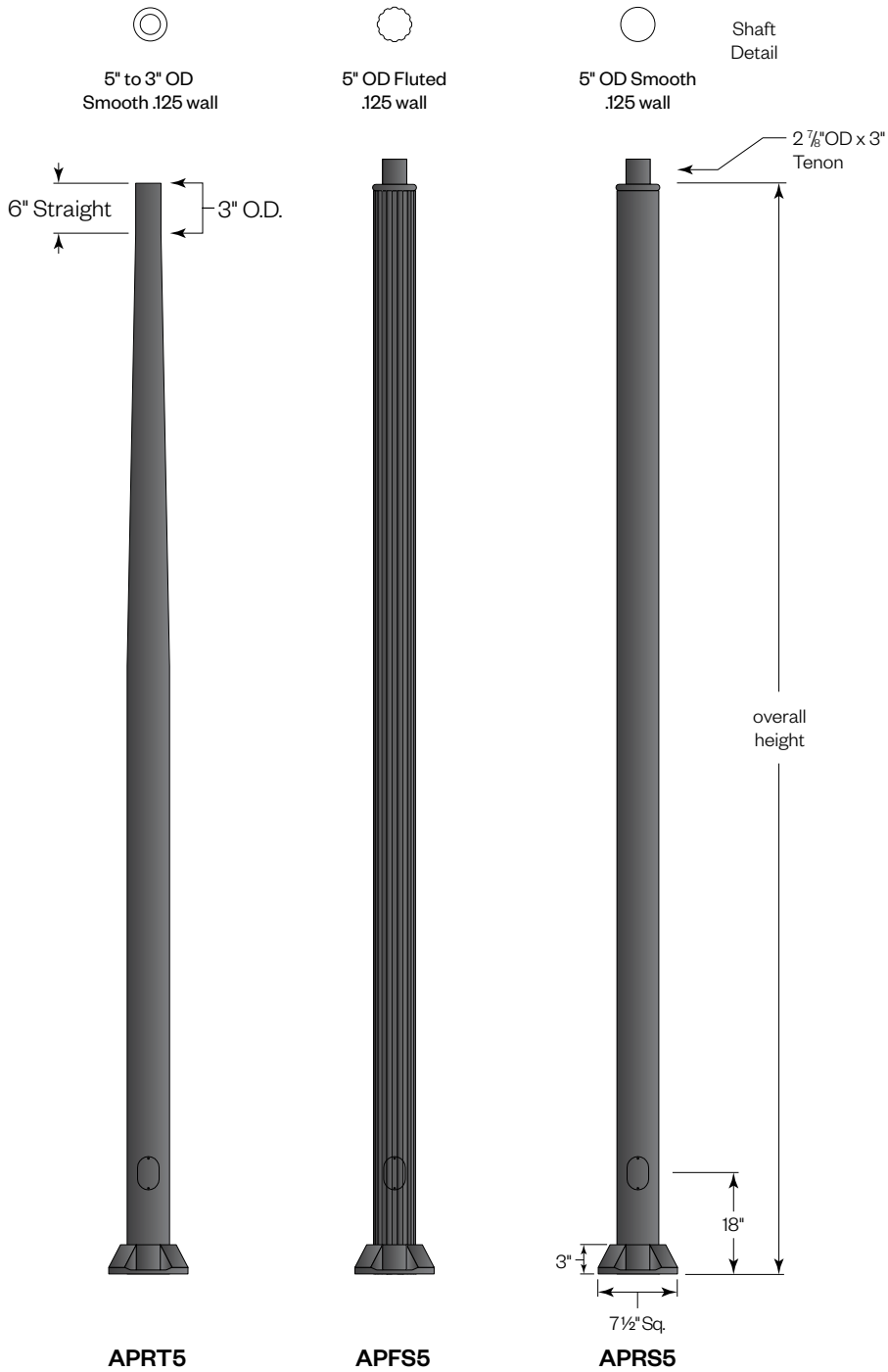


5" Extruded Series

U.1.10.18



Features:

7 1/2" square cast aluminum base flange

Choice of extruded shafts (.125 wall)

- 5" to 3" tapered smooth
- 5" OD fluted (12 flutes)
- 5" OD smooth round

Extruded shaft is circumferentially welded to the base

A 2x4" handhole with curved lap style aluminum door and two stainless steel self-tapping screws is standard. A grounding provision incorporating a tapped 1/4" 20NC hole is provided opposite the handhole.

Ground lug provided inside base

Materials:

- Base - Cast aluminum (356-T6)
- Shaft - Extruded Aluminum (6063-T6)
 - Tapered Aluminum (6063-T6)
- Anchor Bolts - Hot dipped galvanized steel

Finish:

Premium quality thermoset polyester powdercoat for a durable finish.



Part String

Example: **APRT5-10/BLK**

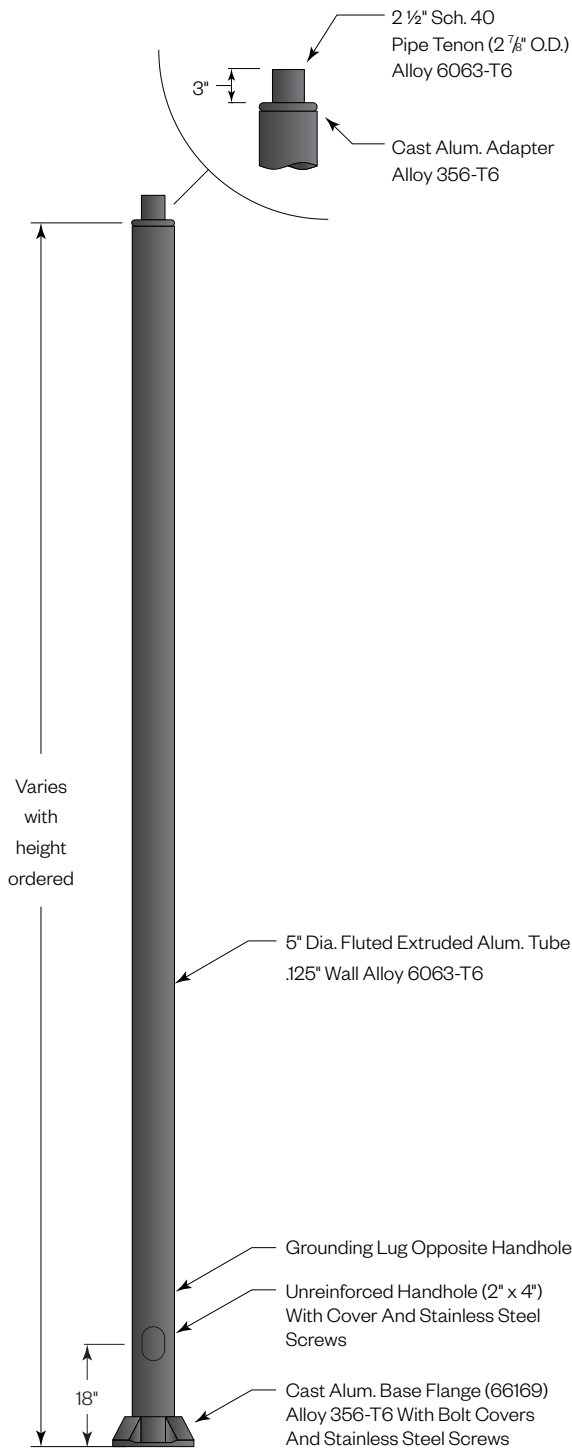
APRT5	APFS5	APRS5	Overall Height	Finish	Accessories
APRT5-08	APFS5-08	APRS5-08	8'-0"	BLK	5-COV
APRT5-10	APFS5-10	APRS5-10	10'-0"	CLB	BA18
APRT5-12	APFS5-12	APRS5-12	12'-0"	GBZ	BA24
APRT5-14	APFS5-14	APRS5-14	14'-0"	GRN	FPH-4
APRT5-16	APFS5-16	APRS5-16	16'-0"	GTB	FPH-5
				TBK	GFCI
				TGR	

See next page for more complete accessory options

800.364.0098 • Fax: 281.997.5441 • www.amerlux.com

Amerlux reserves the right to change details that do not affect overall function and performance.





Finish

The post will be finished with an electrostatically applied thermoset polyester powder coat. Prior to finishing, the parts are thoroughly cleaned. Our powder coat finish is durable, long lasting, attractive and scratch resistant as well as environmentally friendly. We offer 6 stock finishes or hundreds of special order colors including custom matching for existing projects (additional charges apply).

BLK - Satin Black

CLB - Classic Bronze

GBZ - Gloss Textured Bronze

GRN - Green

GTB - Gloss Textured Black

TBK - Textured Black

TGR - Gloss Textured Green

Accessories

See "Accessories" section for more information



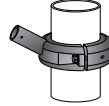
Banner Arms

Single or double sided field rotatable banner arms.

BA18 (18") or **BA24** (24") banner arms

FRC4 (4" OD shaft) or **FRC5** (5" OD shaft)

Add a (2) for a double arm. Example: **2BA18-FRC5**



FPH-5

Extruded aluminum holder for 1" OD flag poles.

Available for 4" OD non-tapered pole.

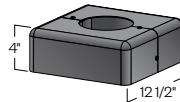


GFCI

Ground fault circuit protected duplex outlet. Available

Recess mounted (**GFCI-RM**) as shown or surface

mount (**GFCI-SM**).

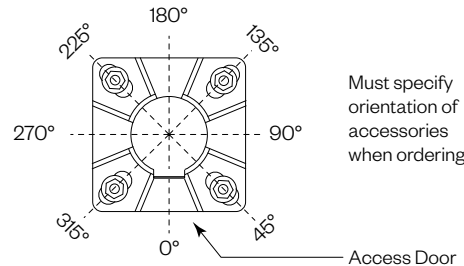


5-COV

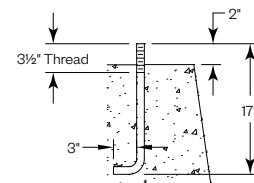
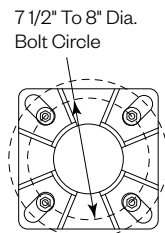
Two piece cover is fabricated from stamped and formed aluminum.

Accessory Orientation Guide

As viewed from above



Anchor Details



(4) 3/4"-10NC Galv. Stl. Anchor Bolts, AASHTO M314-90 Grade 55, 10" Of Threaded End Galv. Per ASTM A153.

(4) 3/4"-10NC Galv. Stl. Hex. Nuts

(4) 3/4" Galv. Stl. Lockwashers

(4) 3/4" Galv. Stl. Flatwashers