

Acion

Large LED Accent

ACCL / BLK



Features

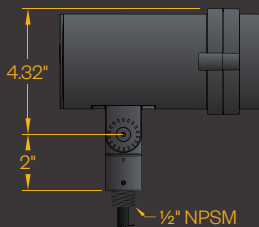
The Amerlux Acion accent luminaire employs solid state technology and precision engineering to provide small scale LED solutions in landscape and architecture layouts. All components are encapsulated inside a single attractive enclosure designed for superior performance in weather resistant applications. Offered in a choice of beam spreads, finishes, and color temperatures, two mounting options and glare shield are also available.

Product Overview

| | |
|---------------|--------------------------------|
| Wattage: | 17W |
| Lumen Output: | 1,360 lm |
| Color Temp: | 2,700K / 3,000K / 3,500K |
| Dimming: | ELV trailing edge dimming only |

PROJECT:

TYPE:



Construction:

- Die-cast aluminum
- IP67 sealed optical chamber and integral driver chamber
- Easy "two-screw" integral driver access, does not disturb optical chamber seal
- Flush lens prevents puddles/water deposits in upward facing applications
- 180° Knuckle mount
- Vertical aiming lock, with tamper-resistant tooled locking after final aiming

Optics:

- Lumen maintenance: 70% @ 50,000 hours
- 10°, 15°, 30°, 40°, 60°, 60x10, 60x30, 90x60 beam spreads are available with secondary shaping lens

Electrical:

- Integral driver
- Input voltage 120v-277v auto-sensing
- 1/2" NPSM wire entry
- Drive current 700mA
- Power consumption 17W
- ELV trailing edge dimming only

ETL listed, suitable for wet locations.

Mounting Accessories:

- Order Separately
- Ground Stake (**GSP17**)
 - Junction Box (**JBOX**)
 - Junction Mount (**JCOV**)

Optical Accessories:

- Hexell Louver (**HCL**)
- Half Glare Shield (**HGL**)

Finish:

Premium quality thermoset polyester powdercoat for a durable finish.

BLK -Satin Black
CLB -Classic Bronze

GRN -Green
CSTM -Custom



PROJECT:

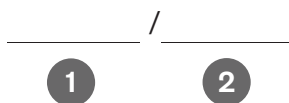
TYPE:

Ordering Information



- 1** Model
ACCL
- 2** Color Temp
27 - 2,700K
30 - 3,000K
35 - 3,500K
- 3** Beam Spread
10 - 10°
15 - 15°
30 - 30°
40 - 40°
60 - 60°
H6010 - 60x10
H6030 - 60x30
H9060 - 90x60
V6010 - 60x10
V6030 - 60x30
V9060 - 90x60
- 4** Finish
BLK -Satin Black
CLB -Classic Bronze
GRN -Green
CSTM -Custom
- 5** Optical Accessories
HCL - Hexell Louver
HGL - Half Glare Shield

Mounting Accessories Ordering Information



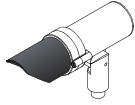
- 1** Mounting Accessories
GSP17 - Ground Stake (black polycarbonate)
JBOX - Junction Box (specify finish)
JCOV - Junction Mount (specify finish)
- 2** Finish
BLK -Satin Black
CLB -Classic Bronze
GRN -Green
CSTM -Custom

PROJECT:

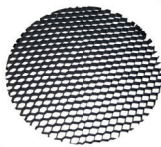
TYPE:

Optical Accessories:

HGL
(Glare Shield)



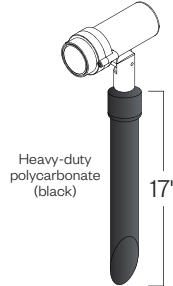
HCL
(Hexell Louver)



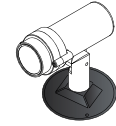
Mounting Accessories:

Order Separately

GSP17
(Ground Stake)



JCOV
(Junction Mount)



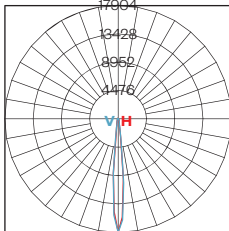
JBOX
(Junction Box)



Finish will match luminaire color.

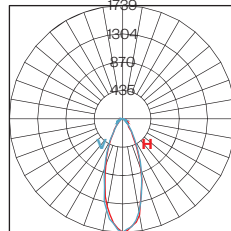
Optical Performance:

Polar Graph
ACCL-27K-10



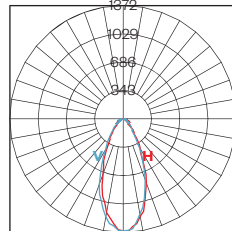
Maximum Candela = 17904
Located At Horizontal Angle = 0
Vertical Angle = 0
H - Horizontal Axial Candela
V - Vertical Axial Candela

Polar Graph
ACCL-27K-30



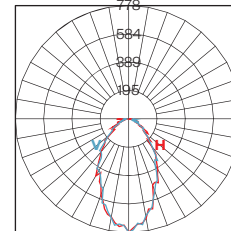
Maximum Candela = 1739
Located At Horizontal Angle = 0
Vertical Angle = 0
H - Horizontal Axial Candela
V - Vertical Axial Candela

Polar Graph
ACCL-27K-40



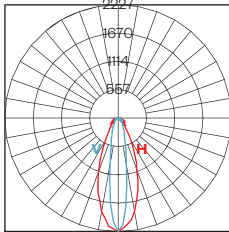
Maximum Candela = 1372
Located At Horizontal Angle = 2.5
Vertical Angle = -2.5
H - Horizontal Axial Candela
V - Vertical Axial Candela

Polar Graph
ACCL-27K-60



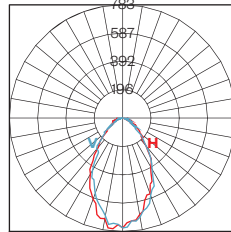
Maximum Candela = 778
Located At Horizontal Angle = 0
Vertical Angle = 0
H - Horizontal Axial Candela
V - Vertical Axial Candela

Polar Graph
ACCL-27K-60X10



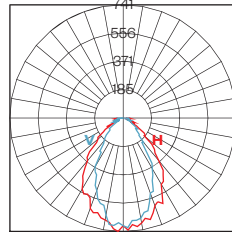
Maximum Candela = 2227
Located At Horizontal Angle = 0
Vertical Angle = 0
H - Horizontal Axial Candela
V - Vertical Axial Candela

Polar Graph
ACCL-27K-60X30



Maximum Candela = 783
Located At Horizontal Angle = -5
Vertical Angle = 2.5
H - Horizontal Axial Candela
V - Vertical Axial Candela

Polar Graph
ACCL-27K-60X90



Maximum Candela = 741
Located At Horizontal Angle = -2.5
Vertical Angle = 0
H - Horizontal Axial Candela
V - Vertical Axial Candela

Data represents the use of light shaping filters
Complete photometric data (ies format) available upon request

Performance Chart

| | Beam Spread | Approx. Lumens | Total Efficacy |
|--------------------|----------------------|----------------|----------------|
| Symmetric Pattern | 10 (10°) | 1240-1360 | 72-80 lm/W |
| | 15 (15°) | 1190-1305 | 70-76 lm/W |
| | 30 (30°) | 1140-1250 | 67-73 lm/W |
| | 40 (40°) | 1130-1250 | 66-73 lm/W |
| | 60 (60°) | 1110-1190 | 65-70 lm/W |
| Horizontal Pattern | H6010 (60x10) | 980-1180 | 57-69 lm/W |
| | H6030 (60x30) | 1070-1190 | 62-70 lm/W |
| | H9060 (90x60) | 1050-1170 | 61-68 lm/W |
| Vertical Pattern | V6010 (60x10) | 1180-980 | 69-57 lm/W |
| | V6030 (60x30) | 1190-1070 | 70-62 lm/W |
| | V9060 (90x60) | 1170-1050 | 68-61 lm/W |