

# AO21 SERIES LUMINAIRE

U.10.17.18

## DESCRIPTION:

Lighting for exterior retail, commercial and hospitality environments. The AO21 Series consists of a decorative acorn combined with one of several styles of cast aluminum fitters.

## ELECTRICAL:

- High power factor ballast (HPF), core and coil type, pre-wired and tested
- Easy ballast pod access
- 4KV pulse rated porcelain socket
- Suitable for wet location

**ETL listed, suitable for wet locations.**

## INSTALLATION:

The luminaire will mount to a 3" OD post or tenon with 5/16" black oxide coated stainless steel set screws to ensure a solid connection. The diffuser will be held to the fitter by (4) 1/4-20" black oxide coated stainless steel captive set screws.

## DIFFUSER CHOICES:

- Clear Textured Polycarbonate (**PC-CL**)
- White Textured Polycarbonate (**PC-WH**)
- Clear Textured DR Acrylic (**DR-CL**)

## ACCESSORIES:

- Cast aluminum Finial (**CFIN**)
- 90 Degree house-side shield (**HSS-90**)
- 180 Degree house-side shield (**HSS-180**)
- Dusk-to-dawn Photocell (**PCL**)

## FINISH:

Durable thermoset polyester powdercoat finish in the following:

- Satin Black (**BLK**)
- Classic Bronze (**CLB**)
- Gloss Textured Bronze (**GBZ**)
- Green (**GRN**)
- Gloss Textured Black (**GTB**)
- Textured Black (**TBK**)
- Gloss Textured Green (**TGR**)

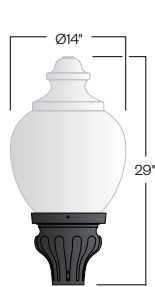


AO21  
HID

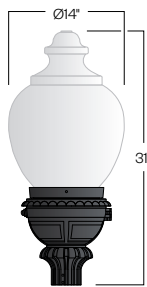


PROJECT:

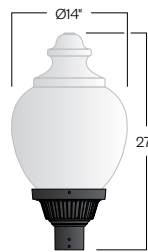
TYPE:



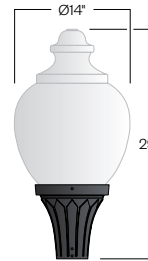
D131/AO21  
EPA: 133



D134/AO21  
EPA: 146



D135/AO21  
EPA: 123



D136/AO21  
EPA: 128

## Ordering Information:

Model	Diffuser Material-Color	Optical Option	Light Source	Voltage	Finish	Accessory
D131/AO21 D134/AO21 D135/AO21 D136/AO21 D138/AO21	PC-CL PC-WH DR-CL	L3 L5 FDR	70MH 100MH 150MH 70HPS 100HPS 150HPS	120v 208v 240v 277v	BLK CLB GBZ GRN GTB TBK TGR Custom	CFIN HSS-90 HSS-180 PCL

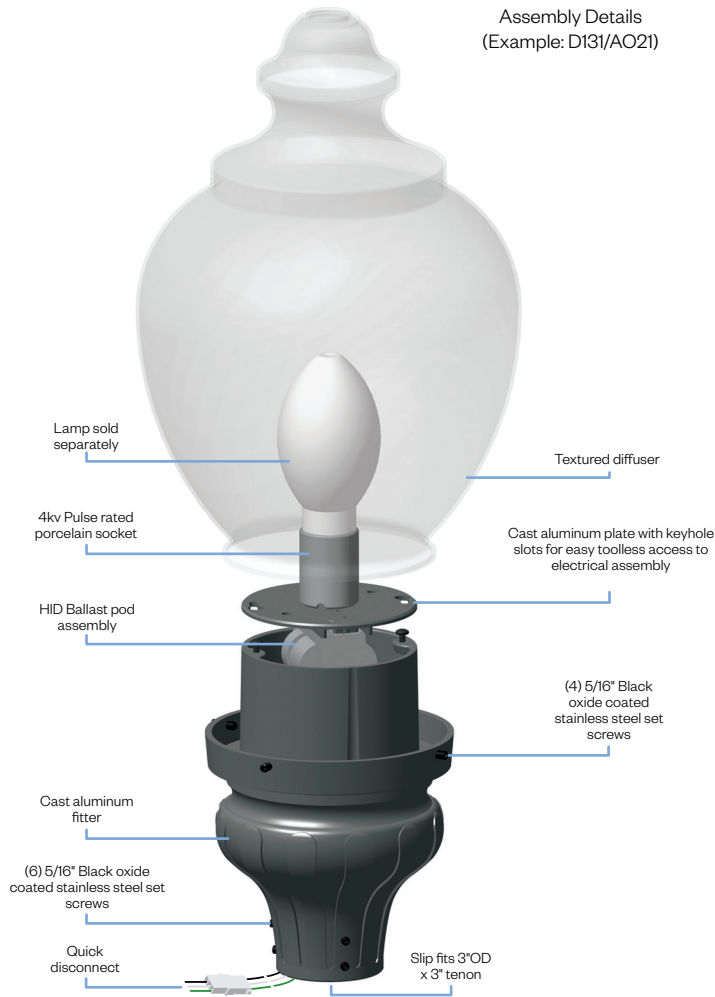
See next page for more complete ordering options



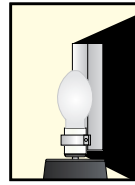
Part String

Example: D131/AO21PC-CL/100MH/120v/BLK

Assembly Details  
(Example: D131/AO21)



Options



**HSS**  
House Side  
Shield for use  
with Optical  
Systems

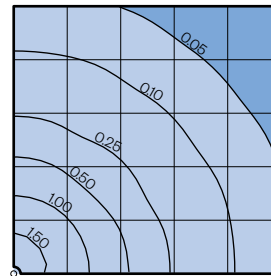


**FDR**  
Faceted  
Downlight  
Reflector



**L3 or L5**  
Type III or  
Type V  
Glass Refractor

Photometry



Typical HID light source  
14,000 Lumen  
12' Mounting Height  
Grid Spacing is 12'

Socket Types

Wattage	Socket Type
<b>70MH, 100MH, 150MH</b>	<b>Medium</b>
<b>70HPS, 100HPS</b>	<b>Medium</b>
<b>150HPS</b>	<b>Mogul</b>