

# AO21 SERIES LUMINAIRE

U.11.14.18

AO21  
HID

## DESCRIPTION:

Lighting for exterior retail, commercial and hospitality environments. The AO21 Series consists of a decorative acorn combined with one of several styles of cast aluminum fitters.

## INSTALLATION:

The luminaire will mount to a 3" OD post or tenon with 5/16" black oxide coated stainless steel set screws to ensure a solid connection. The diffuser will be held to the fitter by (4) 5/16"-18 black oxide coated stainless steel set screws.

## ELECTRICAL:

- High power factor ballast (HPF), core and coil type, pre-wired and tested
- Easy ballast pod access
- 4KV pulse rated porcelain socket
- Suitable for wet location

**ETL listed, suitable for wet locations.**

## DIFFUSER CHOICES:

- Clear Textured Polycarbonate (**PC-CL**)
- White Textured Polycarbonate (**PC-WH**)
- Clear Textured DR Acrylic (**DR-CL**)

## FINISH:

Durable thermoset polyester powdercoat finish in the following:

- Satin Black (**BLK**)
- Classic Bronze (**CLB**)
- Gloss Textured Bronze (**GBZ**)
- Green (**GRN**)
- Gloss Textured Black (**GTB**)
- Textured Black (**TBK**)
- Gloss Textured Green (**TGR**)

## ACCESSORIES:

- Cast aluminum Finial (**CFIN**)
- 90 Degree house-side shield (**HSS-90**)
- 180 Degree house-side shield (**HSS-180**)
- Dusk-to-dawn Photocell (**PCL**)

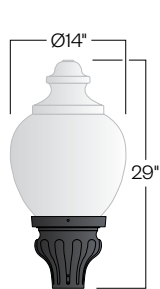


PROJECT:

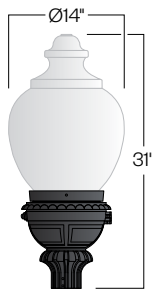
LOCATION:

FIXTURE TYPE:

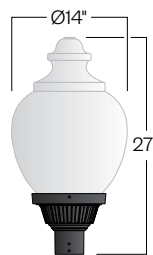
NOTES:



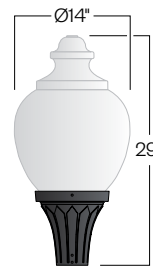
**D131/AO21**  
EPA: 1.33



**D134/AO21**  
EPA: 1.46



**D135/AO21**  
EPA: 1.23



**D136/AO21**  
EPA: 1.28



## Ordering Information

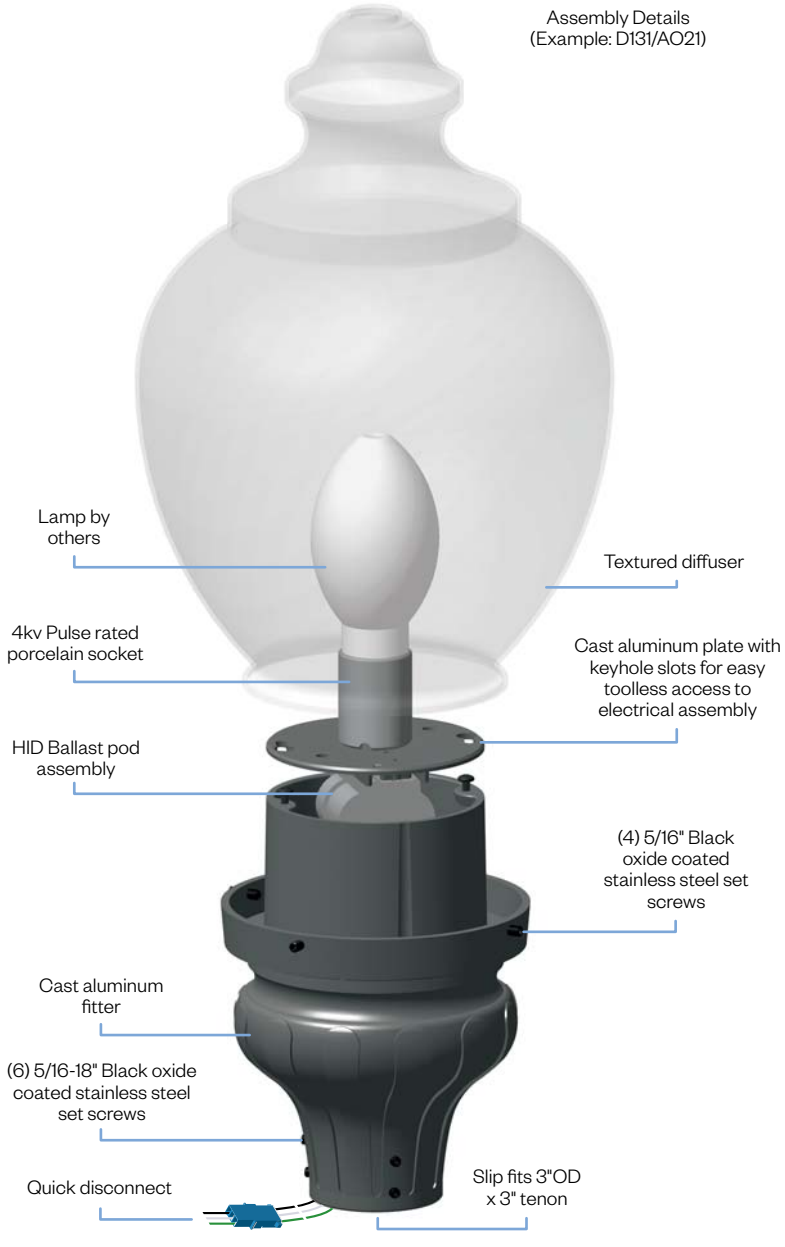


\*Leave blank if not selected

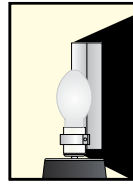
Add additional accessories as needed.

- |  |   |
|--|---|
| <p><b>1</b> <u>Model</u><br/> <b>D131/AO21</b><br/> <b>D134/AO21</b><br/> <b>D135/AO21</b><br/> <b>D136/AO21</b></p> <p><b>2</b> <u>Diffuser Material-Color</u><br/> <b>PC-CL</b> - Clear Textured Polycarbonate<br/> <b>PC-WH</b> - White Textured Polycarbonate<br/> <b>DR-CL</b> - Clear Textured DR Acrylic</p> <p><b>3</b> <u>Optical Option</u> (not required)<br/> <b>L3</b> - Type 3 Refractor<br/> <b>L5</b> - Type 5 Refractor<br/> <b>FDR</b> - Faceted Downlight Reflector</p> <p><b>4</b> <u>Light Source</u><br/> <b>70MH</b> - 70w Metal Halide<br/> <b>100MH</b> - 100w Metal Halide<br/> <b>150MH</b> - 150w Metal Halide<br/> <b>70HPS</b> - 70w High Pressure Sodium<br/> <b>100HPS</b> - 100w High Pressure Sodium<br/> <b>150HPS</b> - 150w High Pressure Sodium</p> <p><b>5</b> <u>Voltage</u><br/> <b>120v</b><br/> <b>208v</b><br/> <b>240v</b><br/> <b>277v</b></p> | <p><b>6</b> <u>Finish</u><br/> <b>BLK</b> - Satin Black<br/> <b>CLB</b> - Classic Bronze<br/> <b>GBZ</b> - Gloss Textured Bronze<br/> <b>GRN</b> - Green<br/> <b>GTB</b> - Gloss Textured Black<br/> <b>TBK</b> - Textured Black<br/> <b>TGR</b> - Gloss Textured Green<br/> <b>CSTM</b> - Custom</p> <p><b>7</b> <u>Accessories</u><br/> <b>CFIN</b> - Cast Aluminum Finial<br/> <b>HSS-90</b> - 90° House Side Shield<br/> <b>HSS-180</b> - 180° House Side Shield<br/> <b>PCL</b> - Dusk-to-dawn button type photocell</p> |
|--|---|

Assembly Details  
(Example: D131/AO21)



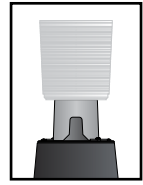
Options



**HSS90 & HSS180**  
House Side Shield  
for use with  
Optical Systems

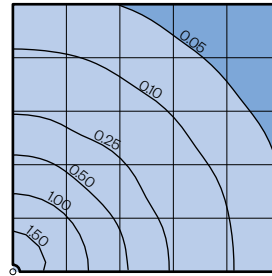


**FDR**  
Faceted  
Downlight  
Reflector



**L3 or L5**  
Type III or  
Type V  
Glass Refractor

Photometry



Typical HID light source  
14,000 Lumen  
12' Mounting Height  
Grid Spacing is 12'

Socket Types

Wattage	Socket Type
<b>70MH, 100MH, 150MH</b>	Medium
<b>70HPS, 100HPS</b>	Medium
<b>150HPS</b>	Mogul