

# AO21 SERIES UTILITY LUMINAIRE

U.6.10.16

AO21  
UTILITY

## Features

- Easy accessibility
- Interchangeable ballast pods
- Ease of maintenance
- Optional light control

## Installation

The luminaire will mount to a 3" OD post or tenon with 5/16" black oxide coated stainless steel square head set screws to ensure a solid connection. The diffuser will be held to the fitter by (4) 5/16 black oxide coated stainless steel captive square head set screws.

## Electrical

- High power factor ballast (HPF), core and coil type, pre-wired and tested (NPF available)
- Easy ballast pod access
- 4KV porcelain socket
- ETL label "suitable for wet location"

## Accessories:

- Brass band (**BB**)
- Brass band with rosettes (**BB-FW**)
- Cast finial (**CFIN**)
- 90 degree house-side shield (**HSS-90**)
- 180 degree house-side shield (**HSS-180**)
- Twist-lock photocell (**PCL-TW**)
- Solid roof (**SR**)

## Diffuser Choices

- Clear textured polycarbonate (**PC-CL**)
- White polycarbonate (**PC-WH**)
- Clear acrylic (**DR-CL**)

## Finish:

Premium quality thermoset polyester powdercoat for a durable finish in the following:

**BLK** - Satin Black

**CLB** - Classic Bronze

**GBZ** - Gloss Textured Bronze

**GRN** - Green

**GTB** - Gloss Textured Black

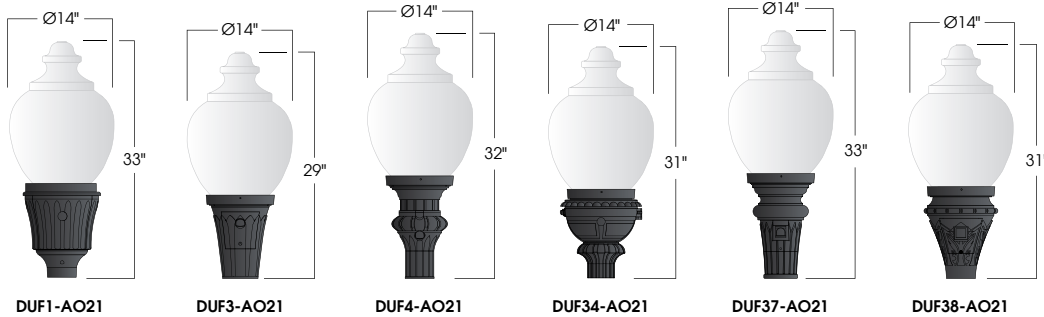
**TBK** - Textured Black

**TGR** - Gloss Textured Green



PROJECT:

TYPE:



## Ordering Information:

Model	Diffuser Material-Color	Optical Option	Light Source	Voltage	Finish	Accessories
DUF1-AO21 DUF3-AO21 DUF4-AO21 DUF34-AO21 DUF37-AO21 DUF38-AO21	PC-CL PC-WH DR-CL	L3 L5 LVR FDR	50,70MH 100MH 150MH 50,70HPS 100HPS 150HPS CFL13,26,32,42	120v 208v 240v 277v	BLK CLB GBZ GRN GTB TBK TGR Custom	BB BB-FW CFIN HSS-90 HSS-180 PCL-TW SR

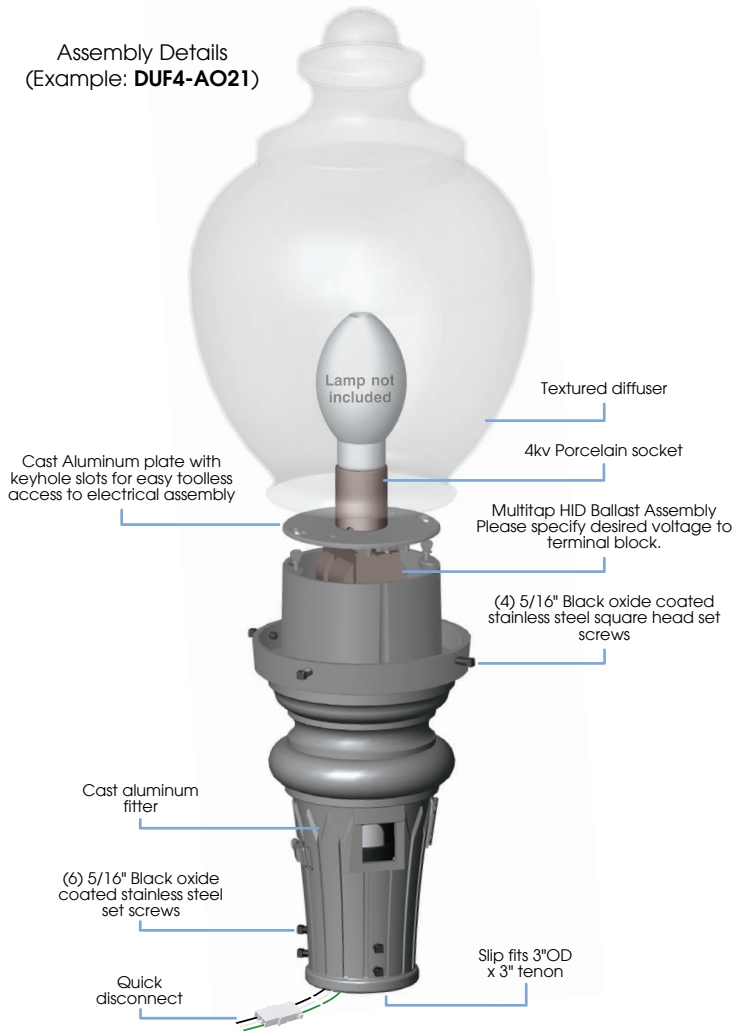
See next page for more complete ordering options



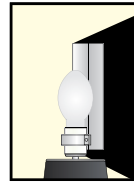
Part String

Example: DUF1-AO21PC-CL/100MH/120v/BLK

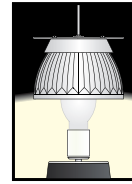
Assembly Details  
(Example: DUF4-AO21)



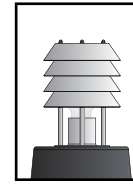
Options



**HSS**  
House Side Shield for use with Optical Systems



**FDR**  
Faceted Downlight Reflector

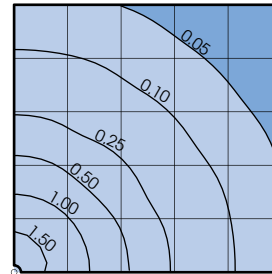


**LVR**  
4 Tier Anodized Aluminum Louver



**L3 or L5**  
Type III or Type V Glass Refractor

Photometry



AO21 Assembly  
175MH lamp  
14,000 Lumen  
12' Mounting Height  
Grid Spacing is 12'

Socket Types

Wattage	Socket Type
50MH, 70MH, 100MH, 150MH	Medium
50HPS, 70HPS, 100HPS	Medium
150HPS	Mogul
CFL13,26,32,42	4-pin

Accessories

