

AO21 SERIES LED LUMINAIRE

U.4.1.16

DESCRIPTION:

Lighting for exterior retail, commercial and hospitality environments. The AO21 Series consists of a decorative acorn combined with one of several styles of cast aluminum fitters.

LED LUMINAIRE:

Multiple LED systems available with convection cooled driver, options for intensity, distribution and color. They operate with over voltage and short circuit protection and automatic voltage sensing for 120 to 277v input. (See next page for LED availability)

- 50,000+ hours of operational life
- Warm 3000K, neutral 4000K, or cool white 5000K color
- Dimmable (controller by others)
- Suitable for wet locations

ETL listed, suitable for wet locations.

INSTALLATION:

The luminaire will mount to a 3" OD post or tenon with 5/16" black oxide coated stainless steel set screws to ensure a solid connection. The diffuser will be held to the fitter by (4) 1/4-20" black oxide coated stainless steel captive set screws.

DIFFUSER CHOICES:

- Clear Textured Polycarbonate (**PC-CL**)
- White Textured Polycarbonate (**PC-WH**)
- Clear Textured DR Acrylic (**DR-CL**)

FINISH

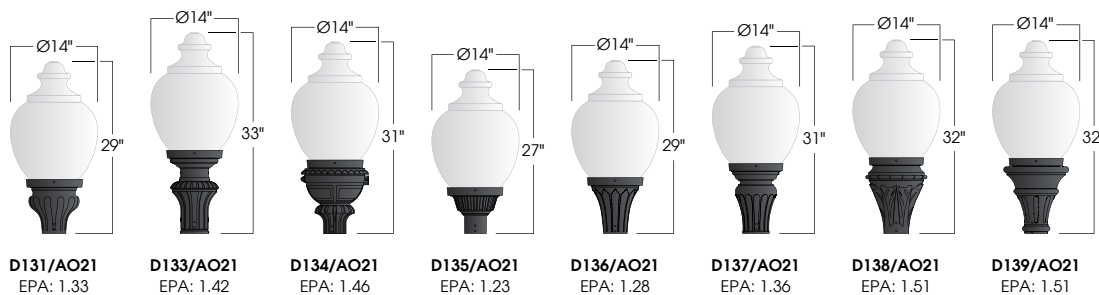
Premium quality thermoset polyester powdercoat for a durable finish in the following:

- | | |
|------------------------------------|-----------------------------------|
| BLK - Satin Black | GTB - Gloss Textured Black |
| CLB - Classic Bronze | TBK - Textured Black |
| GBZ - Gloss Textured Bronze | TGR - Gloss Textured Green |
| GRN - Green | |

AO21
LED



PROJECT:
TYPE:



Ordering Information:

Model	Diffuser Material-Color	LED System	Light Distribution	Order Code	Finish	Option
D131/AO21 D133/AO21 D134/AO21 D135/AO21 D136/AO21 D137/AO21 D138/AO21 D139/AO21	PC-CL PC-WH DR-CL	AVI VLE	AS SY	3L 4L 5L 3H 4H 5H	BLK CLB GBZ GRN GTB TBK TGR Custom	BB BB-FW CFIN PCL

See next page for more complete ordering options




5 year limited warranty
AMERLUX LED



Part String


Example: D131/AO21PC-CL/AVI-SY-3H/BLK

LED Options (bold indicates ordering code)



LED System	Light Distribution	Code	CCT	CRI	Light Engine Lumens	Nominal Input Power
AVI	SY (Symmetric)	3H	3,000K	80	4,450 lm	60W
		4H	4,000K	80	5,100 lm	
		5H	5,000K	70	5,870 lm	
	AS (Asymmetric)	3H	3,000K	80	4,410 lm	
		4H	4,000K	80	5,050 lm	
		5H	5,000K	70	5,810 lm	
	SY	3L	3,000K	80	2,940 lm	41W
		4L	4,000K	80	3,460 lm	
		5L	5,000K	70	4,070 lm	
	AS	3L	3,000K	80	2,910 lm	
		4L	4,000K	80	3,420 lm	
		5L	5,000K	70	4,030 lm	

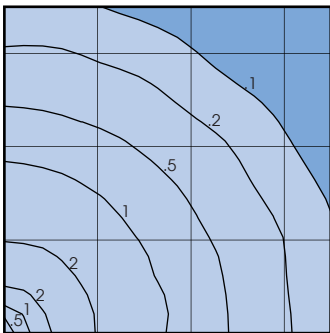
Example: D131/AO21/PC-CL/AVI-SY-3H/BLK



LED System	Light Distribution	Order Code	CCT	CRI	Light Engine Lumens	Nominal Input Power	Dimmable
VLE	SY (Symmetric)	3H	3,000K	80	5,600 lm	80W	0-10V
		4H	4,000K	80	5,700 lm		
		5H	5,000K	70	6,000 lm		
	AS (Asymmetric)	3H	3,000K	80	4,200 lm	60W	
		4H	4,000K	80	4,300 lm		
		5H	5,000K	70	4,500 lm		
	SY	3L	3,000K	80	3,000 lm	40W	
		4L	4,000K	80	3,300 lm		
		5L	5,000K	70	3,600 lm		
	AS	3L	3,000K	80	2,200 lm	30W	
		4L	4,000K	80	2,500 lm		
		5L	5,000K	70	2,800 lm		

Example: D131/AO21/PC-CL/VLE-SY-3H/BLK

Photometry



AO21PC-CL/AVI-SY-5H
 Luminaire Lumens = 4,803
 Scale: 1 Unit = 12 Ft.
 Mounting Height = 12.00 Ft