

# AO21 SERIES LUMINAIRE

U.4.1.16

AO21  
HID

## Description

Lighting for exterior retail, commercial and hospitality environments. The AO21 Series consists of a decorative acorn combined with one of several styles of cast aluminum fitters.

## Electrical

- High power factor ballast (HPF), core and coil type, pre-wired and tested
- Easy ballast pod access
- 4KV pulse rated porcelain socket
- Suitable for wet location

**ETL listed, suitable for wet locations.**

## Installation

The luminaire will mount to a 3" OD post or tenon with 5/16" black oxide coated stainless steel set screws to ensure a solid connection. The diffuser will be held to the fitter by (4) 1/4-20" black oxide coated stainless steel captive set screws.

## Diffuser choices

- Clear Textured Polycarbonate (**PC-CL**)
- White Textured Polycarbonate (**PC-WH**)
- Clear Textured DR Acrylic (**DR-CL**)

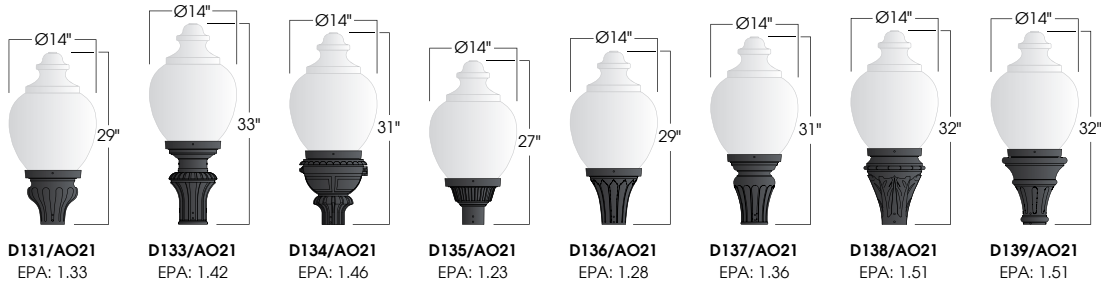
## Finish

Premium quality thermoset polyester powdercoat for a durable finish in the following:

- BLK** - Satin Black
- CLB** - Classic Bronze
- GBZ** - Gloss Textured Bronze
- GRN** - Green
- GTB** - Gloss Textured Black
- TBK** - Textured Black
- TGR** - Gloss Textured Green



PROJECT:  
TYPE:



## Ordering Information:

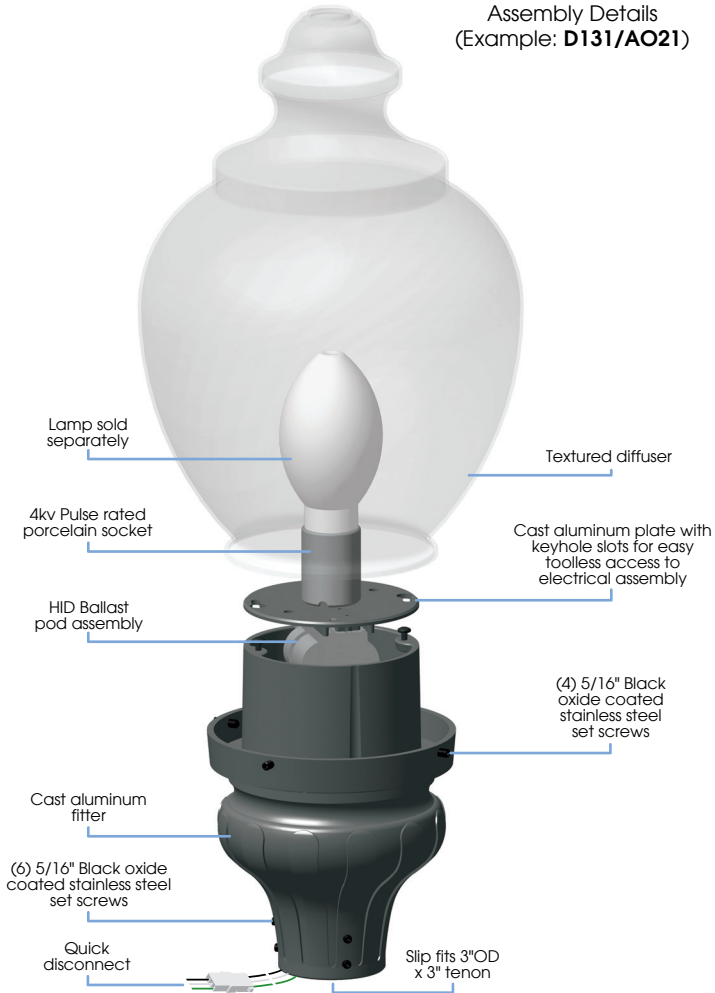
Model	Diffuser Material-Color	Optical Option	Light Source	Voltage	Finish	Accessory
D131/AO21 D133/AO21 D134/AO21 D135/AO21 D136/AO21 D137/AO21 D138/AO21 D139/AO21	PC-CL PC-WH DR-CL	L3 L5 LVR FDR	50,70MH 100MH 150MH 50,70HPS 100HPS 150HPS	120v 208v 240v 277v	BLK CLB GBZ GRN GTB TBK TGR Custom	BB BB-FW CFIN HSS-90 HSS-180 PCL SR

See next page for more complete ordering options

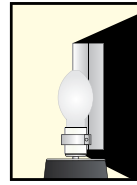
Part String

Example: D131/AO21PC-CL/100MH/120v/BLK

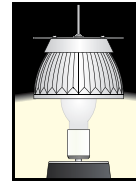
Assembly Details  
(Example: D131/AO21)



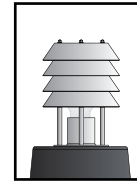
Options



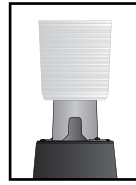
**HSS**  
House Side Shield for use with Optical Systems



**FDR**  
Faceted Downlight Reflector

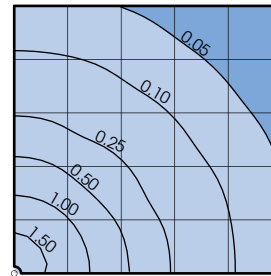


**LVR**  
4 Tier Anodized Aluminum Louver



**L3 or L5**  
Type III or Type V Glass Refractor

Photometry



Socket Types

Wattage	Socket Type
50MH, 70MH, 100MH, 150MH	Medium
50HPS, 70HPS, 100HPS	Medium
150HPS	Mogul