

# AO25 SERIES LUMINAIRE

U.10.17.18

## DESCRIPTION:

Lighting for exterior retail, commercial and hospitality environments. The AO25 Series consists of a decorative acorn combined with one of several styles of cast aluminum fitters.

## ELECTRICAL:

- High power factor ballast (HPF), core and coil type, pre-wired and tested
- Easy ballast pod access
- 4KV pulse rated porcelain socket
- Suitable for wet location

**ETL listed, suitable for wet locations.**

## INSTALLATION:

The luminaire will mount to a 3" OD post or tenon with 5/16" black oxide coated stainless steel set screws to ensure a solid connection. The diffuser will be held to the fitter by (4) 1/4-20" black oxide coated stainless steel captive set screws.

## DIFFUSER CHOICES:

- Clear Textured Polycarbonate (**PC-CL**)
- White Textured Polycarbonate (**PC-WH**)
- Clear Textured DR Acrylic (**DR-CL**)

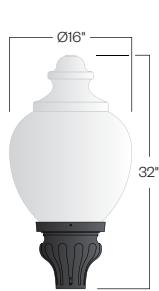
## ACCESSORIES:

- Cast aluminum Finial (**CFIN**)
- 90 Degree house-side shield (**HSS-90**)
- 180 Degree house-side shield (**HSS-180**)
- Dusk-to-dawn Photocell (**PCL**)

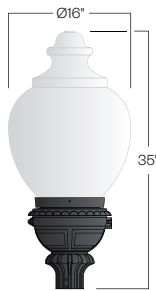
## FINISH:

Durable thermoset polyester powdercoat finish in the following:

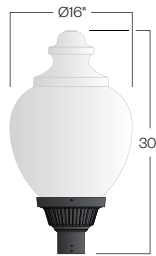
- Satin Black (**BLK**)
- Classic Bronze (**CLB**)
- Gloss Textured Bronze (**GBZ**)
- Green (**GRN**)
- Gloss Textured Black (**GTB**)
- Textured Black (**TBK**)
- Gloss Textured Green (**TGR**)



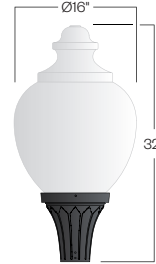
D131/AO25  
EPA:164



D134/AO25  
EPA:177



D135/AO25  
EPA:154



D136/AO25  
EPA:159

## Ordering Information:

Model	Diffuser Material-Color	Optical Option	Light Source	Voltage	Finish	Accessory
D131/AO25 D134/AO25 D135/AO25 D136/AO25 D138/AO25	PC-CL PC-WH DR-CL	L3 L5 FDR	70MH 100MH 150MH 70HPS 100HPS 150HPS	120v 208v 240v 277v	BLK CLB GBZ GRN GTB TBK TGR Custom	CFIN HSS-90 HSS-180 PCL

See next page for more complete ordering options

AO25  
HID



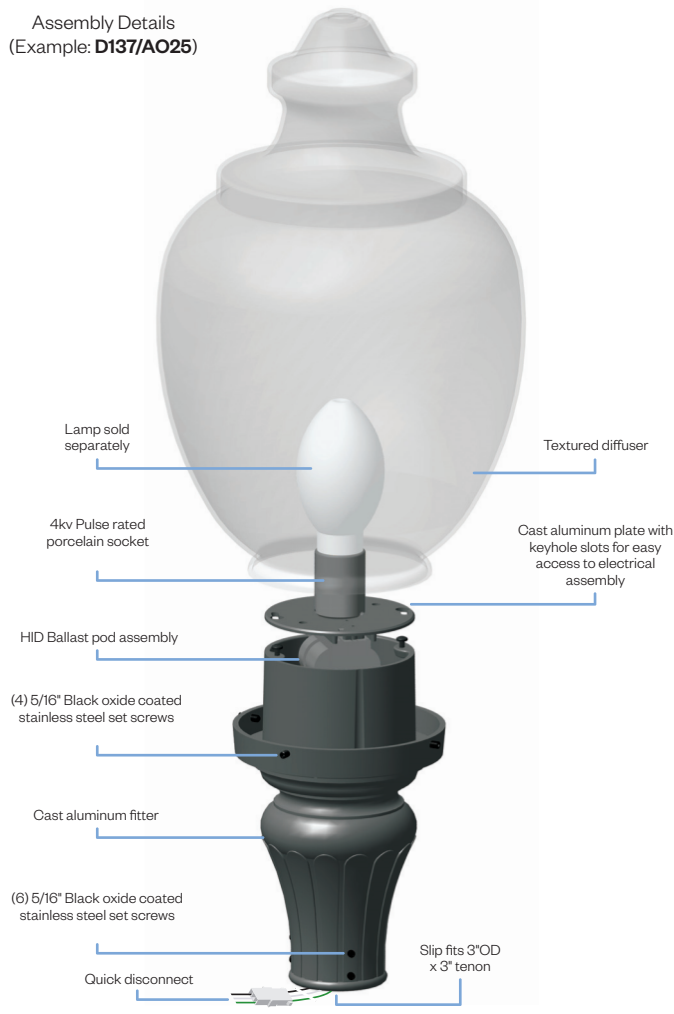
PROJECT:  
  
TYPE:



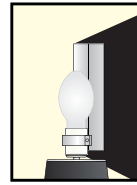
Part String

Example: D131/AO25PC-CL/100MH/120V/BLK

Assembly Details  
(Example: **D137/AO25**)



Options



**HSS**  
House Side Shield for use with Optical Systems

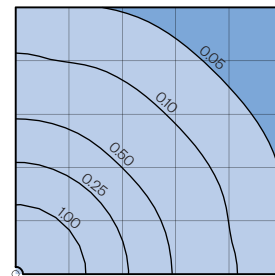


**FDR**  
Faceted Downlight Reflector



**L3 or L5**  
Type III or Type V Glass Refractor

Photometry



Typical HID light source  
14,000 Lumen  
12' Mounting Height  
Grid Spacing is 12'

Socket Types

Wattage	Socket Type
<b>70MH,100MH,150MH</b>	<b>Medium</b>
<b>70HPS,100HPS</b>	<b>Medium</b>
<b>150HPS</b>	<b>Mogul</b>