

AO25 UTILITY SERIES LUMINAIRE

U.6.10.16

AO25
UTILITY

Features

- Easy accessibility
- Interchangeable ballast pods
- Ease of maintenance
- Optional light control

Installation

The luminaire will mount to a 3" OD post or tenon with 5/16" black oxide coated stainless steel square head set screws to ensure a solid connection. The diffuser will be held to the fitter by (4) 5/16 black oxide coated stainless steel captive square head set screws.

Electrical

- High power factor ballast (HPF), core and coil type, pre-wired and tested (NPF available)
- Easy ballast pod access
- 4KV porcelain socket
- ETL label "suitable for wet location"

Accessories:

- Brass band (**BB**)
- Brass band with rosettes (**BB-FW**)
- Cast finial (**CFIN**)
- 90 degree house-side shield (**HSS-90**)
- 180 degree house-side shield (**HSS-180**)
- Twist-lock photocell (**PCL-TW**)
- Solid roof (**SR**)

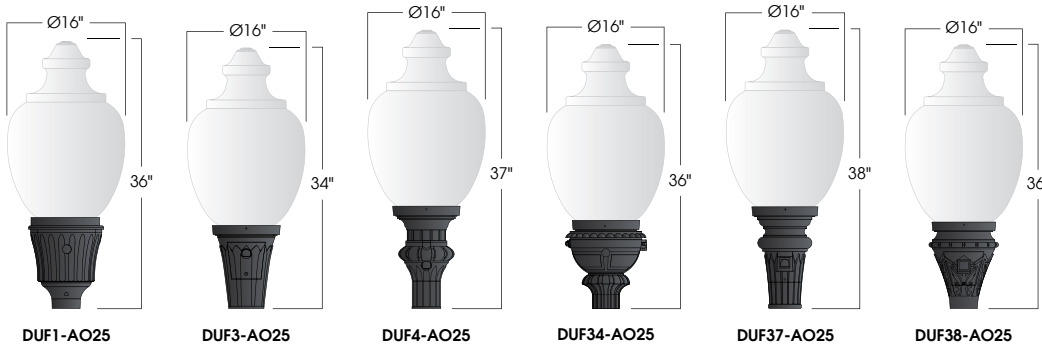
Diffuser Choices

- Clear textured polycarbonate (**PC-CL**)
- White polycarbonate (**PC-WH**)
- Clear acrylic (**DR-CL**)

Finish:

Premium quality thermoset polyester powdercoat for a durable finish in the following:

- BLK** - Satin Black **GTB** - Gloss Textured Black
CLB - Classic Bronze **TBK** - Textured Black
GBZ - Gloss Textured Bronze **TGR** - Gloss Textured Green
GRN - Green



Ordering Information:

Model	Diffuser Material-Color	Optical Option	Light Source	Voltage	Finish	Accessories
DUF1-AO25 DUF3-AO25 DUF4-AO25 DUF34-AO25 DUF37-AO25 DUF38-AO25	PC-CL PC-WH DR-CL	L3 L5 LVR FDR	50,70MH 100,150MH 175,250MH-PS 50,70HPS 100,150HPS 250HPS CFL13,26,32,42	120v 208v 240v 277v	BLK CLB GBZ GRN GTB TBK TGR Custom	BB BB-FW CFIN HSS-90 HSS-180 PCL-TW SR

See next page for more complete ordering options

PROJECT: _____

TYPE: _____

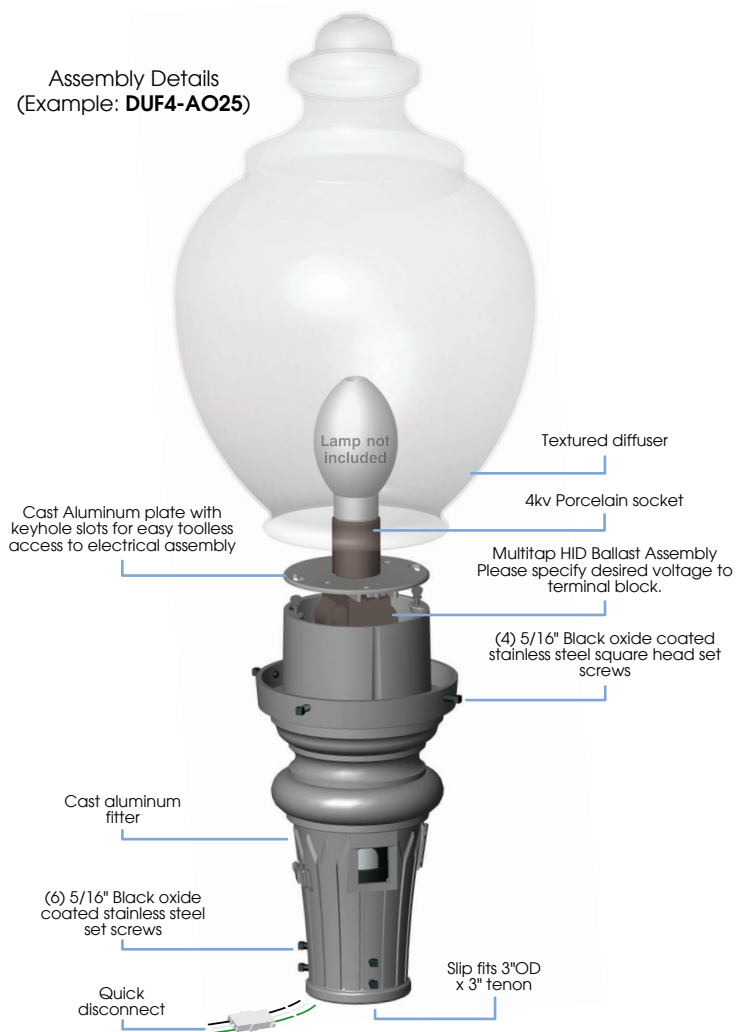


Part String

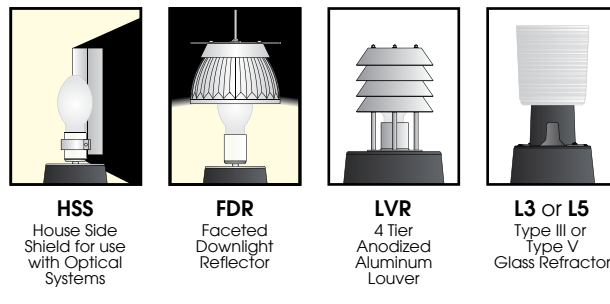
Example: DUF1-AO25/PC-CL/100MH/120v/BLK



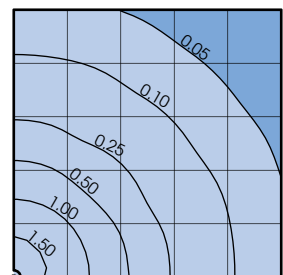
Assembly Details
(Example: DUF4-AO25)



Options



Photometry



AO25 Assembly
175MH lamp
14,000 Lumen
12' Mounting Height
Grid Spacing is 12'

Socket Types

Wattage	Socket Type
50MH, 70MH, 100MH, 150MH	Medium
175MH-PS, 250MH-PS	Mogul
50HPS, 70HPS, 100HPS	Medium
150HPS, 250HPS	Mogul
CFL13, 26, 32, or 42	4-pin

Accessories

