

AO25 SERIES LED UTILITY LUMINAIRE

U.5.10.16

AO25
UTILITY

LED Luminaire:

Multiple LED systems available with convection cooled driver, options for intensity, distribution and color. They operate with over voltage and short circuit protection and automatic voltage sensing for 120 to 277v input. (See next page for LED availability)

- 50,000+ hours of operational life
- Warm 3000K, neutral 4000K, or cool white 5000K color
- Dimmable (controller by others)

ETL listed, suitable for wet locations.

Installation:

The luminaire will mount to a 3" OD post or tenon with 5/16" black oxide coated stainless steel set screws to ensure a solid connection. The diffuser will be held to the fitter by (4) 1/4-20" black oxide coated stainless steel captive set screws.

Diffuser Choices:

- Clear Textured Polycarbonate (**PC-CL**)
- White Textured Polycarbonate (**PC-WH**)
- Clear Textured DR Acrylic (**DR-CL**)

Accessories:

- Brass Band (**BB**)
- Brass Band with rosettes (**BB-FW**)
- Cast Finial (**CFIN**)
- Twistlock Photocell (**TW-PCL**)

Finish:

Premium quality thermoset polyester powdercoat for a durable finish in the following:

BLK - Satin Black

CLB - Classic Bronze

GBZ - Gloss Textured Bronze

GRN - Green

GTB - Gloss Textured Black

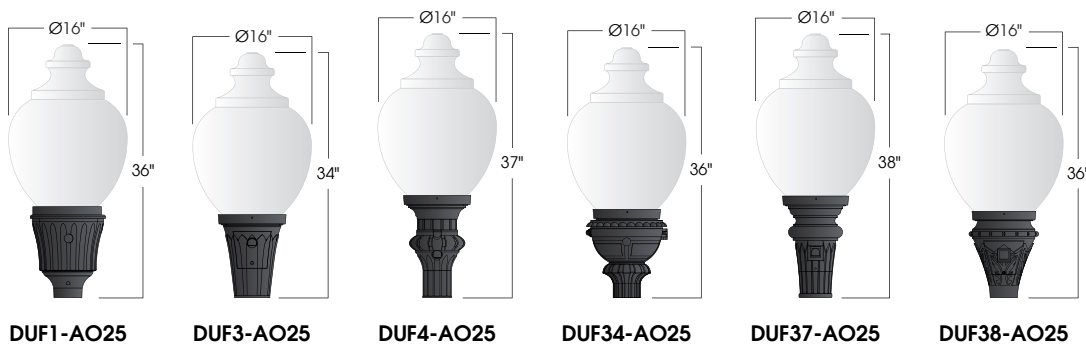
TBK - Textured Black

TGR - Gloss Textured Green



PROJECT:

TYPE:



Ordering Information:

Model	Diffuser Material-Color	LED System	Light Distribution	Order Code	Dimming Option	Finish	Accessories
DUF1-AO25	PC-CL PC-WH DR-CL	AVI VLE	AS SY	3H	DM (0-10 volt)	BLK	BB BB-FW CFIN TW-PCL SR
DUF3-AO25				4H		CLB	
DUF4-AO25				5H		GBZ	
DUF34-AO25				3L		GRN	
DUF37-AO25				4L		GTB	
DUF38-AO25				5L		TBK	
						TGR	
						Custom	

See next page for more complete ordering options



Electrostatic sensitive device.
observe precautions for handling

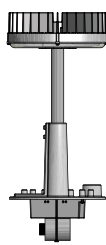
5 year limited
warranty
AMERLUX LED



Part String


Example: D131-AO25PC-CL/100MH/120v/BLK

LED Options (bold indicates ordering code)



LED System	Light Distribution	Code	CCT	CRI	Light Engine Lumens	Nominal Input Power	Dimmable
AVI	SY (Symmetric)	3H	3,000K	80	4,450 lm	60W	DM (0-10V)
		4H	4,000K	80	5,100 lm		
		5H	5,000K	70	5,870 lm		
	AS (Asymmetric)	3H	3,000K	80	4,410 lm		
		4H	4,000K	80	5,050 lm		
		5H	5,000K	70	5,810 lm		
	SY	3L	3,000K	80	2,940 lm	41W	
		4L	4,000K	80	3,460 lm		
		5L	5,000K	70	4,070 lm		
	AS	3L	3,000K	80	2,910 lm		
		4L	4,000K	80	3,420 lm		
		5L	5,000K	70	4,030 lm		

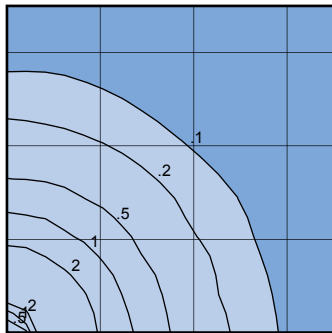
Example: **DUF1-AO25/PC-CL/AVI-SY-3H/BLK**



LED System	Light Distribution	Order Code	CCT	CRI	Light Engine Lumens	Nominal Input Power	Dimmable
VLE	SY (Symmetric)	3H	3,000K	80	5,600 lm	80W	DM (0-10V)
		4H	4,000K	80	5,700 lm		
		5H	5,000K	70	6,000 lm		
	AS (Asymmetric)	3H	3,000K	80	4,200 lm	60W	
		4H	4,000K	80	4,300 lm		
		5H	5,000K	70	4,500 lm		
	SY	3L	3,000K	80	3,000 lm	40W	
		4L	4,000K	80	3,300 lm		
		5L	5,000K	70	3,600 lm		
	AS	3L	3,000K	80	2,200 lm	30W	
		4L	4,000K	80	2,500 lm		
		5L	5,000K	70	2,800 lm		

Example: **DUF1-AO25/PC-WH/VLE-SY-3H/BLK**

Photometry



AO25/PC-CL/LSK-SY-3H
 Luminaire Lumens = 3,469
 Scale: 1 Unit = 12 Ft.
 Mounting Height = 12.00 Ft.