

AO28 SERIES UTILITY LUMINAIRE

U.10.17.18

AO28
HID UTILITY

DESCRIPTION:

The DU730AO Series is a high performance utility luminaire designed around an efficient Type III (T3) or Type V (T5) refractive lens. The spun aluminum hood minimizes light in the upper hemisphere.

INSTALLATION:

The luminaire will mount to a 3" OD post or tenon with 5/16" black oxide coated stainless steel set screws to ensure a solid connection. The diffuser will be held to the fitter by (4) 5/16" black oxide coated stainless steel captive set screws.

ELECTRICAL:

- High power factor ballast (HPF), core and coil type, pre-wired and tested
- Easy ballast pod access
- 4KV pulse rated porcelain socket
- Suitable for wet location

ETL listed, suitable for wet locations.

DIFFUSER CHOICES:

- Acrylic Type III (**AC-T3**)
- Acrylic Type V (**AC-T5**)
- Polycarbonate Type III (**PC-T3**)
- Polycarbonate Type V (**PC-T5**)

ACCESSORIES:

- Cast finial (**CFIN**)
- 90 degree house-side shield (**HSS-90**)
- 180 degree house-side shield (**HSS-180**)
- Twist-lock photocell (**PCL-TW**)
- Faceted Downlight Reflector (**FDR**)

FINISH:

Durable thermoset polyester powdercoat finish in the following:

- Satin Black (**BLK**)
- Classic Bronze (**CLB**)
- Gloss Textured Bronze (**GBZ**)
- Green (**GRN**)
- Gloss Textured Black (**GTB**)
- Textured Black (**TBK**)
- Gloss Textured Green (**TGR**)



Standard

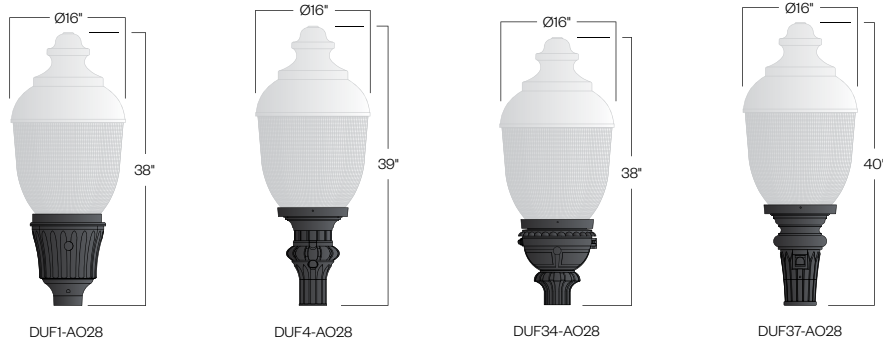


With SLL-FDR (T5 only)



PROJECT:

TYPE:



Ordering Information:

| Model | Lens Material | Light Distribution | Light Source | Voltage | Finish | Accessories |
|--|---------------|--------------------|---|------------------------------|---|--|
| DUF1-AO28 DUF4-AO28 DUF34-AO28 DUF37-AO28 | AC PC | T3 T5 | 70MH 100MH 150MH 70HPS 100HPS 150HPS | 120v 208v 240v 277v | BLK CLB GBZ GRN GTB TBK TGR Custom | CFIN HSS-90 HSS-180 PCL-TW FDR |

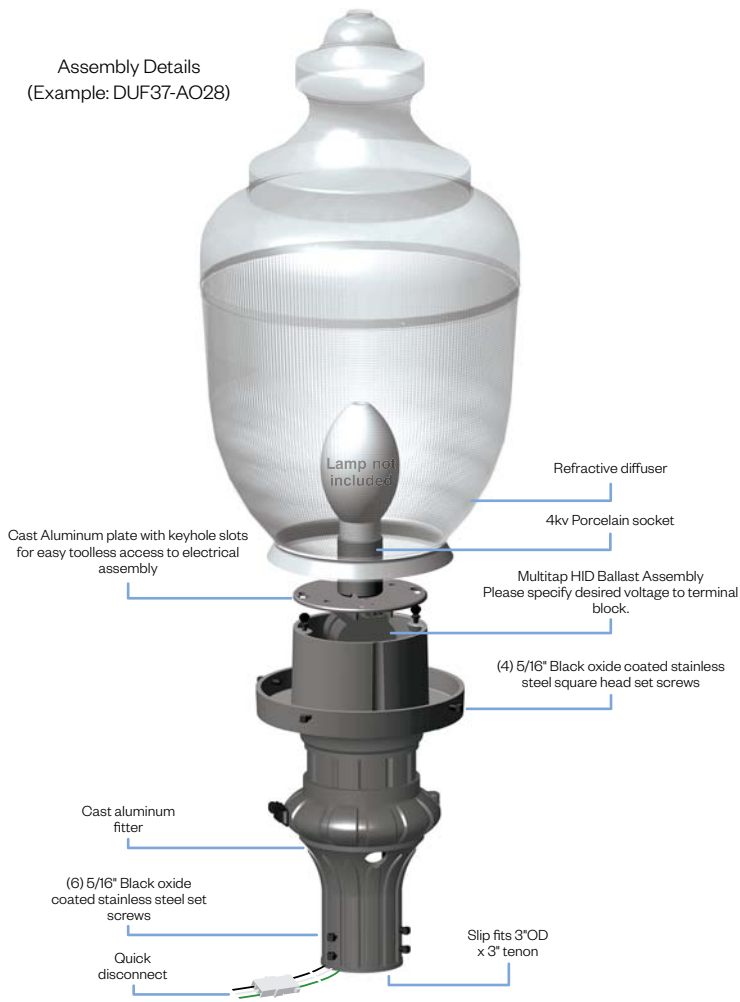
See next page for more complete ordering options



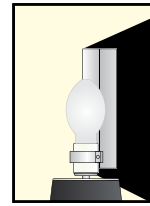
Part String

Example: DUF1-AO28/PC-T5/100MH/120v/BLK

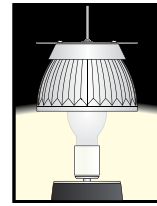
Assembly Details
(Example: DUF37-AO28)



Options



HSS90 & HSS180
House Side Shield
for use with Optical
Systems

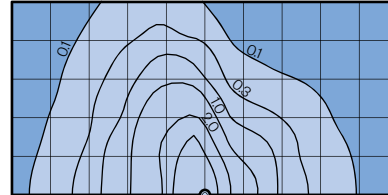


FDR
Faceted
Downlight
Reflector

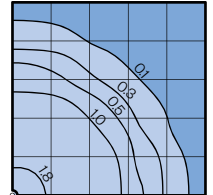
Photometry

AO28 Assembly
175MH lamp
14,000 Lumen
12' Mounting Height
Grid Spacing is 12'

Type III (T3)



Type V (T5)



Socket Types

| Wattage | Socket Type |
|-------------------------|-------------|
| 70MH,100MH,150MH | Medium |
| 70HPS,100HPS | Medium |
| 150HPS | Mogul |