

# AO28 SERIES LUMINAIRE

U.11.15.18

AO28  
HID

## DESCRIPTION:

Lighting for exterior retail, commercial and hospitality environments. The AO28 Series consists of an efficient Type III (T3) or Type V (T5) refractive acorn combined with one of several styles of cast aluminum fitters.

## INSTALLATION:

The luminaire will mount to a 3" OD post or tenon with 5/16" black oxide coated stainless steel set screws to ensure a solid connection. The diffuser will be held to the fitter by (4) 5/16"-18 black oxide coated stainless steel set screws.

## ELECTRICAL:

- High power factor ballast (HPF), core and coil type, pre-wired and tested
- Easy ballast pod access
- 4KV pulse rated porcelain socket
- Suitable for wet location

**ETL listed, suitable for wet locations.**

## DIFFUSER CHOICES:

- Acrylic Type III (**AC-T3**)
- Acrylic Type V (**AC-T5**)
- Polycarbonate Type III (**PC-T3**)
- Polycarbonate Type V (**PC-T5**)

## FINISH:

Durable thermoset polyester powdercoat finish in the following:

- Satin Black (**BLK**)
- Classic Bronze (**CLB**)
- Gloss Textured Bronze (**GBZ**)
- Green (**GRN**)
- Gloss Textured Black (**GTB**)
- Textured Black (**TBK**)
- Gloss Textured Green (**TGR**)

## ACCESSORIES:

- Cast aluminum Finial (**CFIN**)
- Faceted Downlight Reflector (**FDR**)
- 90 Degree house-side shield (**HSS-90**)
- 180 Degree house-side shield (**HSS-180**)
- Dusk-to-dawn Photocell (**PCL**)

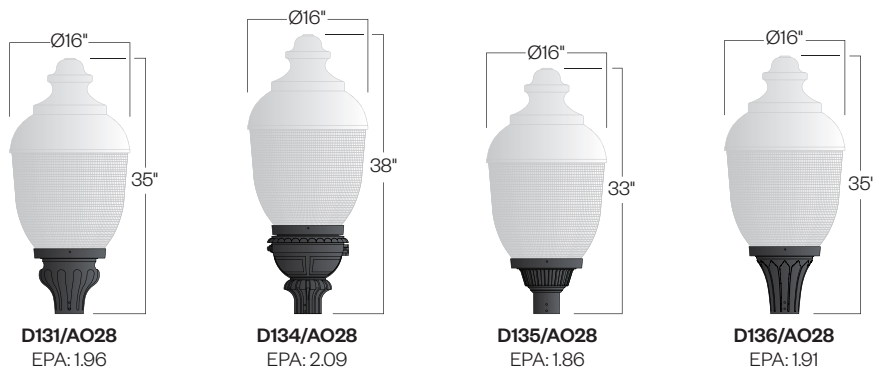


PROJECT:

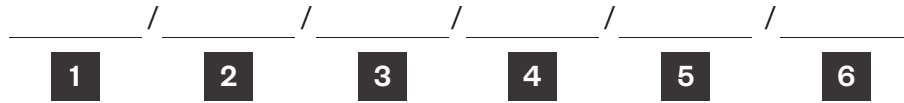
LOCATION:

FIXTURE TYPE:

NOTES:



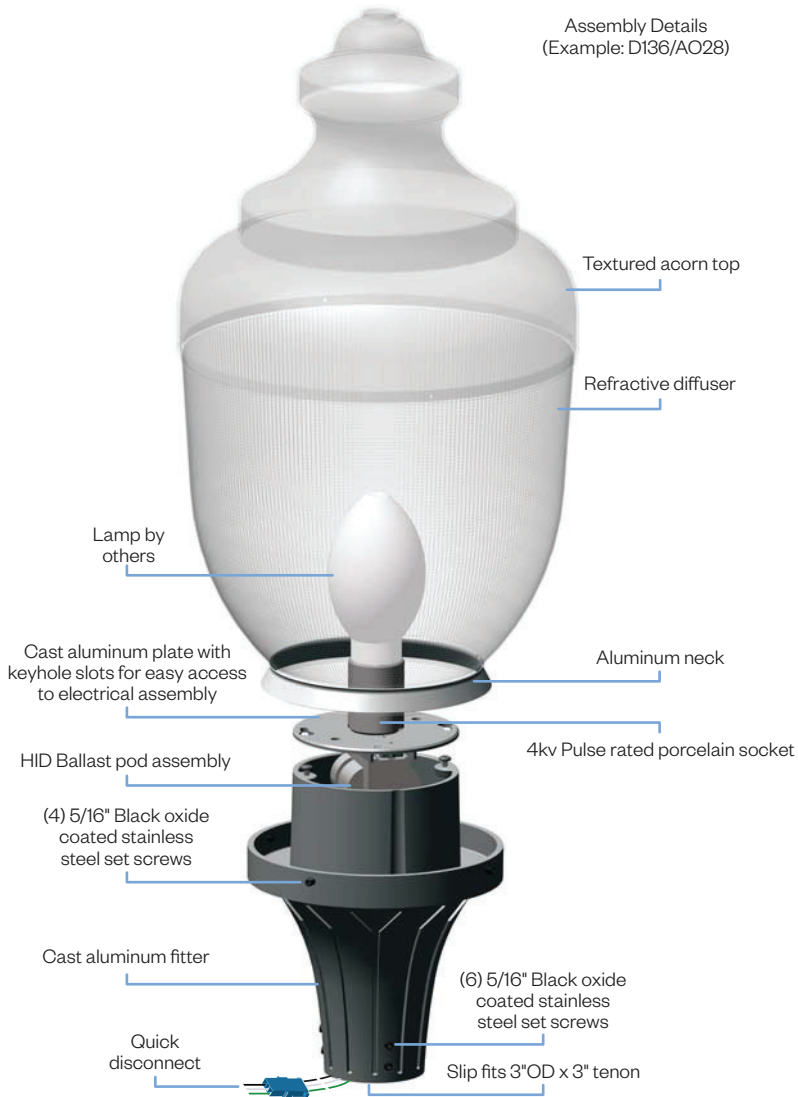
## Ordering Information



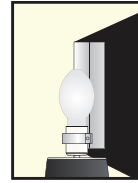
Add additional accessories as needed.

- |   |   |
|---|---|
| <p><b>1</b> <u>Model</u><br/> <b>D131/AO28</b><br/> <b>D134/AO28</b><br/> <b>D135/AO28</b><br/> <b>D136/AO28</b></p> <p><b>2</b> <u>Diffuser Choices</u><br/> <b>AC-T3</b>- Acrylic Type 3<br/> <b>AC-T5</b>- Acrylic Type 5<br/> <b>PC-T3</b>- Polycarbonate Type 3<br/> <b>PC-T5</b>- Polycarbonate Type 5</p> <p><b>3</b> <u>Light Source</u><br/> <b>70MH</b> - 70w Metal Halide<br/> <b>100MH</b> - 100w Metal Halide<br/> <b>150MH</b> - 150w Metal Halide<br/> <b>70HPS</b> - 70w High Pressure Sodium<br/> <b>100HPS</b> - 100w High Pressure Sodium<br/> <b>150HPS</b> - 150w High Pressure Sodium<br/> <b>MDO</b> - Medium Socket Only<br/> <b>MGO</b> - Mogul Socket Only</p> <p><b>4</b> <u>Voltage</u><br/> <b>120V</b><br/> <b>208V</b><br/> <b>240V</b><br/> <b>277V</b></p> | <p><b>5</b> <u>Finish</u><br/> <b>BLK</b> - Satin Black<br/> <b>CLB</b> - Classic Bronze<br/> <b>GBZ</b> - Gloss Textured Bronze<br/> <b>GRN</b> - Green<br/> <b>GTB</b> - Gloss Textured Black<br/> <b>TBK</b> - Textured Black<br/> <b>TGR</b> - Gloss Textured Green<br/> <b>CSTM</b> - Custom</p> <p><b>6</b> <u>Accessories</u><br/> <b>CFIN</b> - Cast Aluminum Finial<br/> <b>HSS-90</b> - 90° House Side Shield<br/> <b>HSS-180</b> - 180° House Side Shield<br/> <b>PCL</b> - Dusk-to-dawn button type photocell</p> |
|---|---|

Assembly Details  
(Example: D136/AO28)



Options



**HSS90 & HSS180**  
House Side Shield  
for use with  
Optical Systems

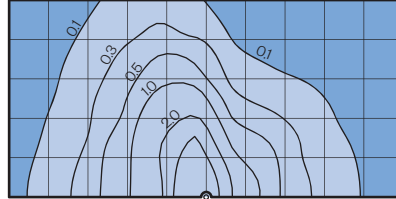


**FDR**  
Faceted  
Downlight  
Reflector

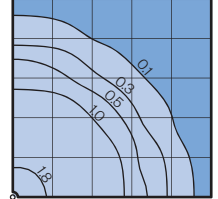
Photometry

Typical HID light source  
14,000 Lumen  
12' Mounting Height  
Grid Spacing is 12'

Type III (T3)



Type V (T5)



Socket Types

Wattage	Socket Type
<b>70MH,100MH,150MH</b>	Medium
<b>70HPS,100HPS</b>	Medium
<b>150HPS</b>	Mogul