

AP24 SERIES LUMINAIRE

U.10.17.18

DESCRIPTION:

Lighting for exterior retail, commercial and hospitality environments. The AP24 Series consists of a decorative acorn combined with one of several styles of cast aluminum fitters.

ELECTRICAL:

- High power factor ballast (HPF), core and coil type, pre-wired and tested
- Easy ballast pod access
- 4KV pulse rated porcelain socket
- Suitable for wet location

ETL listed, suitable for wet locations.

INSTALLATION:

The luminaire will mount to a 3" OD post or tenon with 5/16" black oxide coated stainless steel set screws to ensure a solid connection. The diffuser will be held to the fitter by (4) 1/4-20" black oxide coated stainless steel captive set screws.

DIFFUSER CHOICES:

- Clear Textured Polycarbonate (**PC-CL**)
- White Textured Polycarbonate (**PC-WH**)
- Clear Textured DR Acrylic (**DR-CL**)

ACCESSORIES:

- Cast aluminum Finial (**CFIN**)
- 90 Degree house-side shield (**HSS-90**)
- 180 Degree house-side shield (**HSS-180**)
- Dusk-to-dawn Photocell (**PCL**)

FINISH:

Durable thermoset polyester powdercoat finish in the following:

- Satin Black (**BLK**)
- Classic Bronze (**CLB**)
- Gloss Textured Bronze (**GBZ**)
- Green (**GRN**)
- Gloss Textured Black (**GTB**)
- Textured Black (**TBK**)
- Gloss Textured Green (**TGR**)

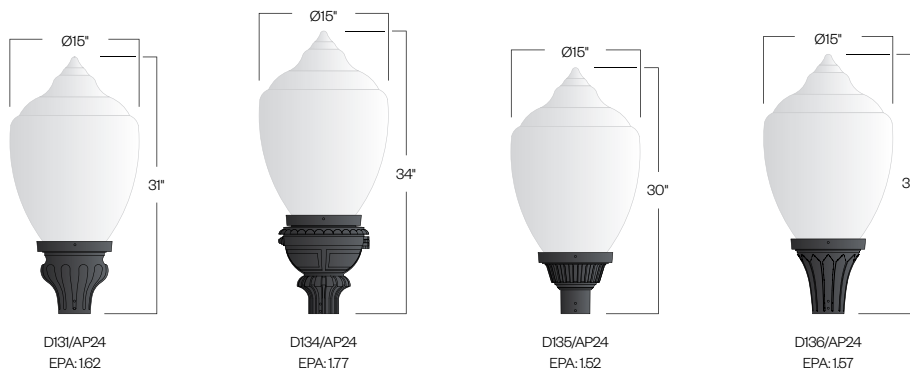


AP24
HID



PROJECT:

TYPE:



Ordering Information:

Model	Diffuser Material-Color	Optical Option	Light Source	Voltage	Finish	Accessory
D131/AP24 D134/AP24 D135/AP24 D136/AP24 D138/AP24	PC-CL PC-WH DR-CL	L3 L5 FDR	70MH 100MH 150MH 70HPS 100HPS 150HPS	120v 208v 240v 277v	BLK CLB GBZ GRN GTB TBK TGR Custom	CFIN HSS-90 HSS-180 PCL

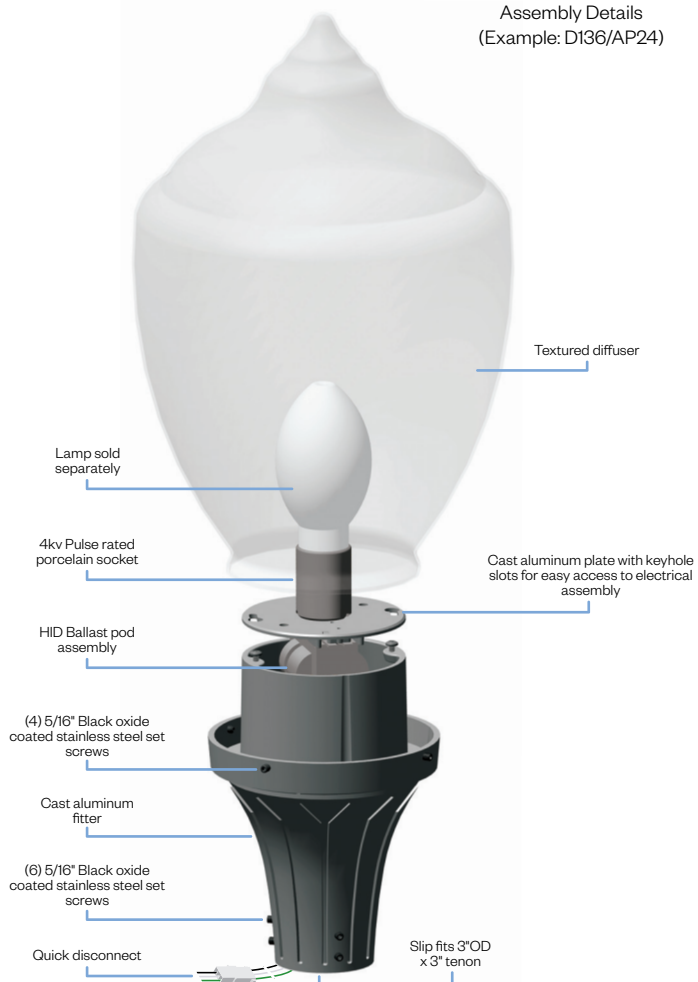
See next page for more complete ordering options



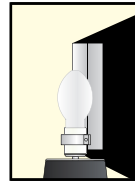
Part String

Example: D131/AP24PC-CL/70MH/120v/BLK

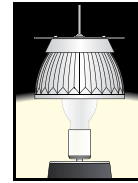
Assembly Details
(Example: D136/AP24)



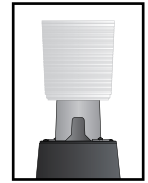
Options



HSS
House Side Shield for use with Optical Systems

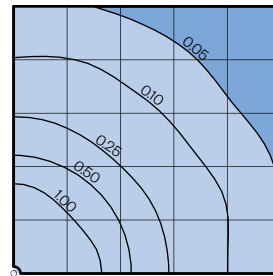


FDR
Faceted Downlight Reflector



L3 or L5
Type III or Type V Glass Refractor

Photometry



AP24 Assembly
Typical HID light source
14,000 Lumen
12' Mounting Height
Grid Spacing is 12'

Socket Types

Wattage	Socket Type
70MH, 100MH, 150MH	Medium
70HPS, 100HPS	Medium
150HPS	Mogul