

# AR18GL SERIES UTILITY LUMINAIRE

U.10.17.18

AR18GL  
HID UTILITY

## DESCRIPTION:

Lighting for exterior retail, commercial and hospitality environments. The AR18GL Series consists of a Type III(T3) or Type V(T5) refractive borosilicate glass acorn combined with one of several styles of cast aluminum fitters.

## INSTALLATION:

The luminaire will mount to a 3" OD post or tenon with 5/16" black oxide coated stainless steel set screws to ensure a solid connection. The diffuser will be held to the fitter by (4) 1/4-20" black oxide coated stainless steel captive set screws.

## ELECTRICAL:

- High power factor ballast (HPF), core and coil type, pre-wired and tested
- Easy ballast pod access
- 4KV pulse rated porcelain socket
- Suitable for wet location

ETL listed, suitable for wet locations.

## DIFFUSER:

- The fixture will have a high performance borosilicate glass refractive acorn.
- Specify Type III (T3) or Type V (T5) distribution.

## FINISH:

Durable thermoset polyester powdercoat finish in the following:

- Satin Black (BLK)
- Classic Bronze (CLB)
- Gloss Textured Bronze (GBZ)
- Green (GRN)
- Gloss Textured Black (GTB)
- Textured Black (TBK)
- Gloss Textured Green (TGR)

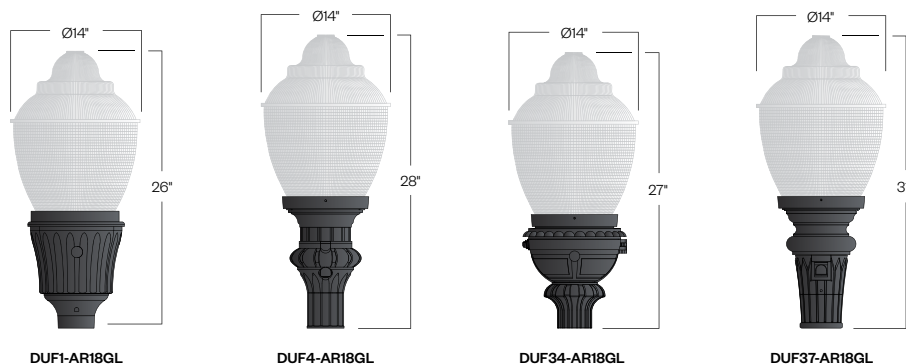
## ACCESSORIES:

- Cast finial (CFIN)
- 90 degree house-side shield (HSS-90)
- 180 degree house-side shield (HSS-180)
- Twist-lock photocell (PCL-TW)
- Solid roof (SR)



PROJECT:

TYPE:



Ordering Information:

Model	Light Distribution	Light Source	Voltage	Finish	Accessories
DUF1-AR18GL DUF4-AR18GL DUF34-AR18GL DUF37-AR18GL	T3 T5	70MH 100MH 150MH 70HPS 100HPS 150HPS	120v 208v 240v 277v	BLK CLB GBZ GRN GTB TBK TGR Custom	CFIN FDR HSS-90 HSS-180 PCL-TW SR

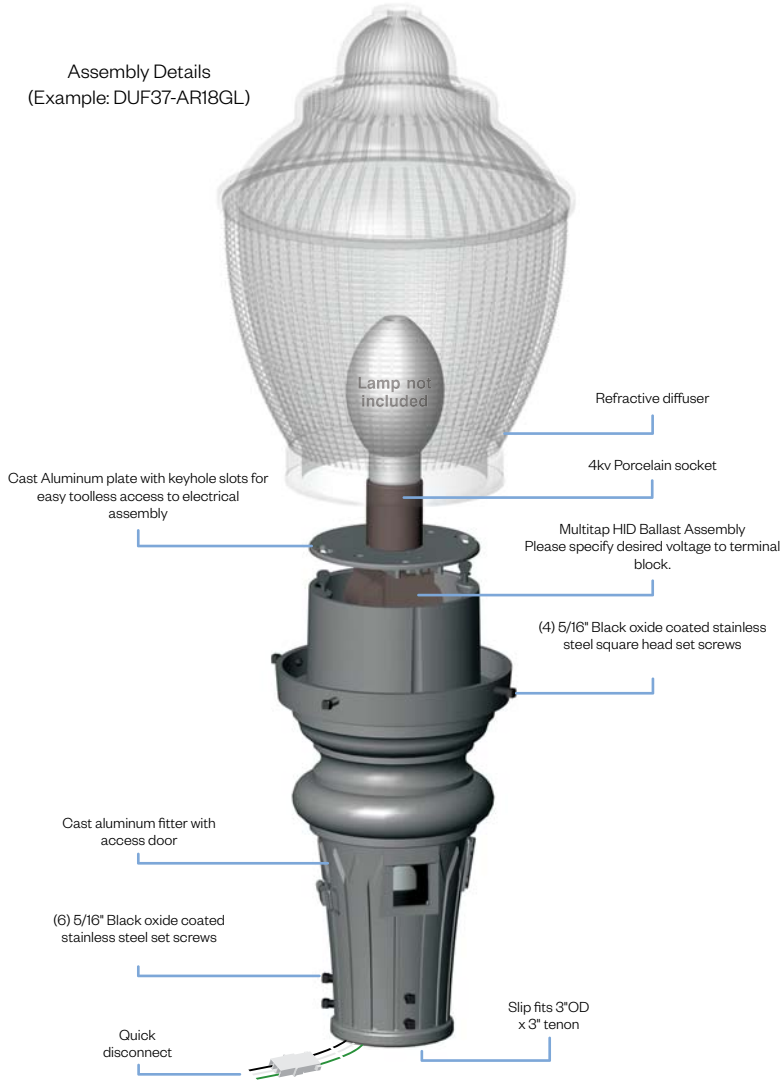
See next page for more complete ordering options



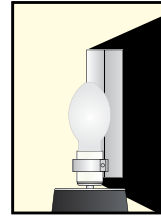
Part String

Example: DUF1-AR18GL-T5/100MH/120v/BLK

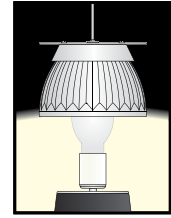
Assembly Details  
(Example: DUF37-AR18GL)



Options



**HSS90 & HSS180**  
House Side Shield  
for use with Optical  
Systems

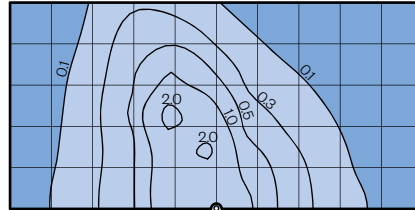


**FDR**  
Façeted  
Downlight  
Reflector

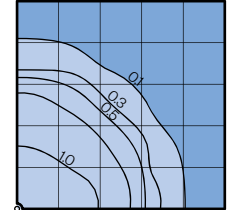
Photometry

AR18GL  
Typical HID light source  
14,000 Lumen  
12' Mounting Height  
Grid Spacing is 12'

Type III (T3)



Type V (T5)



Socket Types

Wattage	Socket Type
<b>70MH,100MH,150MH</b>	Medium
<b>70HPS,100HPS</b>	Medium
<b>150HPS</b>	Mogul

Accessories

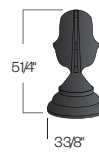


Shown with decorative ring and finial  
**(D138/AR18GL/R/FIN-08)**



Shown with solid roof and finial  
**D138/AR18GL/SR/CFIN**

Finial Styles



**OFIN**  
(Cast aluminum)



**FIN-08**  
Cast aluminum finial



**FIN-760**  
Cast aluminum finial