

AR20 SERIES LUMINAIRE

U.7.8.16

Description

Lighting for exterior retail, commercial and hospitality environments. The AR20 Series consists of a decorative acorn combined with one of several styles of cast aluminum fitters.

Electrical

- High power factor ballast (HPF), core and coil type, pre-wired and tested
- Easy ballast pod access
- 4KV pulse rated porcelain socket
- Suitable for wet location

ETL listed, suitable for wet locations.

Installation

The luminaire will mount to a 3" OD post or tenon with 5/16" black oxide coated stainless steel set screws to ensure a solid connection. The diffuser will be held to the fitter by (4) 1/4-20" black oxide coated stainless steel captive set screws.

Diffuser choices

- Clear Textured Polycarbonate (**PC-CL**)
- White Textured Polycarbonate (**PC-WH**)
- Clear Textured DR Acrylic (**DR-CL**)

Finish

Premium quality thermoset polyester powdercoat for a durable finish in the following:

- BLK** - Satin Black
- CLB** - Classic Bronze
- GBZ** - Gloss Textured Bronze
- GRN** - Green
- GTB** - Gloss Textured Black
- TBK** - Textured Black
- TGR** - Gloss Textured Green

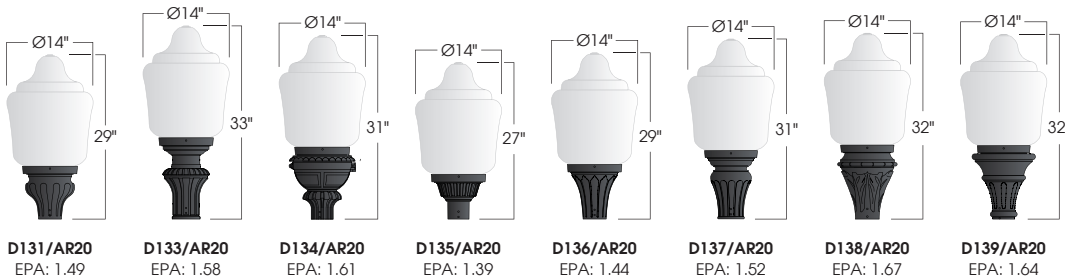


AR20
HID



PROJECT:

TYPE:



Ordering Information:

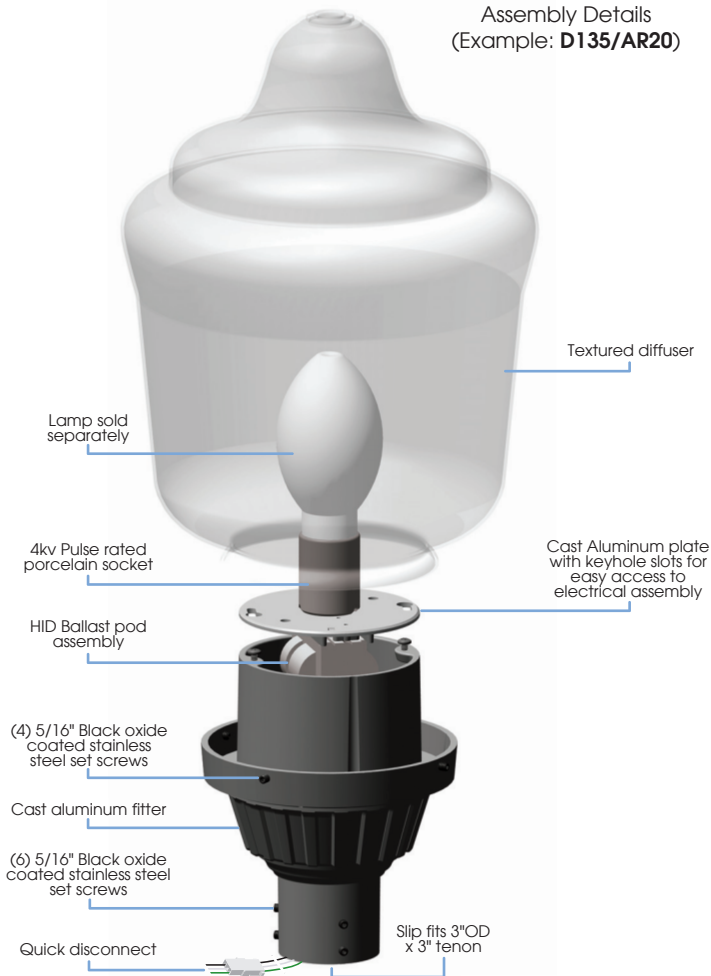
Model	Diffuser Material-Color	Optical Option	Light Source	Voltage	Finish	Accessory
D131/AR20 D133/AR20 D134/AR20 D135/AR20 D136/AR20 D137/AR20 D138/AR20 D139/AR20	PC-CL PC-WH DR-CL	FDR L3 L5 LVR	50MH,70MH 100MH,150MH 175MH-PS 250MH-PS 50HPS,70HPS 100HPS,150HPS 175HPS,250HPS	120v 208v 240v 277v	BLK CLB GBZ GRN GTB TBK TGR Custom	CFIN HSS-90 HSS-180 PCL

See next page for more complete ordering options

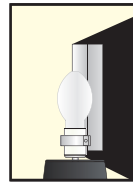
Part String

Example: D131/AR20PC-CL/50MH/120v/BLK

Assembly Details
(Example: D135/AR20)



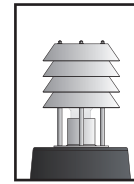
Options



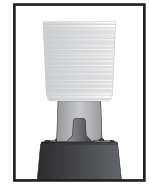
HSS
House Side Shield for use with Optical Systems



FDR
Faceted Downlight Reflector

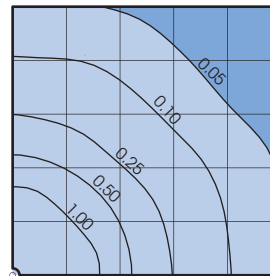


LVR
4 Tier Anodized Aluminum Louver



L3 or L5
Type III or Type V Glass Refractor

Photometry



Typical HID light source
14,000 Lumen
12' Mounting Height
Grid Spacing is 12'

Socket Types

Wattage	Socket Type
50MH, 70MH, 100MH, 150MH	Medium
175MH-PS, 250MH-PS	Mogul
50HPS, 70HPS, 100HPS	Medium
150HPS, 250HPS	Mogul