

CG SERIES LUMINAIRE

U.10.17.18

DESCRIPTION:

Lighting for exterior retail, commercial and hospitality environments. The CG Series consists of a decorative caged acorn and finial combined with one of several styles of cast aluminum fitters.

ELECTRICAL:

- High power factor ballast (HPF), core and coil type, pre-wired and tested
- Easy ballast pod access
- 4KV pulse rated porcelain socket
- Suitable for wet location

ETL listed, suitable for wet locations.

INSTALLATION:

The luminaire will mount to a 3" OD post or tenon with 5/16" black oxide coated stainless steel set screws to ensure a solid connection. The diffuser will be held to the fitter by (4) 1/4-20" black oxide coated stainless steel captive set screws.

DIFFUSER CHOICES:

- Clear Textured Polycarbonate (**PC-CL**)
- White Textured Polycarbonate (**PC-WH**)
- Clear Textured DR Acrylic (**DR-CL**)

ACCESSORIES:

- Faceted Downlight Reflector (**FDR**)
- 90 Degree house-side shield (**HSS-90**)
- 180 Degree house-side shield (**HSS-180**)
- Dusk-to-dawn Photocell (**PCL**)

FINISH:

Durable thermoset polyester powdercoat finish in the following:

- Satin Black (**BLK**)
- Classic Bronze (**CLB**)
- Gloss Textured Bronze (**GBZ**)
- Green (**GRN**)
- Gloss Textured Black (**GTB**)
- Textured Black (**TBK**)
- Gloss Textured Green (**TGR**)

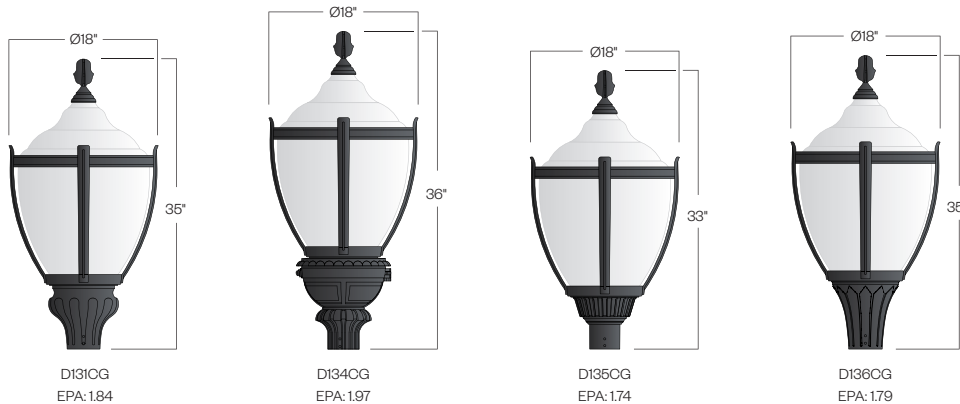


CG Series
HID



PROJECT:

TYPE:



Ordering Information:

Model	Diffuser Material-Color	Optical Option	Light Source	Voltage	Finish	Accessory
D131CG D134CG D135CG D136CG	PC-CL PC-WH DR-CL	L3 L5 FDR	70MH 100MH 150MH 70HPS 100HPS 150HPS	120v 208v 240v 277v	BLK CLB GBZ GRN GTB TBK TGR Custom	HSS-90 HSS-180 PCL

See next page for more complete ordering options

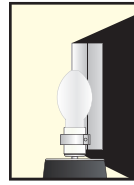


Part String

Example: D131CG/PC-CL/100MH/120v/BLK



Options



HSS
House Side Shield for use with Optical Systems

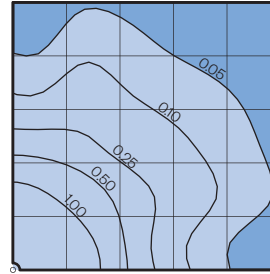


FDR
Faceted Downlight Reflector



L3 or L5
Type III or Type V Glass Refractor

Photometry



Typical HID light source
14,000 Lumen
12' Mounting Height
Grid Spacing is 12'

Socket Types

Wattage	Socket Type
70MH, 100MH, 150MH	Medium
70HPS, 100HPS	Medium
150HPS	Mogul