

# CG SERIES LUMINAIRE

U.4.1.16

CG Series  
HID

## Description

Lighting for exterior retail, commercial and hospitality environments. The CG Series consists of a decorative caged acorn and finial combined with one of several styles of cast aluminum fitters.

## Electrical

- High power factor ballast (HPF), core and coil type, pre-wired and tested
- Easy ballast pod access
- 4KV pulse rated porcelain socket
- Suitable for wet location

**ETL listed, suitable for wet locations.**

## Installation

The luminaire will mount to a 3" OD post or tenon with 5/16" black oxide coated stainless steel set screws to ensure a solid connection. The diffuser will be held to the fitter by (4) 1/4-20" black oxide coated stainless steel captive set screws.

## Diffuser choices

- Clear Textured Polycarbonate (**PC-CL**)
- White Textured Polycarbonate (**PC-WH**)
- Clear Textured DR Acrylic (**DR-CL**)

## Finish

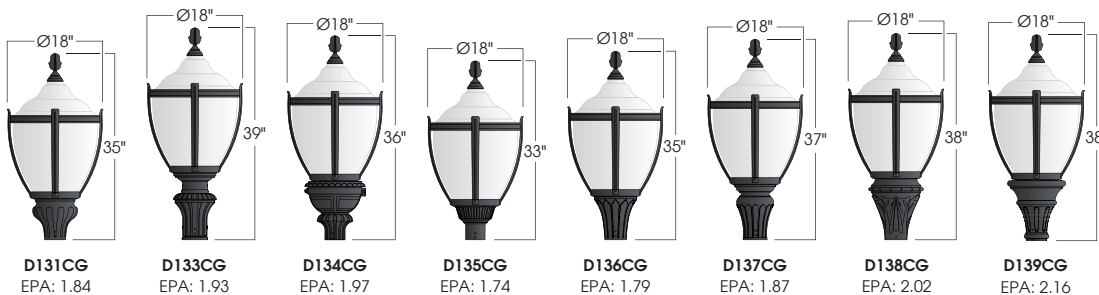
Premium quality thermoset polyester powdercoat for a durable finish in the following:

- BLK** - Satin Black                      **GTB** - Gloss Textured Black  
**CLB** - Classic Bronze                **TBK** - Textured Black  
**GBZ** - Gloss Textured Bronze      **TGR** - Gloss Textured Green  
**GRN** - Green



PROJECT: \_\_\_\_\_

TYPE: \_\_\_\_\_



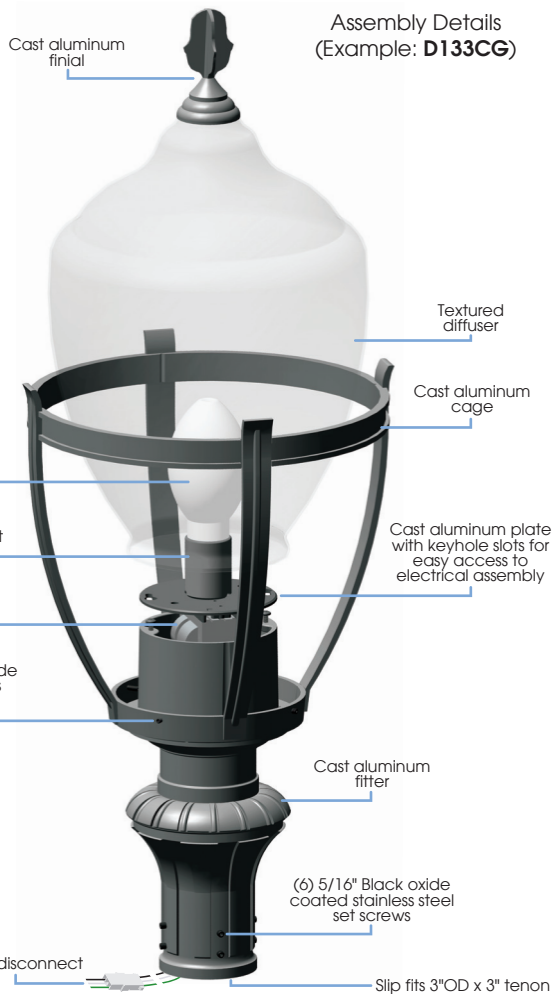
## Ordering Information:

Model	Diffuser Material-Color	Optical Option	Light Source	Voltage	Finish	Accessory
D131CG D133CG D134CG D135CG D136CG D137CG D138CG D139CG	PC-CL PC-WH DR-CL	L3 L5 LVR FDR	50,70MH 100MH 150MH 50,70HPS 100HPS 150HPS	120v 208v 240v 277v	BLK CLB GBZ GRN GTB TBK TGR Custom	HSS-90 HSS-180 PCL

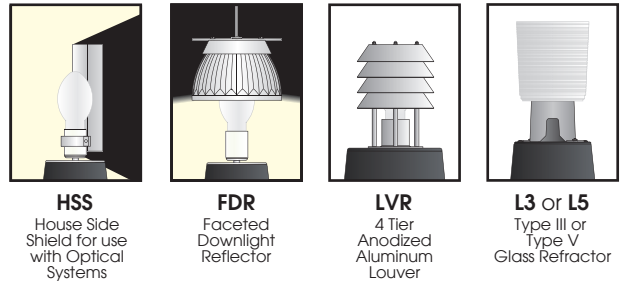
See next page for more complete ordering options

Part String

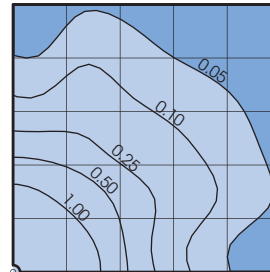
Example: D131CG/PC-CL/100MH/120v/BLK



**Options**



**Photometry**



Typical HID light source  
14,000 Lumen  
12' Mounting Height  
Grid Spacing is 12'

**Socket Types**

Wattage	Socket Type
50MH, 70MH, 100MH, 150MH	Medium
175MH-PS, 250MH-PS	Mogul
50HPS, 70HPS, 100HPS	Medium
150HPS, 250HPS	Mogul