

# D142 SERIES LUMINAIRE

U.3.10.16

## Description

The contemporary styled D142 Series combines a cast aluminum housing, a spun aluminum shade and prismatic conical acrylic lens to create an efficient luminaire with symmetrical light distribution.

## HID Electrical

- High power factor ballast (HPF), core and coil type, pre-wired and tested
- Easy ballast pod access
- 4KV porcelain socket
- Suitable for wet location

**ETL listed, suitable for wet locations.**

## Installation

The luminaire and crook will mount to a 4" OD post or tenon with 5/16" black oxide coated stainless steel set screws to ensure a solid connection.

## Light Distribution

- Symetric prismatic conical acrylic (PA)
- Specify Type III (HR3) or Type V (HR5) light distribution (HR-GL only)

## Optical Systems

**PA** (Standard for FS22 and RFS22 only) -A prismatic conical acrylic lens is combined with a highly reflective white powder coat finish on the underside of the spun shade for symmetrical distribution.

**HR3-GL** -Type III segmented reflector with a clear glass lens.

**HR5-GL** -Type V segmented reflector with a clear glass lens.

**HR3-GL-SAG** -Type III segmented reflector with a clear sag glass lens.

**HR5-GL-SAG** -Type V segmented reflector with a clear sag glass lens.

## Finish

Premium quality thermoset polyester powdercoat for a durable finish in the following:

**BLK** - Satin Black

**CLB** - Classic Bronze

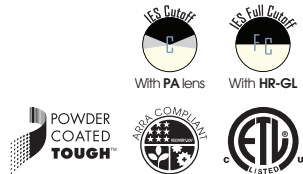
**GBZ** - Gloss Textured Bronze

**GRN** - Green

**GTB** - Gloss Textured Black

**TBK** - Textured Black

**TGR** - Gloss Textured Green



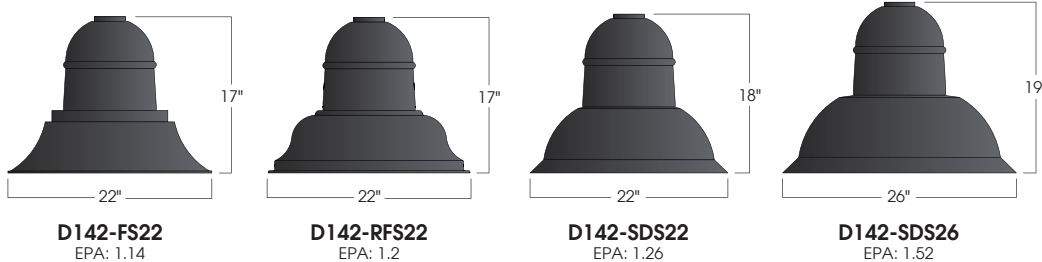
D142 SERIES  
HID



Shown with  
D142-RFS22/PA

PROJECT:

TYPE:



## Ordering Information

Model	Shade Style	Optical System and Lens	Light Source	Voltage	Finish	Accessory
D142	FS22 RFS22	HR3-GL HR5-GL HR3-GL-SAG HR5-GL-SAG PA (std)	100MH 150MH 175MH-PS 250MH-PS	120v 208v 240v 277v	BLK CLB GBZ GRN GTB TBK TGR Custom	HSS PCL
	SDS22	HR3-GL HR5-GL HR3-GL-SAG HR5-GL-SAG	100HPS 150HPS 250HPS			
	SDS26	HR3-GL HR5-GL				

Additional light sources, voltages, and custom colors are available. Contact factory for details.

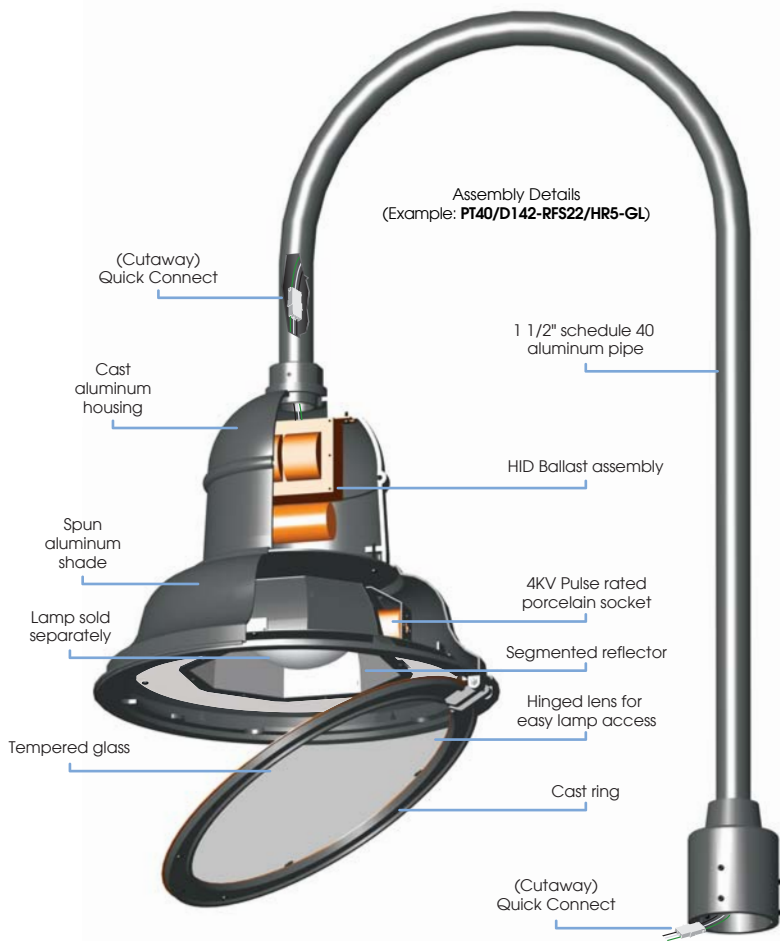
Part String

Example: D142-FS22/PA/100MH/208v/BLK

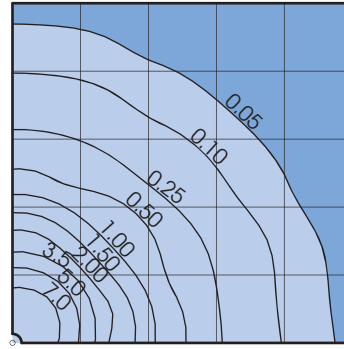
800.364.0098 • Fax: 281.997.5441 • www.amerlux.com

Amerlux reserves the right to change details that do not affect overall function and performance.





**Standard Photometry**



**D142-RFS22/HR5**  
 Typical HID light source  
 14,000 Lumen  
 12' Mounting Height  
 Grid Spacing is 12'

**Socket Types**

Wattage	Socket Size
50MH, 70MH, 100MH, 150MH	Medium
175MH-PS, 250MH-PS	Mogul
50HPS, 70HPS, 100HPS	Medium
150HPS, 250HPS	Mogul

**Mounting Options (Slip fits 4"OD tenon)**

