

# DB6 SERIES

U.5.10.16

## Materials

The bollard is extruded aluminum with a .125 wall thickness. All hardware is stainless steel, and exterior hardware is tamper resistant.

## Electrical

The easily accessible ballast is a High Power Factor (HPF), core and coil type, pre-wired and tested. The glazed white porcelain socket will be medium or base, 4KV pulse rated with a copper alloy nickel plated screw shell and center contact. All components are UL recognized and will be an integral part of the bollard. The luminaire will carry an ETL label "Suitable for wet location."

## Installation

The one piece construction of the DB6 Series includes an anchor plate which mounts with (4) 3/8" x 12" galvanized steel anchor bolts. Conduit may enter at the center of the anchor plate prior to the installation of the base cover. The bollard casing is removable for relamping.

## Finish

Premium quality thermoset polyester powdercoat for a durable finish in the following:

**BLK** - Satin Black

**CLB** - Classic Bronze

**GBZ** - Gloss Textured Bronze

**GRN** - Green

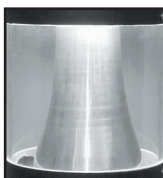
**GTB** - Gloss Textured Black

**TBK** - Textured Black

**TGR** - Gloss Textured Green



## Light Control Options



### Indirect (Standard)

This is the standard optical system (unless otherwise specified). The light source will be hidden in the top portion of the bollard and the light will be emitted off of the conical aluminum reflector visible through the clear lens.



### Louvered (LVR)

A five tiered louver directs the light downward and shields lamp form direct view.



### Refractor (S5)

A borosilicate glass refractor delivers IES Type V distribution and allows the light to project farther than the other two systems.

## Ordering Information:

| Model            | Optical Option | Light Source                                   | Voltage                      | Finish                               |
|------------------|----------------|--|------------------------------|--------------------------------------|
| DB6RRT<br>DB6RFT | S5<br>LVR      | 50,70MH<br>35,50HPS<br>70HPS<br>CFL13,26,32,42 | 120v<br>208v<br>240v<br>277v | BLK,CLB<br>GBZ,GRN<br>GTB,TBK<br>TGR |

See next page for more complete ordering options

Amerlux reserves the right to change details that do not affect overall function and performance.

www.amerluxexterior.com • 5220 Shank Rd. Pearland, Texas 77581 • (T) 281.997.5400 • (F)281-997-5441

DB6



PROJECT:

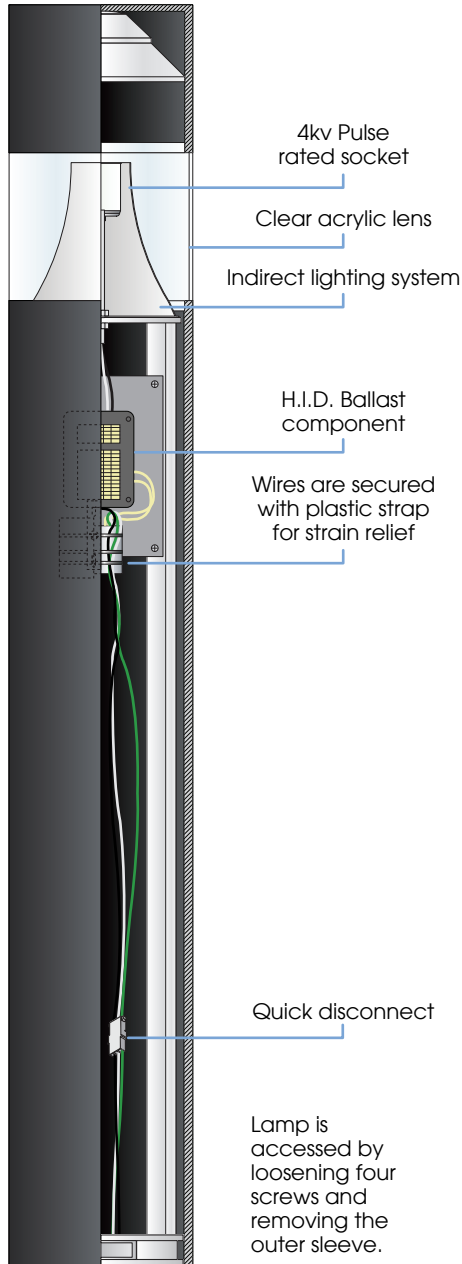
TYPE:



Part String

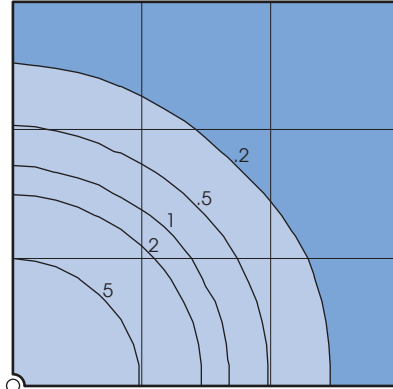
Example: DB6RRT/S5/50MH/120v/BLK



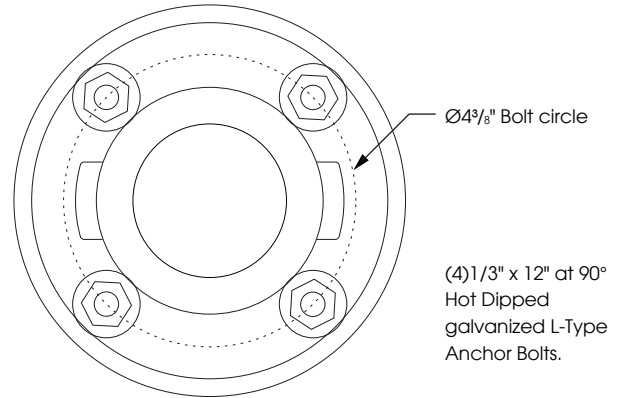


### Standard Photometry

**DB6**  
 with 70MH lamp  
 5,000 Lumen  
 3' Mounting Height  
 Grid Spacing is 12'



### Anchor Details



### Light Sources

| Order Code                  | Description                  | Voltage            | Ballast Circuit Type | Min. Starting Temperature | Standard Socket |
|-----------------------------|------------------------------|--------------------|----------------------|---------------------------|-----------------|
| <b>50MH</b>                 | 50 watt Metal Halide         | 120,277            | HX                   | -20°F                     | Medium          |
| <b>70MH</b>                 | 70 watt Metal Halide         | 120, 208, 240, 277 | HX                   | -20°F                     | Medium          |
| <b>100MH</b>                | 100 watt Metal Halide        | 120, 208, 240, 277 | HX                   | -20°F                     | Medium          |
| <b>35HPS</b>                | 35 watt High Pressure Sodium | 120                | R                    | -40°F                     | Medium          |
| <b>50HPS</b>                | 50 watt High Pressure Sodium | 120, 277           | R                    | -40°F                     | Medium          |
| <b>70HPS</b>                | 70 watt High Pressure Sodium | 120, 208, 240, 277 | R                    | -40°F                     | Medium          |
| <b>CFL13, 26, 32, or 42</b> | Compact Fluorescent          | 120, 208, 240, 277 | ELECTRONIC           | 0°F                       | 4 - pin         |

Ballast Circuit Type Codes: R - Reactor HX - High Reactance Autotransformer CWA - Constant Wattage Autotransformer (R / HX\* depends on voltage selected)  
 480v is available on some ballasts. Contact factory for details. 480v is available on some ballasts. Contact factory for details.