

DU720 SERIES UTILITY LUMINAIRE

U.6.10.16

Features

- Easy accessibility
- Interchangeable ballast pods
- Ease of maintenance
- Optional light control

Installation

The luminaire will mount to a 3" OD post or tenon with 5/16" black oxide coated stainless steel square head set screws to ensure a solid connection. The diffuser will be held to the fitter by (4) 5/16 black oxide coated stainless steel captive square head set screws.

Electrical

- High power factor ballast (HPF), core and coil type, pre-wired and tested (NPF available)
- Easy ballast pod access
- 4KV porcelain socket
- ETL label "suitable for wet location"

Accessories:

- 90 degree house-side shield (**HSS-90**)
- 180 degree house-side shield (**HSS-180**)
- Twist-lock photocell (**PCL-TW**)
- Perforated light lid (**LL**)
- Solid light lid (**SLL**)

Lens

Clear acrylic

Finish:

Premium quality thermoset polyester powdercoat for a durable finish in the following:

BLK - Satin Black

CLB - Classic Bronze

GBZ - Gloss Textured Bronze

GRN - Green

GTB - Gloss Textured Black

TBK - Textured Black

TGR - Gloss Textured Green



Standard



With SLL-FDR

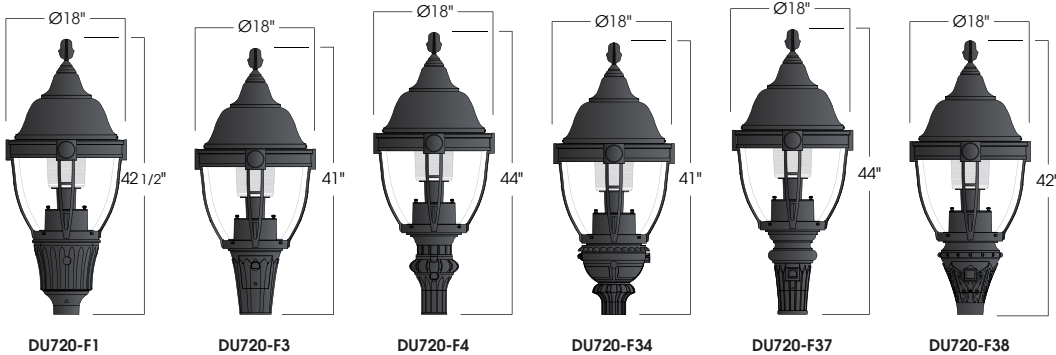
(T5 only)

DU720
UTILITY



PROJECT:

TYPE:



Ordering Information:

Model	Light Control	Light Source	Voltage	Finish	Accessories
DU720-F1 DU720-F3 DU720-F4 DU720-F34 DU720-F37 DU720-F38	L3 L5 LVR FDR HSS	50,70MH 100,150MH 175,250MH-PS 50,70HPS 100,150HPS 250HPS CFL13,26,32,42	120v 208v 240v 277v	BLK CLB GBZ GRN GTB TBK TGR Custom	HSS-90 HSS-180 PCL-TW LL SLL

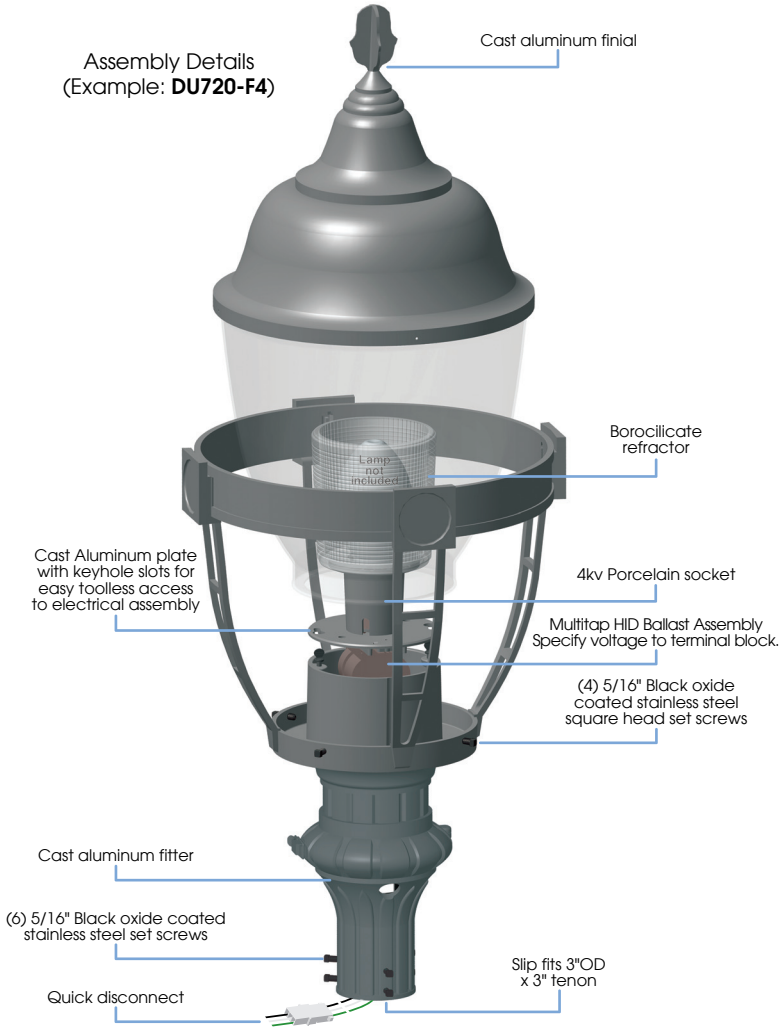
See next page for more complete ordering options



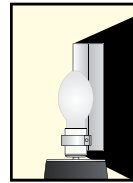
Part String

Example: DU710-F1PC-T5/100MH/120V/BLK

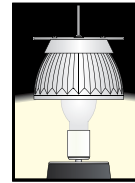
Assembly Details
(Example: **DU720-F4**)



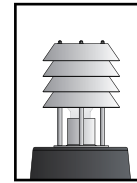
Options



HSS
House Side Shield for use with Optical Systems



FDR
Faceted Downlight Reflector



LVR
4 Tier Anodized Aluminum Louver

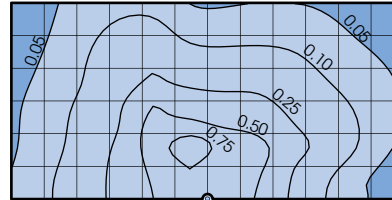


L3 or L5
Type III or Type V Glass Refractor

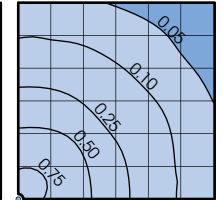
Photometry

DU720 Assembly
175MH lamp
14,000 Lumen
12' Mounting Height
Grid Spacing is 12'

Type III (L3)



Type V (L5)



Socket Types

Wattage	Socket Type
50MH,70MH,100MH,150MH	Medium
175MH-PS,250MH-PS	Mogul
50HPS,70HPS,100HPS	Medium
150HPS,250HPS	Mogul
CFL13,26,32,or 42	4-pin