

DU770AP SERIES UTILITY LUMINAIRE

U.6.10.16

Features

- Easy accessibility
- Interchangeable ballast pods
- Ease of maintenance
- Optional light control

Installation

The luminaire will mount to a 3" OD post or tenon with 5/16" black oxide coated stainless steel square head set screws to ensure a solid connection. The diffuser will be held to the fitter by (4) 5/16 black oxide coated stainless steel captive square head set screws.

Electrical

- High power factor ballast (HPF), core and coil type, pre-wired and tested (NPF available)
- Easy ballast pod access
- 4KV porcelain socket
- ETL label "suitable for wet location"

Accessories:

- 90 degree house-side shield (**HSS-90**)
- 180 degree house-side shield (**HSS-180**)
- Twist-lock photocell (**PCL-TW**)

Diffuser Choices

- Clear textured polycarbonate (**PC-CL**)
- White polycarbonate (**PC-WH**)
- Clear acrylic (**DR-CL**)

Finish:

Premium quality thermoset polyester powdercoat for a durable finish in the following:

- BLK** - Satin Black **GTB** - Gloss Textured Black
CLB - Classic Bronze **TBK** - Textured Black
GBZ - Gloss Textured Bronze **TGR** - Gloss Textured Green
GRN - Green

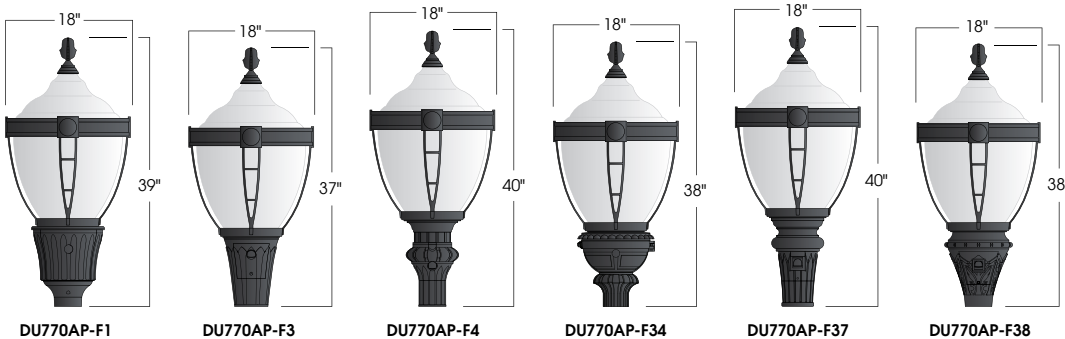


DU770AP
UTILITY



PROJECT:

TYPE:



Ordering Information:

Model	Diffuser Material-Color	Optical Option	Light Source	Voltage	Finish	Accessories
DU770-F1 DU770-F3 DU770-F4 DU770-F34 DU770-F37 DU770-F38	PC-CL PC-WH DR-CL	L3 L5 LVR FDR	50,70MH 100,150MH 175,250MH-PS 50,70HPS 100,150HPS 250HPS CFL13,26,32,42	120v 208v 240v 277v	BLK CLB GBZ GRN GTB TBK TGR Custom	HSS-90 HSS-180 PCL-TW

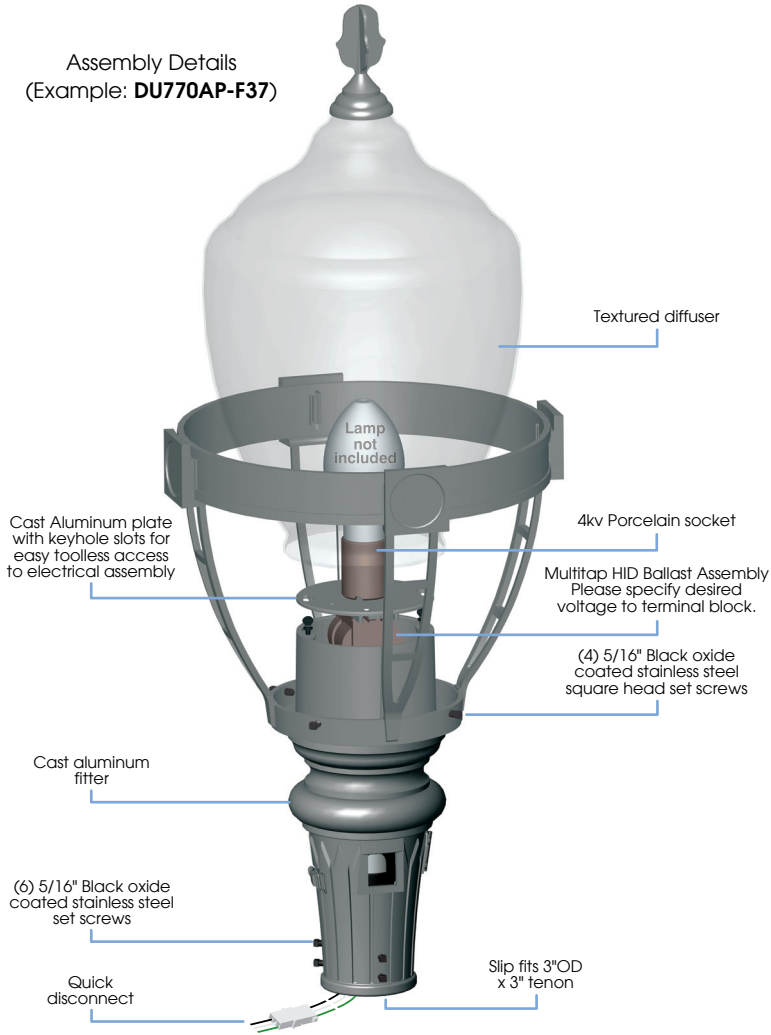
See next page for more complete ordering options



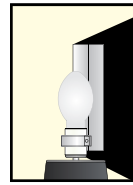
Part String

Example: DU770-F1PC-CL/100MH/120v/BLK

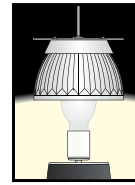
Assembly Details
(Example: DU770AP-F37)



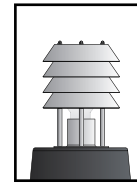
Options



HSS
House Side Shield for use with Optical Systems



FDR
Faceted Downlight Reflector

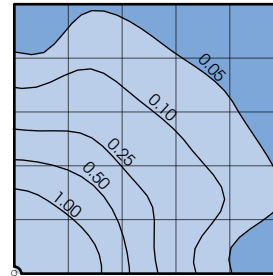


LVR
4 Tier Anodized Aluminum Louver



L3 or L5
Type III or Type V Glass Refractor

Photometry



D770 Assembly
175MH lamp
14,000 Lumen
12' Mounting Height
Grid Spacing is 12'

Socket Types

Wattage	Socket Type
50MH, 70MH, 100MH, 150MH	Medium
175MH-PS, 250MH-PS	Mogul
50HPS, 70HPS, 100HPS	Medium
150HPS, 250HPS	Mogul
CFL13, 26, 32, 42	4-pin