

# DU790 SERIES HID LUMINAIRE

U.1.8.19

## DESCRIPTION

The DU790 Series consists of a Type III(T3) or Type V(T5) refractive borosilicate glass acorn combined with a decorative cage and one of several styles of cast aluminum fitters. The series features easy accessibility to the HID ballast.

## INSTALLATION:

The luminaire will mount to a 3" OD post or tenon with 5/16" black oxide coated stainless steel set screws to ensure a solid connection. The diffuser will be held to the fitter by (4) 1/4-20" black oxide coated stainless steel captive set screws.

## ELECTRICAL:

- High power factor ballast (HPF), core and coil type, pre-wired and tested
- Easy ballast pod access
- 4KV pulse rated porcelain socket
- Suitable for wet location

**ETL listed, suitable for wet locations.**

## DIFFUSER:

- The fixture will have a high performance borosilicate glass refractive acorn.
- Specify Type III (T3) or Type V (T5) distribution.

## FINISH:

Durable thermoset polyester powdercoat finish in the following:

- Satin Black (**BLK**)
- Classic Bronze (**CLB**)
- Gloss Textured Bronze (**GBZ**)
- Green (**GRN**)
- Gloss Textured Black (**GTB**)
- Textured Black (**TBK**)
- Gloss Textured Green (**TGR**)

## ACCESSORIES:

- Cast aluminum finial (**CFIN**)
- Cast aluminum finial (**FIN-08**)
- 90 degree house-side shield (**HSS-90**)
- 180 degree house-side shield (**HSS-180**)
- Twistlock Photocell (**TW-PCL**)

DU790  
HID UTILITY

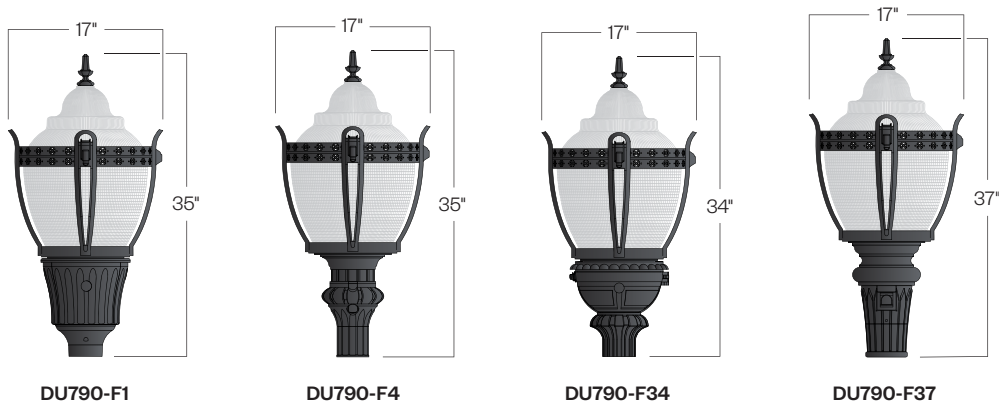


PROJECT:

LOCATION:

FIXTURE TYPE:

NOTES:



# DU790 SERIES HID LUMINAIRE

DU790  
HID UTILITY

## Ordering Information



Add additional accessories as needed.

- 1** Model  
**DU790-F1**  
**DU790-F4**  
**DU790-F34**  
**DU790-F37**

- 2** Lens Distribution  
**T3** - Type 3  
**T5** - Type 5

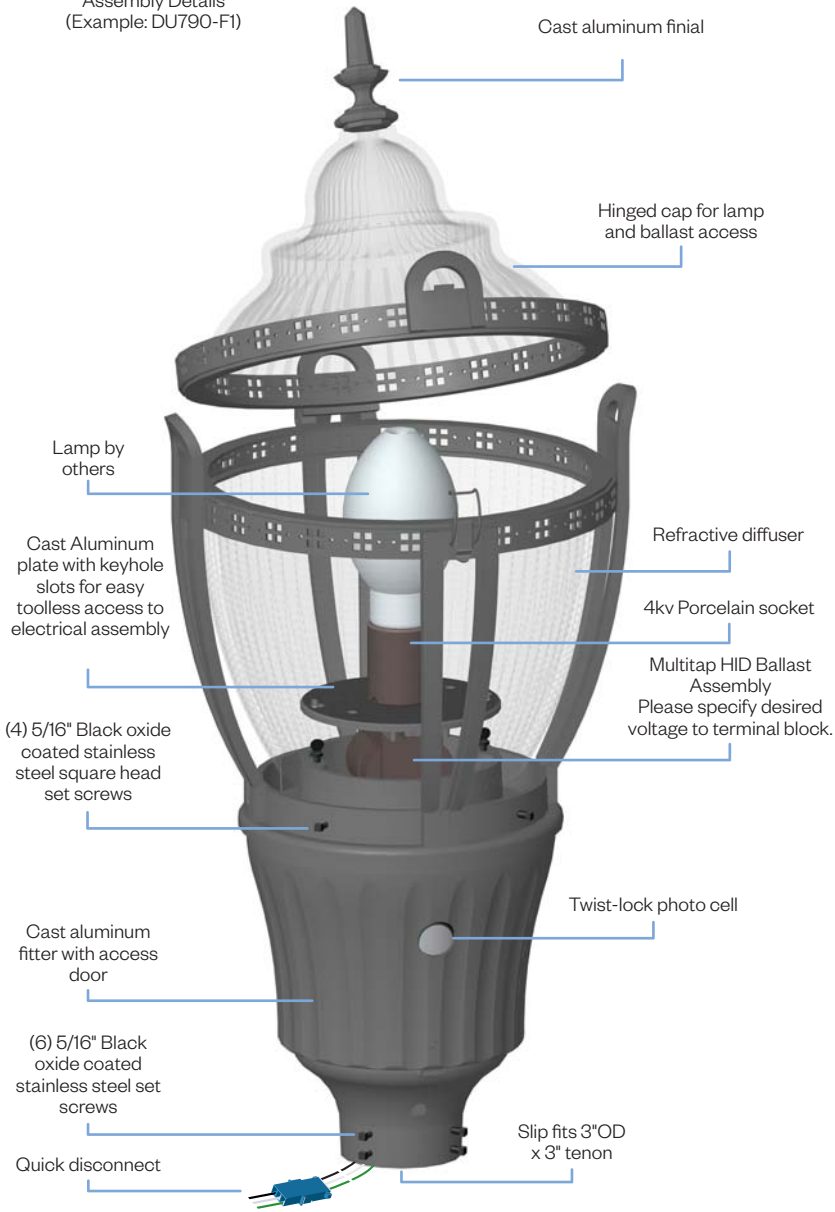
- 3** Light Source  
**70MH** - 70w Metal Halide  
**100MH** - 100w Metal Halide  
**150MH** - 150w Metal Halide  
**70HPS** - 70w High Pressure Sodium  
**100HPS** - 100w High Pressure Sodium  
**150HPS** - 150w High Pressure Sodium

- 4** Voltage  
**120v**  
**208v**  
**240v**  
**277v**

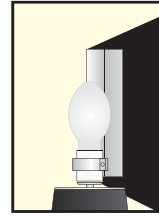
- 5** Finish  
**BLK** - Satin Black  
**CLB** - Classic Bronze  
**GBZ** - Gloss Textured Bronze  
**GRN** - Green  
**GTB** - Gloss Textured Black  
**TBK** - Textured Black  
**TGR** - Gloss Textured Green  
**CSTM** - Custom

- 6** Accessories  
**CFIN** - Cast Aluminum Finial  
**FIN-08** - Cast Aluminum Finial  
**HSS-90** - 90° House Side Shield  
**HSS-180** - 180° House Side Shield  
**TW-PCL** - Dusk-to-dawn photocell

Assembly Details  
(Example: DU790-F1)



Options



HSS  
House Side  
Shield

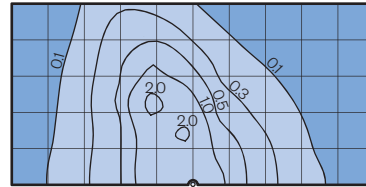


FDR  
Faceted  
Downlight  
Reflector

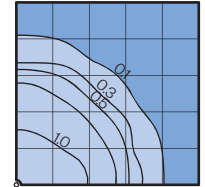
Photometry

DU790 Assembly  
with 175MH lamp  
14,000 Lumen  
12' Mounting Height  
Grid Spacing is 12'

Type III (T3)



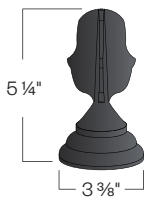
Type V (T5)



Socket Types

Wattage	Socket Type
50MH,70MH,100MH,150MH	Medium
50HPS,70HPS,100HPS	Medium
150HPS	Mogul

Finial Styles



**CFIN**  
(Cast aluminum)



**FIN-08**  
Cast aluminum finial