

DU790 SERIES HID LUMINAIRE

U.18.19

DESCRIPTION

The DU790 Series consists of a Type III(T3) or Type V(T5) refractive borosilicate glass acorn combined with a decorative cage and one of several styles of cast aluminum fitters. The series features easy accessibility to the HID ballast.

INSTALLATION:

The luminaire will mount to a 3" OD post or tenon with 5/16" black oxide coated stainless steel set screws to ensure a solid connection. The diffuser will be held to the fitter by (4) 1/4-20" black oxide coated stainless steel captive set screws.

ELECTRICAL:

- High power factor ballast (HPF), core and coil type, pre-wired and tested
- Easy ballast pod access
- 4KV pulse rated porcelain socket
- Suitable for wet location

ETL listed, suitable for wet locations.

DIFFUSER:

- The fixture will have a high performance borosilicate glass refractive acorn.
- Specify Type III (T3) or Type V (T5) distribution.

FINISH:

Durable thermoset polyester powdercoat finish in the following:

- Satin Black (**BLK**)
- Classic Bronze (**CLB**)
- Gloss Textured Bronze (**GBZ**)
- Green (**GRN**)
- Gloss Textured Black (**GTB**)
- Textured Black (**TBK**)
- Gloss Textured Green (**TGR**)

ACCESSORIES:

- 90 degree house-side shield (**HSS-90**)
- 180 degree house-side shield (**HSS-180**)
- Twistlock Photocell (**TW-PCL**)

DU790
HID UTILITY

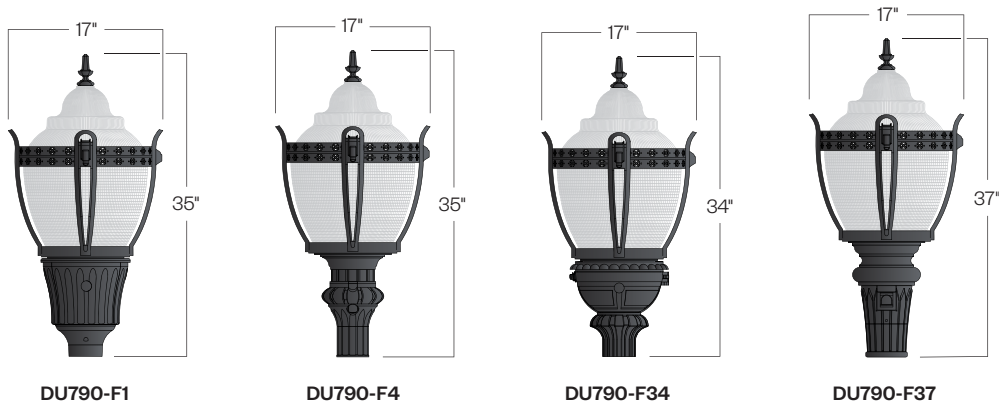


PROJECT:

LOCATION:

FIXTURE TYPE:

NOTES:



DU790 SERIES HID LUMINAIRE

DU790
HID UTILITY

Ordering Information



Add additional accessories as needed.

1 Model
DU790-F1
DU790-F4
DU790-F34
DU790-F37

2 Lens Distribution
T3 - Type 3
T5 - Type 5

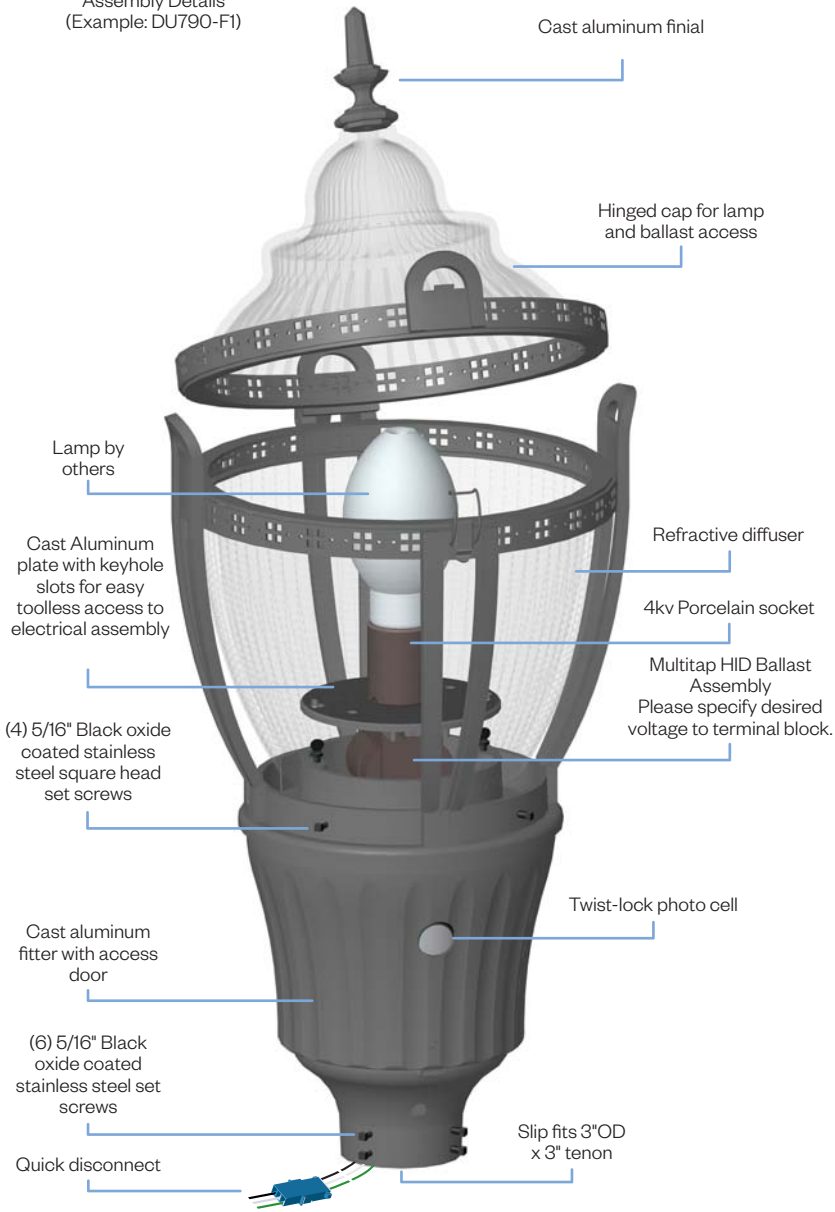
3 Light Source
70MH - 70w Metal Halide
100MH - 100w Metal Halide
150MH - 150w Metal Halide
70HPS - 70w High Pressure Sodium
100HPS - 100w High Pressure Sodium
150HPS - 150w High Pressure Sodium

4 Voltage
120v
208v
240v
277v

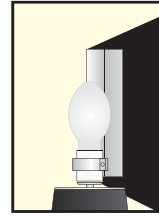
5 Finish
BLK - Satin Black
CLB - Classic Bronze
GBZ - Gloss Textured Bronze
GRN - Green
GTB - Gloss Textured Black
TBK - Textured Black
TGR - Gloss Textured Green
CSTM - Custom

6 Accessories
HSS-90 - 90° House Side Shield
HSS-180 - 180° House Side Shield
TW-PCL - Dusk-to-dawn photocell

Assembly Details
(Example: DU790-F1)



Options



HSS
House Side
Shield

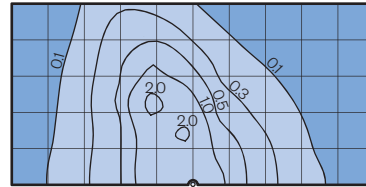


FDR
Faceted
Downlight
Reflector

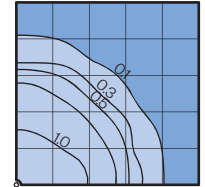
Photometry

DU790 Assembly
with 175MH lamp
14,000 Lumen
12' Mounting Height
Grid Spacing is 12'

Type III (T3)



Type V (T5)



Socket Types

Wattage	Socket Type
50MH,70MH,100MH,150MH	Medium
50HPS,70HPS,100HPS	Medium
150HPS	Mogul