

DUASR SERIES UTILITY LUMINAIRE

U.2.28.17

DUASR
HID UTILITY

DESCRIPTION:

The ASR26 Series consists of a high performance luminaire designed around an efficient Type III (T3) or Type V (T5) refractive acorn combined with one of several styles of cast aluminum utility fitters.

INSTALLATION:

The luminaire will mount to a 3" OD post or tenon with 5/16" black oxide coated stainless steel set screws to ensure a solid connection. The diffuser will be held to the fitter by (4) 1/4"-20" black oxide coated stainless steel captive set screws.

ELECTRICAL:

- High power factor ballast (HPF), core and coil type, pre-wired and tested
- Easy ballast pod access
- 4KV pulse rated porcelain socket
- Suitable for wet location

ETL listed, suitable for wet locations.

ACCESSORIES:

- Cast aluminum Finial (**CFIN**)
- Faceted Downlight Reflector (**SLL-FDR**)
- 90 Degree house-side shield (**HSS-90**)
- 180 Degree house-side shield (**HSS-180**)
- Dusk-to-dawn Photocell (**PCL**)

DIFFUSER CHOICES:

- Acrylic Type III (**AC-T3**)
- Acrylic Type V (**AC-T5**)
- Polycarbonate Type III (**PC-T3**)
- Polycarbonate Type V (**PC-T5**)

FINISH:

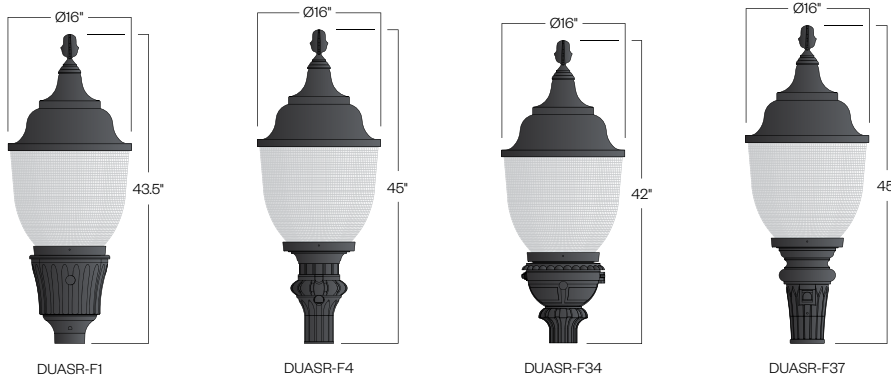
Durable thermoset polyester powdercoat finish in the following:

- Satin Black (**BLK**)
- Classic Bronze (**CLB**)
- Gloss Textured Bronze (**GBZ**)
- Green (**GRN**)
- Gloss Textured Black (**GTB**)
- Textured Black (**TBK**)
- Gloss Textured Green (**TGR**)



PROJECT:

TYPE:



Ordering Information:

Model	Lens Material	Light Distribution	Light Source	Voltage	Finish	Accessories
DUASR-F1 DUASR-F4 DUASR-F34 DUASR-F37	AC PC	T3 T5	70MH 100,150MH 70HPS 100,150HPS	120v 208v 240v 277v	BLK CLB GBZ GRN GTB TBK TGR Custom	HSS-90 HSS-180 PCL-TW

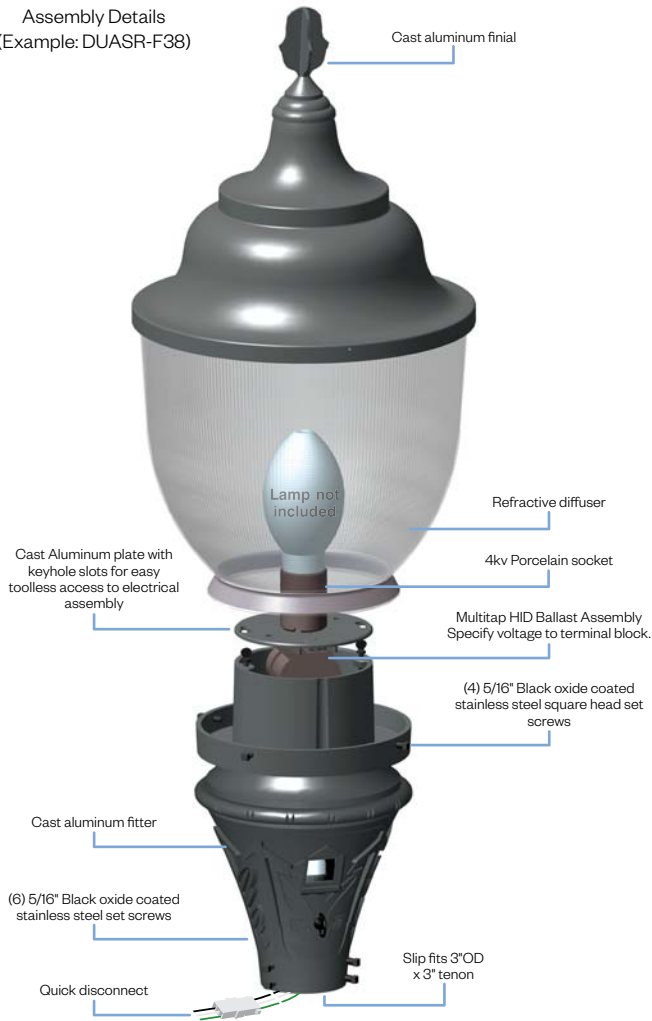
See next page for more complete ordering options



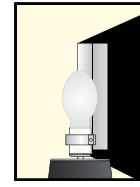
Part String

Example: DUASR-F1/PC-T5/100MH/120v/BLK

Assembly Details
(Example: DUASR-F38)



Options

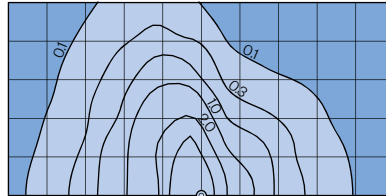


HSS90 & HSS180
House Side Shield for use with Optical Systems

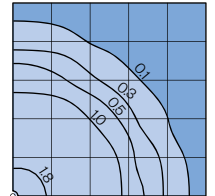
Photometry

DUASR Assembly
175MH lamp
14,000 Lumen
12' Mounting Height
Grid Spacing is 12'

Type III (T3)



Type V (T5)



Socket Types

Wattage	Socket Type
70MH,100MH,150MH	Medium
70HPS,100HPS	Medium
150HPS	Mogul