

# LINEA® 2.5" DIRECT/INDIRECT

## LINEAR DIRECT/INDIRECT LED

### APPLICATIONS:

Commercial and retail direct/indirect ambient lighting

### CONSTRUCTION:

One piece extruded aluminum housing  
Internal components are die-formed galvanized and cold-rolled steel  
Individual housing lengths are 47 3/4" or 95 1/4"  
Can be configured in continuous rows to custom lengths or in patterns. Please consult factory.  
High reflectance white finish. For other finishes, consult factory

### MOUNTING:

Aircraft cable suspension or wall mount  
Fixtures may be continuously row-mounted or configured in a pattern, consult factory  
Ideal fixture placement: 18" minimum from ceiling to top of fixture

### LABELING:



For indoor use only

### OPTICS:

Watts	Lumens	Lumens/Watt
5/5 per ft	1119 lm/ft	116.4 lpw
10/10 per/ft	2075 lm/ft	104 lpw

Die-formed high reflectance white enamel reflector

**Direct Lens:** Extruded white acrylic lens, snap-in, 8' maximum section. Amerlux exclusive white acrylic lens provides excellent transmission while effectively concealing lamp image. Specify either Designer Lens (DL), which provides flat even glow on lens or Performance Lens (PL), which provides higher efficiency with a greater linear hot spot (no LED imaging) on lens. Performance Lens is standard

**Indirect Lens:** Clear overlay lens

### ELECTRICAL:

Electronic, multi-volt (120v-277v) constant current driver  
0-10v dimming, down to 1%, standard

**This product complies with IEEE C62.41 for surge endurance up to 3KV. Amerlux® recommends using additional surge protection with this unit (supplied by others), surge damage is not covered by warranty.**

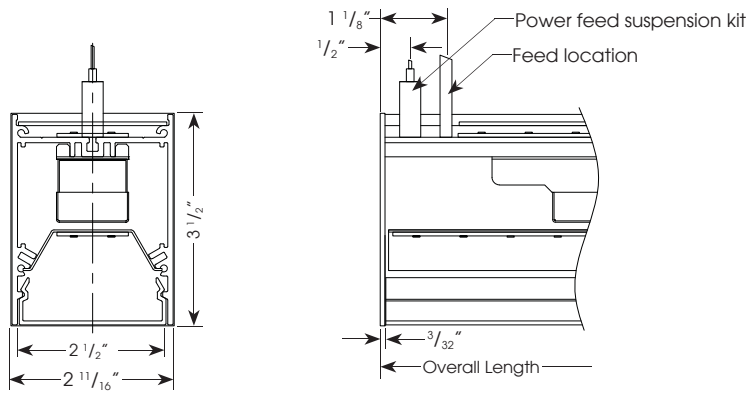
**Emergency circuit via remote inverter or auxiliary emergency power supply (by others)**

LIN2.5-DI  
LED



PROJECT:

TYPE:

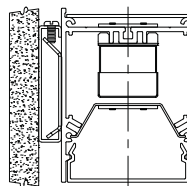


### ELECTRICAL

Electronic driver

Wattage per foot	System voltage	4'		8'	
		System watts	Amps	System watts	Amps
5	120v	40	0.33	80	0.67
	277v	40	0.14	80	0.28
10	120v	84	0.70	168	1.40
	277v	84	0.30	168	0.61

Wall Mount option



  
Electrostatic sensitive device,  
observe precautions for  
handling



Enlighted Sensor  
(optional)

**10** year limited  
warranty  
AMERLUX LED  
(see website for details)

### ORDERING INFORMATION:

Model	Light Distr./Shielding (select 1 from each list)	Mounting	Circuiting	Wattage (D/I)	Lamp Type	Color Temp	Finish	Voltage	Length*	Configuration	Options
LIN2.5-DI	<b>DIRECT:</b> DL - designer lens PL - performance lens (standard)  <b>INDIRECT:</b> UC - clear cover	ASW10 - aircraft cable with straight feed, (18ga., 5 conductor), white, 10' WM - wall mount	1 - single circuit  2 - up/dn switch separately	5/5 10/10 5/10 10/5 Consult factory for other wattage configurations	LED	2700 3000 3500 4000	HW - high reflectance white _____ (other RAL)	120 277	4 8  (run to nearest foot)*	IND - individual BOR - beginning of run MOR - middle of run EOR - end of run  Consult factory for patterns	HILUME-DH - Lutron Hi-lume® 3 wire, 1% dim (A series) HILUME-ECO - Lutron Hi-lume® EcoSystem, 1% dim (A series) ENLS - Enlighted Sensor

\*Note - For 10w fixtures - Due to driver limitations, not all output & length configurations are possible. Please consult factory.

Example: LIN2.5-DI-DL-UC-ASW10-2-5/5-LED-3500-HW-120-4-IND

Cat #:

Amerlux reserves the right to change details that do not affect overall function and performance.



# LINEA® 2.5" DIRECT/INDIRECT

LINEAR DIRECT/INDIRECT LED

LIN2.5-DI  
LED

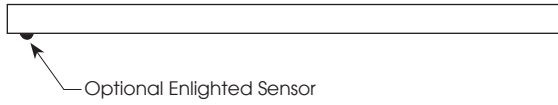


TYPE:



## STANDARD PLACEMENT(S) FOR (OPTIONAL) ENLIGHTENED SENSOR:

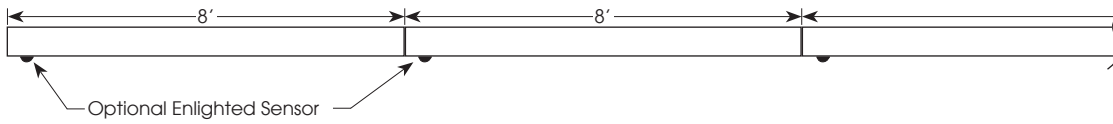
### 4 FT OR 8 FT DIRECT/INDIRECT, 1 CIRCUIT



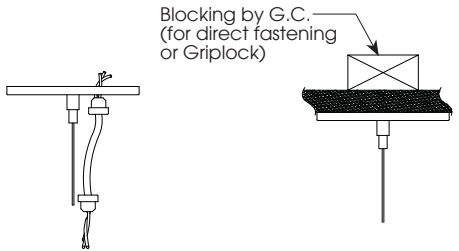
### 4 FT OR 8 FT DIRECT/INDIRECT, 2 CIRCUIT



### RUNS



## SUSPENSION/CANOPY KITS (INCLUDED):



Power Feed Canopy  
ASW10:  
120" aircraft cable  
10' white cord 18/5,  
Ø5" white canopy

Non-Feed Canopy  
ASW10:  
120" aircraft cable  
Ø5" white canopy

Blocking by G.C.  
(for direct fastening  
or Griplock)

# LINEA® 2.5" DIRECT/INDIRECT

LINEAR DIRECT/INDIRECT LED

LIN2.5-DI  
LED



TYPE:



**FIXTURE DATA - DIRECT COMPONENT:**

Complete photometric data (.ies format) available upon request.

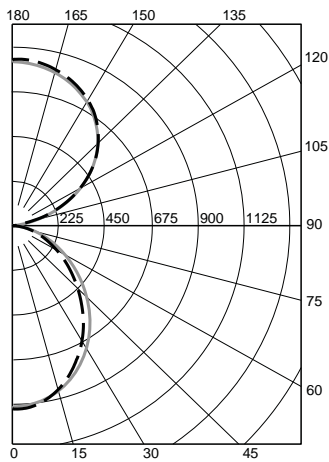
**PERFORMANCE LENS:**

LINEA 2.5" DIRECT/INDIRECT, 5/5 PER FT, 4' FIXTURE, 3000K  
Lamp: 256 white LED's  
Mounting: Pendant Indirect

LENS DIRECT/INDIRECT  
LTL# 1238334  
LUMENS: 1119/FT

LINEA 2.5" DIRECT, 10/10 PERFT, 4' FIXTURE, 3000K  
Lamp: 256 white LED's  
Mounting: Pendant Indirect

LENS DIRECT/INDIRECT  
LTL# 1238335  
LUMENS: 2075/FT

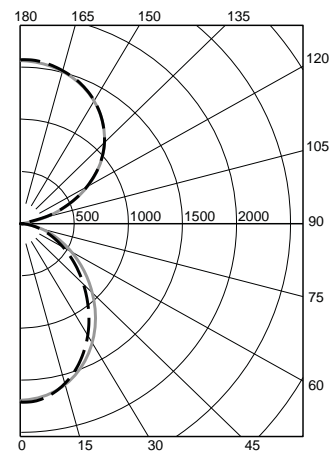


Zone	Lumens	%Fixt
0-40	1065	23.8
0-60	1730	38.7
0-90	2093	46.7
90-180	2384	53.3

Efficacy (lumens/watt) = 116.4 lpw

**COEFFICIENTS OF UTILIZATION**

RC	RW			
	70	50	30	10
0	4761	4761	4761	4761
1	4354	4165	3995	3842
2	3973	3649	3381	3156
3	3631	3217	2897	2642
4	3327	2854	2508	2244
5	3058	2548	2192	1929
6	2820	2289	1934	1678
7	2610	2070	1720	1475
8	2423	1881	1541	1307
9	2257	1719	1389	1167
10	2109	1578	1260	1048



Zone	Lumens	%Fixt
0-40	1970	23.7
0-60	3194	38.5
0-90	3855	46.5
90-180	4444	53.5

Efficacy (lumens/watt) = 104 lpw

**COEFFICIENTS OF UTILIZATION**

RC	RW			
	70	50	30	10
0	8821	8821	8821	8821
1	8068	7718	7404	7121
2	7363	6764	6268	5851
3	6730	5964	5371	4898
4	6167	5292	4651	4161
5	5668	4724	4065	3578
6	5226	4245	3586	3113
7	4837	3837	3190	2736
8	4491	3488	2857	2424
9	4184	3187	2577	2164
10	3910	2925	2336	1944