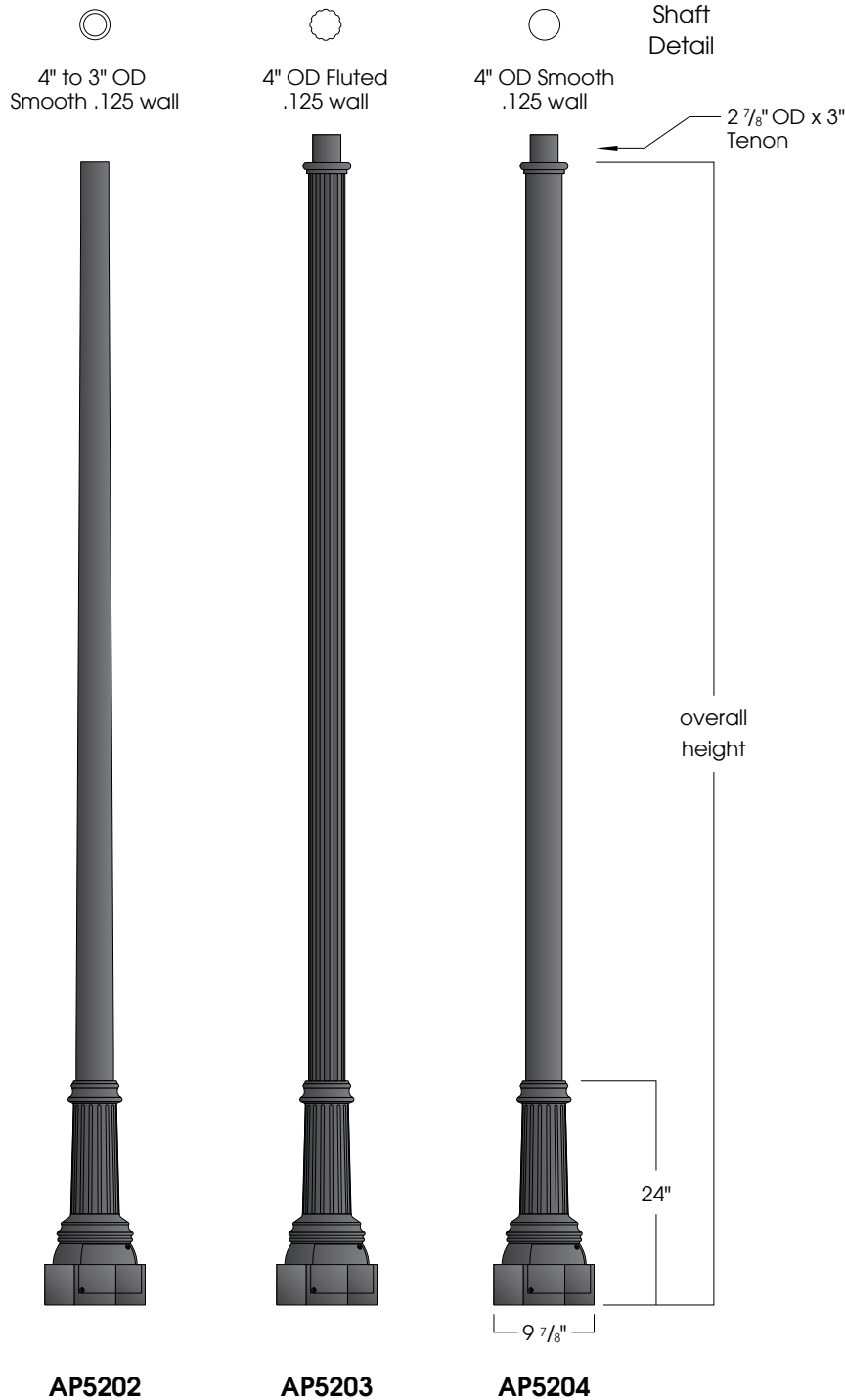


New Orleans Series

U.4.1.16



Features:

9 7/8" octagonal aluminum base cast from a permanent mold (.250 min. wall)

Choice of extruded shafts

- 4" to 3" tapered
- 4" OD fluted (12 flutes .125 wall)
- 4" OD smooth round .125 wall

Extruded shaft is circumferentially welded to the base

Access door for anchor bolts and wiring is secured with tamper resistant stainless steel screws

Ground lug provided inside base

Materials:

Base - Cast aluminum (356-T6)

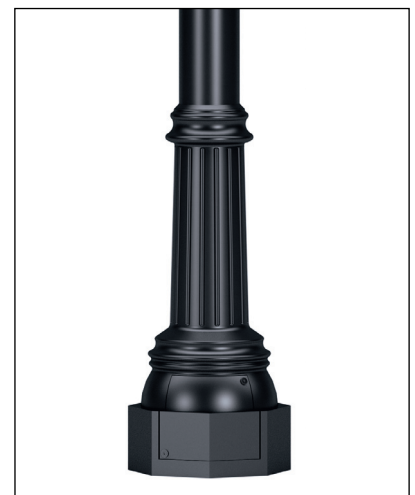
Shaft - Extruded Aluminum (6003-T6)

- Tapered Aluminum (6063-T6)

Anchor Bolts - Hot dipped galvanized steel included

Finish:

Premium quality thermoset polyester powdercoat for a durable finish.

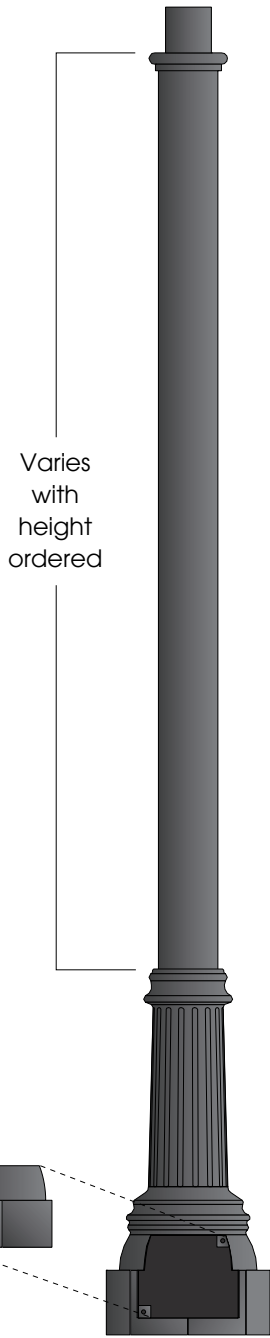


Part String



Example: D5202-08/BLK

AP5202-xx	AP5203-xx	AP5204-xx	Overall Height	Finish	Accessories
AP5202-08	AP5203-08	AP5204-08	8'-0"	BLK, CLB GBZ, GRN GTB, TBK TGR	BA18 BA24 FPH-4 GFCI
AP5202-10	AP5203-10	AP5204-10	10'-0"		
AP5202-12	AP5203-12	AP5204-12	12'-0"		
AP5202-14	AP5203-14	AP5204-14	14'-0"		

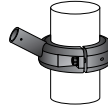


Accessories See "Accessories" section for more information



Banner Arms

Single or double sided field rotatable banner arms. **BA18** (18") or **BA24** (24") banner arms **FRC4** (4"OD shaft) or **FRC5** (5"OD shaft) Add a (2) for a double arm. Example: **2BA18-FRC4**



FPH-4

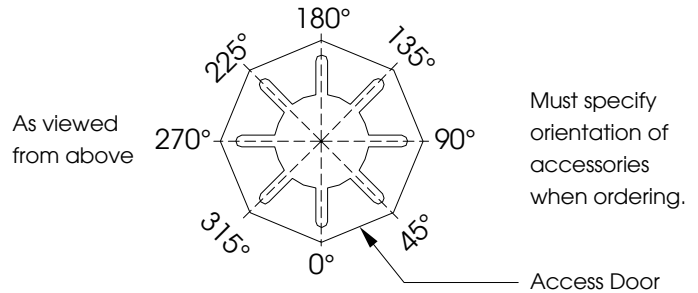
Extruded aluminum holder for 1" OD flag poles. Available for 4" OD non-tapered pole.



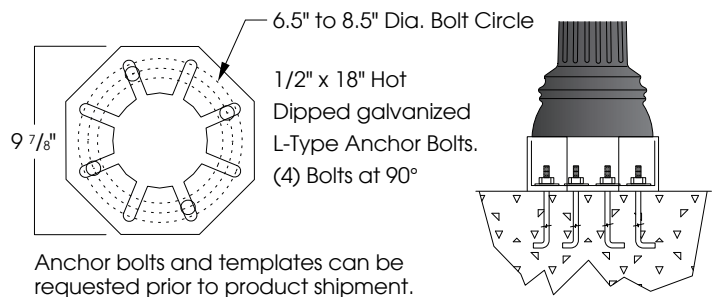
GFCI

Ground fault circuit protected duplex outlet. Available Recess mounted (GFCI-RM) as shown or surface mount (GFCI-SM).

Accessory Orientation Guide



Anchor Details



Anchor bolts and templates can be requested prior to product shipment.

Finish
The post will be finished with an electrostatically applied thermoset polyester powder coat. Prior to finishing, the parts are thoroughly cleaned. Our powder coat finish is durable, long lasting, attractive and scratch resistant as well as environmentally friendly. We offer 7 stock finishes or hundreds of special order colors including custom matching for existing projects (additional charges apply).

- BLK** - Satin Black
- CLB** - Classic Bronze
- GBZ** - Gloss Textured Bronze
- GRN** - Green
- GTB** - Gloss Textured Black
- TBK** - Textured Black
- TGR** - Gloss Textured Green

