

MULTIPLE SEMI-RECESSED ADJUSTABLE 1LT T4 METAL HALIDE

MSRA-1
1LT T4 MH

APPLICATION:

Retail and commercial accent and display lighting

MOUNTING:

For use in T-grid or sheet rock ceilings

CONSTRUCTION:

Steel housing and j-box
Twist on/off lens holder for easy relamping
Thermally protected
358° rotation, 75° lockable tilt

LABELING:

UL and CUL listed
Damp location

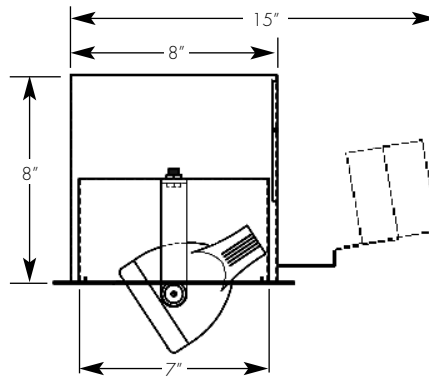
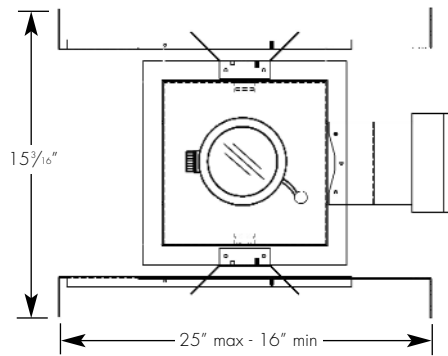
OPTICS:

High performance specular aluminum reflector,
specially designed for T4 metal halide lamps
Available in a variety of beam spreads



PROJECT:

TYPE:



Ceiling cut out dimension: 8 1/8" sq

ELECTRICAL

| Ballast | Voltage | Lamping | | | | | |
|------------|---------|-------------|-------|-------------|-------|-------------|-------|
| | | 1-20w | | 1-39w | | 1-70w | |
| | | Input watts | Amps* | Input watts | Amps* | Input watts | Amps* |
| Electronic | 120v | 23 | .20 | 44 | .37 | 79 | .67 |
| | 277v | 22 | .09 | 46 | .17 | 79 | .29 |

*Data is for open circuit current

T4 G8.5 base metal halide, 20w, 39w and 70w

Amerlux reserves the right to change details that do not affect overall function and performance.



ORDERING INFORMATION:

| Model | # Lamps | Wattage | Lamp Type | Ballast | Finish | Voltage | Beam Spreads | Trim Finish | Options/Accessories |
|-------|---------|----------------|-----------|----------------|--------------------------------------------------------------------------------------------|----------------------------------------------|--------------------------------------------------------------------------------------------|---------------------|---------------------------------------------------------------------------------------------------------------------------------------------------------------------|
| MSRA | 1 | 20 39 70 | T4 | E - electronic | WT - white textured BT - black textured ST - silver textured _____ (other RAL) | 120 (20w) 277 (20w) 120/277U (39w/70w) | CL - spot NF - narrow flood FL - flood VF - wide flood SL - linear spread lens | WT - white textured | GOLD - ferric gold optic reflector DB2690 - DB2690 optic reflector HEX - hexcell louver (1/8" x 1/8") SN - snoot, specify length and finish, 3/4" standard |

Example: MSRA-1-39-T4-E-BT-120/277U-CL-WT

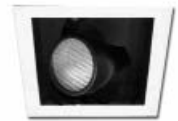
Cat #:

MULTIPLE SEMI-RECESSED ADJUSTABLE 1LT T4 METAL HALIDE

MSRA-1
1LT T4 MH



TYPE :

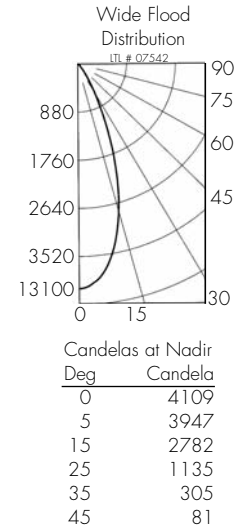
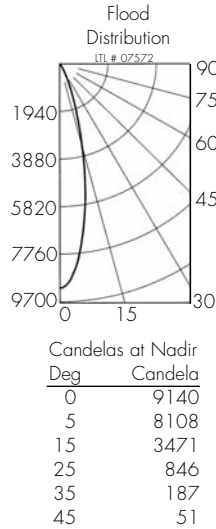
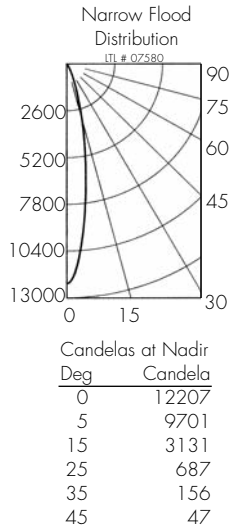
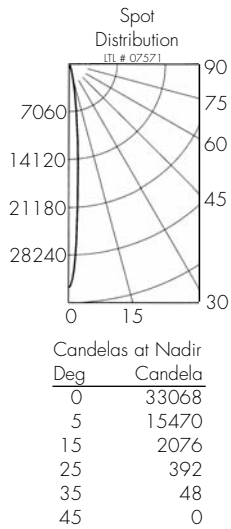


FIXTURE DATA:

For 20w data, multiply by .51; For 70w data, multiply by 1.9

Complete photometric data (.ies format) available upon request.

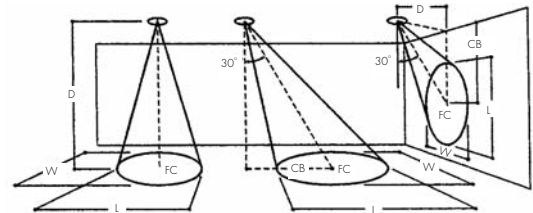
39W T4 MH



APPLICATION DATA:

Notes and Definitions:

Beam spread is to 50% center beam candlepower (CBCP).
 D=Distance to floor or wall.
 FC=Footcandles on floor or wall at center beam aiming location.
 L=Effective Visual Beam length in feet (50% of maximum footcandle level).
 W=Effective Visual Beam width in feet (50% of maximum footcandle level).
 CB=Distance across or down to center beam location.



0° Aiming Angle
Horizontal
Footcandles



30° Aiming Angle
Horizontal
Footcandles



30° Aiming Angle
Vertical
Footcandles



60° Aiming Angle
Vertical
Footcandles

| | 0° Aiming Angle | | | | 30° Aiming Angle | | | | | 60° Aiming Angle | | | | | | | | | |
|--------------|-----------------|------|-----|-----|------------------|-----|-----|-----|-----|------------------|-----|-----|-----|-----|------|------|-----|-----|-----|
| | D | FC | L | W | D | FC | L | W | CB | D | FC | L | W | CB | | | | | |
| SPOT | 5.0' | 1322 | 1.1 | 1.1 | 5.0' | 858 | 1.3 | 1.2 | 2.9 | 3.0' | 459 | 2.1 | 1.0 | 4.8 | 3.0' | 2346 | 0.7 | 0.6 | 1.8 |
| | 7.5' | 587 | 1.4 | 1.4 | 7.5' | 382 | 1.7 | 1.5 | 4.3 | 4.0' | 267 | 2.7 | 1.4 | 6.8 | 4.0' | 1337 | 0.9 | 0.8 | 2.2 |
| | 10.0' | 330 | 1.7 | 1.7 | 10.0' | 214 | 2.2 | 1.9 | 5.8 | 5.0' | 173 | 3.3 | 1.7 | 8.3 | 5.0' | 841 | 1.2 | 1.0 | 2.7 |
| | 12.5' | 211 | 2.0 | 2.0 | 12.5' | 137 | 2.9 | 2.5 | 7.2 | 6.0' | 119 | 4.0 | 2.0 | 9.8 | 6.0' | 566 | 1.4 | 1.2 | 3.2 |
| NARROW FLOOD | 5.0' | 488 | 1.7 | 1.7 | 5.0' | 317 | 2.3 | 1.9 | 2.9 | 3.0' | 203 | 3.3 | 1.9 | 4.2 | 3.0' | 868 | 1.4 | 1.2 | 1.7 |
| | 7.5' | 217 | 2.6 | 2.6 | 7.5' | 140 | 3.4 | 3.0 | 4.3 | 4.0' | 114 | 4.4 | 2.5 | 5.8 | 4.0' | 497 | 1.8 | 1.6 | 2.2 |
| | 10.0' | 122 | 3.4 | 3.4 | 10.0' | 79 | 4.4 | 3.8 | 5.8 | 5.0' | 73 | 5.5 | 3.2 | 7.3 | 5.0' | 318 | 2.2 | 1.9 | 2.7 |
| | 12.5' | 78 | 4.2 | 4.2 | 12.5' | 51 | 5.5 | 4.8 | 7.2 | 6.0' | 51 | 6.6 | 3.8 | 8.8 | 6.0' | 221 | 2.7 | 2.3 | 3.2 |
| FLOOD | 5.0' | 364 | 2.2 | 2.2 | 5.0' | 237 | 2.8 | 2.5 | 2.9 | 3.0' | 175 | 3.5 | 2.2 | 4.3 | 3.0' | 652 | 1.7 | 1.5 | 1.7 |
| | 7.5' | 162 | 3.2 | 3.2 | 7.5' | 105 | 4.2 | 3.7 | 4.3 | 4.0' | 99 | 4.6 | 2.9 | 2.3 | 4.0' | 375 | 2.2 | 2.0 | 2.3 |
| | 10.0' | 91 | 4.3 | 4.3 | 10.0' | 61 | 5.5 | 4.8 | 4.7 | 5.0' | 63 | 5.8 | 3.7 | 6.2 | 5.0' | 242 | 2.7 | 2.5 | 2.8 |
| | 12.5' | 59 | 5.3 | 5.3 | 12.5' | 39 | 6.7 | 6.0 | 6.2 | 6.0' | 44 | 7.2 | 4.6 | 7.8 | 6.0' | 139 | 3.7 | 3.4 | 3.3 |
| WIDE FLOOD | 5.0' | 164 | 3.2 | 3.2 | 5.0' | 116 | 3.8 | 3.4 | 1.9 | 3.0' | 108 | 3.4 | 2.7 | 3.2 | 3.0' | 329 | 2.2 | 2.0 | 1.2 |
| | 7.5' | 73 | 4.8 | 4.8 | 7.5' | 53 | 5.5 | 5.1 | 3.3 | 4.0' | 61 | 4.5 | 3.6 | 4.3 | 4.0' | 184 | 2.9 | 2.7 | 1.7 |
| | 10.0' | 41 | 6.3 | 6.3 | 10.0' | 29 | 7.4 | 7.0 | 4.8 | 5.0' | 39 | 5.7 | 4.6 | 5.2 | 5.0' | 118 | 3.7 | 3.4 | 2.3 |
| | 12.5' | 26 | 7.9 | 7.9 | 12.5' | 19 | 9.1 | 8.6 | 5.2 | 6.0' | 27 | 6.8 | 5.5 | 6.3 | 6.0' | 82 | 4.4 | 4.1 | 2.7 |