

MULTIPLE SEMI-RECESSED ADJUSTABLE 3LT CDM-T_m MINI MASTER COLOR METAL HALIDE

MSRA-3
3LT CDM-T_m MH

APPLICATION:

Retail and commercial accent and display lighting

MOUNTING:

For use in T-grid or sheet rock ceilings

CONSTRUCTION:

Steel housing and j-box
Twist on/off lens holder for easy relamping
Thermally protected
358° rotation, 75° lockable tilt

LABELING:

cUL listed
Damp location

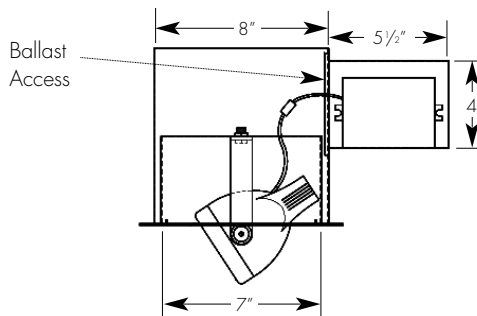
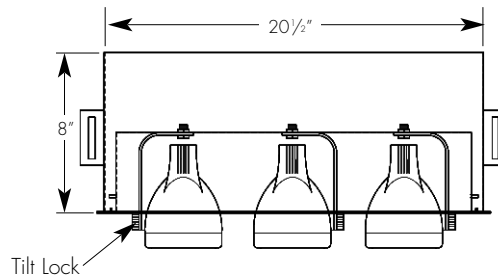
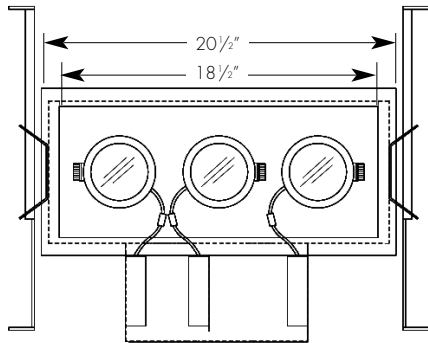
OPTICS:

High performance specular aluminum reflector
Available in a variety of beam spreads



PROJECT:

TYPE:



Ceiling cut out dimension: 8 1/8" x 20 3/8"

ELECTRICAL

Ballast	Voltage	Lamping			
		3-20w		3-39w	
		Input watts	Amps*	Input watts	Amps*
Electronic	120v	78	.69	135	1.20
	277v	78	.36	135	0.60

*Data is for open circuit current
3 CDM-T_m PGJ5 base metal halide, 20w and 39w

Amerlux reserves the right to change details that do not affect overall function and performance.



ORDERING INFORMATION:

Model	# Lamps	Wattage	Lamp Type	Ballast	Finish	Voltage	Beam Spreads*			Trim Finish	Options/ Accessories
							Lamp 1	Lamp 2	Lamp 3		
MSRA	3	20 39	MM - mini MasterColor® CDM-T _m	E - electronic	WT - white textured BT - black textured ST - silver textured - (other RAL)	120 277	CL NF FL WF	CL NF FL WF	CL NF FL WF	WT - white textured	GOLD - ferric gold optic reflector DB2690 - DB2690 optic reflector HEX - hexcell louver (1/8" x 1/8") SN - snoot, specify length and finish, 3/4" standard

*CL - spot
NF - narrow flood
FL - flood
WF - wide flood

Example: MSRA-3-20-MM-E-WT-120-CL-NF-CL-WT

Cat #:

MULTIPLE SEMI-RECESSED ADJUSTABLE 3LT CDM-T_m MINI MASTER COLOR METAL HALIDE

MSRA-3
3LT CDM-T_m MH



TYPE :

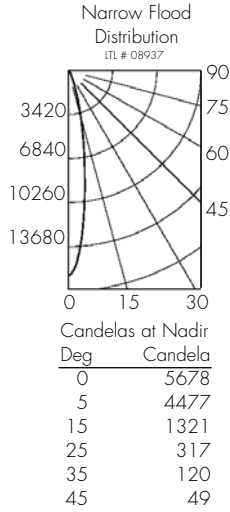
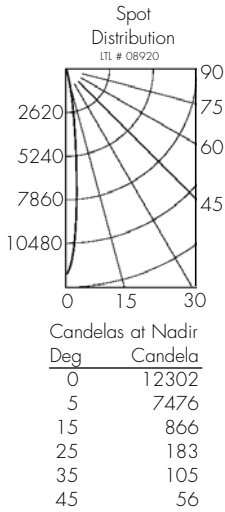


FIXTURE DATA:

Test run with standard clear reflector. For gold, multiply by 0.9
For 39w data, multiply by 1.8

Complete photometric data (.ies format) available upon request.

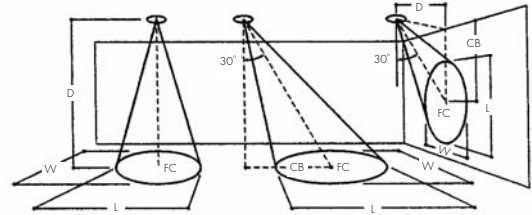
Note: Data is for 1 lamp
20W T_m MH



APPLICATION DATA:

Notes and Definitions:

Beam spread is to 50% center beam candlepower (CBCP).
D=Distance to floor or wall.
FC=Footcandles on floor or wall at center beam aiming location.
L=Effective Visual Beam length in feet (50% of maximum footcandle level).
W=Effective Visual Beam width in feet (50% of maximum footcandle level).
CB=Distance across or down to center beam location.



0° Aiming Angle
Horizontal
Footcandles



30° Aiming Angle
Horizontal
Footcandles



30° Aiming Angle
Vertical
Footcandles



60° Aiming Angle
Vertical
Footcandles

	0° Aiming Angle Horizontal Footcandles					30° Aiming Angle Horizontal Footcandles					30° Aiming Angle Vertical Footcandles					60° Aiming Angle Vertical Footcandles				
	D	FC	L	W	CB	D	FC	L	W	CB	D	FC	L	W	CB	D	FC	L	W	CB
SPOT	5.0'	492	1.2	1.2		5.0'	319	1.4	1.3	2.9	3.0'	186	2.3	1.3	4.8	3.0'	876	0.8	0.7	1.8
	7.5'	218	1.5	1.5		7.5'	133	2.3	1.8	3.9	4.0'	104	3.1	1.6	6.3	4.0'	502	1.2	1.0	2.3
	10.0'	123	2.1	2.1		10.0'	78	2.9	2.6	5.9	5.0'	67	3.9	2.0	7.8	5.0'	320	1.5	1.3	2.7
	12.5'	79	2.8	2.8		12.5'	51	3.5	3.1	6.9	6.0'	46	4.6	2.5	9.7	6.0'	220	1.7	1.5	3.3
NARROW FLOOD	5.0'	227	1.6	1.6		5.0'	147	2.2	1.8	2.9	3.0'	94	3.2	1.8	4.2	3.0'	404	1.3	1.1	1.8
	7.5'	100	2.5	2.5		7.5'	66	3.2	2.8	3.9	4.0'	53	4.3	2.4	5.7	4.0'	231	1.7	1.5	2.3
	10.0'	57	3.2	3.2		10.0'	36	4.4	3.7	5.9	5.0'	34	5.3	3.0	7.2	5.0'	148	2.1	1.8	2.8
	12.5'	36	3.9	3.9		12.5'	24	5.3	4.6	6.9	6.0'	24	6.4	3.4	8.8	6.0'	103	2.5	2.2	3.2