

# CYLINDRIX MODULAR TROUGH 4.75" HOUSING

CMT4-HSG

**APPLICATION:**

Retail, commercial and hospitality accent and display lighting

**MOUNTING:**

For use in sheet rock ceilings

**CONSTRUCTION:**

Extruded aluminum ceiling trim with grooved spackle surface  
Die-formed, cold-rolled steel housing, end plates and internal components  
4 wire 12ga wiring harness with quick connect plugs for easy module attachment

**LABELING:**

cUL listed  
Damp location

**MODULES:**

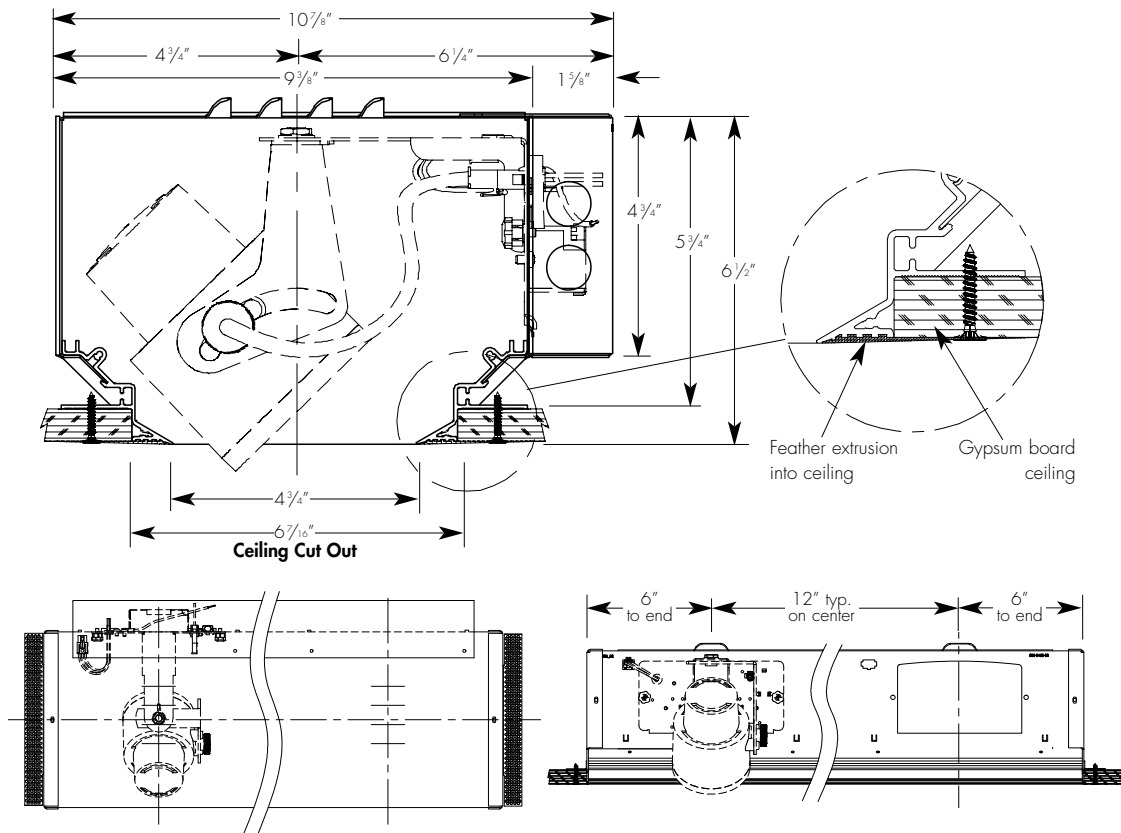
Accepts a variety of CMT4-IM lighting modules, see applicable specification sheets for lighting options

PROJECT:

TYPE:

**ECOTECTURAL**

Architectural lighting for sustainable design.



**ORDERING INFORMATION:**

Model	Module Spacing	Interior Finish	Length
CMT4-HSG	12 24	BT - black texture	— - specify length in 1' increments

Example: CMT4-HSG-12-BT-6

Cat #:

**NOTE:**

Order CMT4 light modules separately.  
See CMT4-IM specification sheets for details.