

# GRUV IIS 1'x4', 1'x5'

2LT T5/T5HO FLUORESCENT, GRID CEILING

GRUV-IIS  
1'x4', 1'x5'  
2LT T5/T5HO

**APPLICATION:**

Retail and commercial recessed high efficiency ambient lighting

**MOUNTING:**

For use in grid ceiling applications as individual or continuous row conditions Compliant with Armstrong Techzone™ and USG Logix™ ceiling systems Please consult factory for any other ceiling condition

**CONSTRUCTION:**

Die-formed, cold-rolled steel reflector, internal components, external housing and end caps

**OPTICS:**

2 T5/T5HO fluorescent lamp  
Formed steel reflector with high reflectance matte white finish  
Amerlux exclusive hybrid diffuse extruded linear prism lens provides excellent transmission while effectively concealing lamp image

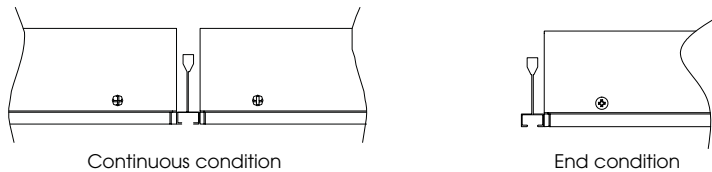
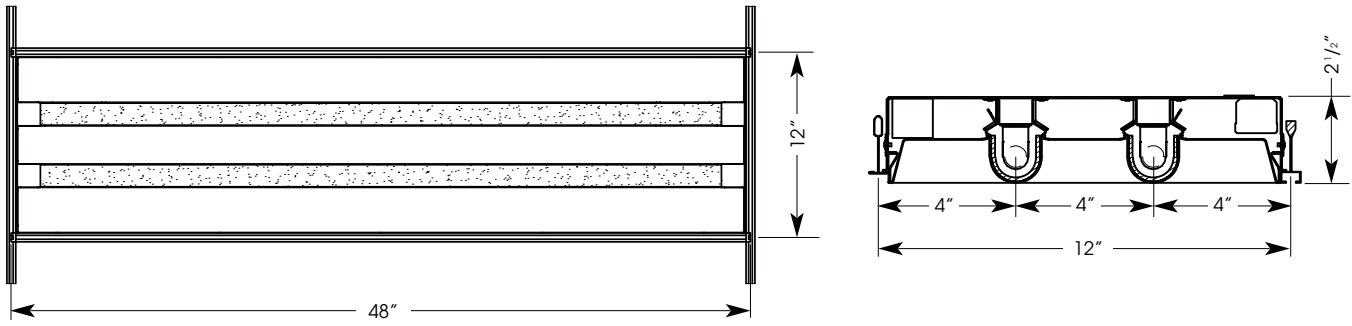
**LABELING:**

cUL listed



PROJECT:

TYPE:



**ELECTRICAL**  
Electronic ballast  
120v-277v

Amerlux reserves the right to change details that do not affect overall function and performance.

**ORDERING INFORMATION:**

Model	Size	# Lamps	Wattage	Lamp Type	Ballast	Finish	Voltage	Ceiling Type	Options/Accessories
GRUV-IIS-GRID	14 - 1'x4'	2	28 54	T5 T5HO	E - electronic	HW - high reflectance matte white	120-277	916S - slot grid 916T - T-grid 1516 - T-grid	DB - dimming ballast EM - emergency battery pack DL - downlight 6" panel PH - photocell 6" panel OC - occupancy sensor 6" panel SP - speaker 6" panel SPR - sprinkler 6" panel A6 - 6" air handling panel PW - 6' power whip MSW - 6' master/slave whip THW - 6' through wiring whip
	15 - 1'x5'	2	35 80	T5 T5HO					
	14P - 1'x4' with end panels	2	21 39	T5 T5HO					
	15P - 1'x5' with end panels	2	28 54	T5 T5HO					

Example: GRUV-IIS-GRID-14-2-28-T5-E-HW-120-277-916S

Cat #:

# GRUV IIS 1'x4', 1'x5'

2LT T5/T5HO FLUORESCENT, GRID CEILING

GRUV-IIS  
1'x4', 1'x5'  
2LT T5/T5HO



TYPE:

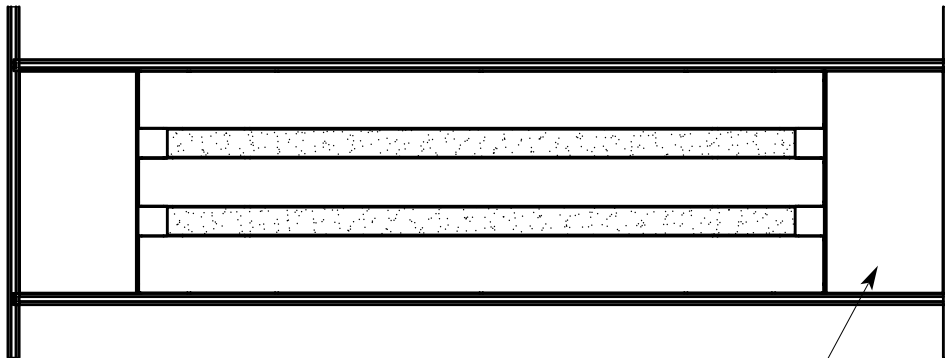
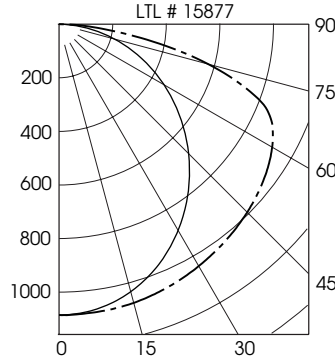
**PHOTOMETRIC DATA:**

GRUV-IIS 2 28W T5 FLUORESCENT  
Lamp: Sylvania FP28/835 Lamp Lumens: 2610  
Recessed

**ZONAL LUMEN SUMMARY**

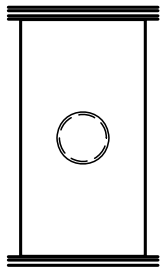
Zone	Lumens	%Lamp	%Fixt
0-30	863	16.5	21.6
0-40	1444	27.7	36.1
0-60	2758	52.8	69.0
0-90	3996	76.6	100.0
90-180	0	0.0	0.0
0-180	3996	76.6	100.0

**Total Luminaire Efficiency = 76.6%**



GRUV-IIS with 6" panels uses 3' lamps for 1x4 and 4' lamps for 1x5

Panels to integrate architectural system (see details)



Sprinkler cover plate w/hole, size and shape may vary (sprinkler by others)

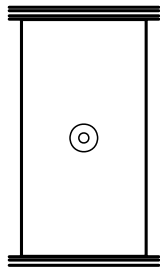
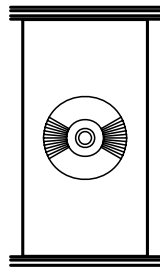
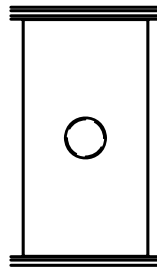


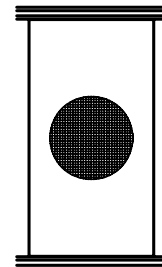
Photo sensor plate w/hole, size and shape may vary (sensor by others)



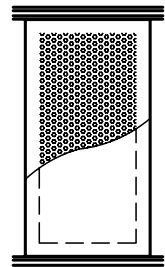
Occupancy sensor plate w/hole, size and shape may vary (sensor by others)



MR16 downlight cover plate w/hole



Speaker plate w/hole, size and shape may vary (speaker by others)



Blank cover plate or air return