

# GRUV IIS 6"x4', 6"x5'

1LT T5/T5HO FLUORESCENT, GRID CEILING

GRUV-IIS  
6"x4', 6"x5'  
1LT T5/T5HO



**APPLICATION:**

Retail and commercial recessed high efficiency ambient lighting

**CONSTRUCTION:**

Extruded aluminum reflector  
Die-cast end caps  
Die-formed, cold-rolled steel internal components and external housing

**OPTICS:**

1 T5/T5HO fluorescent lamp  
Extruded aluminum reflector with high reflectance matte white finish  
Amerlux exclusive hybrid diffuse extruded linear prism lens provides excellent transmission while effectively concealing lamp image

**MOUNTING:**

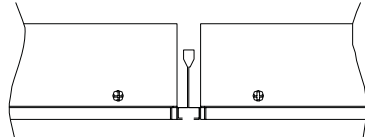
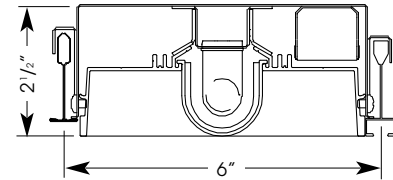
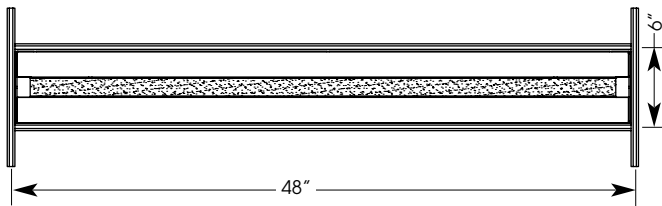
For use in grid ceiling applications as individual or continuous row conditions  
Compliant with Armstrong Techzone™ and USG Logix™ ceiling systems  
Please consult factory for any other ceiling condition

**LABELING:**

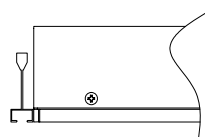
cUL listed



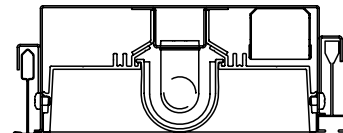
PROJECT:  
  
TYPE:



Continuous condition



End condition



T-Grid flush mounting option

**ELECTRICAL**

Electronic ballast  
120v-277v

Amerlux reserves the right to change details that do not affect overall function and performance.

**NOTE:**

See diagrams on back side for other middle and end panel options

**ORDERING INFORMATION:**

Model	Size	Wattage	Lamp Type	Ballast	Finish	Voltage	Ceiling Type	Options/Accessories
GRUV-IIS-GRID	64 - 6"x4'	28 54	T5 T5HO	E - electronic	HW - high reflectance matte white	120-277	916S - slot grid 916T - T-grid 916TF - T-grid flush mount 1516 - T-grid	DB - dimming ballast EM - emergency battery pack DL - downlight 6" panel PH - photocell 6" panel OC - occupancy sensor 6" panel SP - speaker 6" panel SPR - sprinkler 6" panel A6 - 6" air handling panel PW - 6' power whip MSW - 6' master/slave whip THW - 6' through wiring whip
	65 - 6"x5'	35 80	T5 T5HO					
64P - 6"x4' with end panels	65P - 6"x5' with end panels	21 39	T5 T5HO	E - electronic	HW - high reflectance matte white	120-277	916S - slot grid 916T - T-grid 916TF - T-grid flush mount 1516 - T-grid	DB - dimming ballast EM - emergency battery pack DL - downlight 6" panel PH - photocell 6" panel OC - occupancy sensor 6" panel SP - speaker 6" panel SPR - sprinkler 6" panel A6 - 6" air handling panel PW - 6' power whip MSW - 6' master/slave whip THW - 6' through wiring whip
		28 54	T5 T5HO					

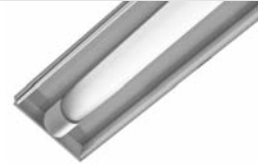
Example: GRUV-IIS-GRID-28-T5-E-HW-120-277-916S

Cat #:

# GRUV IIS 6"x4', 6"x5'

1LT T5/T5HO FLUORESCENT, GRID CEILING

GRUV-IIS  
6"x4', 6"x5'  
1LT T5/T5HO



**amerlux**  
GLOBAL LIGHTING SOLUTIONS

TYPE:

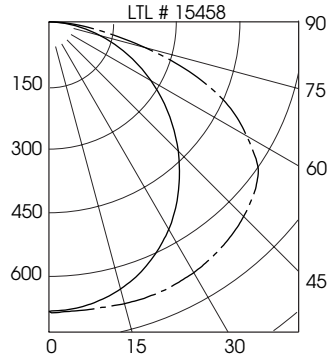
**PHOTOMETRIC DATA:**

GRUV-IIS 1 39W T5HO FLUORESCENT  
Lamp: Philips F39T5/835/HO/ALTO Lamp Lumens: 3080  
Recessed

**ZONAL LUMEN SUMMARY**

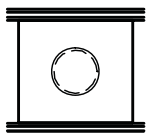
Zone	Lumens	%Lamp	%Fixt
0-30	551	17.9	22.6
0-40	929	30.2	38.1
0-60	1780	57.8	73.0
0-90	2436	79.1	100.0
90-180	0	0.0	0.0
0-180	2436	79.1	100.0

**Total Luminaire Efficiency = 79.1%**



GRUV-IIS with 6" panels uses 3' lamps for 6"x4' and 4' lamps for 6"x5'

Panels to integrate architectural system (see details)



Sprinkler cover plate w/hole, size and shape may vary (sprinkler by others)

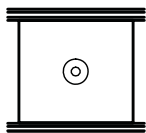
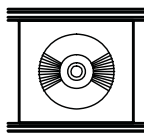
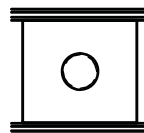


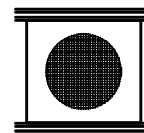
Photo sensor plate w/hole, size and shape may vary (sensor by others)



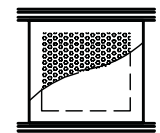
Occupancy sensor plate w/hole, size and shape may vary (sensor by others)



MR16 downlight cover plate w/hole



Speaker plate w/hole, size and shape may vary (speaker by others)



Blank cover plate or air return