

**PROJECT:**
**TYPE:**
**Features**

The FINCH® family of cylinders with a 1" aperture, features exceptional output, flexibility, and a broad range of configurations to provide discreet quality illumination while integrating into the architecture. It is available in a fixed downlight, adjustable (*with 50° tilt*), wall mount and even exterior ground mount options. Whether installed on ceilings, walls/mullions or the ground, the FINCH® family blends seamlessly into its surroundings.

The ground mount fixture, offers over 900 lumens for use in landscape applications. Fully sealed against the elements, this adjustable fixture includes a weatherproof tethered wiring box with the driver inside to make connections to a 12VAC landscape transformer (*by others*). This elegant cylinder offers a wide range of field replaceable optics to provide the desired effects. Also available are optional accessories like a hexcell louver or optical films.


**FINxX-GM**
**Product Overview**

Type: Exterior Ground Mount, Adjustable  
 Wattage: 6W, 8W, 10W  
 Color Temp: 2400K, 2700K, 3000K, 3500K, 4000K  
 CRI: 80+ & 90+ typ.

**Certifications**


**5** year limited  
 warranty  
 AMERLUX LED

**Fixture Summary**
**Performance Data**





Watts	Delivered Lumens	LPW	Color Temp	CRI
6	643	102.1	3000K	80+
8	787	93.7	3000K	80+
10	927	88.3	3000K	80+

*Data is based on flood optic, 3000K, 80+ 120V IES file available on website.*

PROJECT:

TYPE:

## Ordering Information

1	2	3	4	5	6	7	
1	Model	2	Wattage	3	Color Temp and CRI	4	Beam Spread
	FIN3X-GM 3"	6	6W (643 lm)	30	3000K, 80+	SP	spot 15°
	FIN6X-GM 6"	8	8W (787 lm)	35	3500K, 80+	FL	flood 28°
	FIN9X-GM 9"	10	10W (927 lm)	40	4000K, 80+	WF	wide flood 35°
	FIN12X-GM 12"			249	2400K, 90+	VWF	very wide flood 50°
	FIN18X-GM 18"			279	2700K, 90+		
				309	3000K, 90+		
				359	3500K, 90+		
				409	4000K, 90+		
5	Body Finish	6	Door Style	7	Accessories		
	TBK textured black 		SBX standard bevel exterior		SOL solite lens		
	BLK matte black 		VBX visor bevel exterior		HEX hexcell louver		
	BRZ bronze 				LS linear spread lens		
	DBZ dark bronze 						
	For custom RAL finish, consult factory						

## Specifications

### Application

Exterior accent lighting

### Construction

Extruded aluminum precision machined body, door &amp; heatsink

### Optical

TIR optics

 Beam Spreads: Spot 15°, Flood 28°, Wide Flood 35°,  
 Very Wide Flood 50°

### LED

Color Temp: 2400K, 2700K, 3000K, 3500K, 4000K

CRI: 80+ &amp; 90+ typ.

R9 Values: 11 (83 CRI), 55 (92 CRI)

Binning: 3 MacAdam (SDCM)

Life: 50,000+ hrs, &gt; 70% of initial lumens at 50,000 hrs

### Electrical

Wattage: 6W, 8W, 10W

### Drivers

12VAC input driver located in remote tethered junction box

### Finish

Powder coat paint

*Consult factory for custom finishes*

### Mounting

Ground (stake) mount

### Certifications

CSA tested to UL standards

Wet location

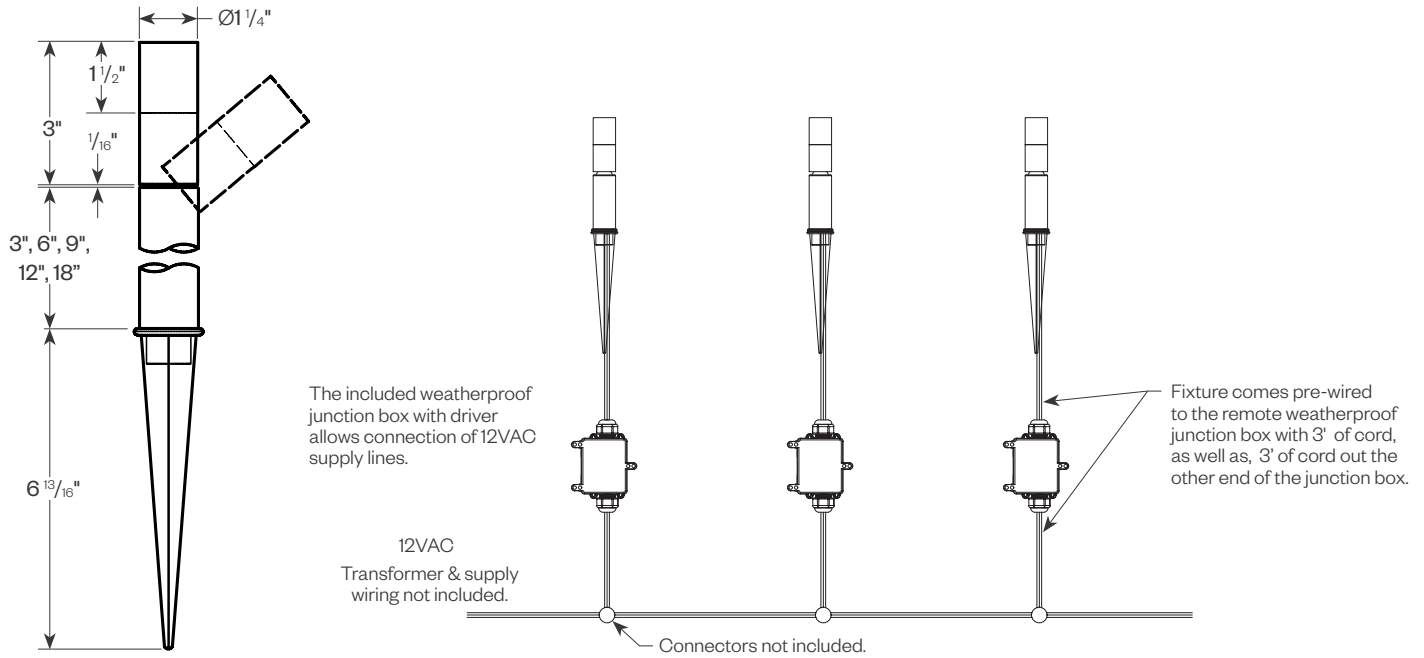
### Warranty

5 year limited warranty

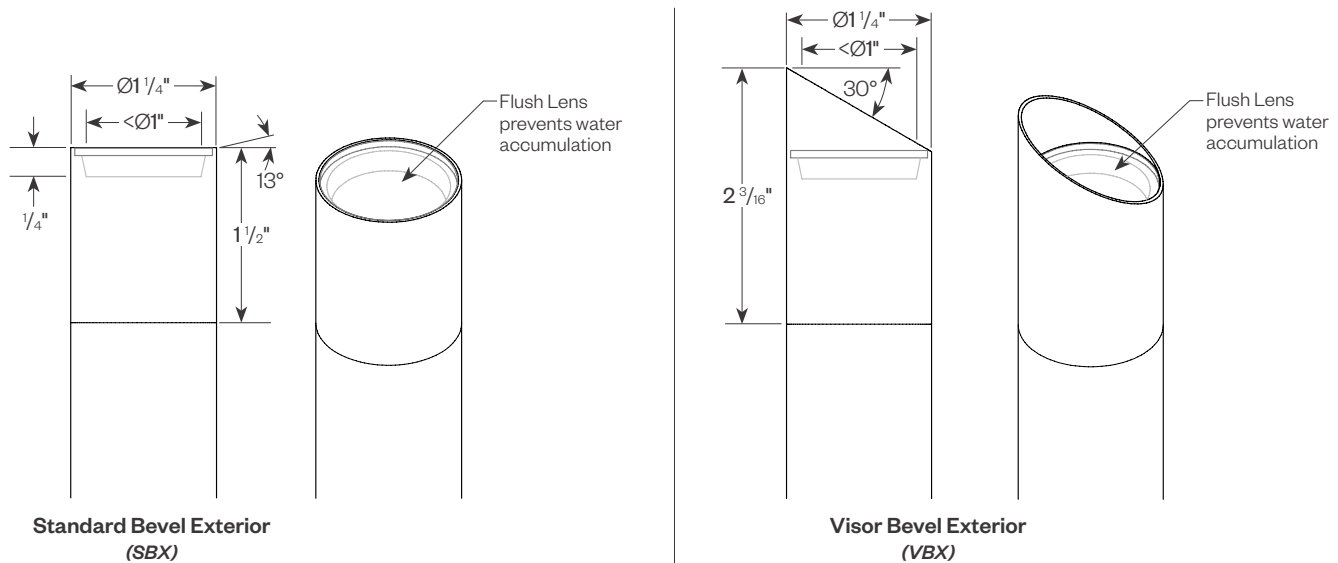
PROJECT:

TYPE:

### Product Details



### Door Styles



### Finishes

Powder coat paint.

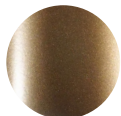
Consult factory for custom finishes.



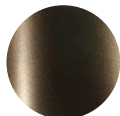
Textured Black



Matte Black



Bronze



Dark Bronze

**PROJECT:**
**TYPE:**

## Performance Data

**Multiplying Factors:** (Multiplying Factor is based on 3000K, 80+, 120V IES file on website)

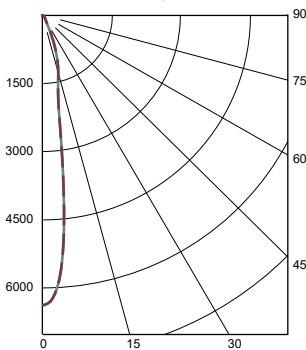
Wattage:	6W	8W	10W	20W*
Factor:	0.44	0.54	0.64	1.0

\* Multiplying factors based on IES 20W tested fixture.  
 20W is not available for this fixture type.

CCT:	3000K, 80+	3500K, 80+	4000K, 80+	2400K, 90+	2700K, 90+	3000K, 90+	3500K, 90+	4000K, 90+
Factor:	1.0	1.04	1.06	0.76	0.83	0.88	0.92	0.93

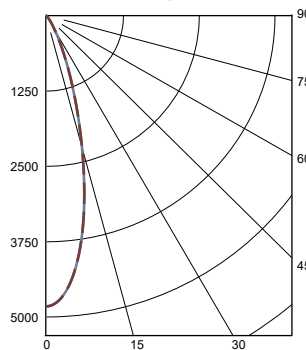
### 20W, 3000K, 80+

**Spot Distribution**  
 LTL # 14815215.01A  
 Lumens: 1130; lm/W: 57.3



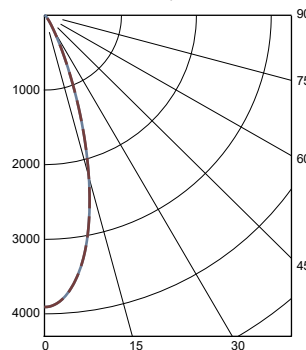
Candelas at Nadir	
Deg	Candela
0	6385
5	5036
15	1276
25	354
35	112
45	75

**Flood Distribution**  
 LTL # 14815215.02A  
 Lumens: 1459; lm/W: 73.9



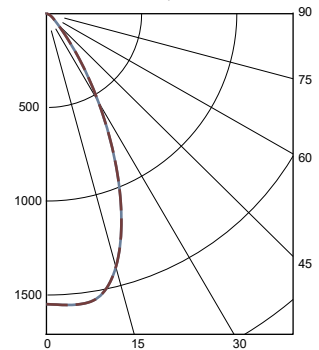
Candelas at Nadir	
Deg	Candela
0	4821
5	4439
15	2154
25	608
35	155
45	52

**Wide Flood Distribution**  
 LTL # 14815215.03A  
 Lumens: 1430; lm/W: 72.5



Candelas at Nadir	
Deg	Candela
0	3908
5	3714
15	2269
25	632
35	144
45	46

**Very Wide Flood Distribution**  
 LTL # 14815215.04A  
 Lumens: 1241; lm/W: 62.9



Candelas at Nadir	
Deg	Candela
0	1549
5	1558
15	1394
25	821
35	303
45	90

## Application Data

### Notes and Definitions:

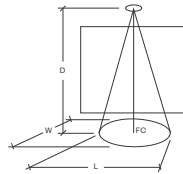
Beam spread is to 50% center beam candlepower (CBOP).

**D**=Distance to floor or wall.

**FC**=Footcandles on floor or wall at center beam aiming location.

**L**=Effective Visual Beam length in feet (50% of maximum footcandle level).

**W**=Effective Visual Beam width in feet (50% of maximum footcandle level).



### Spot

0° Aiming Angle  
 Horizontal  
 Footcandles

D	FC	L	W
5.0'	158	1.9	1.9
7.5'	91	2.5	2.5
10.0'	57	3.0	3.0
12.5'	38	3.5	3.5

### Flood

0° Aiming Angle  
 Horizontal  
 Footcandles

D	FC	L	W
5.0'	178	2.6	2.6
7.5'	85	3.6	3.6
10.0'	49	4.7	4.7
12.5'	31	5.8	5.8

### Wide Flood

0° Aiming Angle  
 Horizontal  
 Footcandles

D	FC	L	W
5.0'	138	3.0	3.0
7.5'	66	4.3	4.3
10.0'	38	5.6	5.6
12.5'	25	7.0	7.0

### Very Wide Flood

0° Aiming Angle  
 Horizontal  
 Footcandles

D	FC	L	W
5.0'	61	4.2	4.2
7.5'	27	6.3	6.3
10.0'	16	8.4	8.4
12.5'	10	10.6	10.6