

D480 Series

HID Luminaire



Features

Lighting for exterior retail, commercial and hospitality environments. The D480 Series is a large scale traditionally styled 8 sided lantern combined with one of several styles of cast aluminum fitters.

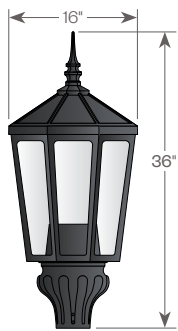
Product Overview

Wattage: 70W, 100W, 150W (MH)
70W, 100W, 150W (HPS)



PROJECT:

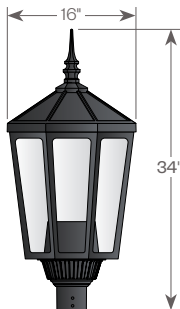
FINISH:



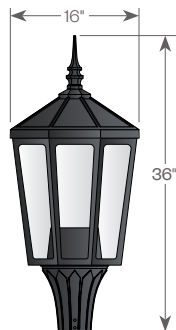
D481
EPA: 2.19



D484
EPA: 2.35



D485
EPA: 2.09



D486
EPA: 2.14

PRODUCT DISCONTINUED
Replacement Product:
D480 LED (AVI-G3) Luminaire

Installation:

The luminaire will mount to a 1/2" post or tenon with 5/16" black oxide coated stainless steel set screws to ensure a solid connection.

Electrical:

- High power factor ballast (HPF), core and coil type, pre-wired and tested
- Easy ballast pod access
- 4KV pulse rated porcelain socket

Lenses:

- Clear Acrylic (CA)
- Textured Acrylic (TA)

Finish:

Durable thermoset polyester powdercoat finish in the following:

- Satin Black (BLK)
- Classic Bronze (CLB)
- Gloss Textured Bronze (GBZ)
- Green (GRN)
- Gloss Textured Black (GTB)
- Textured Black (TBK)
- Gloss Textured Green (TGR)

Accessories:

- 90 degree house-side shield (HSS-90)
- 180 degree house-side shield (HSS-180)
- Dusk-to-dawn button type photocell (PCL)

ETL listed, suitable for wet locations.



Standard



with FDR

D480 Series

HID Luminaire



PROJECT:

TYPE:

Ordering Information

1	2	3*	4	5	6	7*
----------	----------	-----------	----------	----------	----------	-----------

* Leave blank if not selected

Add additional accessories as needed

- | | |
|--|--|
| 1 <u>Model</u>
D481
D484
D485
D486 | 6 <u>Finish</u>
BLK - Satin Black
CLB - Classic Bronze
GBZ - Gloss Textured Bronze
GRN - Green
GTB - Gloss Textured Black
TBK - Textured Black
TGR - Gloss Textured Green
CSTM - Custom |
| 2 <u>Lens</u>
CA - Clear Acrylic
TA - Textured Acrylic | 7 <u>Accessories</u>
HSS-90 - 90° House Side Shield
HSS-180 - 180° House Side Shield
PCL - Dusk-to-dawn button type photocell |
| 3 <u>Optical Option (not required)</u>
L3 - Type 3 Refractor
L5 - Type 5 Refractor
FDR - Faceted Downlight Reflector | |
| 4 <u>Light Source</u>
70MH - 70W Metal Halide
100MH - 100W Metal Halide
150MH - 150W Metal Halide
70HPS - 70W High Pressure Sodium
100HPS - 100w High Pressure Sodium
150HPS - 150W High Pressure Sodium
MDO - Medium Socket Only
MGO - Mogul Socket Only | |
| 5 <u>Voltage</u>
120V
208V
240V
277V | |

Finish

D480 Series

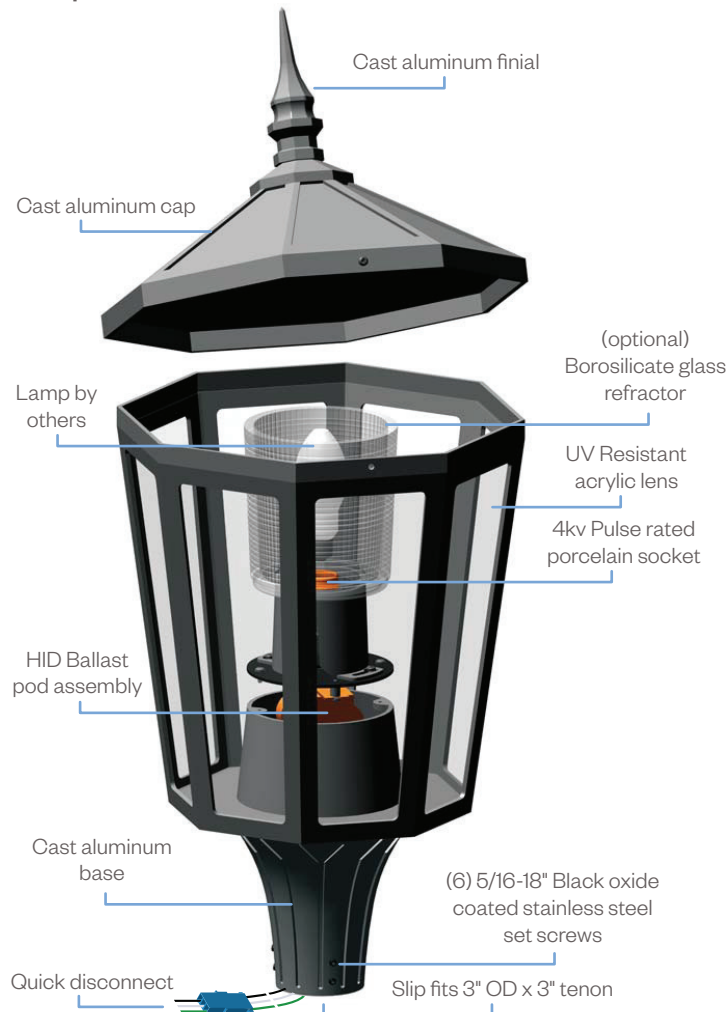
HID Luminaire



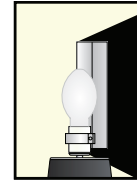
PROJECT:

TYPE:

Assembly Details (Example: D480(CA)/L5)



Options



HSS90 & HSS180
House Side Shield
for use with
Optical Systems

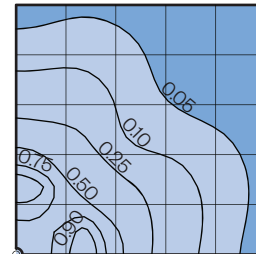


FDR
Faceted
Downlight
Reflector



L3 or L5
Type III or
Type V
Glass Refractor

Photometry



Typical HID light source
14,000 Lumens
12' Mounting Height
Grid Spacing is 12'

Socket Types

Wattage	Socket Type
70MH, 100MH, 150MH	Medium
70HPS, 100HPS	Medium
150HPS	Mogul