

DPS

Downlight Pendant - Small, 18" LED Luminaire



PROJECT:

TYPE:

Features

Improved performance, directional control, and efficacy allows this newest generation of the DPS to accommodate needs in the strictest environments. Multiple shade styles make this luminaire suitable for a wide variety of decorative applications, and the improved optics allow it to be used where Dark Sky luminaire requirements are in place.

Product Overview

Wattage: 43W, 49W, 63W, 70W
Lumen Output: 10,294 lm (70W, T3, 4000K)
Color Temp: 3000K*, 4000K
Dimming: 0-10V dimming

* IDA Dark Sky approved in 3000K only



Certifications



5 year limited warranty
AMERLUX LED

POWDER COATED TOUGH



Certain Restrictions Apply for DarkSky International

Fixture Summary

Installation:

The luminaire will mount to the bracket. Post top luminaire brackets will mount to a 3" OD post or tenon with (6) 5/16" stainless steel set screws. Wall bracket models have four 3/8" holes for mounting (*wall mount hardware is not included*).

Construction:

- Cast aluminum housing
- Spun aluminum shade

Optics:

The luminaire utilizes IP66 sealed optical modules consisting of a high performance LED board with an acrylic (TIR) lens to deliver maximum spacing and uniformity. A choice of Type II, Type III, Type IV, or Type V, IES distributions are available with the scalability to meet application criteria. Custom configurations available.

Driver:

Convection cooled driver with electronic constant current operation with over voltage and short circuit protection. Automatic voltage sensing for 120V to 277V input. 0-10V dimming.

Finish:

Durable thermoset polyester powdercoat finish in the following:

- Satin Black
- Classic Bronze
- Gloss Textured Bronze
- Green
- Gloss Textured Black
- Textured Black
- Gloss Textured Green

Accessories:

- Backlight Shield
- Wireless control option

ETL listed, suitable for wet locations.

PROJECT:

TYPE:

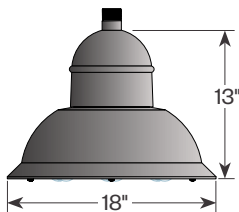
Ordering Information - Fixture

1	2	3	4	5	6	7
1 Model	2 LED Modules	3 Light Distribution	4 Color Temp	5 Power Level	6 Finish	7 Options/Accessories
DPS-1D	2M 2 modules	T2 Type II	30* 3000K	530M	BLK satin black	
DPS-2D	3M 3 modules	T3 Type III	40 4000K	600M	CLB classic bronze	
DPS-3D		T4 Type IV	*IDA DarkSky International approved in 3000K only.		GBZ gloss textured bronze	
DPS-4D		T5 Type V			GRN green	
					GTB gloss textured black	
					TBK textured black	
					TGR gloss textured green	
					CSTM custom	
7 Options/Accessories						
BLS backlight shield (T2, T3 & T4 distributions only)						
SSINT-1 integrated wireless control node (for operation on the SmartSite control platform)						

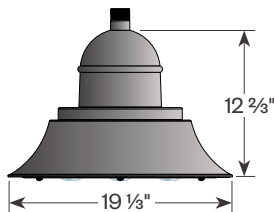
Ordering Information - Mounting (see pg 3 for details)

1	2
1 Model	2 Finish
PT01 pendant crook, single arm	BLK satin black
PT12 pendant crook, double arm	CLB classic bronze
WBR03 wall bracket	GBZ gloss textured bronze
WBR06-13PM wall bracket with 13" extension arm	GRN green
WBR06-15PM wall bracket with 15" extension arm	GTB gloss textured black
CBR40-1-24-S pendant bracket, single arm, 24"	TBK textured black
CBR40-2-24-S pendant bracket, double arm, 24" each arm	TGR gloss textured green
	CSTM custom

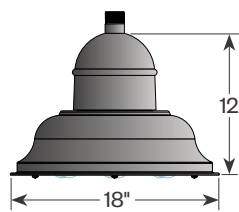
Product Details



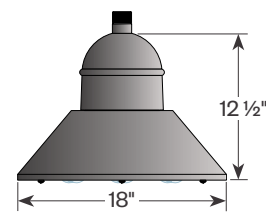
DPS-1D
EPA: 0.72
Wt: 14 lbs



DPS-2D
EPA: 0.68
Wt: 14 lbs



DPS-3D
EPA: 0.67
Wt: 14 lbs

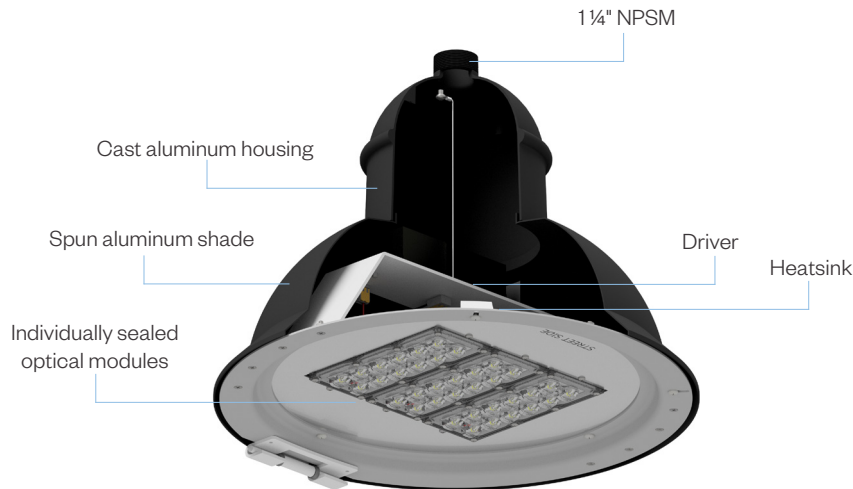


DPS-4D
EPA: 0.69
Wt: 14 lbs

PROJECT:

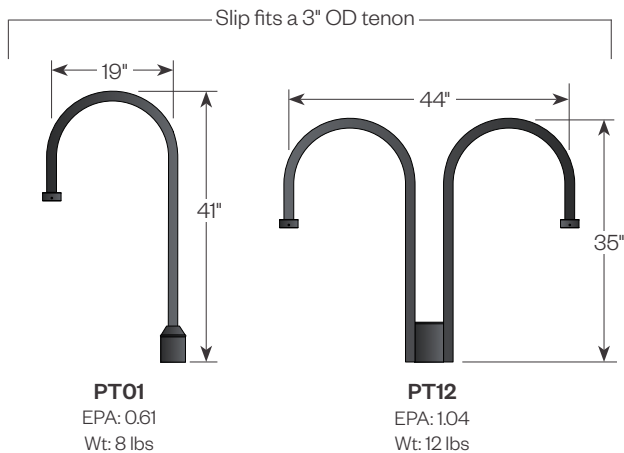
TYPE:

Product Details - Assembly

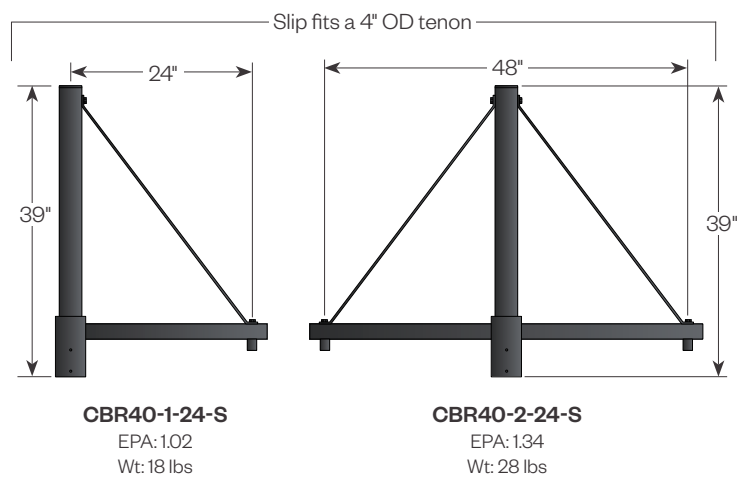


Mounting Options

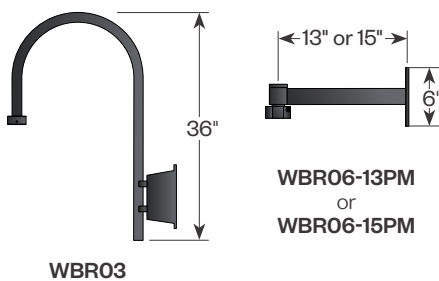
Pendant Crooks



Pendant Brackets



Wall Brackets



PROJECT:

TYPE:

Power

LED Modules	2M		3M	
Power	43W	49W	63W	70W
Amperage Draw @ 120V (A)	0.36	0.41	0.53	0.58
Amperage Draw @ 277V (A)	0.16	0.18	0.23	0.25

Performance Data

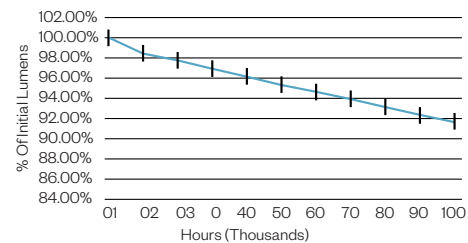
Modules	System Watts	Distribution	CCT	Luminaire Lumens		BUG Rating
				530mA	600mA	
2M	43W (530mA) 49W (600mA)	T2	3000K	5981	6501	1-0-1
			4000K	6340	6891	
		T3	3000K	6093	6623	
			4000K	6459	7020	
		T4	3000K	5795	6299	1-0-2
			4000K	6143	6677	
		T5	3000K	5966	6485	3-0-1
			4000K	6324	6874	
3M	63W (530mA) 70W (600mA)	T2	3000K	8769	9532	2-0-2
			4000K	9295	10104	
		T3	3000K	8934	9711	
			4000K	9470	10294	
		T4	3000K	8497	9236	
			4000K	9007	9790	
		T5	3000K	8748	9509	3-0-2
			4000K	9273	10080	

Lumen Maintenance

Ambient Temp	50,000 Hours*	70,000 Hours*	90,000 Hours*	100,000 Hours*	Theoretical L70 Hours
25°C	>95.4%	>93.9%	>92.4%	>91.6%	>200,000

* Per IESNA TM-21 data.

Lumen maintenance values apply to all output levels and distributions.

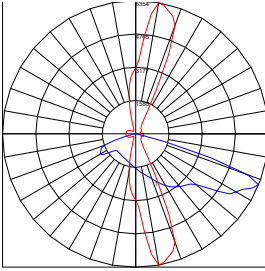


PROJECT:

TYPE:

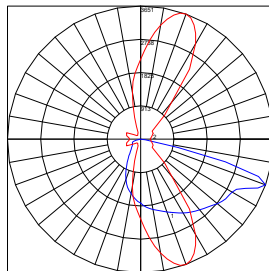
Typical Light Distributions

DPS-xD-2M-T2-30-600M



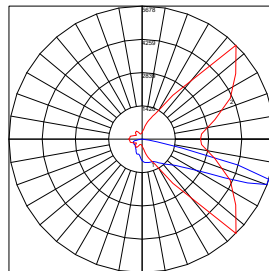
Typical T2 Polar Plot

DPS-xD-2M-T3-30-600M



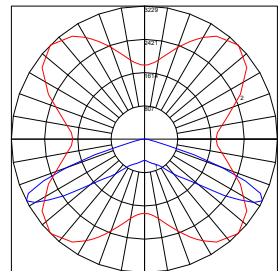
Typical T3 Polar Plot

DPS-xD-2M-T4-30-600M

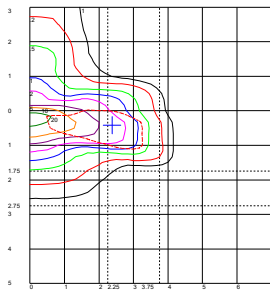


Typical T4 Polar Plot

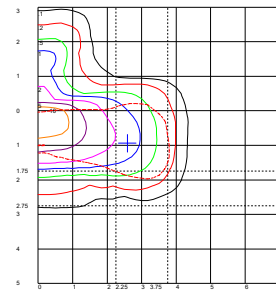
DPS-xD-2M-T5-30-600M



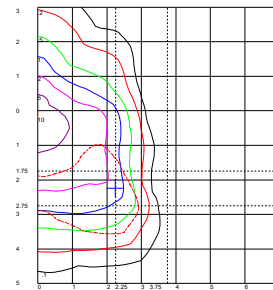
Typical T5 Polar Plot



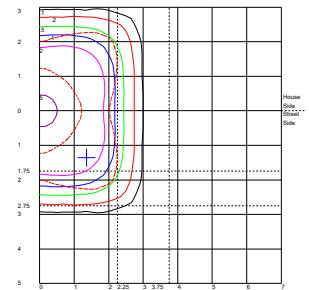
Typical T2 Isolines



Typical T3 Isolines



Typical T4 Isolines



Typical T5 Isolines

Backlight Shield (BLS)

Shield can be easily installed in the field when required.

