

# INSTRUCTION SHEET



689-9011

PAGE 1 OF 1

**WARNING** - RISK OF FIRE AND ELECTRICAL SHOCK. FIXTURE MUST BE INSTALLED BY A QUALIFIED ELECTRICIAN ONLY. FIXTURE IS INTENDED FOR INSTALLATION IN ACCORDANCE WITH THE NATIONAL ELECTRICAL CODE, LOCAL AND FEDERAL SPECIFICATIONS. DISCONNECT POWER AT ELECTRICAL PANEL BEFORE SERVICING.

## RETAIN THESE INSTRUCTIONS FOR MAINTENANCE REFERENCE.

### TOOLS REQUIRED:

1. Hex wrench set
2. Channel lock pliers
3. Phillips screwdriver
4. Appropriate wire connectors (Consult electrical codes)

### STEPLIGHT Hollow (Stud) Wall INSTALLATION

1. Ensure power is turned off to the luminaire connection point.
2. Install the (2) slotted mounting brackets provided (Diagram 1), using the (4) 6-32 screws.

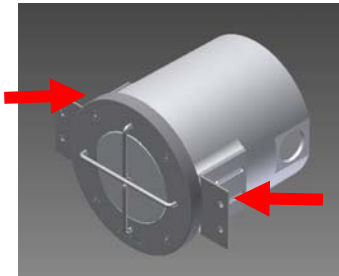


Diagram 1

3. Adjust the brackets (screws) so that the front face of the back box will be flush or slightly in front of the finished wall surface after installation.
4. Orient fixture housing as directed on label. Failure to do so will result in faceplate not installing properly.
5. Secure the mounting brackets to wood or metal blocking (hardware by others).
6. Connect conduit to back housing using Teflon tape on conduit. Pull wires into back housing for electrical connections to be made later.
7. Install splatter guard securely and finish wall.
8. Place a small bead of silicone between edge of housing and wall to provide a seal.

### STEPLIGHT BRICK WALL INSTALLATION

1. Ensure power is turned off to the luminaire connection point.
2. Install the (2) slotted mounting brackets provided (Diagram 2), using the (2) Pem studs and wingnuts.

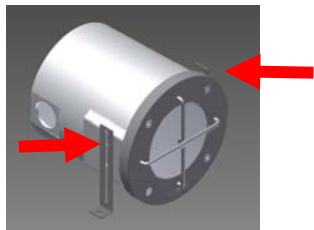


Diagram 2

3. Adjust the brackets vertically for optimal gap spaces between upper and lower brick surfaces and back housing.
4. Orient fixture housing as directed on label. Failure to do so will result in faceplate not installing properly.
5. Secure the mounting brackets to the top of the brick (hardware by others) so that the front face of the back box will be flush or slightly in front of the finished wall surface after installation.
6. Connect conduit to back housing using Teflon tape on conduit. Pull wires into back housing for electrical connections to be made later.

7. Install splatter guard securely and finish wall.
8. Place a small bead of silicone between edge of housing and wall to provide a seal.
9. Before continuing, remove splatter guard and debris from sealing surface.

### STEPLIGHT POURED CONCRETE INSTALLATION

1. Ensure power is turned off to the luminaire connection point.
2. Install (4) threaded 10-24 rods (supplied) in face of the back housing. Hand tighten until secure. (Diagram 3)

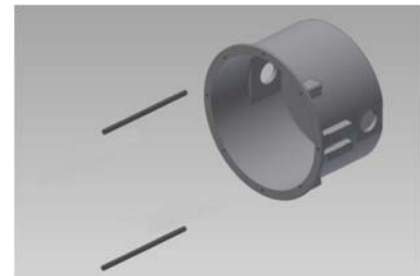


Diagram 3

3. Install splatter guard to protect during construction.
4. Attach back housing to form using (4) wing nuts provided so that the front face of the back housing will be flush or slightly in front of the finished surface.
5. Orient fixture housing as directed on label. Failure to do so will result in faceplate not installing properly.
6. Connect conduit to back housing using 1/2" NPT fitting with Teflon tape on conduit or back housing threads. Pull wires into back housing for electrical connections to be made later.
7. Pour concrete. **NOTE: DO NOT PUMP OR DROP CONCRETE DIRECTLY ON TOP OF THE BACK HOUSING.**
8. Remove the wing nuts and threaded rods before removing form. **IMPORTANT: FULLY UNTHREAD AND REMOVE MOUNTING RODS FROM BACK HOUSING. DO NOT CUT OR SHEAR MOUNTING RODS AS THIS MAY COMPROMISE FACEPLATE SEAL TO THE BACK HOUSING.**
9. Place a small bead of silicone between edge of housing and wall to provide a watertight seal.

### STEPLIGHT INSTALLATION

1. Ensure power is turned off to the luminaire connection point.
2. Before continuing, remove splatter guard and debris from sealing surface.
3. Orient optical housing as directed on labels, to ensure proper light distribution.
4. Make supply wiring connections to gear tray wires. The **BLACK** wire is the **MAIN LINE POWER** connected to the **BLACK (LINE)** of the Power Supply, the **WHITE** wire is **COMMON (or NEUTRAL)** connected to **WHITE (NEUTRAL)** wires of the Power Supply and the **GREEN** wire is **GROUND**.
5. Install optical housing in the back housing using (4) 6-32 screws.
6. Place a small bead of silicone between edge of housing and wall to provide a seal. (**NOTE: only silicone the top and sides, DO NOT SILICONE BOTTOM**)