

# Passo SQ

## 4" Prismatic Glass LED Recessed Wall Luminaire



PROJECT:

TYPE:

### Features

The Passo family of luminaires includes high quality, architecturally relevant fixtures suitable for use in both outdoor or indoor applications. All members of the Passo family feature an independently sealed optical chamber and fully potted driver. These features are especially beneficial in exterior applications as they help compensate for the challenges in getting a good seal between a pre-installed back box and the faceplate as well as those challenges in fully sealing the conduit system. Each luminaire is available in a choice of three output levels to help tailor the desired illuminance to the project and a standard 0-10V dimmable driver allows even further flexibility.



### Product Overview

Type: Recessed Wall Luminaire  
Wattage: up to 5.4W  
Lumen Output: up to 143 lm  
Color Temp: 2700K, 3000K, 4000K  
Dimming: 0-10V

### Certifications



### Fixture Summary

#### Application:

Designed for new construction in interior or exterior hollow walls or poured concrete.

#### Construction:

- Die-cast aluminum housing with protective powdercoat finish
- Sealed die-cast aluminum internal optical chamber
- Die-cast aluminum faceplate
- 1/8" tempered prismatic glass lens

#### Driver:

- Drive current (100, 175 or 350mA)
- 2.5kV surge protection
- Fully potted
- Input voltage 120V-277V auto-sensing
- 0-10V dimmable down to 10%

#### Optics:

Individually sealed optical chamber insures LEDs are secure independent of the installation of the back box.

#### Finish:

Premium quality thermoset polyester powdercoat faceplate for a durable finish.

**ETL listed, suitable for wet locations.**

<b>PROJECT:</b>	<b>TYPE:</b>
-----------------	--------------

**Ordering Information - Luminaire**

PSCP4 . . . . .

- 1
2
3

1	Model	2 Performance Code	3 Finish
	PSCP4	<b>L27</b> 2700K, 100mA	<b>ANT</b> anthracite gray
		<b>L30</b> 3000K, 100mA	<b>BLK</b> satin black
		<b>L40</b> 4000K, 100mA	<b>CLB</b> classic bronze
		<b>H27</b> 2700K, 175mA	<b>SLV</b> silver
		<b>H30</b> 3000K, 175mA	<b>WHT</b> white
		<b>H40</b> 4000K, 175mA	<b>CSTM</b> custom
		<b>VH27</b> 2700K, 350mA	
		<b>VH30</b> 3000K, 350mA	
		<b>VH40</b> 4000K, 350mA	

**Ordering Information - Back Box**

*Back Box must be ordered for a complete unit, ordered separately.*

SQBX-4

- 1

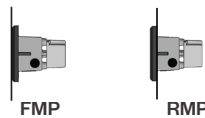
1	Model
	SQBX-4

*Note: Back Box can be shipped ahead of the steplight, upon request.*

**Ordering Information - Optional Adaptor Plate (for retrofit application using an existing wall box or cavity, see pg 4 for details)**

. . . . . X . . . . .

1
2
3
4



1	Model	2 Plate Size	3 Mounting Hole Location	4 Finish
	FMP-PSCP4 front mount adaptor plate RMP-PSCx4 rear mount adaptor plate	<div style="border: 1px solid black; padding: 5px; margin: 0 auto; width: 80%;"> <p style="text-align: center;">X</p> <p style="text-align: center;">(W)                      (H)</p> <p style="text-align: center; margin-top: 5px;"><b>FMP</b></p> <p style="text-align: center;">W: 6" min - 10" max H: 6" min - 10" max</p> <p style="text-align: center; margin-top: 5px;"><b>RMP</b></p> <p style="text-align: center;">W: 6" min - 12" max H: 6" min - 12" max</p> </div>	<b>CRN</b> corner ( <i>1 in each corner</i> )	<b>ANT</b> anthracite gray <b>BLK</b> satin black <b>CLB</b> classic bronze <b>SLV</b> silver <b>WHT</b> white <b>CSTM</b> custom

- Notes:**
1. Back box is NOT used with this optional plate.
  2. A signed approval drawing showing the requested dimensions will be required to process an order.

# Passo SQ

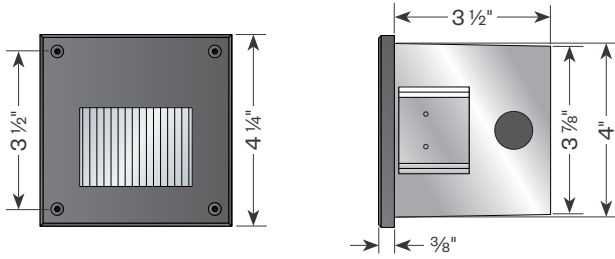
## 4" Prismatic Glass LED Recessed Wall Luminaire



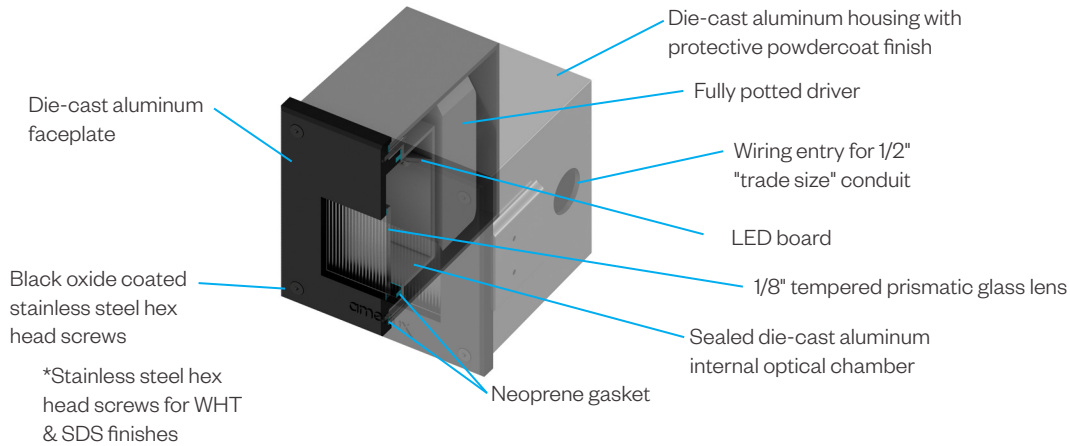
PROJECT:

TYPE:

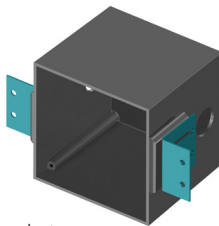
### Product Detail



### Construction Detail



### Application Brackets (included with order)

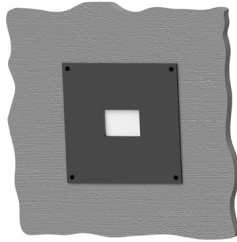


Horizontal Brackets  
(Hollow Wall)

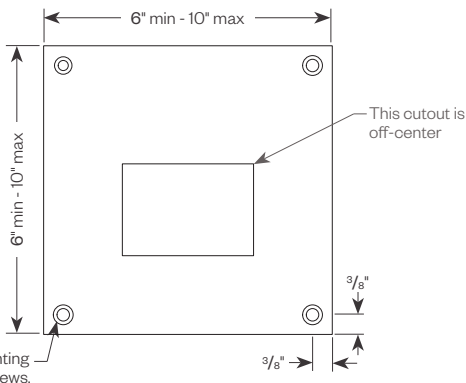
PROJECT:

TYPE:

### Optional Adapter Plate Detail (for retrofit applications using an existing wall box or cavity)



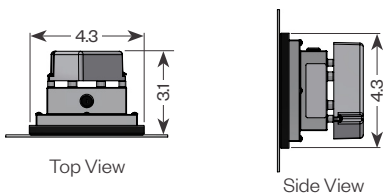
Front Mount Plate (FMP-PSCP4)



Counter sunk mounting holes are for #8 screws.

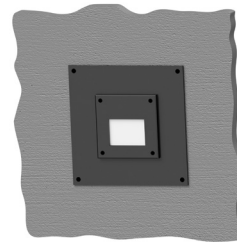
Standard dimensions from the corner are shown. If alternate dimensions are needed, please specify.

Space required to mount fixture.

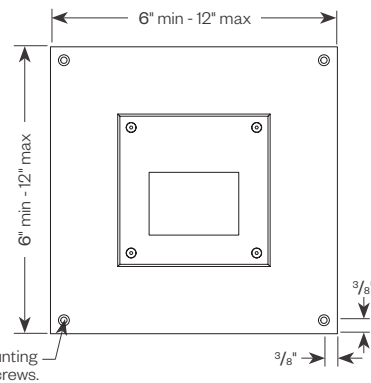


Top View

Side View



Rear Mount Plate (RMP-PSCx4)

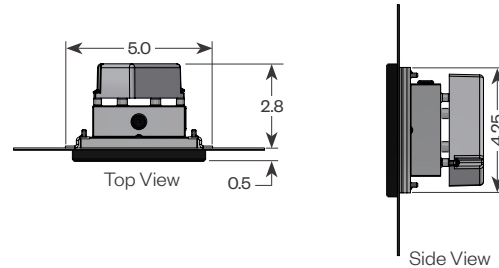


Counter sunk mounting holes are for #8 screws.

Standard dimensions from the corner are shown. If alternate dimensions are needed, please specify.

**EDR Required for dimensions beyond the range shown.**

Space required to mount fixture.



Top View

Side View

### Performance Data

Performance Code	CCT/CRI	Approx. Lumens	Drive Current	Nominal Input Power
L27	2700K/80	57	100mA	1.5W
L30	3000K/80	62		
L40	4000K/70	65		
H27	2700K/80	72	175mA	2.7W
H30	3000K/80	76		
H40	4000K/70	81		
VH27	2700K/80	127	350mA	5.4W
VH30	3000K/80	134		
VH40	4000K/70	143		

Note: IES files available on our website. For VHxx data - use Hxx IES files with a 1.77 multiplier.

### Polar Graph

