

# INSTRUCTION SHEET



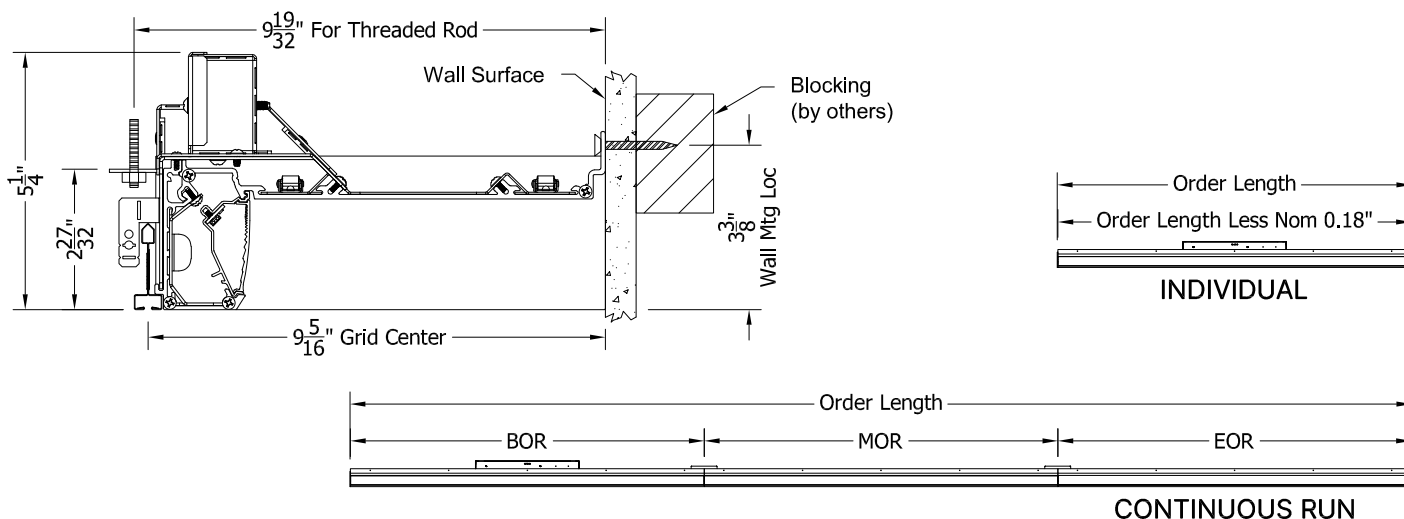
## GCOVE-PW INSTALLATION INSTRUCTIONS

689-LX098-100

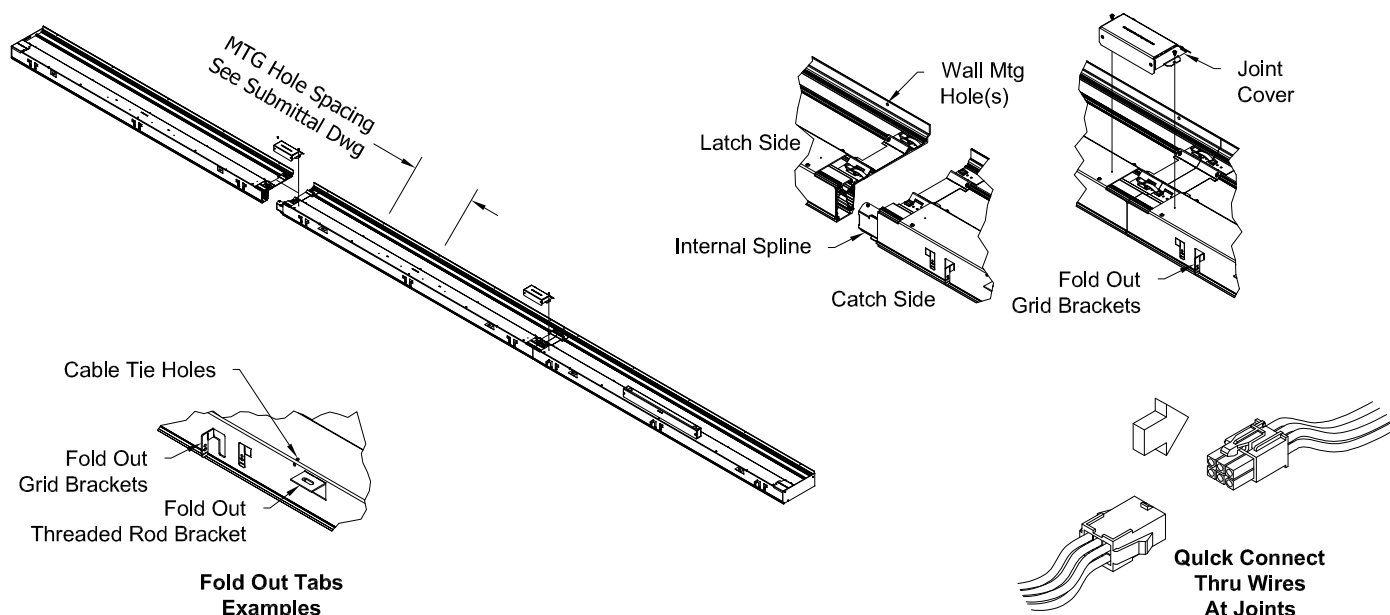
PAGE 1 OF 1

**WARNING - RISK OF FIRE AND ELECTRICAL SHOCK. FIXTURE MUST BE INSTALLED BY A QUALIFIED ELECTRICIAN ONLY. FIXTURE IS INTENDED FOR INSTALLATION IN ACCORDANCE WITH THE NATIONAL ELECTRICAL CODE, LOCAL AND FEDERAL SPECIFICATIONS. DISCONNECT POWER AT ELECTRICAL PANEL BEFORE SERVICING.**

**RETAIN THESE INSTRUCTIONS FOR MAINTENANCE REFERENCE.**



1. For Individual Luminaires, Raise the fixture to the desired AFF height and screw through the Wall Surface into the Blocking, through the provided holes, Ensuring that the fixture is Level along it's length.  
**\*\* (It is Strongly recommended to use either Threaded Rods or Cable Ties to Support the weight of the fixture during this process)**
2. For Continuous Runs, Follow the procedure in Step 1 for Each fixture section; BOR, MOR(s) & EOR. Each section (BOR, MOR(s) & EOR) is joined using the Splines and pair of Catch & Latch systems *shown below*.
3. Using Quick Connects, make Thru Wire connections at Joints then Screw on the Joint Cover.



Amerlux, 178 Bauer Drive, Oakland, N.J. 07436, T: 973-882-5010, F: 973-882-2604 [www.amerlux.com](http://www.amerlux.com)