

# Grüv® 4" High Efficiency Perimeter Cove

Recessed Linear LED

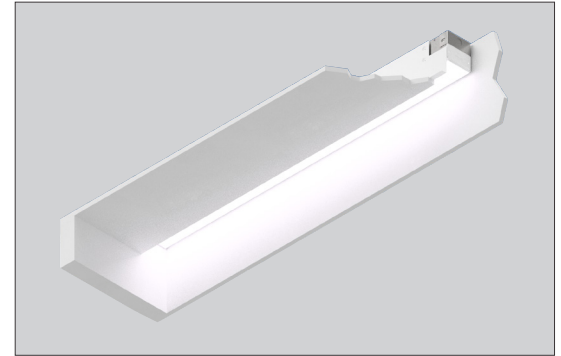


PROJECT:

TYPE:

## Features

Designed to provide high-performance, visually comfortable, high efficient perimeter ambient lighting with a 4" aperture for commercial and office environments. The reflector is tilted at an angle to provide even illumination down the wall.



## Product Overview

Type: Recessed Perimeter Asymmetric Lens  
Wattage: 5W/ft  
Color Temp: 3000K  
CRI: 90+ typ.  
Dimming: 0-10V, 1% dimming (standard)

## Certifications



## Fixture Summary

### Performance Data

Nominal Wattage/Foot	Delivered Lumens/Ft	LPW	Color Temp	CRI
5	451	90.2	3000K	90+

### Electrical Data

		4'		8'	
Wattage/Foot	Voltage	System Watts	Amps	System Watts	Amps
5	120V	22.3	0.18	41.9	0.35
	277V	22.9	0.09	41.6	0.16

Electronic multi-volt (120-277VAC), constant current LED driver.

# Grüv® 4" High Efficiency Perimeter Cove

Recessed Linear LED



PROJECT:

TYPE:

## Ordering Information

HW 120/277																																																	
1	2	3	4	5	6	7	8	9	10																																								
1 Model EDR-2400-GRUV4-HE-J/GB-COVE-A16* j-mold/gyp board trimless EDR-2400-GRUV4-HE-J/GRID-COVE-A16* j-mold/grid				2 Optics ASY asymmetric lens		3 Wattage (per foot) 5 5W/ft		4 Color Temp 309 3000K-90+																																									
5 Finish HW high reflectance matte white		6 Voltage 120/277		7 Length <table><tr><td colspan="2">Length A</td><td>X</td><td colspan="2">Length B</td><td>X</td><td colspan="2">Length C</td></tr><tr><td colspan="2">- all patterns</td><td></td><td colspan="2">- all patterns</td><td></td><td colspan="2">- PU</td></tr><tr><td colspan="2">- IND</td><td></td><td colspan="2">- PR (2 lengths of 2)</td><td></td><td colspan="2">- PZ</td></tr><tr><td colspan="2">- CON</td><td></td><td colspan="2"></td><td></td><td colspan="2"></td></tr><tr><td colspan="2">- CUS</td><td></td><td colspan="2"></td><td></td><td colspan="2"></td></tr></table>						Length A		X	Length B		X	Length C		- all patterns			- all patterns			- PU		- IND			- PR (2 lengths of 2)			- PZ		- CON								- CUS							
Length A		X	Length B		X	Length C																																											
- all patterns			- all patterns			- PU																																											
- IND			- PR (2 lengths of 2)			- PZ																																											
- CON																																																	
- CUS																																																	
8 Configuration IND <sup>1</sup> individual fixture, 2' to 8' in 1' increments CON continuous run > than 8', specify to nearest foot CUS custom made to measure, ± 1/8" of customer supplied field dimensions <u>Standard Patterns</u> (see pg 8 for details) PLL L left, (2) straights + (1) 90° corner, leg right PLR L right, (2) straights + (1) 90° corner, leg left PU U shape, (3) straight lengths + (2) 90° corners PR Rectangle shape, (4) straight lengths + (4) 90° corners PZ Z shape, (3) straight lengths + (2) 90° corners				9 Drivers/Controls <u>Wired - Static White</u> 0-10V 1% electronic dimming, multi-volt 120-277VAC, constant current driver (standard)				10 Options/Accessories CP Chicago Plenum (CCEA) WHIP 6' whip, 18/5 conductor EMC-PF <sup>2</sup> emergency circuit requires power feed located in last fixture section (for other locations consult factory) PF <sup>2</sup> extra power feed for additional circuiting																																									

<sup>†</sup> The "A" refers to the sequential revision in a year and "XX" refers to the year of update. Updates coincide with improved performance while not changing the overall fixture aesthetic and are reflected in the published performance data. Please contact your Amerlux representative for explanations of changes.

<sup>1</sup> Lengths less than 4' may have restrictions based upon wattage, lengths, drivers or other options.

<sup>2</sup> Not available with IND (individual) configuration.

# Grüv® 4" High Efficiency Perimeter Cove

## Recessed Linear LED



PROJECT:

TYPE:

### Specifications

#### Application

Commercial and retail recessed perimeter cove asymmetric lighting.

#### Construction

Heavy gauge steel upper housing is secured to aluminum extruded trim rails. Die-formed, cold-rolled steel internal components and external mounting brackets. Numerous configurations accommodate most architectural ceiling conditions. Die formed steel cove walls - powder coat painted.

#### Optical

All lenses are snap-in, extruded acrylic, with a maximum length of 8'. Amerlux's proprietary acrylic lens provide excellent transmission while effectively concealing source image. **ASY** - tilted reflector provides asymmetric beam to evenly illuminate down the wall

#### LED

Amerlux's boards and patented connector design with brand name LEDs enables Amerlux fixtures to have excellent thermal management and offer a 5 year warranty. Our LED binning is within 3 MacAdam ellipse. Boards are configured for maximum flexibility resulting in even illumination no matter the fixture layout. LED boards are easily replaced in the field with just a Phillips screw driver.

**Color Temperature Option:** 3000K

**CRI:** 90+ typical

R9: >50 @ CRI 92

**Life:** 50,000+ hr., > 70% of initial lumens (L70)

#### Electrical

**Wiring:** Supply wires are easily accessible through access plate on top of fixture.

**WHIP:** Optional factory installed 6' Greenfield whip (18/5 conductor) simplifies installation.

**Standard Wattage:** 5W/ft

Emergency circuit via remote inverter or auxiliary emergency power supply (by others).

***This product complies with IEEE C62.41 for surge endurance up to 2.5KV. Amerlux® recommends using additional surge protection with this unit (supplied by others), surge and over voltage damage is not covered under warranty.***

**EMC-PF** - Emergency circuit requires power feed to be located in last fixture section for continuous runs. For other locations consult factory. Not available for individual (IND) configuration.

**PF** - Extra power feed for additional circuiting. Not available for individual (IND) configuration.

#### Finish

**HW** - High reflectance, matte white powder coat paint. Baked on finish for maximum durability and color stability.

#### Configurations/Lengths

**IND** - Individual fixtures are made of single standard lengths of 2 ft to 8 ft (in 1' increments). These are stand alone fixtures with matching End Caps, supplied with the mounting hardware. Lengths less than 4' may have restrictions based upon wattage, lengths, drivers or other options.

**CON** - Continuous runs, > 8', specified to nearest whole foot length in 1' increments. Runs made from standard lengths have End Caps at the beginning and end of run. Runs > 60' may require second power feed. Each Housing has factory installed alignment pins. Mating fixtures are easily aligned and joined with "catch and latch" mechanisms out of sight, on top of the Housing. Wiring is made fast and positive with molded quick connectors.

**CUS** - Custom made to measure runs are made to nearest 1/8" of customer supplied field measurements or drawings. Custom lengths use the same hardware for hairline joining.

**PXX** - Standard Patterns consist of 90° corners with standard lengths (4' to 8' in 1' increments), continuous runs or made to measure lengths. Depending upon complexity of the pattern drawings may be required from the Customer. If ordering please give overall lengths.

**A'-B'-PLL** - L Left - (1) 90° Corner 2 segments. Specify overall segments: A' & B'

**A'-B'-PLR** - L Right - (1) 90° Corner 2 segments. Specify overall segments: A' & B'

**A'-B'-PR** - Rectangle - (4) 90° Corners joining 4 segments. Specify overall segments: A' & B'

**A'-B'-C'-PU** - U shape - (2) 90° Corners joining 3 segments. Specify overall segments: A', B', & C'

**A'-B'-C'-PZ** - Z shape - (2) 90° Corners joining 3 segments. Specify overall segments: A', B', & C'

**See page 8 for layouts.**

#### Mounting

Intended for use in gypsum board, 9/16" Tee grid and Screw Slot ceilings. Wall mounting J-Molding details available. For individual, continuous row, or pattern applications.

**Please note - fixtures to be installed before gypsum board ceiling.**

**GRUV4-HE-J/GB-COVE** - J mold/gyp trimless, plastered in ceiling - J Channel wall side

**GRUV4-HE-J/GRID-COVE** - J mold/grid, in 9/16" Screw Slot or Flat Tee ceilings - J Channel wall side

#### Certifications

Approved to UL standards for damp locations as tested by OSA Intended for indoor use only

Chicago Plenum (CCEA) optional

#### Warranty

Amerlux's 5 year limited warranty. Please consult Amerlux website for details.

# Grüv® 4" High Efficiency Perimeter Cove

Recessed Linear LED

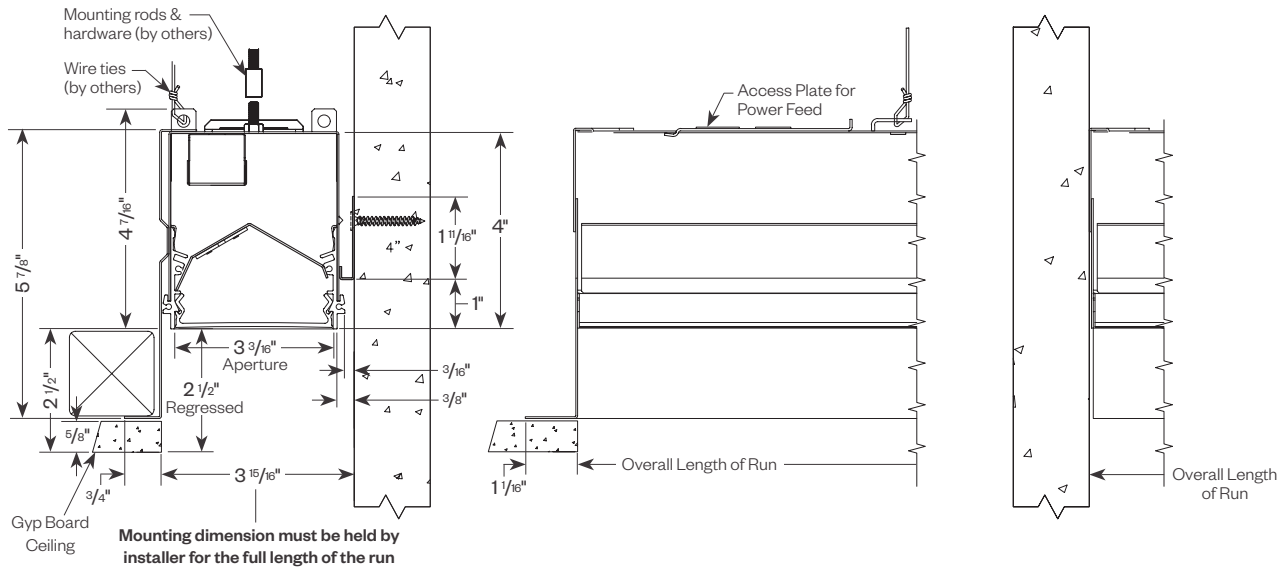


PROJECT:

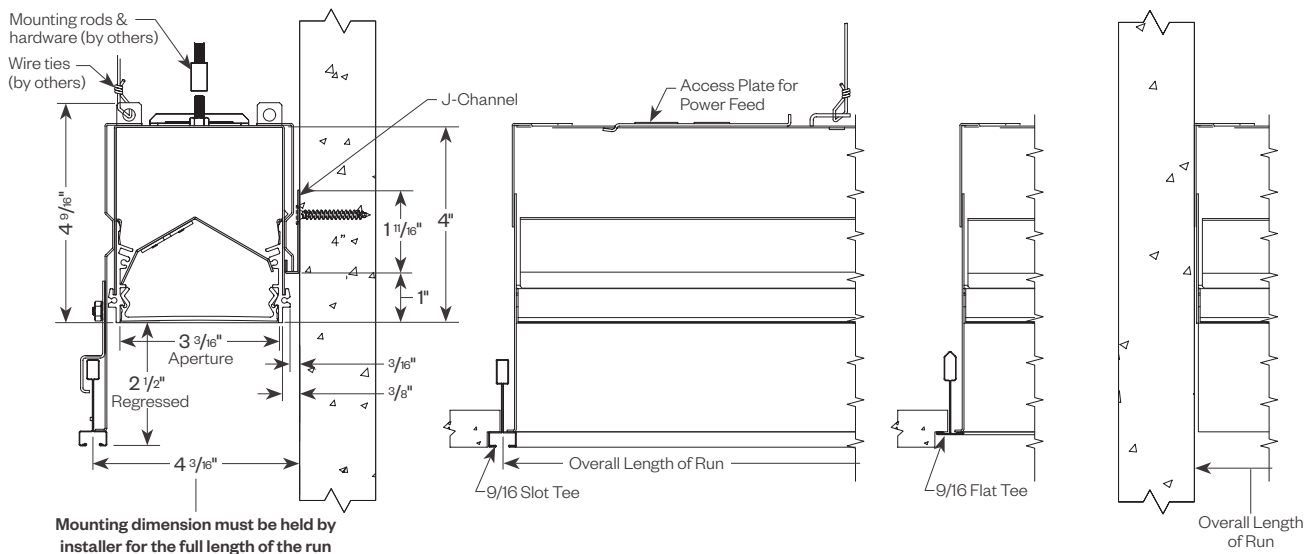
TYPE:

## Product Details

EDR-2400-GRÜV4-HE-J/GB-COVE (j-mold/gyp board trimless)



EDR-2400-GRÜV4-HE-J/GRID-COVE (j-mold/grid mount)



# Grüv® 4" High Efficiency Perimeter Cove

Recessed Linear LED



PROJECT:

TYPE:

## Grüv 4" Patterns

### Standard Patterns

All corners are standard 90°, standard length legs.

Use standard lengths: 4' min to 8' in 1 foot increments.

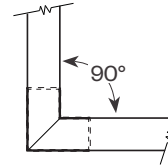
Continuous runs must be the same length in pairs for closed configuration.

### Custom Patterns

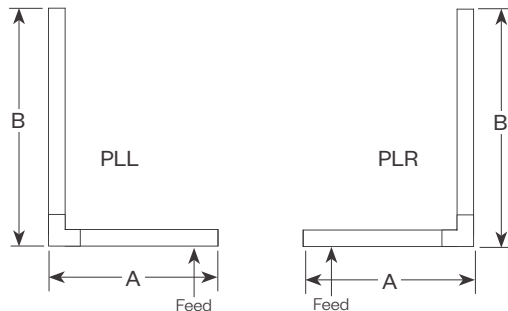
Please provide drawings of your configuration.

Made to Measure: +/- 1/8", consult factory.

PC - custom pattern, please provide drawings and consult factory



**Grüv 2.5 Lens**  
Mitered Lens

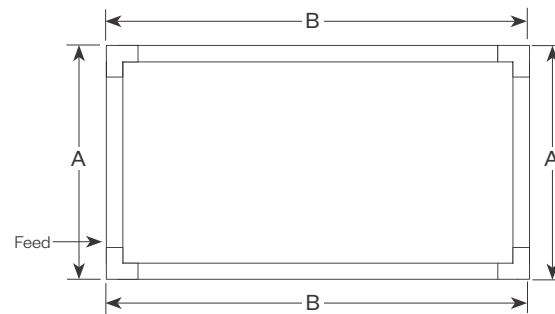


**PLL** - L Left, (2) straights + (1) 90° corner, leg right

**PLR** - L Right, (2) straights + (1) 90° corner, leg left

Provide overall lengths: A' & B'

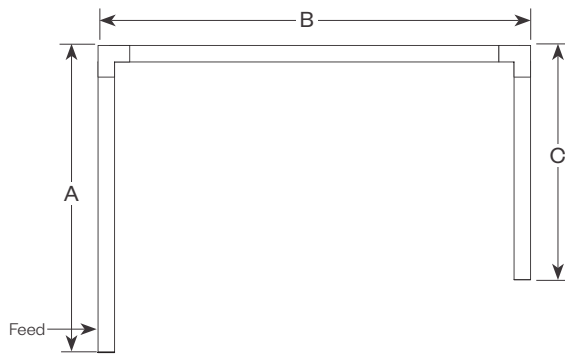
Nomenclature: A-B-PLL      A-B-PLR



**PR** - Closed Rectangle, (4) straight lengths + (4) 90° corners

Provide overall lengths: A' & B'

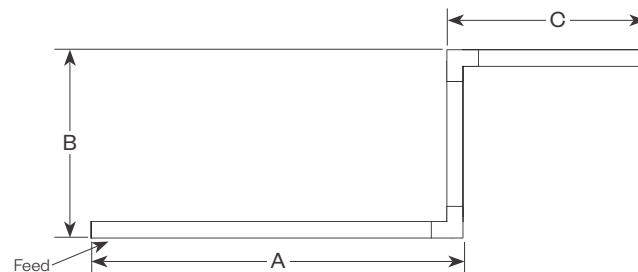
Nomenclature: A-B-PR



**PU** - Open U, (3) straight lengths + (2) 90° corners

Provide overall lengths: A', B' & C'

Nomenclature: A-B-C-PU



**PZ** - Open Z, (3) straight lengths + (2) 90° corners

Provide overall lengths: A', B' & C'

Nomenclature: A-B-C-PZ

# Grüv® 4" High Efficiency Perimeter Cove

## Recessed Linear LED

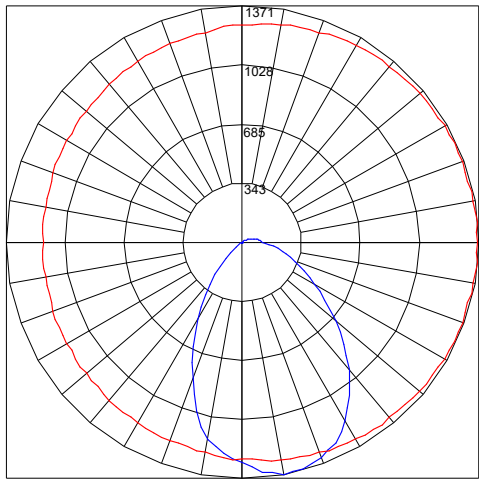


PROJECT:

TYPE:

### Performance Data

GRÜV 4" HE PERIMETER COVE ASYMMETRIC LENS 5W 3000K-90+ 4FT  
 Total Watts: 24  
 Total Lumens: 2694



**ZONAL LUMEN SUMMARY**

Zone	Lumens	%Fxt
0-40	1455	54.0
0-60	2219	82.4
0-90	2633	98.7
90-180	61	2.30

**COEFFICIENTS OF UTILIZATION**  
 Effective Floor Cavity Reflectance 20%

RC	80			
RW	70	50	30	10
ROR				
0	119	119	119	119
1	109	105	101	97
2	100	92	86	81
3	92	83	75	69
4	85	74	66	60
5	79	67	59	53
6	73	61	53	47
7	68	56	48	42
8	64	51	43	38
9	60	47	40	34
10	56	44	36	32

Note: Values are expressed as percent of total lumen output delivered to the task surface.

# Grüv® 4" High Efficiency Perimeter Cove

Recessed Linear LED



PROJECT:

TYPE:

## Dimming Compatibility

Amerlux® Gruv fixtures are compatible with all major dimming protocols prevalent in the United States. Please see below for general compatibilities and wiring diagrams. Amerlux recommends testing your unique dimming configuration as the exact full configuration (*Dimmer, Fixture Quantity, Voltage, etc*) may affect dimming performance.

--- NOTE: INFORMATION BELOW IS FOR WIRED DIMMERS ONLY. FOR WIRELESS DIMMERS, CONSULT FACTORY ---

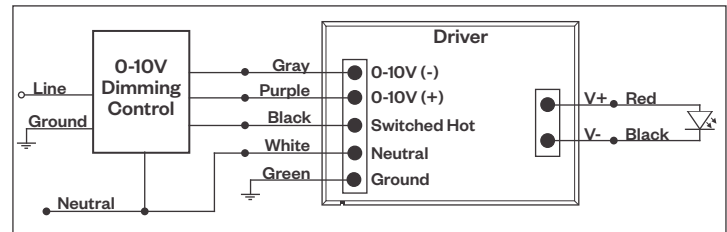
### 0-10V - DIMMING (Standard)

Integrates into a variety of building management and daylighting controls

#### Notes:

- 120V or 277V\*
- Dims down to 1% light output
- Requires interface to turn off power to driver
- Consult Dimming manufacturer for installation instructions - **DO NOT SHARE NEUTRALS!**

### 0-10V Wiring Diagram



### Compatible Dimmers\*:

Wall Box			Central System
Lutron:	Wattstopper:	Leviton:	Lutron Grafikx Eye with GRX-TV1 Interface
Diva - DVSTV	ADF-120277	Renoir II	
Maestro - MS-Z101			
Nova-T - NTSTV-DV			

#### Notes:

\* Driver is 277VAC dimmable with appropriate dimmer (by others). All provided wiring diagrams show 120VAC wiring colors and method. Please refer to 277VAC dimmer installation instructions for 277VAC wiring diagrams.

\* The absence of a dimmer from the lists above does not imply incompatibility. Please consult factory for compatibility inquiries.