

Evolve[®] 4.75"

Square Adjustable C3M



Adjustable

Features

The Evolve 4.75 C3M offers impressive performance, higher lumen delivery and consistent color. Available in 15W or 23W with various beam distributions or 18W in Very Narrow Spot distribution, and round or square aperture in a trimmed or trimless version. Suitable for a variety of lighting schemes featuring general accent task and display applications Evolve 4.75" C3M gives architects and lighting designers the flexibility to complete sustainable lighting designs.

Product Overview

Fixture Type:	Recessed Adjustable
Wattage:	15W, 18W (VNSP only), 23W
Lumen Output:	1361 lm (23W Spot); 862 lm (18W VNSP)
Color Temp:	2200K, 2700K, 3000K, 3500K, 4000K
CRI:	83 typ. (2700K, 3000K, 3500K, 4000K) 90+ typ. (2200K, 2700K, 3000K, 3500K, 4000K) CrispWhite & 3K Class A available
Dimming:	TRIAC & ELV (120/277VAC) Lutron Hi-lume [®] H Series/EcoSystem - 1% dim with soft on, fade to black, 120/277VAC 0-10V (120/277VAC) - 1% Dim DALI dimming - 1% Dim

PROJECT:



Trimless

TYPE:

Fixture Type

Round/Square	New Construction	Trim	Trimless
Yes	Yes	Yes	Yes

See separate spec sheet for Square trim

Electrical Data

	15W		18W		23W*	
	System Watts	Amps	System Watts	Amps	System Watts	Amps
120V	15	0.13	18	0.15	23	0.19
277V	15	0.05	18	0.06	23	0.08

Electronic constant current LED driver

*Includes thermal protector, 2w power consumption



Evoke® 4.75"

4.75" Square Adjustable C3M



Evoke 4.75" SA-C3M

PROJECT:

TYPE:

Housing/Frame Ordering Information

1	2	3	4	5	6	7
1 <u>Model</u> For New Construction E4.75SA-C3M-NC-A17[†] (New Construction) E4.75SA-C3M-CP-A17[†] (Chicago Plenum (CCEA)) E4.75SA-C3M-IC-A17[†] (Insulated Ceiling/air tight, 15W only)	2 <u>Style</u> T - trimmed TL - trimless (not available for use with Grid ceiling)	3 <u>Wattage</u> 15 (120/277) 18 (VNSP only, not available for use with IC housing) 23 (not available for use with IC housing)	4 <u>Voltage</u> 120 277 120/277 (for use with 15W only)	5 <u>Beam Spreads</u> VNSP - very narrow spot, 8° (18W only) SP - spot, 14° VNF - very narrow flood, 18° NF - narrow flood, 23° FL - flood, 34° WF - wide flood, 44°	6 <u>Color Temp</u> 83 CRI 90+ CRI 27 - 2700K-83 229 - 2200K-90+ CRISP - CrispWhite 30 - 3000K-83 279 - 2700K-90+ (not available for 35 - 3500K-83 309 - 3000K-90+ VNSP) 40 - 4000K-83 359 - 3500K-90+ 3CLA - 3K Class A 409 - 4000K-90+	7 <u>Driver</u> (for non-dimming, select LE/TE option) LE/TE - TRIAC/ELV dimming HILUME-H-ECO - Lutron Hi-lume® H Series, EcoSystem, 1% dim with soft on, fade to black O-10V - 0-10V dimming, 1% dim DALI - DALI dimming, 1% dim

Trim Ordering Information

E4.75SA-C3M-A17		
1	2	3
1 <u>Model</u> E4.75SA-C3M-A17[†]	2 <u>Style</u> T - trimmed TL - trimless (not available for use with Grid ceiling)	3 <u>Finish</u> <u>For Trimmed Fixture</u> MWW - matte white, white flange MBW - matte black, white flange SLVW - matte silver, white flange MBB - matte black, black flange <u>For Trimless Fixture</u> MW - matte white MB - matte black SLV - matte silver

[†] The "A" refers to the sequential revision in a year and "XX" refers to the year of update. Updates coincide with improved performance while not changing the overall fixture aesthetic and are reflected in the published performance data. Please contact your Amerlux representative for explanations of changes.

Evoke® 4.75"

4.75" Square Adjustable C3M



PROJECT:

TYPE:

Specifications

Application

Retail and commercial accent and display lighting

Housing Construction

20 ga. steel painted matte black
Formed aperture plate with 5/8" lip
Cast aluminum plaster frame with perforated face (for trimless fixture only)
Integral adjustable locking mounting bars
Thermally protected (23W only)
Die-cast lamp housing and heatsink

Reflector Construction

Die-cast aluminum seamless trim
Steel mounting ring with torsion spring

Optical

0-35° lockable tilt, 360°+ rotation
Beam Spreads: Very Narrow Spot, 8° (18W only);
Spot, 14°; Very Narrow Flood, 18°; Narrow Flood, 23°;
Flood, 25°; Wide Flood, 44°

LED

Color Temp Options:
2200K, 2700K, 3000K, 3500K, 4000K
CRI: 83 typ. (2700K, 3000K, 3500K, 4000K)
90+ typ. (2200K, 2700K, 3000K, 3500K, 4000K)
CrispWhite* available (see below * for description)
Class A** 3000K (high CRI, high gamut) available

R9 Values: 11 (83 CRI), 55 (92 CRI)

Binning: 3 MacAdam (SDCM)

**CrispWhite: CrispWhite Technology delivers the warmth of colors expected from a high 90 CRI solution but also creates the natural crisp white color that is pleasing to the eye. It creates the most impactful lighting ever available, by revealing the richest whites and vibrant colors that pop.*

***Class A LED: Class A LED's have a CRI > 80 and a GAI > 80. CRI defines color "Naturalness" and GAI defines color "Saturation." Both being high delivers rich colors and pure whites.*

Electrical

Wattage: 15, 18, 23

Electronic constant current LED driver, 120/277VAC input
This product complies with IEEE C62.41 for surge endurance up to 2.5KV. Amerlux® recommends using additional surge protection with this unit (supplied by others), surge damage is not covered under warranty.

Drivers

LE/TE - Leading Edge, TRIAC, forward phase/Trailing Edge, ELV, reverse phase (standard)
0-10V and Lutron systems also available
See pages 5-6 for more dimming information

Finish

Powder Coat/Wet paint
Consult factory for custom finishes

Mounting

26" Hanger bars included
Consult factory for hanger bars greater than 26"

Trimmed Fixture:

For use in grid or sheetrock ceilings, max ceiling thickness 1"

Trimless Fixture:

For use in sheetrock ceilings, max ceiling thickness 5/8"

Certifications

CSA approved to UL standards as tested by CSA
Chicago Plenum (CCEA) option
IC/AT rated (optional, 15W only)

Warranty

5 year limited warranty

Evoke® 4.75"

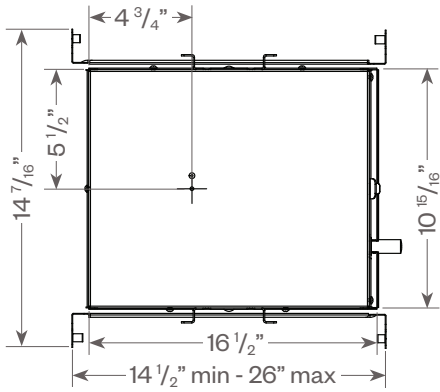
4.75" Square Adjustable C3M



PROJECT:

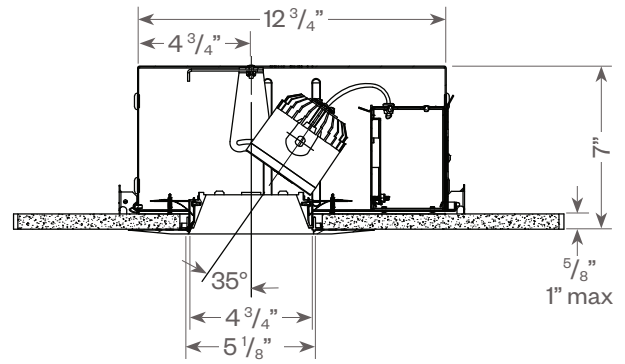
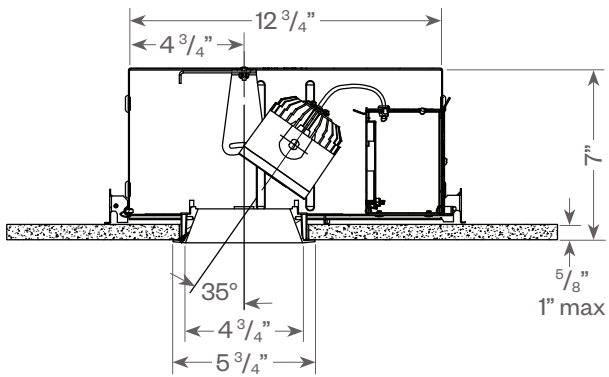
TYPE:

Evoke Round Adjustable C3M:



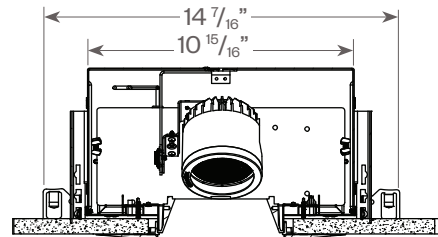
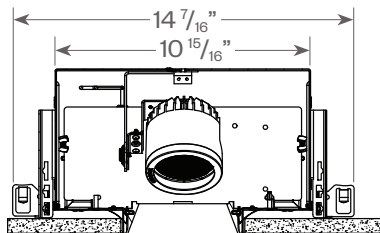
Trimmed

Trimless



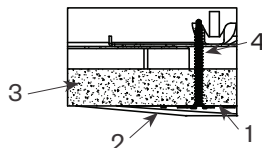
Ceiling cut out: 5 1/4" sq.

Ceiling cut out: 5 7/8" sq.



Plaster Frame Installation Detail (for trimless fixture only)

1. Cast Aluminum Plaster Frame
2. Plaster Skim Coat (by others)
3. Ceiling
4. Sheetrock Screw



Evoke[®] 4.75"

4.75" Square Adjustable C3M



PROJECT:

TYPE:

FIXTURE DATA: (Complete photometric data (.ies format) available upon request)

MULTIPLYING FACTORS: (Multiplying Factor is based on 3000K-83 120V IES file on website)

CCT:	2700K-83	3000K-83	3500K-83	4000K-83
Factor:	0.96	1.0	1.02	1.04

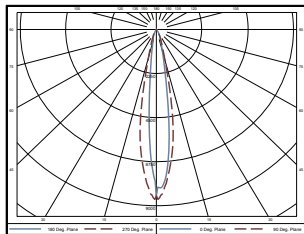
Wattage:	15W	23W
Factor:	0.65	1.0

For 18W VNSP data see next page.

CCT:	2200K-90+	2700K-90+	3000K-90+	3500K-90+	4000K-90+	CRISP	3CLA
Factor:	0.71	0.80	0.83	0.87	0.90	0.65	0.75

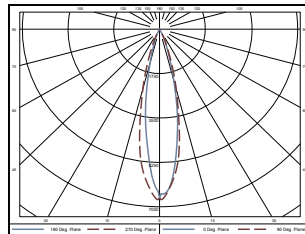
23W LED, 3000K-83

Spot (SP) Distribution, 14°
LTL #1167026
Lumens: 1218 lm



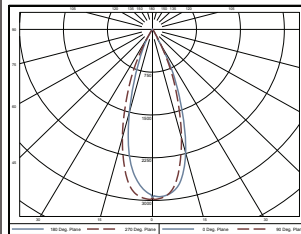
Candelas at Nadir	
Deg	Candela
0	8479
5	6549
15	1078
25	402
35	122
45	8

Narrow Flood (NF) Distribution, 23°
LTL #1167028
Lumens: 1361 lm



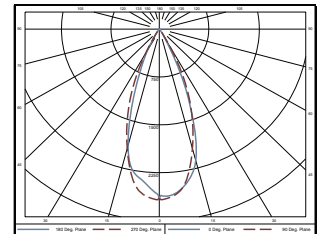
Candelas at Nadir	
Deg	Candela
0	6659
5	5869
15	2199
25	378
35	38
45	8

Flood (FL) Distribution, 34°
LTL # 1167025
Lumens: 1162 lm



Candelas at Nadir	
Deg	Candela
0	2952
5	2914
15	2220
25	824
35	44
45	11

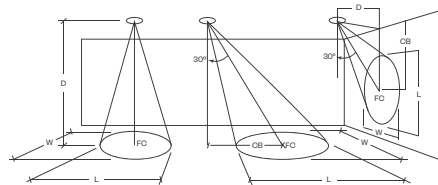
Wide Flood (WF) Distribution, 44°
LTL # 1167029
Lumens: 1258 lm



Candelas at Nadir	
Deg	Candela
0	2647
5	2592
15	2116
25	708
35	51
45	11

Application Data:

		0° Aiming Angle Horizontal Footcandles			
		D	FC	L	W
SPOT		5.0'	219	1.7	2.1
		7.5'	120	2.2	3.0
		10.0'	74	2.8	3.7
		12.5'	49	3.3	4.6
NARROW FLOOD		5.0'	205	2.3	2.5
		7.5'	104	3.1	3.5
		10.0'	61	3.9	4.6
		12.5'	40	4.8	5.6
FLOOD		5.0'	108	3.1	3.2
		7.5'	50	4.5	4.7
		10.0'	29	6.0	6.2
		12.5'	19	7.5	7.7
WIDE FLOOD		5.0'	98	3.4	3.5
		7.5'	45	5.1	5.2
		10.0'	26	6.8	6.9
		12.5'	17	8.5	8.7



Notes and Definitions:

Beam spread is to 50% center beam candlepower (OBOP).

D=Distance to floor or wall.

FC=Footcandles on floor or wall at center beam aiming location.

L=Effective Visual Beam length in feet (50% of maximum footcandle level).

W=Effective Visual Beam width in feet (50% of maximum footcandle level).

CB=Distance across or down to center beam location.

Evoke® 4.75"

4.75" Square Adjustable C3M



PROJECT:

TYPE:

FIXTURE DATA: (Complete photometric data (.ies format) available upon request)

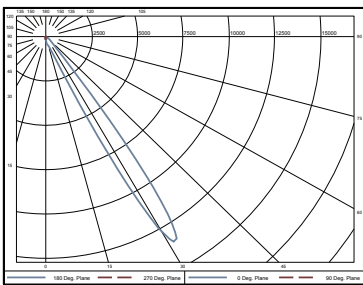
MULTIPLYING FACTORS: (Multiplying Factor is based on 3000K-83 120V IES file on website)

CCT:	2700K-83	3000K-83	3500K-83	4000K-83
Factor:	0.96	1.0	1.02	1.04

CCT:	2200K-90+	2700K-90+	3000K-90+	3500K-90+	4000K-90+	CRISP	3CLA
Factor:	0.71	0.80	0.83	0.87	0.90	0.65	0.75

18W LED, 3000K-83

Very Narrow Spot (VNSP) Distribution, 8°
LTL #1241660
Lumens: 862 lm



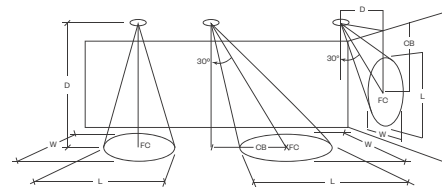
Candelas at Nadir

Deg	Candela
0	175
10	454
20	798
30	12800
35	9176
40	1272
50	302
60	8

Application Data:

Notes and Definitions:

- Beam spread is to 50% center beam candlepower (CBCP).
- D**=Distance to floor or wall.
- FC**=Footcandles on floor or wall at center beam aiming location.
- L**=Effective Visual Beam length in feet (50% of maximum footcandle level).
- W**=Effective Visual Beam width in feet (50% of maximum footcandle level).
- CB**=Distance across or down to center beam location.



30° Aiming Angle
Horizontal
Footcandles

	D	FC	L	W	CB
VERY NARROW SPOT	5.0'	171	1.5	1.7	3.0
	7.5'	91	2.3	2.4	5.0
	10.0'	70	2.5	2.9	6.0
	12.5'	44	3.1	3.5	8.0

Evoke® 4.75"

4.75" Square Adjustable C3M



PROJECT:

TYPE:

DIMMING COMPATIBILITY:

Amerlux® Evoke fixtures are compatible with all major dimming protocols prevalent in the United States. Please see below for general compatibilities and wiring diagrams. Amerlux recommends testing your unique dimming configuration as the exact full configuration (Dimmer, Fixture Quantity, Voltage, etc) may affect dimming performance.

--- NOTE: INFORMATION BELOW IS FOR WIRED DIMMERS ONLY. FOR WIRELESS DIMMERS, CONSULT FACTORY ---

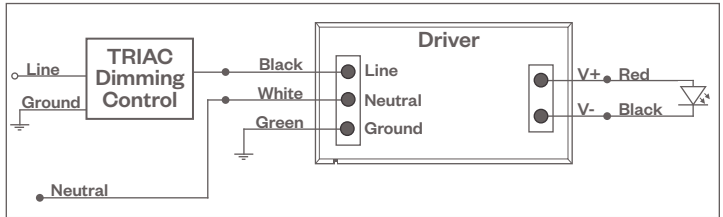
TRIAC (Forward Phase) DIMMING (Standard)

Utilizes "Standard" incandescent dimmers that are in wide use in installations across the US. Best for retrofit applications where TRIAC dimmers are installed.

Notes:

- 120VAC or 277VAC*
- Dims down to less than 5% light output (most cases)
- Consult Dimming manufacturer for installation instructions - DO NOT SHARE NEUTRALS!
- Must meet dimmer Minimum Load Requirements per dimming manufacturer

TRIAC Wiring Diagram



Compatible Dimmers†:

Wall Box (Incandescent Style, Wattage as required)		Central System
Lutron "Diva"	Lutron "Vareo"	Lutron "GP" Panel
Lutron "Nova-T"	Lutron "Skylark"	Lutron Grafik Eye QS
Lutron "Maestro"		

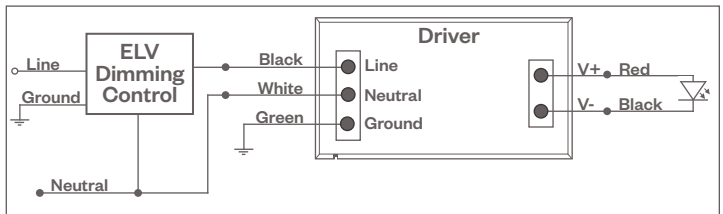
ELV - Electronic Low Voltage (Reverse Phase) DIMMING (Standard)

Utilizes specialized "ELV" dimmers.

Notes:

- 120VAC or 277VAC*
- Dims down to less than 5% light output (most cases)
- Consult Dimming manufacturer for installation instructions - DO NOT SHARE NEUTRALS!
- Must meet dimmer Minimum Load Requirements

ELV Wiring Diagram



Compatible Dimmers†:

Wall Box (ELV Style)		Central System
Lutron "Diva"	Leviton "Surslide"	Lutron "GP" Panel with PHPM-PA Interface
Lutron "Nova-T"	Leviton "Vizio"	Lutron Grafik Eye QS with PHPM-PA Interface
Lutron "Maestro"		
Lutron "Vareo"		
Lutron "Skylark"		

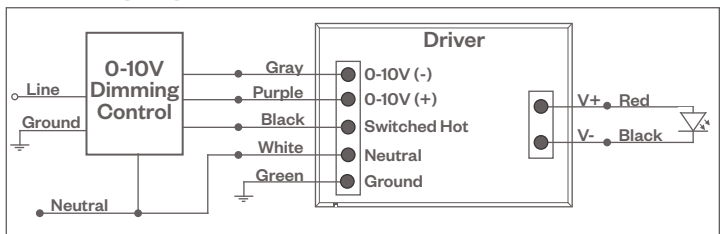
0-10V - DIMMING (-0-10V Option)

Integrates into a variety of building management and daylighting controls

Notes:

- 120VAC or 277VAC*
- Dims down to 1% light output
- Requires interface to turn off power to driver
- Consult Dimming manufacturer for installation instructions - DO NOT SHARE NEUTRALS!

0-10V Wiring Diagram



Compatible Dimmers†:

Wall Box	Central System
Lutron "Diva" - DVTV with PP-120H Interface	Leviton Renoir II 0-10V
	Lutron Grafik Eye with GRX-TVI Interface

Notes:

* Driver is 277VAC dimmable with appropriate dimmer (by others). All provided wiring diagrams show 120VAC wiring colors and method. Please refer to 277VAC dimmer installation instructions for 277VAC wiring diagrams.

† The absence of a dimmer from the lists above does not imply incompatibility. Please consult factory for compatibility inquiries.

Evoke® 4.75"

4.75" Square Adjustable C3M



PROJECT:

TYPE:

DIMMING COMPATIBILITY:

Amerlux® Evoke fixtures are compatible with all major dimming protocols prevalent in the United States. Please see below for general compatibilities and wiring diagrams. Amerlux recommends testing your unique dimming configuration as the exact full configuration (Dimmer, Fixture Quantity, Voltage, etc) may affect dimming performance.

--- NOTE: INFORMATION BELOW IS FOR WIRED DIMMERS ONLY. FOR WIRELESS DIMMERS, CONSULT FACTORY ---

LUTRON H-SERIES / ECOSYSTEM (-HILUME-H-ECO Option)

Integrates into Lutron EcoSystem building management

Notes:

- 120VAC or 277VAC*
- Dims down to 1% light output
- EcoSystem Control
- Consult Dimming manufacturer for installation instructions - DO NOT SHARE NEUTRALS!

Compatible Dimmers†:

Lutron ECO System

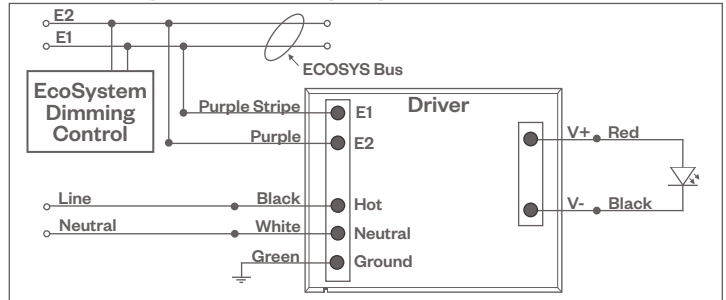
Pow Pak Dimming Modules
Energi Savr Node
Grafik Eye QS/Homeworks
QS Control Unit
Quantum Hub
Homeworks QS/My Room

Central System

Lutron EcoSystem compatible controls

HILUME-H-ECO, HILUME-5-ECO

EcoSystem Digital Control Wiring Diagram



DALI DIMMING (-DALI OPTION)

Digital control protocol allows individual fixture control

Notes:

- 120VAC - 277VAC*
- Dims down to 1% light output in most cases

Compatible Dimmers†:

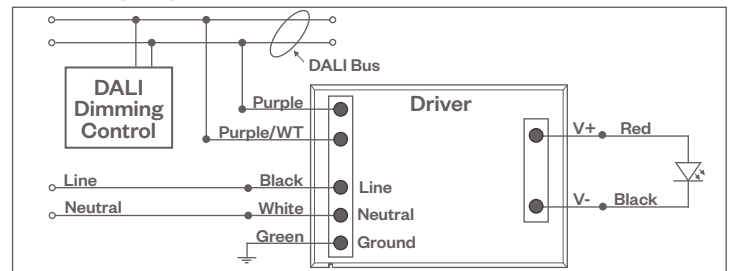
Wall Box (3-Wire Fluorescent)

Leviton CD250 Controller

Central System

Dynalite
Fifth Light

DALI Wiring Diagram



Notes:

- * Driver is 277VAC dimmable with appropriate dimmer (by others). All provided wiring diagrams show 120VAC wiring colors and method. Please refer to 277VAC dimmer installation instructions for 277VAC wiring diagrams.
- † The absence of a dimmer from the lists above does not imply incompatibility. Please consult factory for compatibility inquiries.