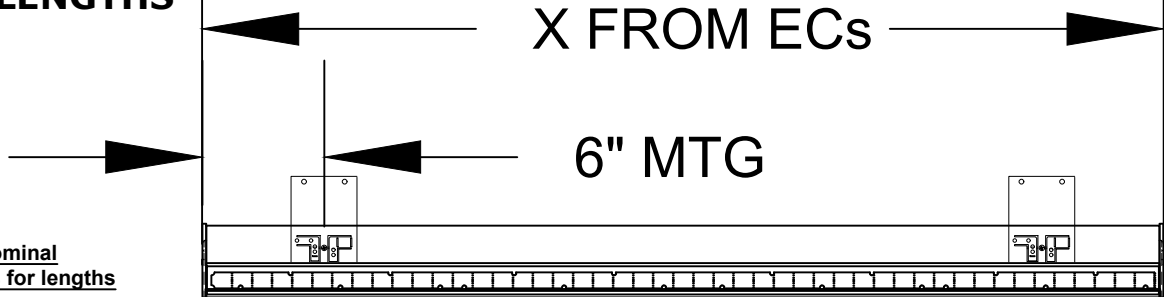


WARNING - RISK OF FIRE AND ELECTRICAL SHOCK. FIXTURE MUST BE INSTALLED BY A QUALIFIED ELECTRICIAN ONLY. FIXTURE IS INTENDED FOR INSTALLATION IN ACCORDANCE WITH THE NATIONAL ELECTRICAL CODE, LOCAL AND FEDERAL SPECIFICATIONS. DISCONNECT POWER AT ELECTRICAL PANEL BEFORE SERVICING.
RETAIN THESE INSTRUCTIONS FOR MAINTENANCE REFERENCE.

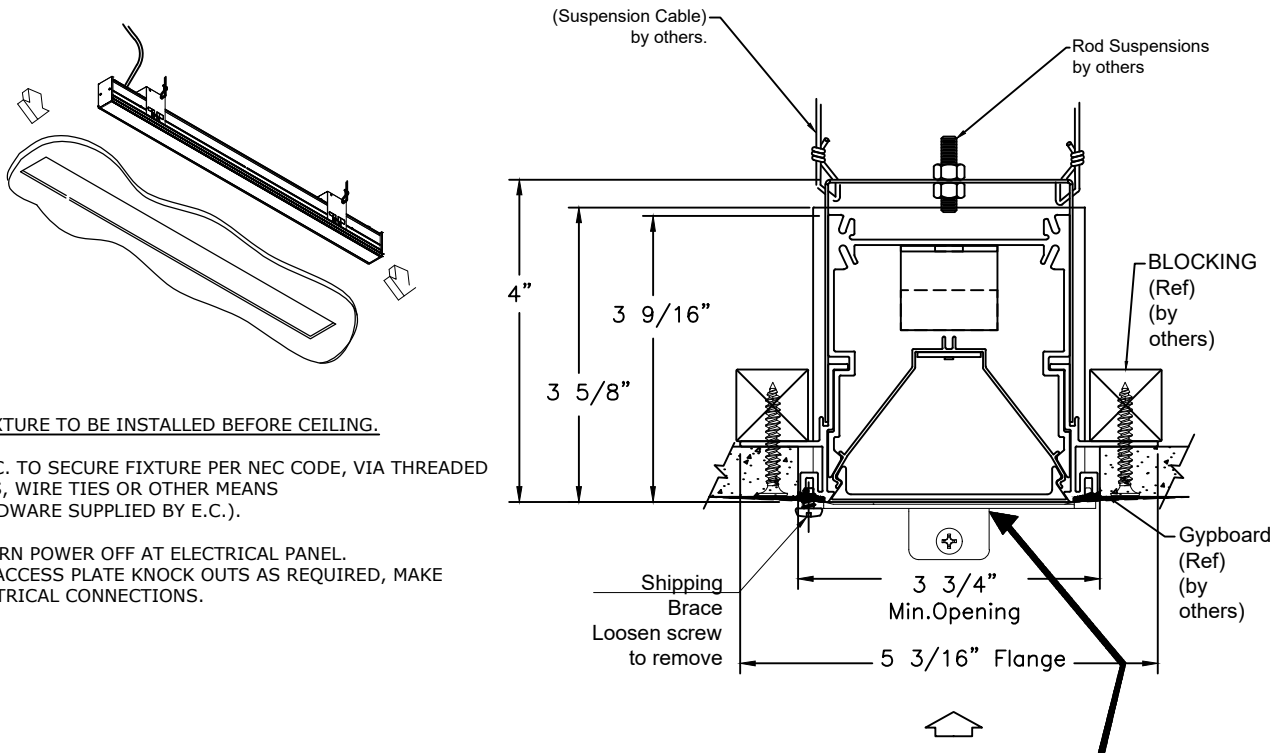
**CAR3.0 GB
RUN LENGTHS**

**1" Nominal
Increments for lengths**



FIXTURES TO BE INSTALLED PER NEC "MEANS OF SUPPORT AND ALL FEDERAL, NATIONAL AND LOCAL BUILDING CODES.

**Shown: hanging the fixture
via threaded rods.**



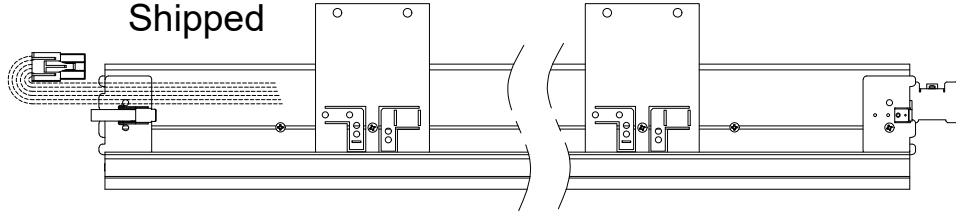
1. FIXTURE TO BE INSTALLED BEFORE CEILING.
2. E.C. TO SECURE FIXTURE PER NEC CODE, VIA THREADED RODS, WIRE TIES OR OTHER MEANS (HARDWARE SUPPLIED BY E.C.).
3. TURN POWER OFF AT ELECTRICAL PANEL. USE ACCESS PLATE KNOCK OUTS AS REQUIRED, MAKE ELECTRICAL CONNECTIONS.

See wiring schematic provided with fixture for wire colors and their specific functions as different fixture options may use wires for different purposes.
DO NOT CONNECT CONTROL WIRES TO LINE VOLTAGE.
 Amerlux is not liable for damage due to miswiring.

Contact factory with any questions.

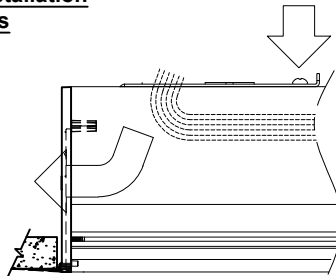
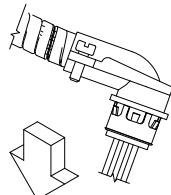
**MINIMUM CEILING OPENING MUST BE HELD BY INSTALLER FOR THE FULL LENGTH OF THE RUN
DO NOT REMOVE SHIPPING BRACES UNTIL CEILING IS FINISHED**

MOR Fixture As Shipped



Connect Feed to appropriate Fixtures

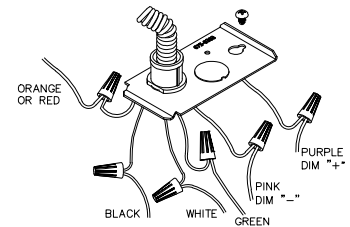
Identify which fixtures require a feed and connect the appropriate kit.
For detailed instructions, see installation sheet packed in Feed Kits



ACCESS PLATE DETAIL FEED WIRING CONNECTIONS

0-10V DIM shown:

Black (hot)
White (neutral)
Green (ground)
Purple (Dim +)
Pink (Dim -)
Orange or Red (unswitched hot for emergency ballast as applicable)



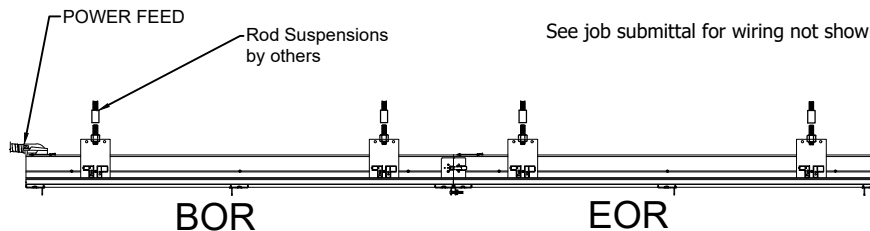
For non-DIM applications cap Purple (+) & Pink (-) (wire nuts supplied by others).

Other wiring (not shown) same as above except:

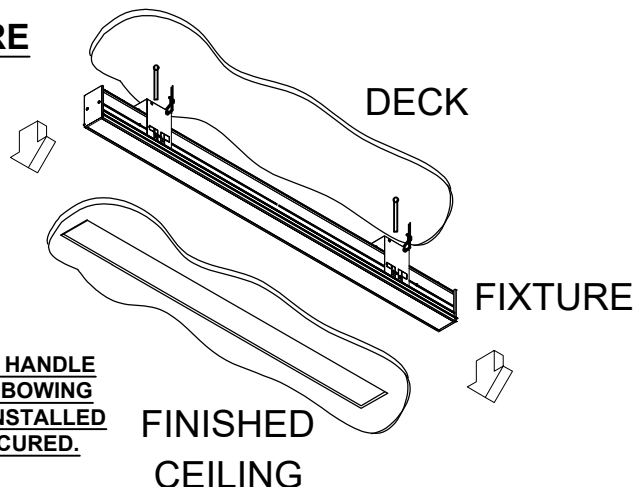
LUTRON ECO: Purple (E1), Pink (E2)

DALI: Purple (DA+), Pink (DA-)

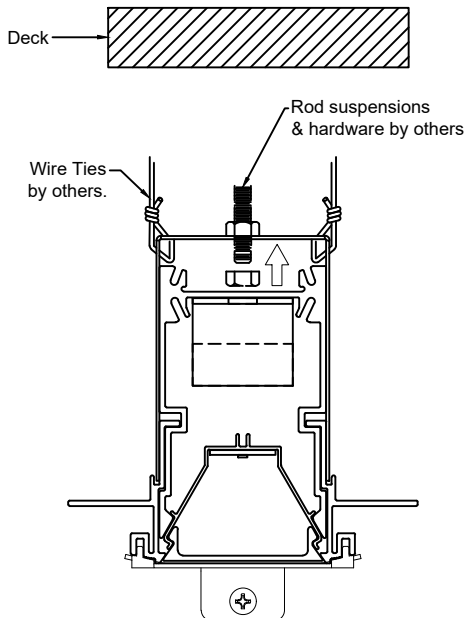
See job submittal for wiring not shown here.



1. INSTALLING FIXTURE



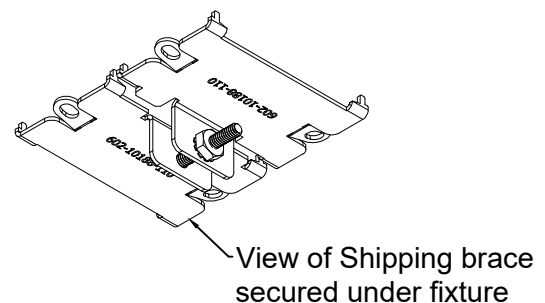
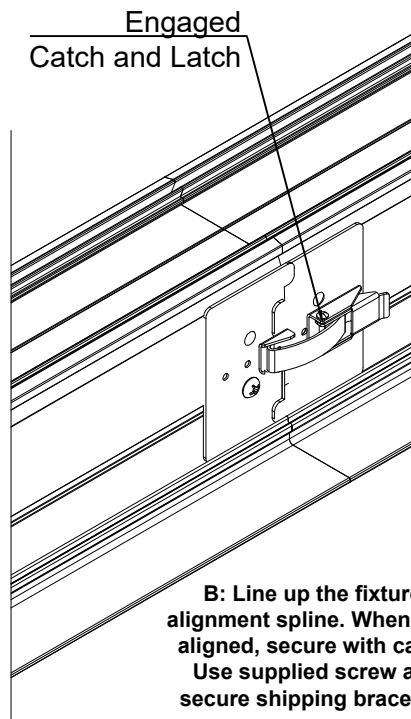
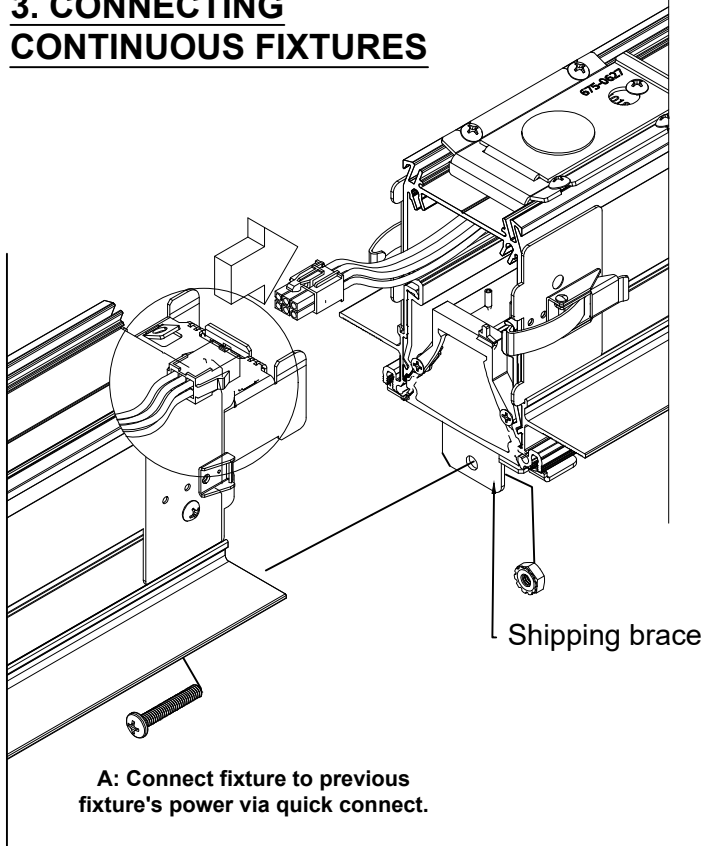
LIFT FIXTURE TO CEILING DECK. HANDLE FIXTURE CAREFULLY TO AVOID BOWING AND/ OR FIXTURE DISTORTION. INSTALLED FIXTURE TO BE LEVEL AND SECURED.

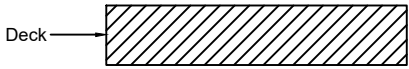


2. Secure fixture to deck with rod suspension and wire ties.

FOR CONTINUOUS ROWS INSTALL BOR-BEGINING OF ROW, MOR-MIDDLE OF ROW, AND EOR-END OF ROW FIXTURE SECTION PER PLAN.

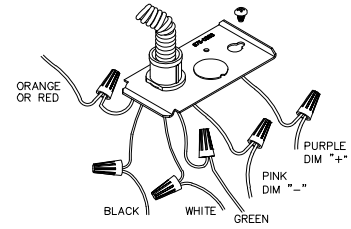
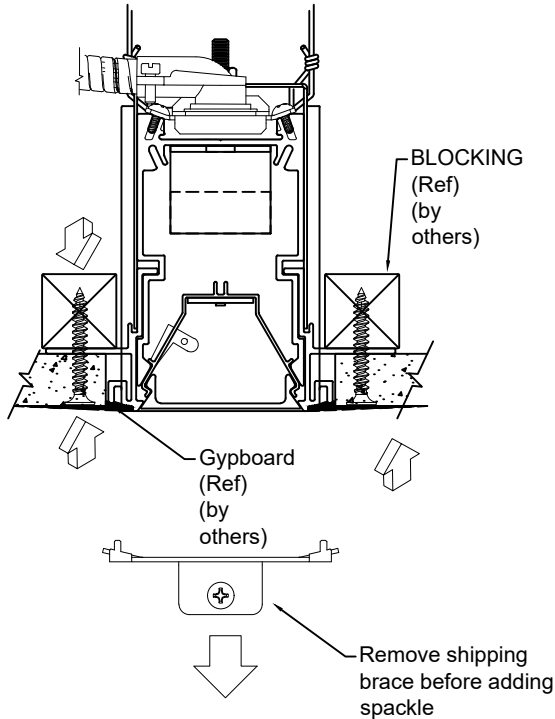
3. CONNECTING CONTINUOUS FIXTURES





4. Install ceiling after fixture install and make power connections.

Blocking and spackle finish provided by others as shown.



**ACCESS PLATE DETAIL
FEED WIRING CONNECTIONS**

0-10V DIM shown:

Black (hot)
White (neutral)
Green (ground)
Purple (Dim +)
Pink (Dim -)
Orange or Red (unswitched hot for emergency ballast as applicable)

For non-DIM applications cap Purple (+) & Pink (-) (wire nuts supplied by others).

Other wiring (not shown) same as above except:

LUTRON ECO: Purple (E1), Pink (E2)

DALI: Purple (DA+), Pink (DA-)

See job submittal for wiring not shown here.

Maintenance

- Make sure to turn off all power to fixture before maintenance.
- Prior to ANY work, touch metal on fixture to discharge any build up of static electricity.
- To access internal components, first remove lens.

1.) LED Fixture:

Consult Amerlux for LED maintenance.

2.) LED Replacement:

For LED board replacement, remove screw and slide board out of reflector. Follow instructions on next page.

3.) Driver maintenance:

Drivers are located beneath bottom reflectors, secured by (2) clips

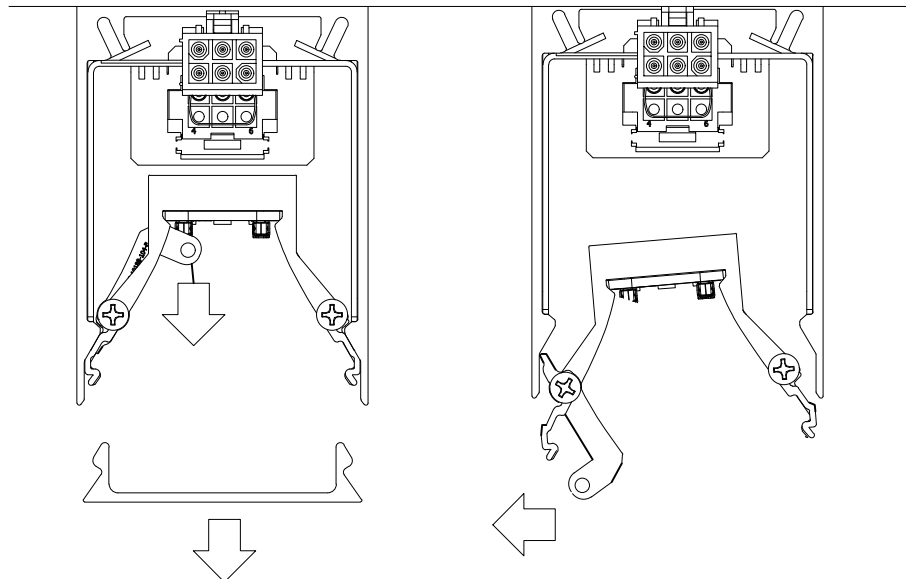
Remove 1 clip and loosen other to remove driver

For driver replacement, please specify:

Manufacturer, Model No, and Current Setting (____mA).

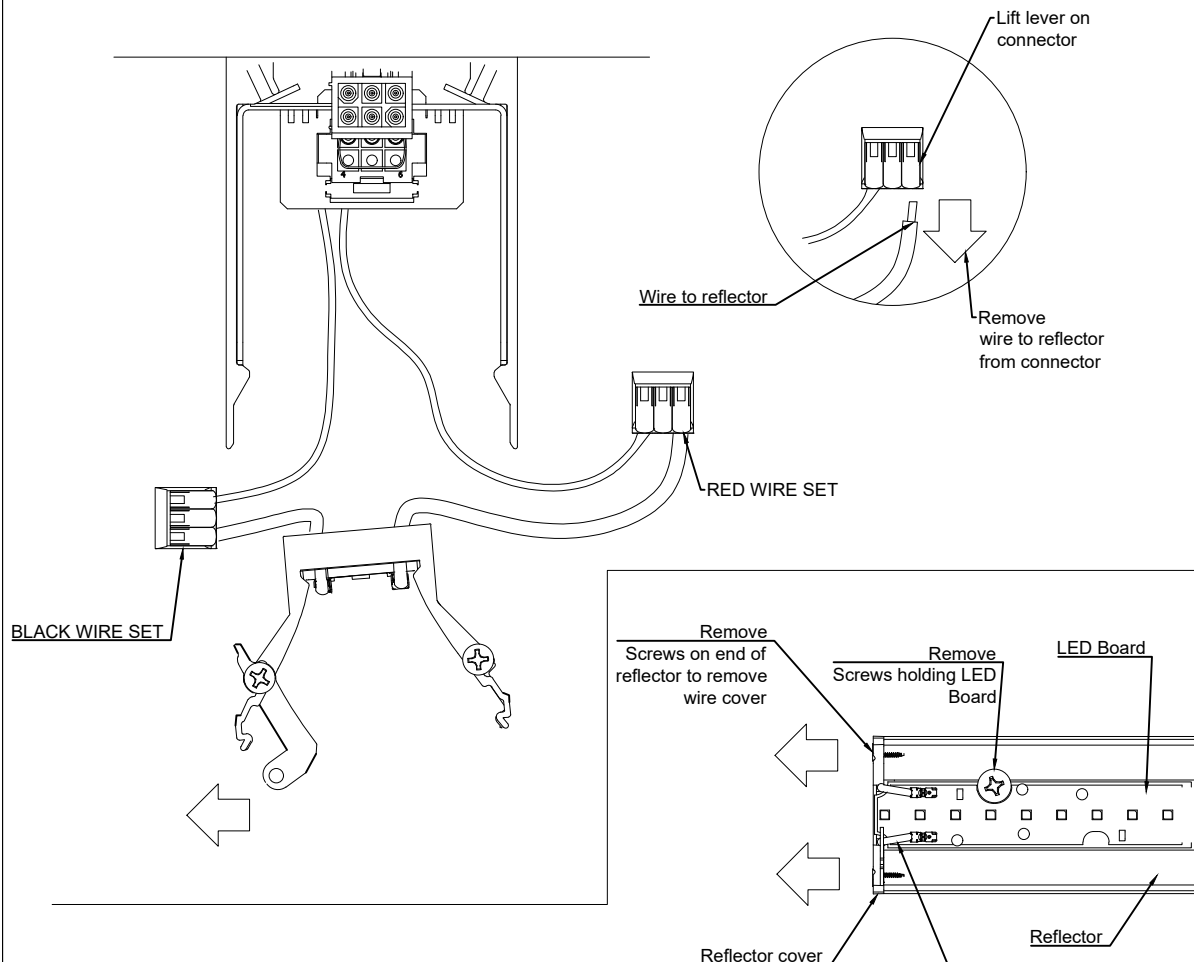
See 710-0134 Wiring Schematic for standard fixtures

See 710-1080 Wiring Schematic for 2-Color tunable white fixtures

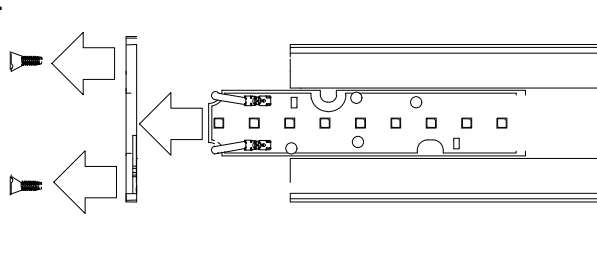


Maintenance

Disconnect reflector by removing wires at wago lever connector.

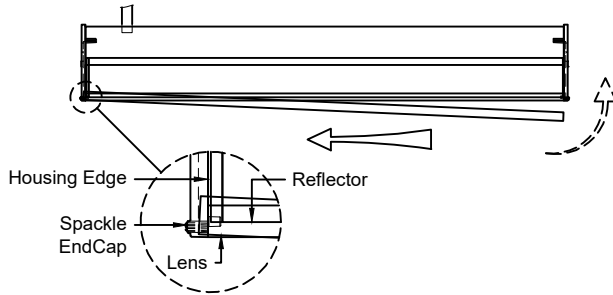


- 1.) Remove screws from Board and end of Reflector holding down reflector end cover.
- 2.) Slide board out and replace with new board. Board information must be provided to manufacturer when placing new order to deliver correct replacement.
- 3.) Follow steps in reverse to reinstall.

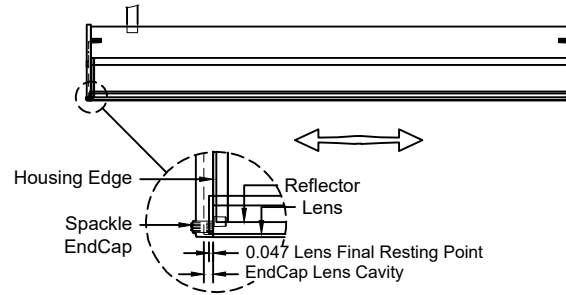


Maintenance

FOR INDIVIDUAL LUMINAIRES: Follow Lens Replacement Instruction Below...

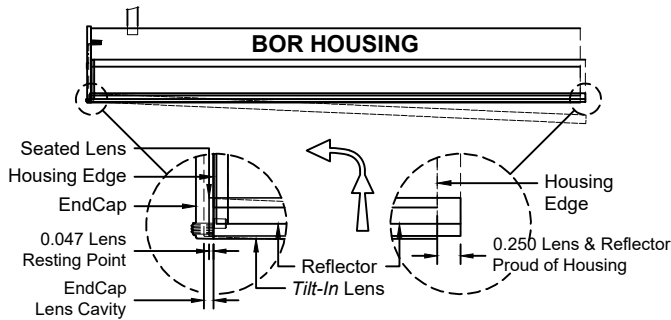


1.) Slide the Lens fully into the EndCap and snap Lens into Housing.

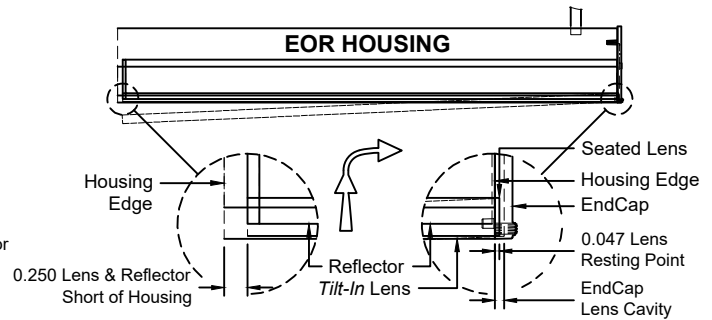


2.) Center Lens between EndCaps removing any visible gaps.

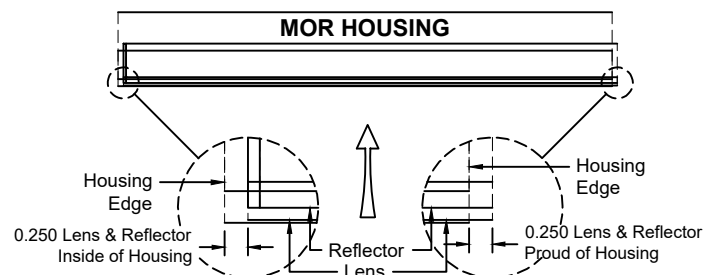
FOR CONTINUOUS RUN LUMINAIRES: Follow Lens Replacement Instruction Below...



BOR: Slide the Lens fully into the EndCap and snap Lens into Housing. *Lens End needs to be *equal with Reflector End* (See Image Above).



EOR: Slide the Lens fully into the EndCap and snap Lens into Housing. *Lens End needs to be *equal with Reflector End*.



MOR: Snap the Lens to the Housing. *Lens End needs to be *equal with Reflector End*.

CAR3-J/GB & J/GB-COVE

FIXTURE MUST BE INSTALLED BEFORE GYPSUM BOARD. "J" CHANNEL MUST BE INSTALLED FIRST IN PREPARATION OF FIXTURE INSTALLATION. THE PURPOSE OF THE "J" CHANNEL IS TO ALIGN THE FIXTURE ROW TO ARCHITECTURAL ELEMENTS.

"J" CHANNEL INSTALLATION

- "J" CHANNEL MAY BE SUPPLIED WITH THE FIXTURE OR IT MIGHT BE SUPPLIED SEPARATELY.
- THE "J" CHANNEL COMES IN 4' AND 8' LENGTHS. FOR LONG ROWS ONE OR MORE SECTIONS OF THE "J" CHANNEL MUST BE FIELD CUT TO SIZE BY INSTALLING CONTRACTOR TO FIT THE ROW LENGTH.
- THE "J" CHANNEL SITS **X"** ABOVE THE FINISHED CEILING PLANE AS SHOWN IN DIAGRAM #1
- INSTALL "J" CHANNEL AT APPROPRIATE HEIGHT PER ARCHITECTURAL LAYOUT. USE SUITABLE HARDWARE.
- "J" CHANNELS STRAIGHTNESS AND TRUENESS TO ARCHITECTURAL LAYOUT IS CONTRACTOR'S RESPONSIBILITY.
- "J" CHANNEL BRACKET IS PART OF THE FIXTURE. SUPPORT THE FIXTURE IN THE "J" CHANNEL AS SHOWN IN DIAGRAM #3. FIXTURE WEIGHT MUST BE SUPPORTED BY BUILDING STRUCTURAL MEMBER ATTACHED TO 1/4-20 BOLT.

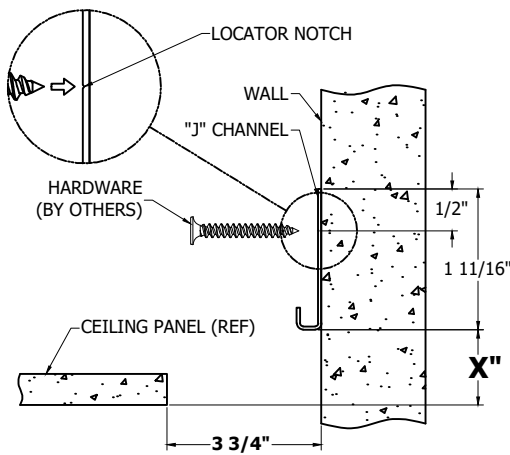


Diagram #1

FIXTURE:	X"
J/GB	2 5/16"
J/GB-COVE (1" REGRESS)	3 5/16"
J/GB-COVE (2.5" REGRESS)	4 13/16"
J/GB-COVE (4" REGRESS)	6 5/16"

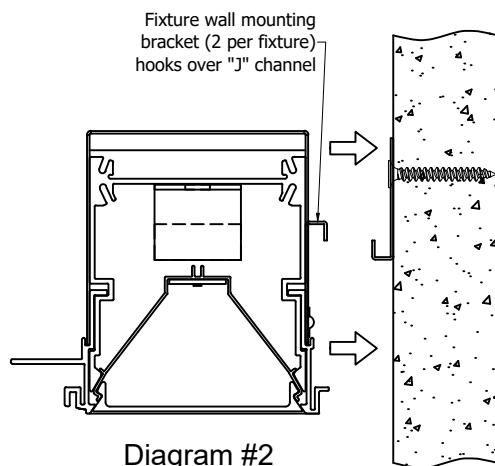


Diagram #2

CAR3-J/GB & J/GB-COVE FIXTURE INSTALLATION (J/GB SHOWN)

- BRING FIXTURE TO THE WALL WITH INSTALLED "J" CHANNEL AS SHOWN IN DIAGRAM #2.
- HANG FIXTURE TO THE WALL BY HOOKING FIXTURE WALL MOUNTING BRACKETS (2 PER FIXTURE) OVER "J" CHANNEL (DIAGRAM #3).
- ATTACH STRUCTURAL 1/4-20 ROD TO FIXTURE MOUNTING BRACKETS, 2 PER FIXTURE (RODS & HARDWARE BY OTHERS).
- SECURE FIXTURE FLANGE TO SUPPORT BLOCKING (BY OTHERS) USING APPROPRIATE HARDWARE (BY OTHERS).
- TIGHTEN UNTIL FLANGE IS SNUG AGAINST CEILING

ROW FIXTURE JOINING IS THE SAME AS SHOWN ON SHEET 3 EXCEPT CATCH/LATCHES ONLY ON CEILING SIDE.

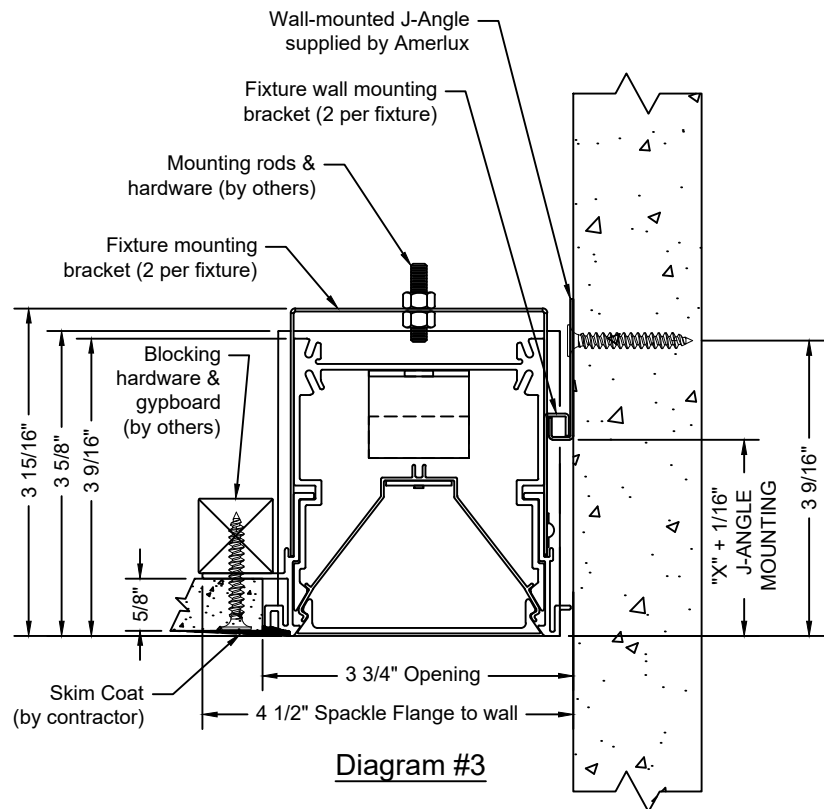


Diagram #3