

# Comfort Linear

Stem Mounted Linear Downlight, Remote Driver

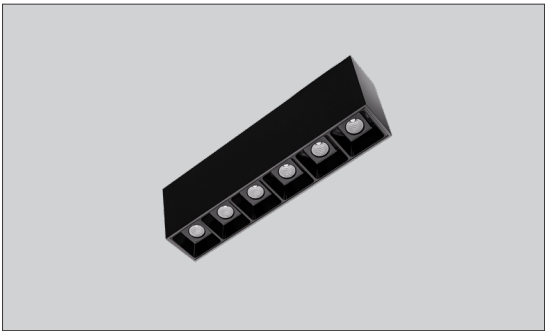


PROJECT:

TYPE:

## Features

1.5" wide comfort linear downlight provides exceptional visual comfort through the use of molded cellular louver and metallized optics. The slim and low profile fixture with remote driver provides a sophisticated and clean aesthetic.



## Product Overview

Type: Stem Mounted, Direct, Remote Driver  
Wattage: 15W  
Color Temp: 3000K  
CRI: 90+ typ.  
Dimming (wired): 0-10V, 1% dimming (standard)

## Certifications



## Fixture Summary

### Performance Data

Wattage	Lumen Output	LPW	CCT-CRI
15	1034	69	3000K-90+

# Comfort Linear

Stem Mounted Linear Downlight, Remote Driver



PROJECT:

TYPE:

## Ordering Information

EDR-2334-COMLIN-MD-WS . CL . RS24 . 15 . B . WF . 309 . BT . 120/277 . 6C . IND . 0-10V											
<b>1</b>		<b>2</b>		<b>3</b>		<b>4</b>		<b>5</b>		<b>6</b>	
<b>1</b> Model		<b>2</b> Optics		<b>3</b> Mounting		<b>4</b> Wattage		<b>5</b> Finish - Louver			
EDR-2334-COMLIN-MD-WS		CL cellular louver		RSxx rigid stem (xx = length of stem in inches)		15 15W		B black			
<b>6</b> Beam Spread		<b>7</b> Color Temp		<b>8</b> Finish		<b>9</b> Voltage		<b>10</b> Length			
WF wide flood, 50°		309 3000K-90+		HW high reflectance matte white BT black texture ST silver texture <i>For other RAL color, consult factory</i>		120/277		6C 6 cell, 8-3/8" in length			
<b>11</b> Configuration		<b>12</b> Drivers/Controls									
IND individual fixture		0-10V 1% analogue dimming, 120-277VAC, dim to off when selected with wireless dimming control									

Please contact factory for lead time and availability.

# Comfort Linear

## Stem Mounted Linear Downlight, Remote Driver



PROJECT:

TYPE:

### Specifications

#### Construction

One piece extruded aluminum housing is (1 1/2" wide X 1 7/8" high). Die-cast End Caps match fixture body finish. Internal components are die-formed, galvanized and pre-painted cold-rolled steel.

#### Optical

**CL** - precision molded metallized optics and molded cellular louvers.

#### LED

Amerlux's boards and patented connectors with industry recognized LEDs chips enables excellent thermal management and allows Amerlux to offer a 5 year warranty. Our LED binning is within 3 MacAdam ellipse.

**Color Temperature Options:** 3000K

**CRI:** 90+ typical

**R9:** >50 @ CRI 92

**Life:** 50,000+ hr., > 70% of initial lumens (L70)

#### Electrical

##### Remote Driver Wiring:

Driver is supplied installed in remote driver box, (*one driver per box*), with 5' of low voltage plenum rated cable. Fixture supplied with power cord ready to be connected to J-Box (*by others*) over cable canopy. Amerlux recommends a maximum of 25' between the fixture and the remote driver box. Consult factory with job specific electrical spec if more than 15' is required. Feeds are added as required by specified wattage and driver maximums.

**See page 4 for wiring installation.**

Standard Wattage: 15W

***This product complies with IEEE C62.41 for surge endurance up to 2.5KV.***

***Amerlux® recommends using additional surge protection with this unit (supplied by others), surge damage is not covered under warranty.***

***Emergency circuit via remote inverter or auxiliary emergency power supply (by others).***

#### Finish

All painted surfaces are premium powder coated baked on for maximum durability and color stability.

*For special paint colors, supply RAL and/or actual paint chip for factory consultation.*

#### Mounting

**RS** - Fixtures mounted with 1/2 NPS stem

#### Certifications

Approved to UL standards for damp locations as tested by CSA  
Intended for indoor use only

#### Warranty

Amerlux's 5 year limited warranty. Please consult Amerlux website for details.



# Comfort Linear

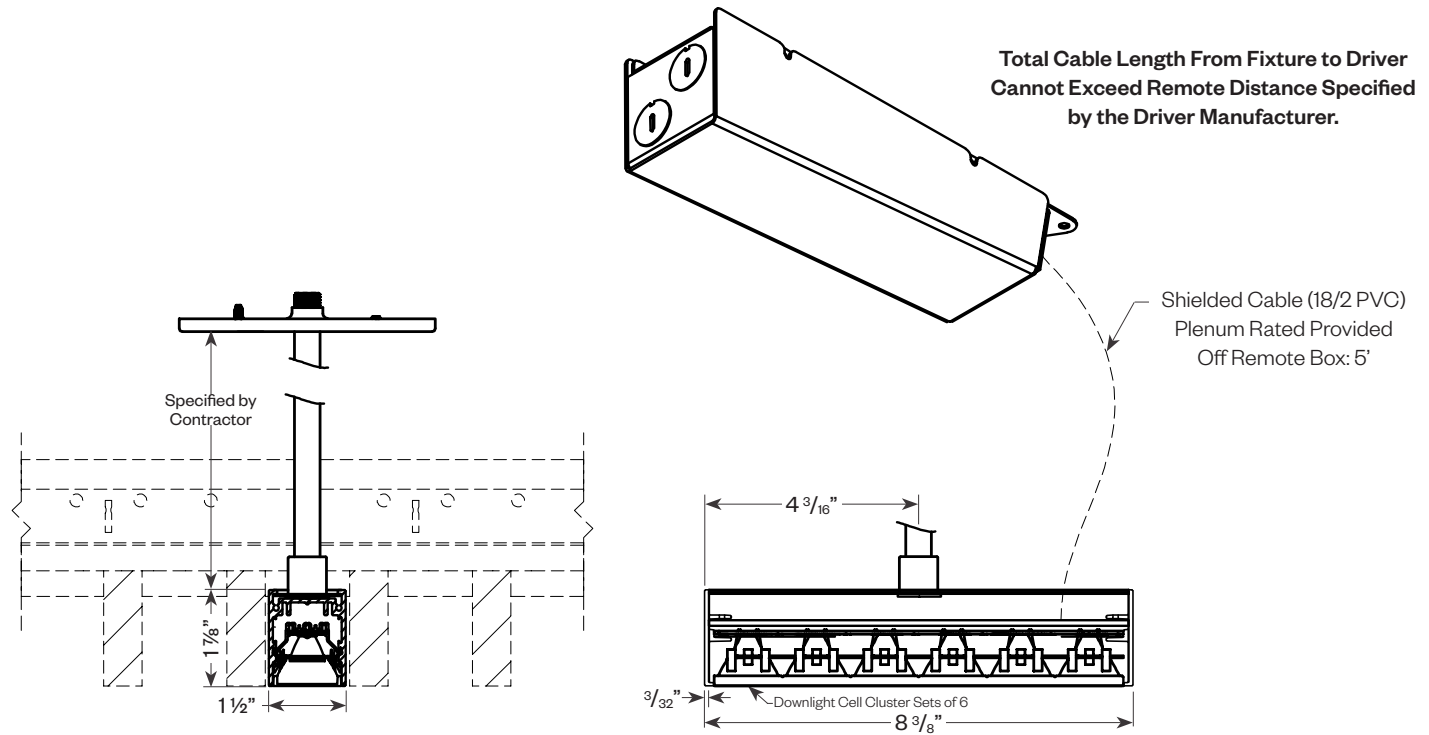
Stem Mounted Linear Downlight, Remote Driver



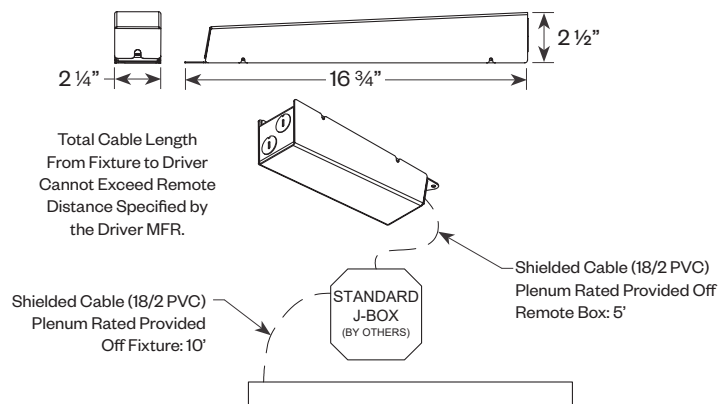
PROJECT:

TYPE:

## Product Details



## Remote Driver Details



# Comfort Linear

## Stem Mounted Linear Downlight, Remote Driver



PROJECT:

TYPE:

### Static White - Dimming Compatibility

Amerlux® Linea® fixtures are compatible with all major dimming protocols prevalent in the United States. Please see below for general compatibilities and wiring diagrams. Amerlux recommends testing your unique dimming configuration as the exact full configuration (*Dimmer, Fixture Quantity, Voltage, etc*) may affect dimming performance.

--- NOTE: INFORMATION BELOW IS FOR WIRED DIMMERS ONLY. FOR WIRELESS DIMMERS, CONSULT FACTORY ---

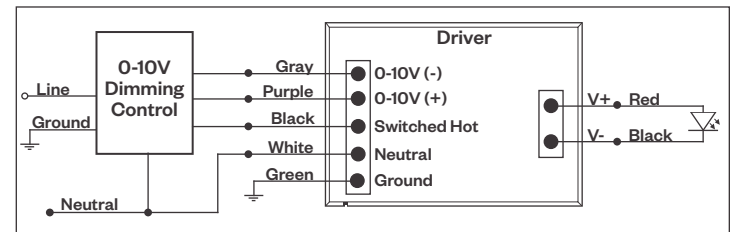
#### 0-10V - DIMMING (Standard)

Integrates into a variety of building management and daylighting controls

##### Notes:

- 120V or 277V\*
- Dims down to 1% light output
- Requires interface to turn off power to driver
- Consult Dimming manufacturer for installation instructions - **DO NOT SHARE NEUTRALS!**

#### 0-10V Wiring Diagram



#### Compatible Dimmers\*:

Wall Box			Central System
Lutron:	Wattstopper:	Leviton:	Lutron Grafikx Eye with GRX-TV1 Interface
Diva - DVSTV	ADF-120277	Renoir II	
Maestro - MS-Z101			
Nova-T - NTSTV-DV			

##### Notes:

\* Driver is 277VAC dimmable with appropriate dimmer (*by others*). All provided wiring diagrams show 120VAC wiring colors and method. Please refer to 277VAC dimmer installation instructions for 277VAC wiring diagrams.

\* The absence of a dimmer from the lists above does not imply incompatibility. Please consult factory for compatibility inquiries.