

Comfort Linear

Surface Mounted Linear Downlight

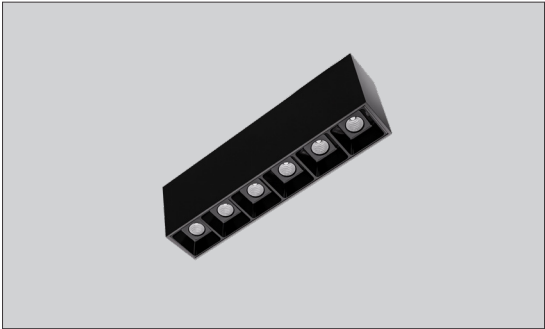


PROJECT:

TYPE:

Features

1.5" wide comfort linear downlight provides exceptional visual comfort through the use of molded cellular louver and metallized optics. The slim and low profile fixture with remote driver provides a sophisticated and clean aesthetic.



Product Overview

- Type: Surface Mounted, Direct
- Wattage: 15W
- Color Temp: 3000K
- CRI: 90+ typ.
- Dimming (wired): 0-10V, 1% dimming (standard)

Certifications



Fixture Summary

Performance Data

Wattage	Lumen Output	LPW	CCT-CRI
15	1034	69	3000K-90+

Comfort Linear

Surface Mounted Linear Downlight



PROJECT:

TYPE:

Ordering Information

EDR-2334-COMLIN-D-WS		CL	SM	15		WF	309		120/277	6C	IND	0-10V
1		2	3	4	5	6	7	8	9	10	11	12
1	Model	2	Optics	3	Mounting	4	Wattage	5	Finish - Louver			
	EDR-2334-COMLIN-D-WS		CL cellular louver		SM surface mount		15 15W		B black W white			
6	Beam Spread	7	Color Temp	8	Finish	9	Voltage	10	Length			
	WF wide flood, 50°		90± CRI 309 3000K-90+		HW high reflectance matte white BT black texture ST silver texture <i>For other RAL color, consult factory</i>		120/277		6C 6 cell, 8-3/8" in length			
11	Configuration	12	Drivers/Controls									
	IND individual fixture		0-10V 1% analogue dimming, 120-277VAC, dim to off when selected with wireless dimming control									

Please contact factory for lead time and availability.

Comfort Linear

Surface Mounted Linear Downlight



PROJECT:

TYPE:

Specifications

Construction

One piece extruded aluminum housing is (1 1/2" wide X 1 7/8" high). Die-cast End Caps match fixture body finish. Internal components are die-formed, galvanized and pre-painted cold-rolled steel.

Optical

CL - precision molded metallized optics and molded cellular louvers.

LED

Amerlux's boards and patented connectors with industry recognized LEDs chips enables excellent thermal management and allows Amerlux to offer a 5 year warranty. Our LED binning is within 3 MacAdam ellipse.

Color Temperature Options: 3000K

CRI: , 90+ typical

R9: >50 @ CRI 92

Life: 50,000+ hr., > 70% of initial lumens (L70)

Electrical

Standard Wattage: 15W

This product complies with IEEE C62.41 for surge endurance up to 2.5KV.

Amerlux® recommends using additional surge protection with this unit (supplied by others), surge damage is not covered under warranty.

Emergency circuit via remote inverter or auxiliary emergency power supply (by others).

Finish

All painted surfaces are premium powder coated baked on for maximum durability and color stability.

For special paint colors, supply RAL and/or actual paint chip for factory consultation.

Mounting

SM - Direct Surface Mounted - Housing needs to be attached to solid structure above. Mounting holes are pre-drilled at factory. Some fixture disassembly and reassembly required. Mounting hardware by others.

Certifications

Approved to UL standards for damp locations as tested by CSA

Intended for indoor use only

Warranty

Amerlux's 5 year limited warranty. Please consult Amerlux website for details.



Comfort Linear

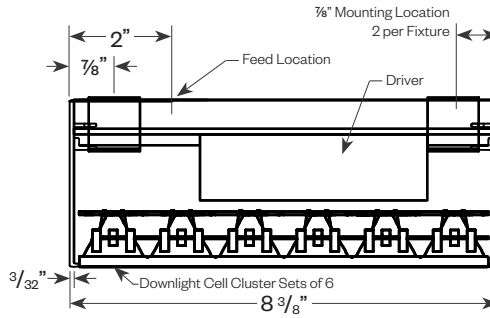
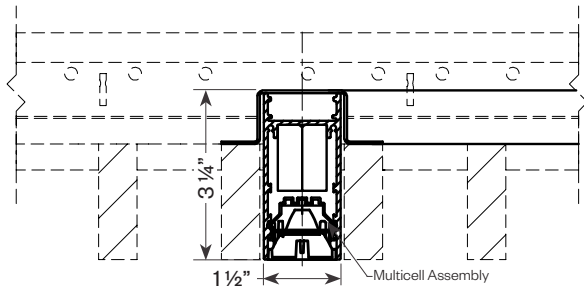
Surface Mounted Linear Downlight



PROJECT:

TYPE:

Product Details



Comfort Linear

Surface Mounted Linear Downlight



PROJECT:

TYPE:

Static White - Dimming Compatibility

Amerlux® Linea® fixtures are compatible with all major dimming protocols prevalent in the United States. Please see below for general compatibilities and wiring diagrams. Amerlux recommends testing your unique dimming configuration as the exact full configuration (*Dimmer, Fixture Quantity, Voltage, etc*) may affect dimming performance.

--- NOTE: INFORMATION BELOW IS FOR WIRED DIMMERS ONLY. FOR WIRELESS DIMMERS, CONSULT FACTORY ---

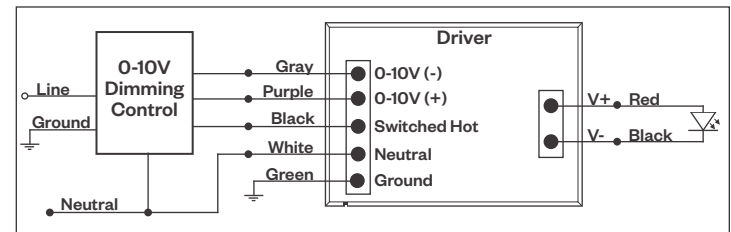
0-10V - DIMMING (Standard)

Integrates into a variety of building management and daylighting controls

Notes:

- 120V or 277V*
- Dims down to 1% light output
- Requires interface to turn off power to driver
- Consult Dimming manufacturer for installation instructions - **DO NOT SHARE NEUTRALS!**

0-10V Wiring Diagram



Compatible Dimmers*:

Wall Box			Central System
Lutron:	Wattstopper:	Leviton:	Lutron Grafikx Eye with GRX-TV1 Interface
Diva - DVSTV	ADF-120277	Renoir II	
Maestro - MS-Z101			
Nova-T - NTSTV-DV			

Notes:

* Driver is 277VAC dimmable with appropriate dimmer (*by others*). All provided wiring diagrams show 120VAC wiring colors and method. Please refer to 277VAC dimmer installation instructions for 277VAC wiring diagrams.

* The absence of a dimmer from the lists above does not imply incompatibility. Please consult factory for compatibility inquiries.