

# INSTRUCTION SHEET



## RK350 ROUND/SQUARE REMOTE RIGID STEM MOUNT (2" DEEP CANOPY)

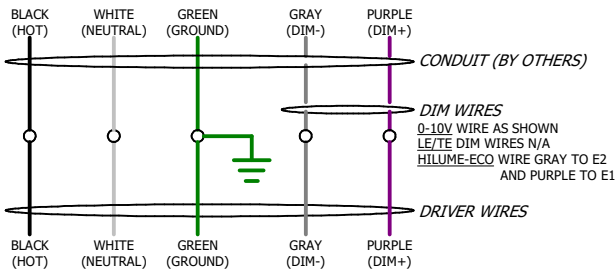
689-0772

PAGE 1 OF 1

**WARNING - RISK OF FIRE AND ELECTRICAL SHOCK. FIXTURE MUST BE INSTALLED BY A QUALIFIED ELECTRICIAN ONLY. FIXTURE IS INTENDED FOR INSTALLATION IN ACCORDANCE WITH THE NATIONAL ELECTRICAL CODE, LOCAL AND FEDERAL SPECIFICATIONS. DISCONNECT POWER AT ELECTRICAL PANEL BEFORE SERVICING.**

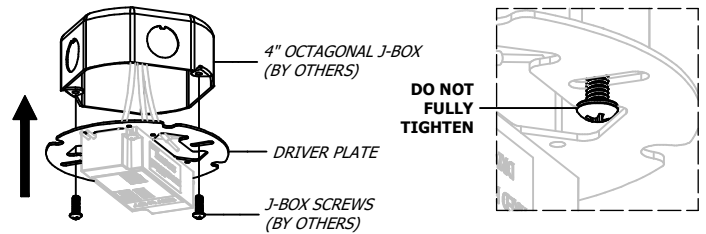
**RETAIN THESE INSTRUCTIONS FOR MAINTENANCE REFERENCE.**

### 1 WIRE DRIVER



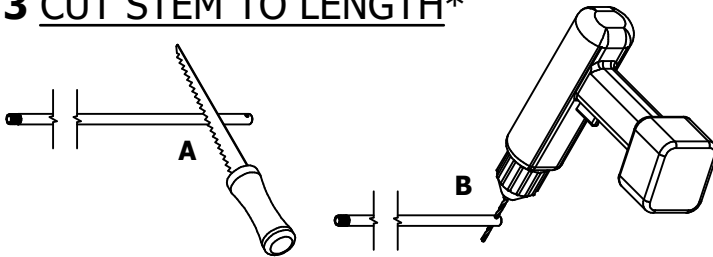
WIRE ACCORDING TO LOCAL AND NATIONAL CODE

### 2 MOUNT DRIVER PLATE



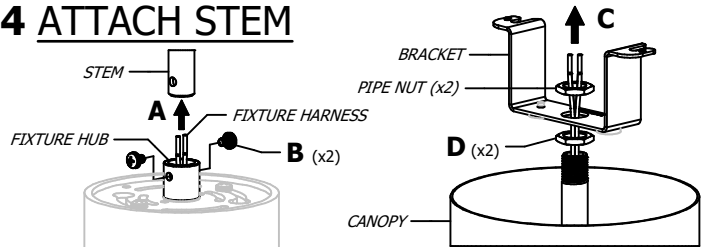
MOUNT DRIVER PLATE TO J-BOX WITH SCREWS (BY OTHERS). DO NOT FULLY TIGHTEN SCREWS

### 3 CUT STEM TO LENGTH\*



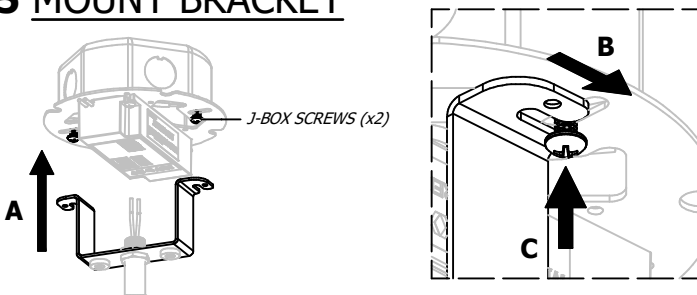
IF NECESSARY, **A** CUT HOLED END TO DESIRED LENGTH, THEN **B** DRILL A  $\varnothing 3/16"$  THRU HOLE  $5/16"$  FROM END

### 4 ATTACH STEM



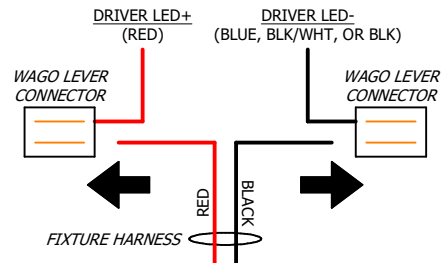
**A** FEED FIXTURE HARNESS THROUGH STEM, **B** ALIGN STEM AND FIXTURE HUB HOLES AND TIGHTEN SCREWS (x2), **C** FEED FIXTURE HARNESS THROUGH CANOPY, NUT, THEN BRACKET, THEN **D** SECURE STEM TO BRACKET WITH PIPE NUTS (x2)

### 5 MOUNT BRACKET



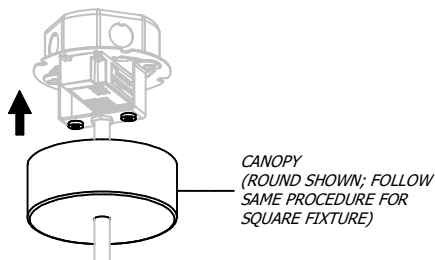
ATTACH BRACKET TO J-BOX SCREWS, THEN TIGHTEN SCREWS

### 6 WIRE LED



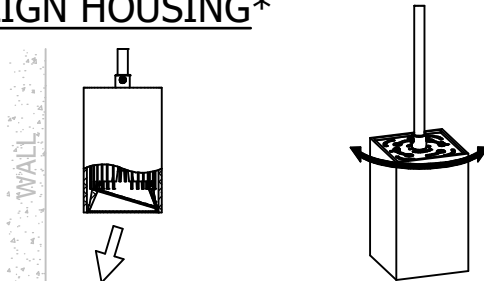
WIRE DRIVER LED +/- WIRES TO HARNESS WITH WAGOS

### 7 ATTACH CANOPY



RAISE CANOPY AND ATTACH TO MAGNETIC BRACKET

### 8 ALIGN HOUSING\*



IF FIXTURE HAS A WALL WASH TRIM AND/OR SQUARE HOUSING, ALIGN HOUSING BY HOLDING STEM THEN ROTATING HOUSING

Amerlux, 178 Bauer Drive, Oakland, N.J. 07436, T: 973-882-5010, F: 973-882-2604 [www.amerlux.com](http://www.amerlux.com)