

Acion

Large LED Accent

ACCL / BLK



Features

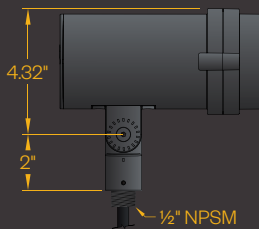
The Amerlux Acion accent luminaire employs solid state technology and precision engineering to provide small scale LED solutions in landscape and architecture layouts. All components are encapsulated inside a single attractive enclosure designed for superior performance in weather resistant applications. Offered in a choice of beam spreads, finishes, and color temperatures, two mounting options and glare shield are also available.

Product Overview

Wattage:	17W
Lumen Output:	1,360 lm
Color Temp:	2,700K / 3,000K / 3,500K
Dimming:	ELV trailing edge dimming only

PROJECT:

TYPE:



Construction:

- Die-cast aluminum
- IP67 sealed optical chamber and integral driver chamber
- Easy "two-screw" integral driver access, does not disturb optical chamber seal
- Flush lens prevents puddles/water deposits in upward facing applications
- 180° Knuckle mount
- Vertical aiming lock, with tamper-resistant tooled locking after final aiming

Optics:

- Lumen maintenance: 70% @ 50,000 hours
- 10°, 15°, 30°, 40°, 60°, 60x10, 60x30, 90x60 beam spreads are available with secondary shaping lens

Electrical:

- Integral driver
- Input voltage 120v-277v auto-sensing
- 1/2" NPSM wire entry
- Drive current 700mA
- Power consumption 17W
- ELV trailing edge dimming only

ETL listed, suitable for wet locations.

Mounting Accessories:

- Order Separately
- Ground Stake (**GSP17**)
 - Junction Box (**JBOX**)
 - Junction Mount (**JCOV**)

Optical Accessories:

- Hexell Louver (**HCL**)
- Half Glare Shield (**HGL**)

Finish:

Premium quality thermoset polyester powdercoat for a durable finish.

PROJECT:

TYPE:

Ordering Information

ACCL / _____ / _____ / _____ / _____
1 2 3 4 5

1 Model
ACCL

2 Color Temp
27 - 2,700K
30 - 3,000K
35 - 3,500K

3 Beam Spread
10 - 10°
15 - 15°
30 - 30°
40 - 40°
60 - 60°
H6010 - 60x10
H6030 - 60x30
H9060 - 90x60
V6010 - 60x10
V6030 - 60x30
V9060 - 90x60

4 Finish
BLK - Satin Black
CLB - Classic Bronze
GRN - Green
WHT - White
CSTM - Custom

5 Optical Accessories
HCL - Hexell Louver
HGL - Half Glare Shield

Mounting Accessories Ordering Information

_____ / _____
1 2

1 Mounting Accessories
GSP17 - Ground Stake (black polycarbonate)
JBOX - Junction Box (specify finish)
JCOV - Junction Mount (specify finish)

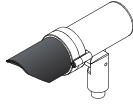
2 Finish
BLK - Satin Black
CLB - Classic Bronze
GRN - Green
WHT - White
CSTM - Custom

PROJECT:

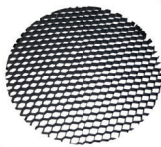
TYPE:

Optical Accessories:

HGL
(Glare Shield)



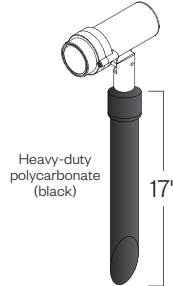
HCL
(Hexell Louver)



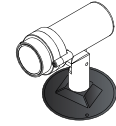
Mounting Accessories:

Order Separately

GSP17
(Ground Stake)



JCOV
(Junction Mount)



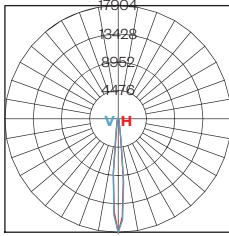
JBOX
(Junction Box)



Finish will match luminaire color.

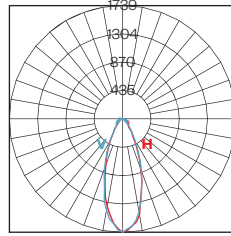
Optical Performance:

Polar Graph
ACCL-27-10



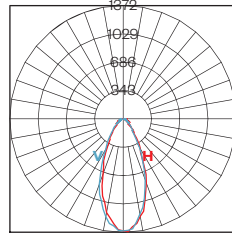
Maximum Candela = 17904
Located At Horizontal Angle = 0
Vertical Angle = 0
H - Horizontal Axial Candela
V - Vertical Axial Candela

Polar Graph
ACCL-27-30



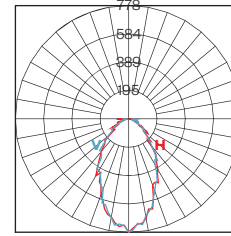
Maximum Candela = 1739
Located At Horizontal Angle = 0
Vertical Angle = 0
H - Horizontal Axial Candela
V - Vertical Axial Candela

Polar Graph
ACCL-27-40



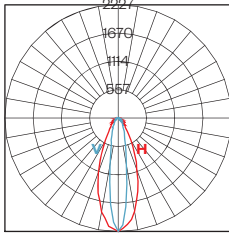
Maximum Candela = 1372
Located At Horizontal Angle = 2.5
Vertical Angle = -2.5
H - Horizontal Axial Candela
V - Vertical Axial Candela

Polar Graph
ACCL-27-60



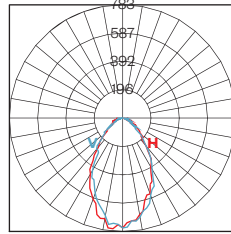
Maximum Candela = 778
Located At Horizontal Angle = 0
Vertical Angle = 0
H - Horizontal Axial Candela
V - Vertical Axial Candela

Polar Graph
ACCL-27-60X10



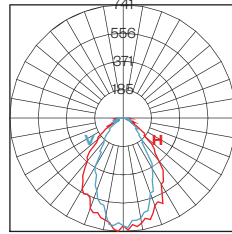
Maximum Candela = 2227
Located At Horizontal Angle = 0
Vertical Angle = 0
H - Horizontal Axial Candela
V - Vertical Axial Candela

Polar Graph
ACCL-27-60X30



Maximum Candela = 783
Located At Horizontal Angle = -5
Vertical Angle = 2.5
H - Horizontal Axial Candela
V - Vertical Axial Candela

Polar Graph
ACCL-27-60X90



Maximum Candela = 741
Located At Horizontal Angle = -2.5
Vertical Angle = 0
H - Horizontal Axial Candela
V - Vertical Axial Candela

Data represents the use of light shaping filters
Complete photometric data (ies format) available upon request

Performance Chart

	Beam Spread	Approx. Lumens	Total Efficacy
Symmetric Pattern	10 (10°)	1240-1360	72-80 lm/W
	15 (15°)	1190-1305	70-76 lm/W
	30 (30°)	1140-1250	67-73 lm/W
	40 (40°)	1130-1250	66-73 lm/W
	60 (60°)	1110-1190	65-70 lm/W
Horizontal Pattern	H6010 (60x10)	980-1180	57-69 lm/W
	H6030 (60x30)	1070-1190	62-70 lm/W
	H9060 (90x60)	1050-1170	61-68 lm/W
Vertical Pattern	V6010 (60x10)	1180-980	69-57 lm/W
	V6030 (60x30)	1190-1070	70-62 lm/W
	V9060 (90x60)	1170-1050	68-61 lm/W