

# AO28 SERIES UTILITY LUMINAIRE

U.10.17.18

AO28  
HID UTILITY

## DESCRIPTION:

The DU730AO Series is a high performance utility luminaire designed around an efficient Type III (T3) or Type V (T5) refractive lens. The spun aluminum hood minimizes light in the upper hemisphere.

## INSTALLATION:

The luminaire will mount to a 3" OD post or tenon with 5/16" black oxide coated stainless steel set screws to ensure a solid connection. The diffuser will be held to the fitter by (4) 5/16" black oxide coated stainless steel captive set screws.

## ELECTRICAL:

- High power factor ballast (HPF), core and coil type, pre-wired and tested
- Easy ballast pod access
- 4KV pulse rated porcelain socket
- Suitable for wet location

ETL listed, suitable for wet locations.

## DIFFUSER CHOICES:

- Acrylic Type III (**AC-T3**)
- Acrylic Type V (**AC-T5**)
- Polycarbonate Type III (**PC-T3**)
- Polycarbonate Type V (**PC-T5**)

## ACCESSORIES:

- Cast finial (**CFIN**)
- 90 degree house-side shield (**HSS-90**)
- 180 degree house-side shield (**HSS-180**)
- Twist-lock photocell (**PCL-TW**)
- Faceted Downlight Reflector (**FDR**)

## FINISH:

Durable thermoset polyester powdercoat finish in the following:

- Satin Black (**BLK**)
- Classic Bronze (**CLB**)
- Gloss Textured Bronze (**GBZ**)
- Green (**GRN**)
- Gloss Textured Black (**GTB**)
- Textured Black (**TBK**)
- Gloss Textured Green (**TGR**)



Standard

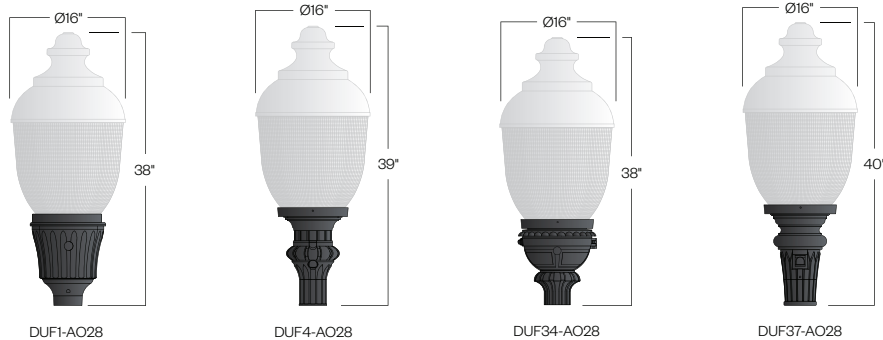


With SLL-FDR (T5 only)



PROJECT:

TYPE:



## Ordering Information:

Model	Lens Material	Light Distribution	Light Source	Voltage	Finish	Accessories
DUF1-AO28 DUF4-AO28 DUF34-AO28 DUF37-AO28	AC PC	T3 T5	70MH 100MH 150MH 70HPS 100HPS 150HPS	120v 208v 240v 277v	BLK CLB GBZ GRN GTB TBK TGR Custom	CFIN HSS-90 HSS-180 PCL-TW FDR

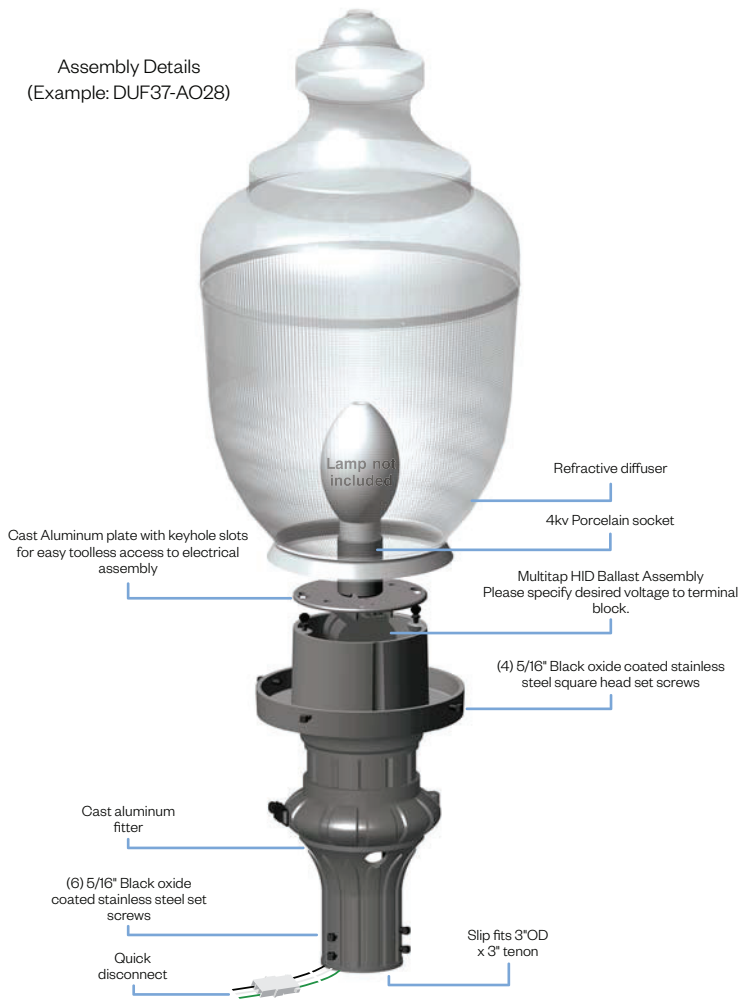
See next page for more complete ordering options



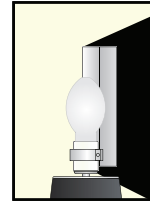
Part String

Example: DUF1-AO28/PC-T5/100MH/120v/BLK

Assembly Details  
(Example: DUF37-AO28)



Options



**HSS90 & HSS180**  
House Side Shield  
for use with Optical  
Systems

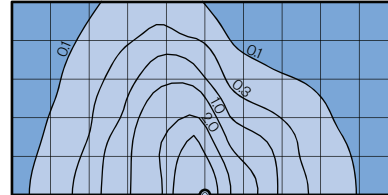


**FDR**  
Faceted  
Downlight  
Reflector

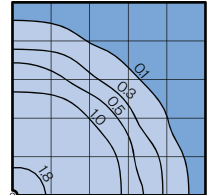
Photometry

AO28 Assembly  
175MH lamp  
14,000 Lumen  
12' Mounting Height  
Grid Spacing is 12'

Type III (T3)



Type V (T5)



Socket Types

Wattage	Socket Type
<b>70MH,100MH,150MH</b>	Medium
<b>70HPS,100HPS</b>	Medium
<b>150HPS</b>	Mogul