

AO28 SERIES LUMINAIRE

U.11.15.18

AO28
HID

DESCRIPTION:

Lighting for exterior retail, commercial and hospitality environments. The AO28 Series consists of an efficient Type III (T3) or Type V (T5) refractive acorn combined with one of several styles of cast aluminum fitters.

INSTALLATION:

The luminaire will mount to a 3" OD post or tenon with 5/16" black oxide coated stainless steel set screws to ensure a solid connection. The diffuser will be held to the fitter by (4) 5/16"-18 black oxide coated stainless steel set screws.

ELECTRICAL:

- High power factor ballast (HPF), core and coil type, pre-wired and tested
- Easy ballast pod access
- 4KV pulse rated porcelain socket
- Suitable for wet location

ETL listed, suitable for wet locations.

DIFFUSER CHOICES:

- Acrylic Type III (**AC-T3**)
- Acrylic Type V (**AC-T5**)
- Polycarbonate Type III (**PC-T3**)
- Polycarbonate Type V (**PC-T5**)

FINISH:

Durable thermoset polyester powdercoat finish in the following:

- Satin Black (**BLK**)
- Classic Bronze (**CLB**)
- Gloss Textured Bronze (**GBZ**)
- Green (**GRN**)
- Gloss Textured Black (**GTB**)
- Textured Black (**TBK**)
- Gloss Textured Green (**TGR**)

ACCESSORIES:

- Cast aluminum Finial (**CFIN**)
- Faceted Downlight Reflector (**FDR**)
- 90 Degree house-side shield (**HSS-90**)
- 180 Degree house-side shield (**HSS-180**)
- Dusk-to-dawn Photocell (**PCL**)

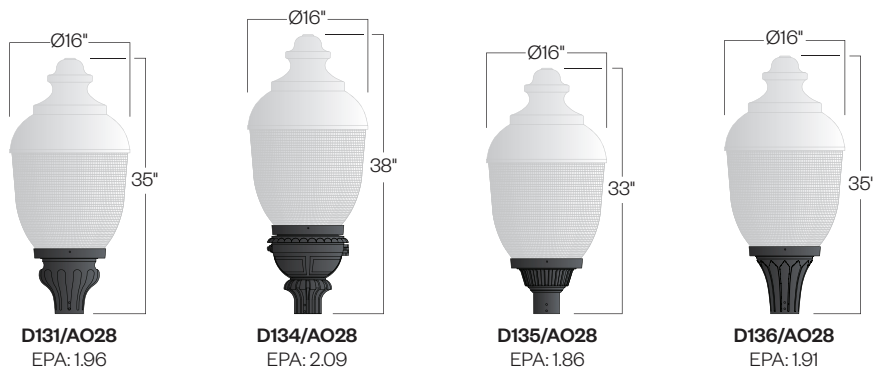


PROJECT:

LOCATION:

FIXTURE TYPE:

NOTES:



Ordering Information



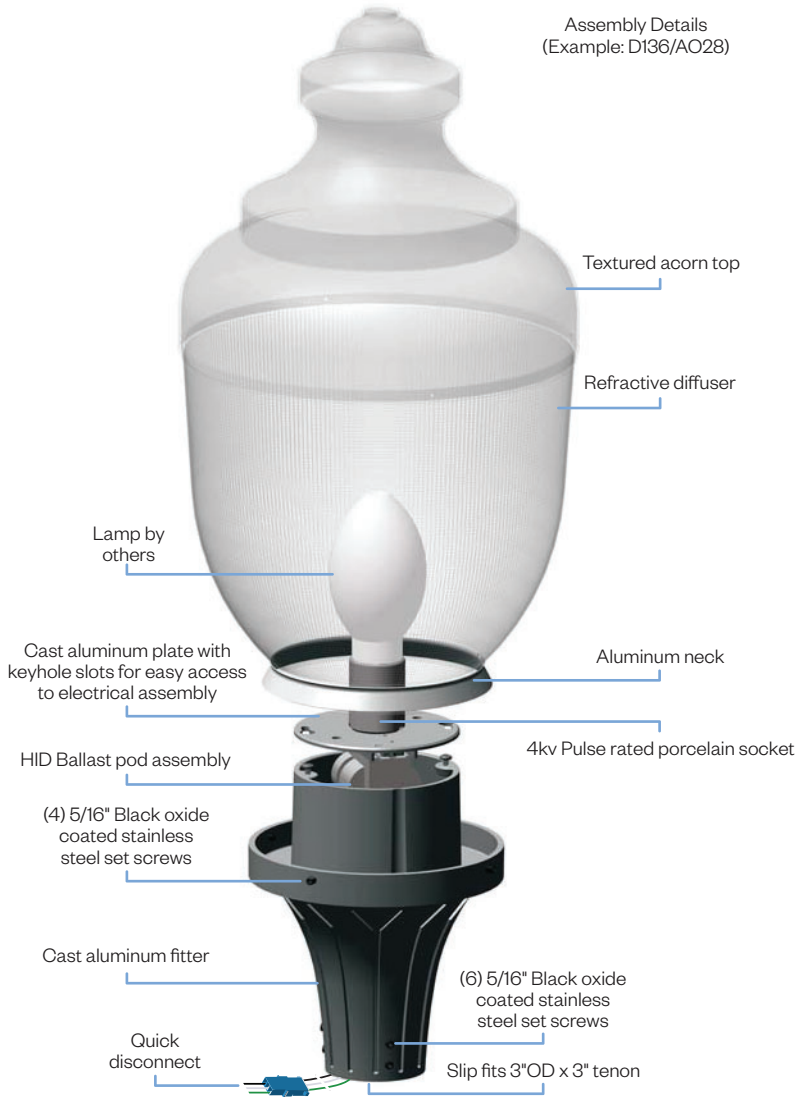
Add additional accessories as needed.

- | | |
|---|---|
| <p>1 <u>Model</u>
 D131/AO28
 D134/AO28
 D135/AO28
 D136/AO28</p> <p>2 <u>Diffuser Choices</u>
 AC-T3- Acrylic Type 3
 AC-T5- Acrylic Type 5
 PC-T3- Polycarbonate Type 3
 PC-T5- Polycarbonate Type 5</p> <p>3 <u>Light Source</u>
 70MH - 70w Metal Halide
 100MH - 100w Metal Halide
 150MH - 150w Metal Halide
 70HPS - 70w High Pressure Sodium
 100HPS - 100w High Pressure Sodium
 150HPS - 150w High Pressure Sodium
 MDO - Medium Socket Only
 MGO - Mogul Socket Only</p> <p>4 <u>Voltage</u>
 120V
 208V
 240V
 277V</p> | <p>5 <u>Finish</u>
 BLK - Satin Black
 CLB - Classic Bronze
 GBZ - Gloss Textured Bronze
 GRN - Green
 GTB - Gloss Textured Black
 TBK - Textured Black
 TGR - Gloss Textured Green
 CSTM - Custom</p> <p>6 <u>Accessories</u>
 CFIN - Cast Aluminum Finial
 HSS-90 - 90° House Side Shield
 HSS-180 - 180° House Side Shield
 PCL - Dusk-to-dawn button type photocell</p> |
|---|---|

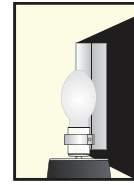
AO28 SERIES LUMINAIRE

AO28
HID

Assembly Details
(Example: D136/AO28)



Options



HSS90 & HSS180
House Side Shield
for use with
Optical Systems

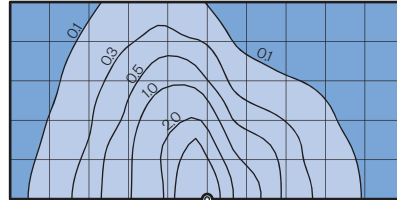


FDR
Faceted
Downlight
Reflector

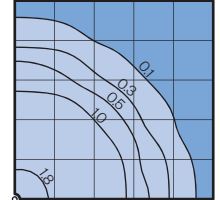
Photometry

Typical HID light source
14,000 Lumen
12' Mounting Height
Grid Spacing is 12'

Type III (T3)



Type V (T5)



Socket Types

Wattage	Socket Type
70MH,100MH,150MH	Medium
70HPS,100HPS	Medium
150HPS	Mogul